



Datasheet

ENGLISH

RS PRO Welding Mask

RS Stock Number: 171-6848



Product Description

Auto-darkening welding helmet, which switches from a light to dark state when welding activity starts. Light state is DIN 4. Dark state is adjustable from DIN 9 to DIN 13 using the external knob. Response time from light to dark state is 0.04 milliseconds. Return from dark to clear state in 0.03 – 0.04 seconds. Power is supplied by solar cells with 2 built-in lithium batteries to offer back-up for longer service life.



ENGLISH

Datasheet

Features & Benefits

- CE certified
- Wheel ratchet size adjustment for easy fitting
- Solar cell power and two built-in lithium back-up batteries
- Working time over 5000 hours
- Auto-darkening. Switches from light to dark when the welding process starts
- Suitable for a wide range of applications
- Suitable to be worn with disposable respirators

Dimensions

65 mm (Length) x 45 mm (Width) x 39 mm (Height)

Weight: 0.8800 Kg

Standards

EN 166 (1 S)

EN 175 (F)

EN 379 (4 / 9-13; 1/1/1/2)

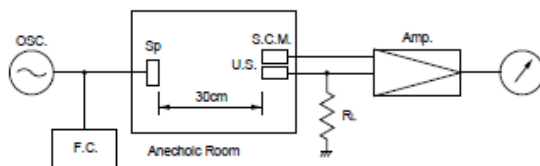
CE

Datasheet

Data/Notice

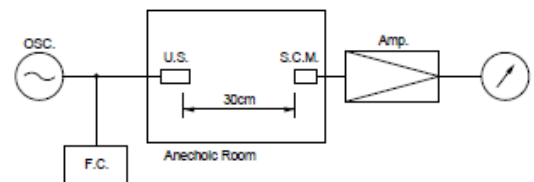
■ Test Circuit

Receiver



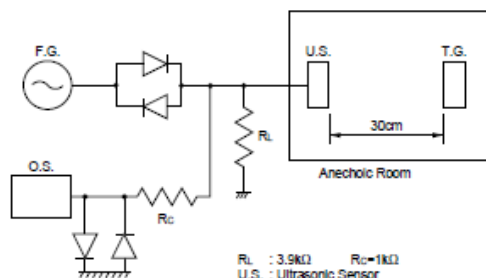
R_L : 3.9kΩ
 U.S. : Ultrasonic Sensor
 S.C.M. : Standard Capacitor Microphone (Brüel&Kjær 4135)
 Amp. : Amplifier (Brüel&Kjær 2610)
 OSC. : Oscillator
 Sp. : Tweeter
 F.C. : Frequency Counter

Transmitter



U.S. : Ultrasonic Sensor (Brüel&Kjær 4135)
 S.C.M. : Standard Capacitor Microphone (Brüel&Kjær 2610)
 Amp. : Amplifier
 Input Voltage : 10 Vrms
 F.C. : Frequency Counter

Dual Use



R_L : 3.9kΩ R_C = 1kΩ
 U.S. : Ultrasonic Sensor
 T.G. : Target
 F.G. : Function Generator
 O.S. : Oscilloscope

■ Notice (Soldering and Mounting)

1. Pay attention to the mounting position as these sensors have directivity.
2. Please avoid applying DC-bias by connecting DC blocking capacitor or some other way because, otherwise, the component may be damaged.
3. Do not use in water.