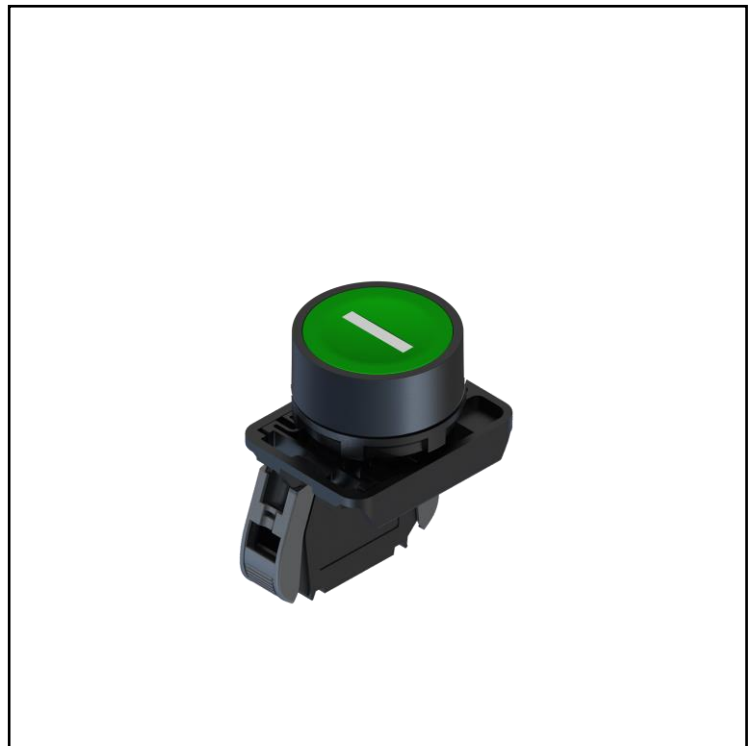


FEATURES

- Flush pushbutton
- Thermoplastic body

RS PRO Flush Push Button Complete Units

RS Stock No.: 2398202



RS Professionally Approved Products bring to you professional quality parts across all product categories. Our product range has been tested by engineers and provides a comparable quality to the leading brands without paying a premium price.

Push Button Complete Units

Product Description

Thanks to the installation by means of a fixing ring, the operators in thermoplastic material guarantee high speed and ease of assembly, while maintaining excellent mechanical resistance.

General Specifications

Casing Material	Thermoplastic
Operator	Flush pushbutton with ON symbol
Color	green
Outer diameter	30
Microswitch	1NO
Connecting Terminals	Screw with captive cable clamp
Connecting Cables Dimensions [mm ²]	1 or 2 conductors - 0.5 ... 2.5

Mechanical Specifications

Operating Temperatures [°C]	-25 / +70
Stock Temperatures [°C]	-40 / +80
Mechanical durability (Millions of operations)	1
B10d (million of operations)	2
Max. switching frequency [Cicli/h]	3600

Electrical Specifications

Protection against electrical shocks	Class II - Double insulation
Rated Insulating Voltage U_i [V]	690
Pollution Degree	3
Contact rating secondo UL508	A 600 Q 300
Rated impulsive voltage [kV]	8
Conventional thermal current in air free $I_{th}(\theta \text{ min } 40^\circ \text{ C})$ [A] (θ)	10
Short circuit protection (EU min 500Vac - fuses type gG (gl)) [A]	10
Rated Operational Current I_e - AC-15 (50-60 Hz) [Vac - A]	24V - 10A / 240V - 6A / 400V - 4A
Rated Operational Current DC-13 [Vdc - A]	24V - 2,8A / 125V - 0.55A / 250V - 0.27A
Resistance Between Contacts [m Ω]	25

Push Button Complete Units



Protection Category

IP Degree of Protection	65 (front panel) 20 (rear panel)
-------------------------	----------------------------------

Additional Information

EAN	8000126233360
Custom Tariff Number	85371098

Approvals

Declarations	CE – UKCA
Standards Met	EN 60947-5-1 and UL 508