

Datasheet

RS PRO IP68 USB-A 3.0 – Metal Male Mountable Cable End



The RS PRO series of waterproof metal USB-A connectors are a range of ruggedised IP67/IP68 connectors designed to be used outdoors or in harsher industrial environments. Designed to fit panel cut outs of 25.5mm the metal USB-A series also comes with rear potting on the panel mount connectors. This ensures your panel is still sealed to an IP67/IP68 rating even when the connector is unmated, and the sealing cap is not connected. The threaded mating allows for a secure connection.

Features & Benefits:

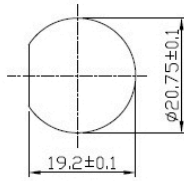
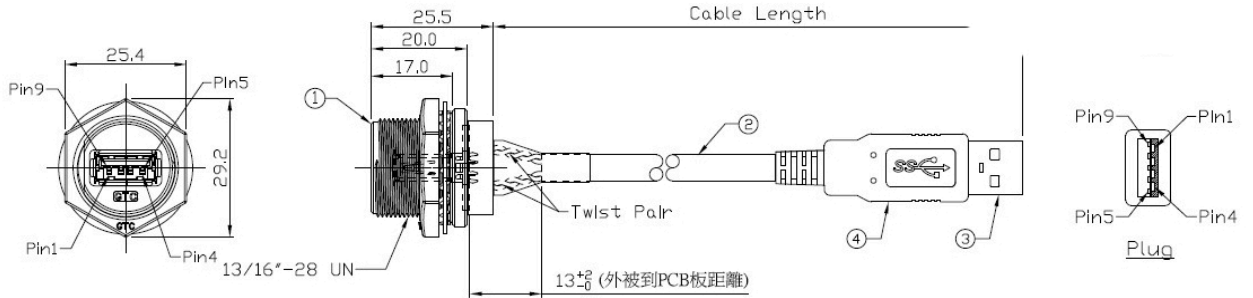
- Thermoplastic or Nickel Plated Zinc Alloy Housing
- IP67/IP68
- Rear Potted
- Threaded Mating
- USB-A 2.0/3.0

Quality Standards



Dimensional line drawings

122-3034



Recommend Panel Cut-Out

1	Red	1
2	White	2
3	Green	3
4	Black	4
5	Blue	5
6	Yellow	6
7	Drain	7
8	Purple	8
9	Orange	9
Shell	Braid	Shell

Conn. Plug

Wiring Diagram