

FEATURES

- Excellent electrical connection
- Reduces short circuits
- DIN Colour coded collar for easy ferrule size identification
- Nylon insulated collar for reduced leakage, creepage and gas intrusion
- Tin plated copper tube for excellent conductivity
- Crimped terminal can be repeatedly inserted and removed without degrading end of the wire

RS PRO Insulated Crimp Bootlace Ferrule, 8mm Pin Length, 1.7mm Pin Diameter, 1mm² Wire Size, Red

RS Stock No.: 513-2607



RS Professionally Approved Products bring to you professional quality parts across all product categories. Our product range has been tested by engineers and provides a comparable quality to the leading brands without paying a premium price.

Product Description

From RS PRO a range of high-quality French colour coded bootlace ferrules (also known as cord end terminals) for providing a clean end termination to multi-stranded wires. These reliable wire ferrules ensure that you have a positive connection when connecting wires to terminal blocks and captive terminals

Suitable Crimping Tools

For ferrules with a wire size range of 0.25 to 6 mm² use crimping tool frame stock number [848-391](#) with crimping die [848-420](#)

For ferrules with a wire size range of 10 to 25 mm² use crimping tool stock number [297-2935](#)

General Specifications

| | |
|----------------------------|-------------------------------------------------------------------------------------------------------------------------------------------------------------------------------------------------------------------------------------------------------------------------------------------|
| Number of Entries | 1 |
| Insulation | Insulated |
| Insulation Material | Nylon |
| Colour | Red |
| Contact Material | Copper |
| Contact Plating | Tin |
| Terminal Material | Copper tube |
| Surface Treatment | Tin plate |
| Insulation colour | Red |
| Ferrule Type | French |
| Pack Quantity | 10 |
| Application | Bootlace ferrules are used on multi-stranded wires that are being inserted into screw terminals and terminal blocks. Applications include consumer units, circuit breakers, electrical control panels and any equipment where there is a requirement for a multi-stranded wire connection |

Electrical Specifications

| | |
|-----------------------|------|
| Current Rating | 9A |
| Voltage Rating | 300V |

Mechanical Specifications

| | |
|--------------------------------------|----------|
| Maximum Wire Size (mm ²) | 1 |
| Maximum Wire Size (AWG) | 18 |
| Pin Diameter | 1.7mm |
| Pin Length | 8mm |
| Overall Length | 14mm |
| Weight | 0.0520kg |

Operation Environment Specifications

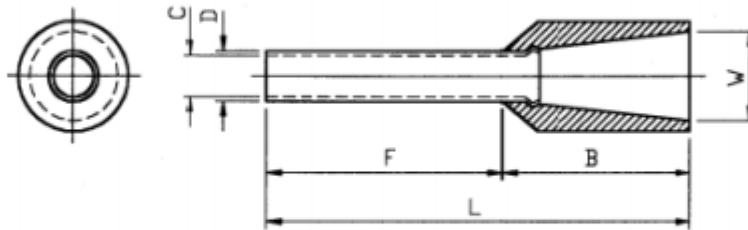
| | |
|---------------------|-------|
| Maximum Temperature | 105°C |
|---------------------|-------|

Approvals

| | |
|---------------------------|---------------|
| Compliance/Certifications | CE / UR / cUR |
|---------------------------|---------------|



Drawing (mm):



| Stock Number | F ± 0.50 | L ± 1.00 | W ± 0.30 | B ± 0.50 | D ± 0.10 | C ± 0.10 | Colour |
|--------------|--------------|--------------|--------------|--------------|--------------|--------------|--------|
| 513-2607 | 8 | 14.3 | 3 | 6.3 | 1.7 | 1.4 | RED |