

LED transformer

ET-E 10 W LED 220-240V

The new LED transformer 12W 12V operates with 12Vdc LED loads from 6W to 12W, with high performance inside. The mains voltage range of 110 to 240V. The output voltage is a stable and safe 12Vdc, and it has long lifetime (30,000 hours). It's compact size and light weight allows to use it in several different types of installation.

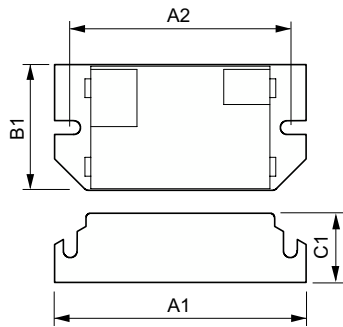
Product data

Operating and Electrical	
Input Voltage	220 to 240 V
Line Frequency	50 to 60 Hz
Input Frequency	50 to 60 Hz
Inrush Current Width	0.25 ms
Inrush Current Peak (Max)	5 A
Wiring	
Connector Type Input Terminals	push
Color Input Terminals	Orange
Color Output Terminals	White
Connector Type Output Terminals	Screw
Cable Length From Device to Lamp	0.5 m
Temperature	
Ambient temperature range	0 °C to 50 °C

T-Case Maximum (Max)	65 °C
Product Data	
Full product code	871869641775100
Order product name	ET-E 10 W LED 220-240V
Order code	913712911566
Numerator - Quantity Per Pack	1
Numerator - Packs per outer box	20
Material Nr. (12NC)	913712911566
Full product name	ET-E 10 W LED 220-240V
EAN/UPC - Case	8718696417768
EAN/UPC - Product/Case	8718696417751

LED transformer

Dimensional drawing



Product	A1	A2	B1	C1	D1
ET-E 10 W LED 220-240V	80 mm	70 mm	40 mm	22 mm	4.4 mm

