



# EPT20-15ET2

## Electric Pallet Truck 1.5t

- Perfect Upgrade of Reliability and Easy-maintenance

## ▣ FEATURE

---

### ■ Patented Design:

Ergonomic tiller bounded with key switch, BDI and trouble-shooting indicator enhances easy and accurate operation.



### ■ External Control System:

Patent designed external control system not only protects controller in place but also provides easy access for maintenance.

### ■ Optimized Harness Layout:

Optimized wire harness layout lowers twist failure rate.

### ■ Front Detachable Battery Cover:

Innovative Design, Easy for Battery Replacement.

### ■ Emergency Switch:

Upgraded emergency switch ensures safety.

### ■ Cover for Driving Wheel:

Strong cover for driving wheel ensures the safety of the operator.

### ■ Charger:

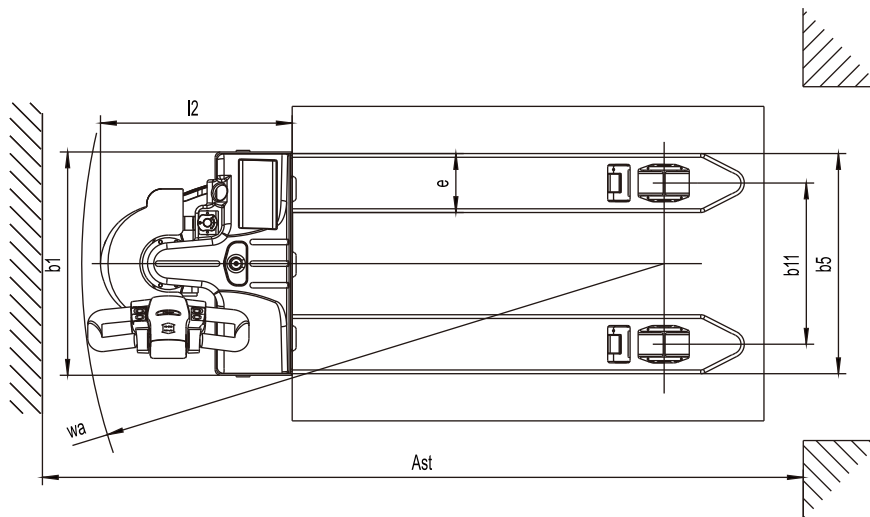
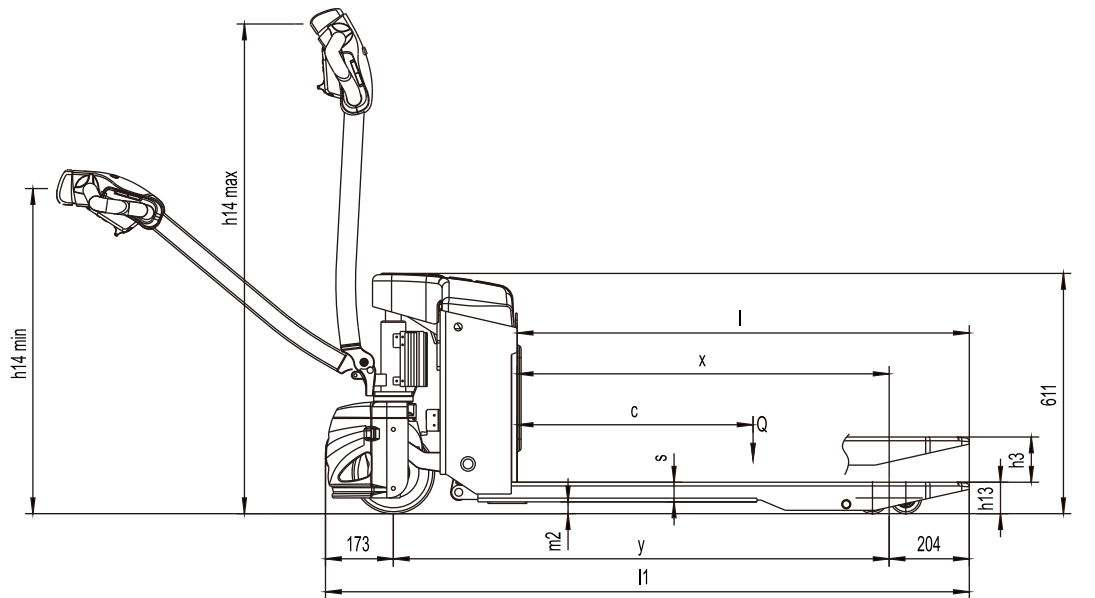
Upper-installed Charger, Better Heat-Exhausting, Higher Charging Efficiency



# Electric Pallet Truck 1.5t EPT20-15ET2

Distinguishing mark				
1.1	Manufacturer		EP	
1.2	Model designation		EPT20-15ET2	
1.3	Drive unit		Electric	
1.4	Operator type		pedestrian	
1.5	rated capacity	Q	kg	1500
1.6	Load center distance	c	mm	600
1.8	Load distance	x	mm	889/946
1.9	Wheelbase	y	mm	1261/1205
Weight				
2.1	Service weight (include battery)		kg	195
2.2	Axle loading, laden driving side/loading side		kg	565/1130
2.3	Axle loading, unladen driving side/loading side		kg	155/40
Types,Chassis				
3.1	Tyre type driving wheels/loading wheels			PU/ PU
3.2	Tyre size, driving wheels (diameter×width)		mm	Φ210×70
3.3	Tyre size, loading wheels (diameter×width)		mm	2x Φ78×60 (Φ78×88)
3.4	Tyre size, caster wheels (diameter×width)		mm	
3.5	Wheels, number driving, caster/loading (x=drive wheels)		mm	1x /4 ( 1x /2)
3.6	Track width, front,driving side	b <sub>10</sub>	mm	
3.7	Track width,rear,loading side	b <sub>11</sub>	mm	410 ( 535)
Dimensions				
4.4	Lift height	h <sub>3</sub>	mm	115
4.9	Height drawbar in driving position min./max.	h <sub>14</sub>	mm	790/1225
4.15	Lowered height	h <sub>13</sub>	mm	80
4.19	Overall length	l <sub>1</sub>	mm	1638
4.20	Length to face of forks	l <sub>2</sub>	mm	488
4.21	Overall width	b <sub>1</sub> / b <sub>2</sub>	mm	568 ( 685)
4.22	Fork dimensions	s/ e/ l	mm	50/150/1150
4.25	Distance between fork-arms	b <sub>5</sub>	mm	560 ( 685)
4.32	Ground clearance, center of wheelbase	m <sub>2</sub>	mm	30
4.34.1	Aisle width for pallets 1000 × 1200 crossways	Ast	mm	1739
4.34.2	Aisle width for pallets 800 × 1200 lengthways	Ast	mm	1939
4.35	Turning radius	Wa	mm	1485
Performance data				
5.1	Travel speed, laden/ unladen	km/ h	km/h	4/4.5
5.2	Lifting speed, laden/ unladen		m/ s	0.029/0.038
5.3	Lowering speed, laden/ unladen		m/ s	0.046/0.033
5.8	Max. gradeability, laden/unladen			2/6
5.10	Service brake type			Electromagnetic
Electric-engine				
6.1	Drive motor rating S2 60 min		kW	0.65
6.2	Lift motor rating at S3 15%		kW	0.84
6.3	The maximum allowed size battery		mm	
6.4	Battery voltage/nominal capacity K20			24/65
6.5	Battery weight		kg	22.5x2
Addition data				
8.1	Type of drive control			DC
10.5	Steering type			Mechanical
10.7	Sound pressure level at the driver's ear			74

- 1.The parameters in the table are of the standard model. For more information, please contact us.
- 2.The parameters are subject to change without notice.



## Option

Options	EPT20-15ET2
Fork length	• 800/915/1000/1070/1100/1300/1400mm
Fork width	• 520/600mm
Single load wheel	•
Driving wheel	• PU wheel with Pattern
Battery capacity	• 85AH
Backrest height	• 1220mm (48in)/1520mm (60in)