



**ENGLISH**

**KMR Marine Mount**

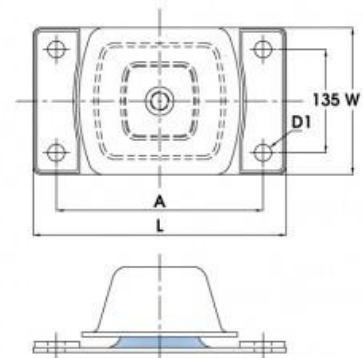
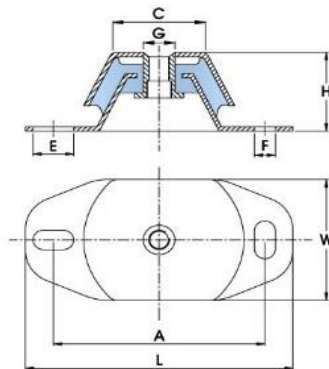
The KMR mount was originally designed for mounting a marine engine taking propeller thrust and now they are extensively used for mobile and static machinery to reduce vibration

Features:

- Metal top cover protects the rubber element from oil and diesel fuel contamination
- Built-in bump and rebound control feature
- 50% Low stiffness across the mount to vertical stiffness
- Longitudinal stiffness is 2.5 times the vertical and suitable to take engine thrust for marine engines

Applications:

- Static and mobile generator sets
- Pumps
- Compressors
- Marine engine (refer to Technical for mounting thrust and bolt fixing data)



RS Code	Part No	A	L	W	C	E	F	G	H	Max Load (kg)	Deflection (mm)
1623242	KMR12040M12-2	100	120	60	60	11	11	M12	40	81	5
1623229	KMR12040M12-1.55	100	120	60	60	11	11	M12	40	65	5
1623241	KMR23070M20-1	182	230	112	80	35	18	M20	73	350	5