

FEATURES

- Operating temperature range is from - 60 °C to + 300 °C
- RoHS and REACH compliant
- Silicon free

RS PRO MALE HOSE ADAPTER FOR LOCKING HOSE SELF

RS Stock No.: 2312662



RS PROfessionally Approved Products bring to you professional quality parts across all product categories. Our product range has been tested by engineers and provides a comparable quality to the leading brands without paying a premium price.

Product Description

The RS PRO male hose adapter for locking hose self is made up of brass. The working pressures and working temperatures depend on which type of tube is used, for this reason, the values must be determined in accordance with the tube's features. Hereunder, we specify the values of the maximum pressure advised for the fittings at a temperature of 20° C connected with copper tube, which has a thickness of 1 mm.

General Specifications

| | |
|----------------------|--|
| Coupling Type | Straight |
| Body Material | Brass |
| Application | Compressed Air, Pneumatic Automation, Textile, Packaging, Handling |

Mechanical Specifications

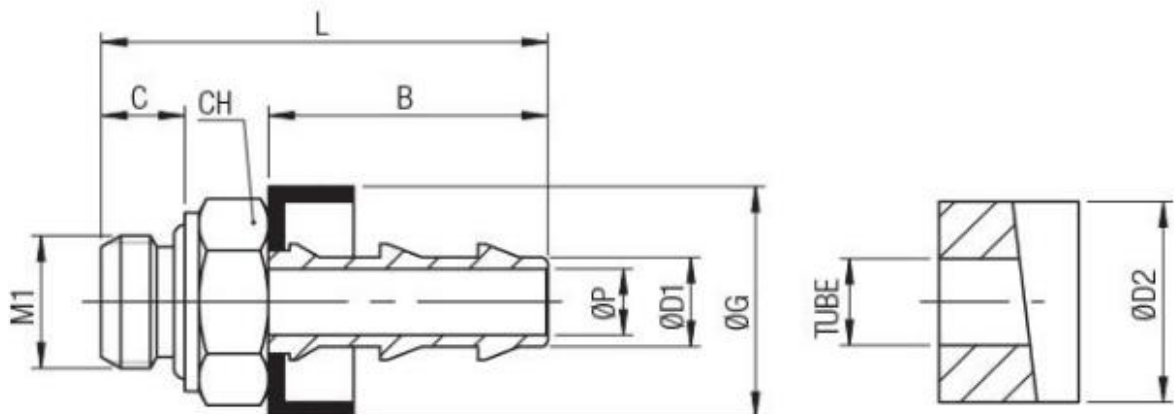
| | |
|----------------------------|------------------|
| Threaded Connection | 3/8 in BSPP Male |
| Thread Standard | BSPP |
| Thread Gender | Male |
| Connector Gender | Male |
| Hose Inner Diameter | 1/2in |
| Hose Outer Diameter | 19mm |
| Length | 45mm |
| Wrench Size | 22mm |

Approvals

| | |
|----------------------------------|--------------------------|
| Compliance/Certifications | RoHS and REACH Compliant |
|----------------------------------|--------------------------|

Similar Products

| Parameters | 2312502 | 2312503 |
|--------------------------|---|---|
| Brand | RS PRO | RS PRO |
| Coupling Type | Straight | Straight |
| Body Material | Brass | Brass |
| Maximum Working Pressure | 10bar | 10bar |
| Connector Gender | Male | Male |
| Hose Inner Diameter | 4mm | 6mm |
| Hose Outer Diameter | 11mm | 11mm |
| Application | Compressed Air, Pneumatic Automation, Textile, Packaging, Handling | Compressed Air, Pneumatic Automation, Textile, Packaging, Handling |



| Tube | M1 | Ø D1 | Ø D2 | CH | Ø G | L | B | C | Ø P | Pack. |
|------|-----|------|------|----|------|----|----|---|-----|-------|
| 1/2 | 3/8 | 12.7 | 19 | 22 | 23.5 | 45 | 28 | 9 | 10 | 10 |