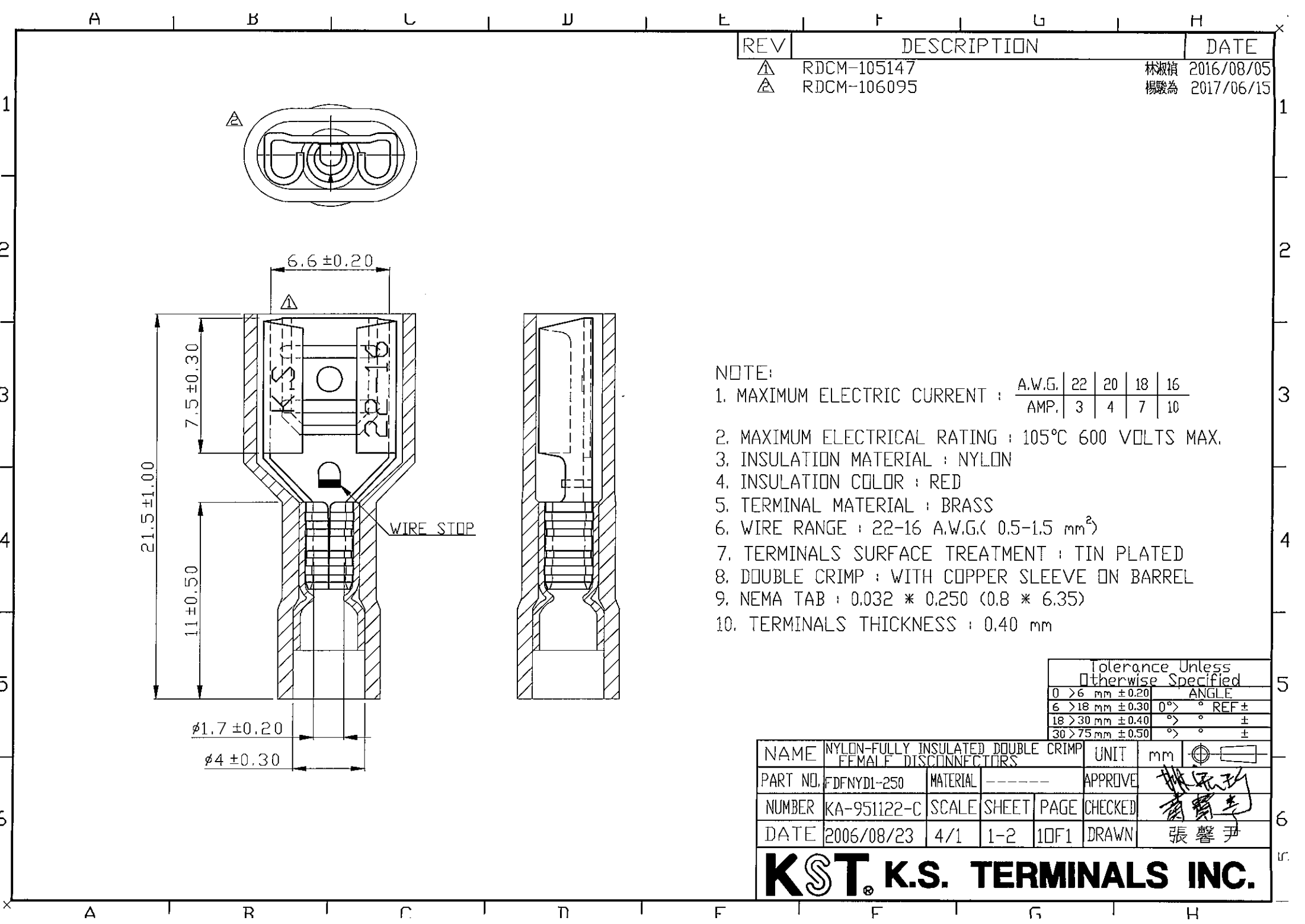


REV	DESCRIPTION	DATE
△	RDCM-105147	林淑禎 2016/08/05
△	RDCM-106095	楊駿為 2017/06/15



- NOTE:
1. MAXIMUM ELECTRIC CURRENT : 

A.W.G.	22	20	18	16
AMP.	3	4	7	10
  2. MAXIMUM ELECTRICAL RATING : 105°C 600 VOLTS MAX.
  3. INSULATION MATERIAL : NYLON
  4. INSULATION COLOR : RED
  5. TERMINAL MATERIAL : BRASS
  6. WIRE RANGE : 22-16 A.W.G.( 0.5-1.5 mm<sup>2</sup>)
  7. TERMINALS SURFACE TREATMENT : TIN PLATED
  8. DOUBLE CRIMP : WITH COPPER SLEEVE ON BARREL
  9. NEMA TAB : 0.032 \* 0.250 (0.8 \* 6.35)
  10. TERMINALS THICKNESS : 0.40 mm

Tolerance Unless Otherwise Specified	
0 > 6 mm ± 0.20	ANGLE
6 > 18 mm ± 0.30	0° REF ±
18 > 30 mm ± 0.40	° ±
30 > 75 mm ± 0.50	° ±

NAME	NYLON-FULLY INSULATED DOUBLE CRIMP FEMALE DISCONNECTORS			UNIT	mm	
PART NO.	DFNYDI-250	MATERIAL	-----	APPROVE		
NUMBER	KA-951122-C	SCALE	SHEET	PAGE	CHECKED	
DATE	2006/08/23	4/1	1-2	10F1	DRAWN	張馨尹

**KST. K.S. TERMINALS INC.**