



ENGLISH

Product Datasheet

Anti-Vandal Switch

Switch Pushbutton Stainless 12mm Maintained

Stock No:111-6511



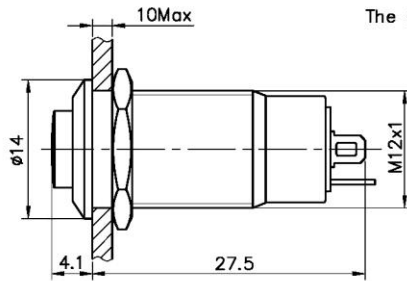
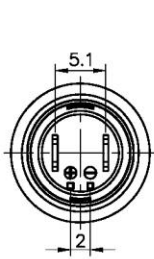
Package Contain:

- 1 x Anti-Vandal Switch
- 1 x Hex Nut
- 1 x O-Ring

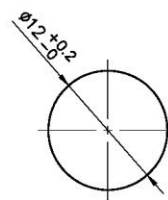
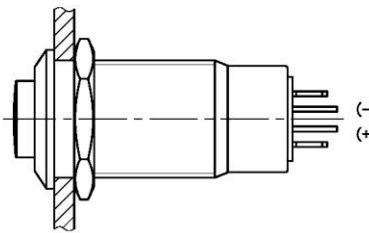
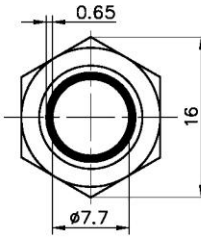
Specification:

| | | |
|----------------------------|--|--|
| SWITCH TYPE: | | 1116511 |
| POLES/THROWS: | | SPST |
| SWITCH FUNCTIONS: | | OFF-ON |
| ELECTRICAL CHARACTERISTICS | CONTACT RATING: | MAX. 1Amps @ 36VDC |
| | ELECTRICAL LIFE: | 50,000 make-and-break cycles at full load |
| | CONTACT RESISTANCE: | 50m-ohms max. initial @ 2-4VDC, 100mA |
| | INSULATION RESISTANCE: | Apply 500VDC for 1min±5sec. After which measurement to be made b/w terminals shall result 1,000M-ohms min. |
| | DIELECTRICAL STRENGTH: | 1,500VAC (50Hz-60Hz) RMS @ sea level shall result no damage to parts arcing or flashover |
| | OPERATING TEMPERATURE: | -20Celsius degree to +55Celsius degree |
| RELIABILITY PERFORMANCE | MECHANICAL LIFE: | Without load, 50,000cycles min. |
| | TORQUE: | 0.6Nm max. applied to nut |
| | PANEL THICKNESS: | 10mm max. |
| | OPERATING FORCE: | 3.5N max. |
| | OPERATING TRAVEL: | 2.5+/-0.2mm |
| | IP PROTECTION CLASS: | Front panel protection to IP40 |
| | IMPACT RESISTANCE: | IK08 |
| | SOLDERING HEAT RESISTANCE: | Max soldering temperature @ 260Celsius degree, immersion time 5+/-1sec, frequency of soldering process @ 2 times max. |
| | COLD TEST: | Stored at temperature -20(+/-3)Celsius degree for 48 hours, shall result no changes to switch's electrical performance |
| | HOT TEST: | Stored at temperature +55(+/-3)Celsius degree for 48 hours, shall result no changes to switch's electrical performance |
| HUMIDITY TEST: | Stored at temperature 40(+/-3)Celsius degree with relative humidity 90%~95% for 48 hours, shall result no changes to switch's electrical performance | |

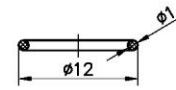
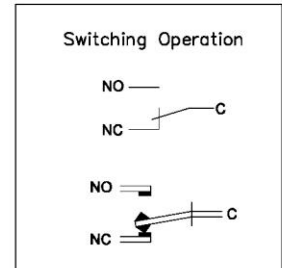
| | | |
|-------------------------------------|-----------------------|---|
| MATERIAL CHARACTERISTICS | BUTTON: | B42 : Stainless steel with varnished polished |
| | BUSHING: | |
| | BASE: | PA |
| | PLUNGER: | POM |
| | SPRING: | Steel wire |
| | CONTACT: | Copper alloy, silver plated |
| | TERMINALS: | Brass, silver plated |
| | HARDWARE: | Nut (Brass, nickel plated) |
| | LED: | Blue,(AC/DC Compatible) Voltage & Rating: 12V @ 15mA With an outer resistor |
| SOLDERING & CLEANING RECOMMENDATION | HAND SOLDERING: | Max. temperature @ 320Celsius degree (608F)with continuous soldering time @ 2sec. max. |
| | CLEANING PROCESS: | Noted, the switch is “not totally sealed” so it is important not to immerse/spray or clean unsealed areas of the switch during flux removal. Improper cleaning could cause switch deficiencies such as intermittence or open contact failures |
| PACKAGE | INTERNAL PACKAGING: | 1pcs per PE bag |
| | RoHS IDENTIFICATIONS: | A label marking “RoHS compliant” will be attached to the carton box. |



The shaded area is illuminated



PANEL CUTOUT



Seal Ring

| "X" | LED Color |
|-----|-----------|
| R | Red |
| G | Green |
| B | Blue |

| "y" | LED Volt. |
|-------------------------------------|------------|
| | 6V AC/DC |
| | 12V AC/DC |
| | 24V AC/DC |
| | 110V AC/DC |
| | 220V AC/DC |
| Other voltage can be made to order. | |