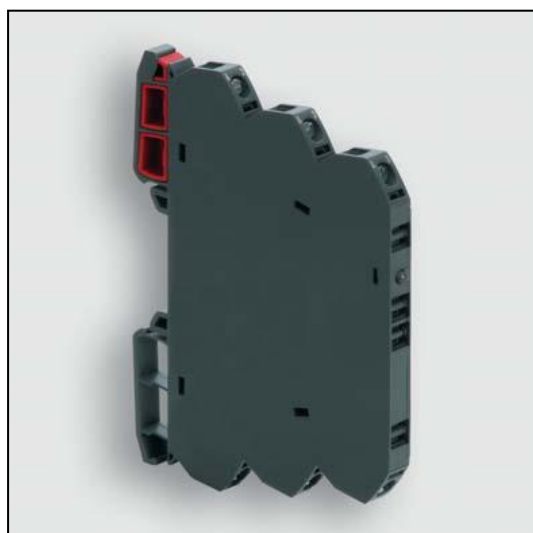


Datasheet

LCIS Relay Module

RS Stock number 888-6833



Identification	Type	LCIS-RGA230UP-S-1U
	Part-No.	8886833

Input	
Input voltage range	184.0 V – 253.0 V
Nominal voltage	AC/DC 230 V
Rated frequency	50–60 Hz
Rated current	3.5 mA
Interrupting voltage	<23 V
Protection device	Bridge rectifier
Max. length of connecting lead	DC 1000 m / AC 500 m
Status Indication	LED green

Load Side	
Contact type	1 change over contact
Min. switching voltage	AC/DC 17 V
Max. switching voltage	AC/DC 250 V
Min. switching current	AC/DC 5 mA
Max. switching current	AC/DC 6 A
Switching capacity AC 15	3 A
Switching capacity DC 13	at 24 V: 1 A, at 125 V: 200 mA, at 250 V: 100 mA
Max. switching capacity	1500 VA
Contact material	AgSnO2

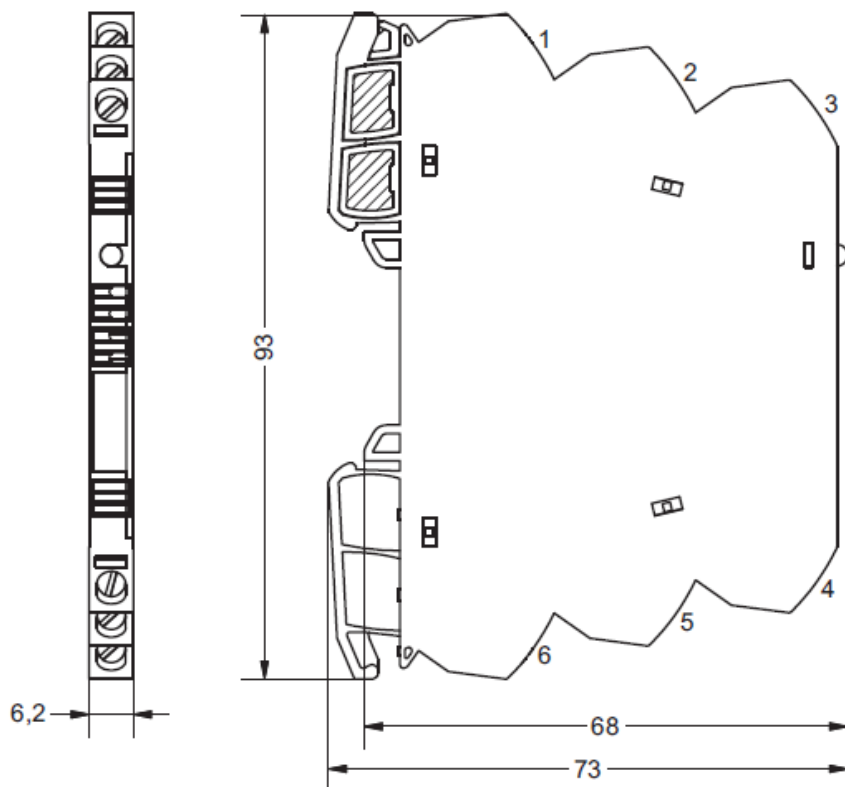


Mechanical service life	> 5 × 10 ⁷ operations
Switch-on delay	10 ms
Switch-off delay	15 ms
Clearance/creep. dist. (control/load side)	>5.5 mm

General

Housing material	PA 6.6 (UL 94 V-0)
Protection class	IP 20
Field installation	rail TS 35 (EN 60175)
Insulation voltage input/output	4.0 kV _{eff}
Safe isolation	yes
Rated insulation voltage (EN 50178)	300 V
Operation temperature range	-25 °C – 60 °C
Storage temperature range	-40 °C – 80 °C
Dimensions (w × h × d)	× 93.0 × 73.0 mm
Weight (kg/piece)	0.035
Approvals	UL, CSA, GL in preparation
Termination	Screw terminal: solid 0.25 – 2.0 mm ² / AWG 20 – 14 fine stranded with ferrule 0.25 – 1.5 mm ² / AWG 20 – 16 Stripping length: 8 mm Screw driver: 3.5 x 0.5 mm
Installation position	Optional

Dimensions



PIN assignment

