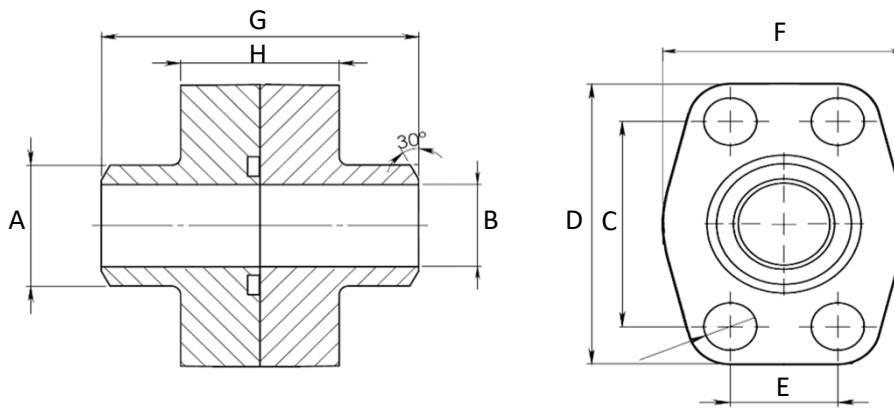


WELD ON DOUBLE FLANGES SCHXXS



Series 3000

| WP (Bar) | Size | Type | Dimensions | | | | | | | | |
|----------|--------|--------------|------------|-------|--------|-----|-------|-----|-----|----|----------|
| | | | A | B | C | D | E | F | G | H | Screws |
| 345 | 1/2" | DFS080STB6 | 21.5 | 6.3 | 38.10 | 54 | 17.48 | 46 | 72 | 32 | M8 x 30 |
| 345 | 3/4" | DFS100STB11 | 28.0 | 11.0 | 47.63 | 65 | 22.23 | 50 | 72 | 36 | M10 x 35 |
| 345 | 1" | DFS102STB15 | 34.0 | 15.2 | 52.37 | 70 | 26.19 | 55 | 76 | 36 | M10 x 35 |
| 276 | 1 1/4" | DFS104STB22 | 42.8 | 22.8 | 58.72 | 79 | 30.18 | 68 | 82 | 42 | M10 x 40 |
| 207 | 1 1/2" | DFS106STB28 | 48.6 | 28.0 | 69.85 | 93 | 35.71 | 78 | 90 | 50 | M12 x 45 |
| 207 | 2" | DFS108STB38 | 61.0 | 38.2 | 77.77 | 102 | 42.88 | 90 | 90 | 50 | M12 x 45 |
| 172 | 2 1/2" | DFS110STB45 | 77.0 | 45.0 | 88.90 | 114 | 50.80 | 105 | 100 | 50 | M12 x 45 |
| 138 | 3" | DFS112STB58 | 92.0 | 58.4 | 106.38 | 134 | 61.93 | 124 | 100 | 54 | M16 x 50 |
| 34 | 4" | DFS116STB80 | 115.5 | 80.0 | 130.18 | 162 | 77.77 | 146 | 96 | 54 | M16 x 50 |
| 34 | 5" | DFS118STB102 | 141.3 | 102.9 | 152.40 | 184 | 92.08 | 180 | 100 | 56 | M16 x 50 |

Series 6000

| WP (Bar) | Size | Type | Dimensions | | | | | | | | |
|----------|--------|----------------|------------|------|--------|-----|-------|-----|-----|-----|-----------|
| | | | A | B | C | D | E | F | G | H | Screws |
| 414 | 1/2" | DFS401STB012B6 | 21.5 | 6.3 | 40.49 | 54 | 18.24 | 46 | 72 | 32 | M8 x 30 |
| 414 | 3/4" | DFS402STB11 | 28.0 | 11.0 | 50.80 | 71 | 23.80 | 55 | 70 | 42 | M10 x 40 |
| 414 | 1" | DFS403STB15 | 34.0 | 15.2 | 57.15 | 81 | 27.76 | 65 | 82 | 42 | M12 x 45 |
| 414 | 1 1/4" | DFS404STB22 | 42.8 | 22.8 | 66.68 | 95 | 31.75 | 78 | 88 | 50 | M14 x 45 |
| 414 | 1 1/2" | DFS405STB28 | 48.6 | 28.0 | 79.38 | 112 | 36.50 | 94 | 100 | 60 | M16 x 50 |
| 414 | 2" | DFS406STB38 | 61.0 | 38.2 | 96.82 | 134 | 44.45 | 114 | 130 | 74 | M20 x 70 |
| 414 | 2 1/2" | DFS507STB45 | 76.6 | 45.0 | 123.80 | 180 | 58.70 | 152 | 160 | 90 | M24 x 80 |
| 414 | 3" | DFS508STB58 | 90.0 | 58.4 | 152.40 | 208 | 71.40 | 178 | 180 | 110 | M30 x 100 |

Designation for Order:

Double Flanges

(Flat side & Oring side)

| | |
|--------|-----------|
| ST52.3 | DFS...STB |
| SS316 | DFX...STB |

Counter-Flanges

(Flat side)

| | |
|--------|-----------|
| ST52.3 | GFS...STB |
| SS316 | GFX...STB |

Flanges

(Oring side)

| | |
|--------|-----------|
| ST52.3 | AFS...STB |
| SS316 | AFX...STB |