

Screw Holding



MagicRing Ball End Hex Metric T-handle

Item No.	Description	Case Pack
54040	4.0 x 150mm	10
54050	5.0 x 150mm	10
54060	6.0 x 150mm	10
54080	8.0 x 200mm	10
54086	10.0 x 200mm	10

No Stand



10 Pc. Ball End Hex Inch Dual Drive T-handle

Item No.	Description	Case Pack
54097	Soft Grip T-handle Set	1

Inch: 3/32, 7/64, 1/8, 9/64, 5/32, 3/16, 7/32, 1/4, 5/16, 3/8"



9 Pc. Metric Ball End Color Coded Hex L-keys

Item No.	Description	Case Pack
66980	Color Coded L-key Set	3

Metric: 1.5, 2.0, 2.5, 3.0, 4.0, 5.0, 6.0, 8.0, 10.0mm

Screw Holding



22 Pc. MagicRing Ball End Hex L-key Set

Item No.	Description	Case Pack
66992	Screw Holding L-key Set	3

Inch: .050, 1/16, 5/64, 3/32, 7/64, 1/8, 9/64, 5/32, 3/16, 7/32, 1/4, 5/16, 3/8"

Metric: 1.5, 2.0, 2.5, 3.0, 4.0, 5.0, 6.0, 8.0, 10.0mm



5 Pc. MagicRing Ball End Hex Metric T-handle

Item No.	Description	Case Pack
54090	Screw Holding T-handle Set	3

Metric: 4.0, 5.0, 6.0, 8.0, 10.0mm



Ball End Metric Hex L-key

Item No.	Description	Case Pack
66904	1.5 x 90mm	10
66908	2.0 x 99mm	10
66912	2.5 x 111mm	10
66918	3.0 x 125mm	10
66922	4.0 x 138mm	10
66926	5.0 x 158mm	10
66930	6.0 x 178mm	10
66937	8.0 x 198mm	10
66938	10.0 x 221mm	10



13 Pc. Inch Ball End Color Coded Hex L-keys

Item No.	Description	Case Pack
66981	Color Coded L-key Set	3

Inch: .050, 1/16, 5/64, 3/32, 7/64, 1/8, 9/64, 5/32, 3/16, 7/32, 1/4, 5/16, 3/8"

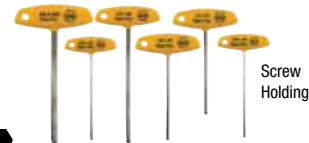


2 Pack Inch/Metric Ball End Hex L-key Sets

Item No.	Description	Case Pack
66993	Long L-key Sets	3

Inch: .050, 1/16, 5/64, 3/32, 7/64, 1/8, 9/64, 5/32, 3/16, 7/32, 1/4, 5/16, 3/8"

Metric: 1.5, 2.0, 2.5, 3.0, 4.0, 5.0, 6.0, 8.0, 10.0mm



6 Pc. MagicRing Ball End Hex Inch T-handle

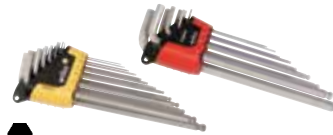
Item No.	Description	Case Pack
54091	Screw Holding T-handle Set	3

In: 5/32, 3/16, 7/32, 1/4, 5/16, 3/8"



MagicRing Ball End Metric Hex L-key

Item No.	Description	Case Pack
66916	3.0 x 125mm	10
66920	4.0 x 138mm	10
66924	5.0 x 158mm	10
66928	6.0 x 178mm	10
66936	8.0 x 198mm	10
66944	10.0 x 221mm	10



22Pc. ErgoStar In/MM Ball End Hex L-keys

Item No.	Description	Case Pack
66982	Long L-key Set	3

Inch: .050, 1/16, 5/64, 3/32, 7/64, 1/8, 9/64, 5/32, 3/16, 7/32, 1/4, 5/16, 3/8"

Metric: 1.5, 2.0, 2.5, 3.0, 4.0, 5.0, 6.0, 8.0, 10.0mm



9 Pc. Metric Ball End Hex L-key Set

Item No.	Description	Case Pack
66994	Long L-key Set	3

Metric: 1.5, 2.0, 2.5, 3.0, 4.0, 5.0, 6.0, 8.0, 10.0mm



8 Pc. Ball End Hex Metric Dual Drive T-handle

Item No.	Description	Case Pack
54092	Soft Grip T-handle Set	1

Metric: 2.0, 2.5, 3.0, 4.0, 5.0, 6.0, 8.0, 10.0mm

MagicRing Ball End Inch Hex L-key

Item No.	Description	Case Pack
66945	.050 x 2.8" no ring	10
66946	1/16 x 3.1" no ring	10
66947	5/64 x 3.5" no ring	10
66950	3/32 x 3.9" no ring	10
66952	7/64 x 4.3" no ring	10
66953	1/8 x 4.6"	10
66955	9/64 x 5.2"	10
66956	5/32 x 5.7"	10
66959	3/16 x 6.2"	10
66962	7/32 x 6.7"	10
66965	1/4 x 7.3"	10
66968	5/16 x 8.0"	10
66971	3/8 x 8.8"	10



13 Pc. ErgoStar Inch Ball End Hex L-key Set

Item No.	Description	Case Pack
66988	Long L-key Set	3

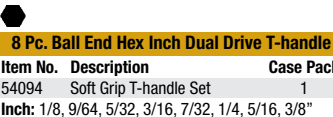
Inch: .050, 1/16, 5/64, 3/32, 7/64, 1/8, 9/64, 5/32, 3/16, 7/32, 1/4, 5/16, 3/8"



6 Pc. Metric Ball End Hex L-key Set

Item No.	Description	Case Pack
66995	Long L-key Set	3

Metric: 1.5, 2.0, 2.5, 3.0, 4.0, 5.0mm



8 Pc. Ball End Hex Inch Dual Drive T-handle

Item No.	Description	Case Pack
54094	Soft Grip T-handle Set	1

Inch: 1/8, 9/64, 5/32, 3/16, 7/32, 1/4, 5/16, 3/8"



9 Pc. MagicRing Ball End Metric Hex L-key Set

Item No.	Description	Case Pack
66990	Screw Holding L-key Set	3

Metric: 1.5, 2.0, 2.5, 3.0, 4.0, 5.0, 6.0, 8.0, 10.0mm



9 Pc. ErgoStar Metric Ball End Hex L-key Set

Item No.	Description	Case Pack
66996	Long L-key Set	3

Metric: 1.5, 2.0, 2.5, 3.0, 4.0, 5.0, 6.0, 8.0, 10.0mm



8 Pc. Ball End Hex Metric Dual Drive T-handle

Item No.	Description	Case Pack
54095	Soft Grip T-handle Set	1

Metric: 2.0, 2.5, 3.0, 4.0, 5.0, 6.0, 8.0, 10.0mm



13 Pc. MagicRing Ball End Inch Hex L-key Set

Item No.	Description	Case Pack
66991	Screw Holding L-key Set	3

Inch: .050, 1/16, 5/64, 3/32, 7/64, 1/8, 9/64, 5/32, 3/16, 7/32, 1/4, 5/16, 3/8"



11 Pc. Ball End Hex Metric L-key Set

Item No.	Description	Case Pack
66998	Ball End Hex Set	3

Hex Metric: 1.5, 2.0, 2.5, 3.0, 4.0, 5.0, 6.0, 7.0, 8.0, 9.0, 10.0mm