

FEATURES

- Rated currents up to 10A
- Quick connect(6.3*0.8mm)
- The compact size can be applied to various situations.

RS PRO Power Line Filters

RS Stock No.: 2378677, 2378678



RS Professionally Approved Products bring to you professional quality parts across all product categories. Our product range has been tested by engineers and provides a comparable quality to the leading brands without paying a premium price.

Product Description

- Portable electrical and electronic equipment
- Single-phase power supply , switch-mode power supply
- Medical equipment
- Small and medium-sized machines and household equipment etc

General Specifications

The products have high attenuation, based on chokes with high saturation. Resistance and excellent thermal behavior. (R5) types comply with the requirements of IEC/EN60601-1 for safety clearance, leakage current and hipot testing. There are a variety of parts and combinations to meet different customer's EMC tests. Customized products according to customer's requirements.

Mechanical Specifications

size	44X29X22mm (L X W X H)
weight	0.069kgs

Electrical Specifications

Rated Voltage Max.	250VAC,50/60Hz
Operating frequency	DC to 400Hz
Rated currents	6A@40°C
Hipot Rating	L-N 1450VDC, L/N-G 2000VAC/2250VDC

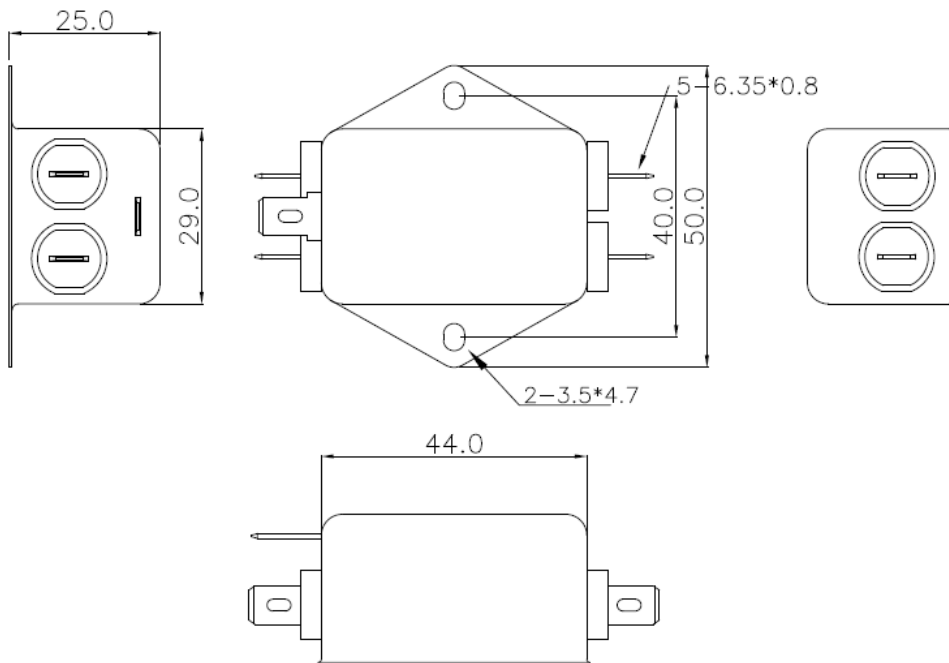
Protection Category

according to IEC 60529 IP40

Approvals

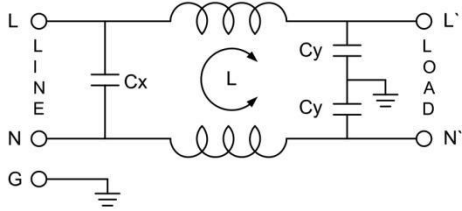
Declarations	CUL;TUV;CQC;CE
Standards Met	UL1283, CSA C22.2 No.8; IEC/EN 60939;; CQC GB 15288/GB 15287-2008

Physical Dimensions:



Power Line Filters

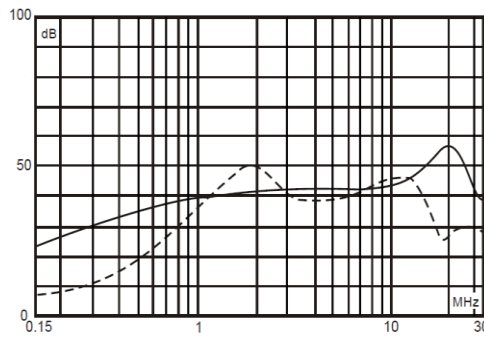
Electrical Schematic:



Insertion loss table(In 50ohm system according IEC/CISPR No.17)

———— Common mode - - - - - Differential mode

6A



packaging

