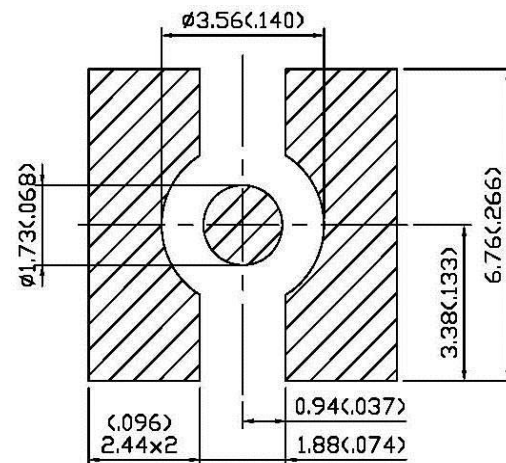
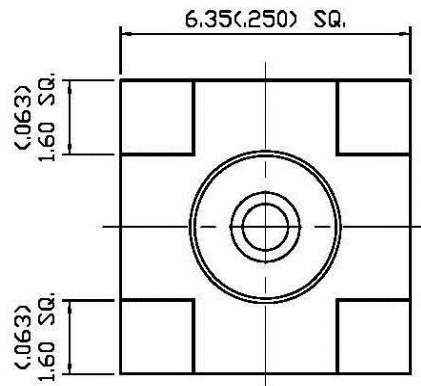
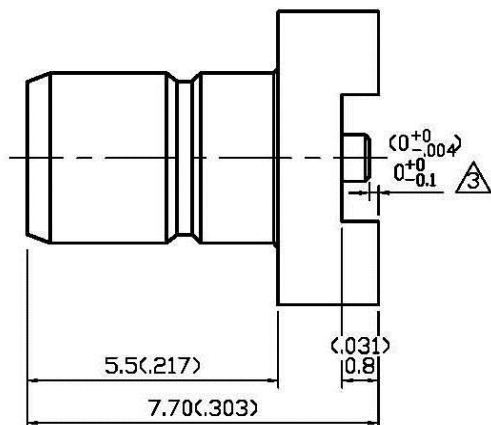


NO	DESCRIPTION	DATE
①	BACKGROUND FORMAT UPDATED	07.15.02'
②	ADD TAPE AND REEL PACKAGING	10.17.05'
③	ADD $0^{+0}_{-0.1}$	08.16.07'
④	ADD RECOMMENDED LAND PATTERN	09.16.08'
⑤	WORKING VOLTAGE → VOLTAGE RATING DEL. PROOF VOLTAGE	03.26.13'



④ RECOMMENDED LAND PATTERN

1.0 ELECTRICAL

- 1.1 FREQUENCY RANGE: DC-4 GHz
- 1.2 NOMINAL IMPEDANCE: 50 OHM
- 1.3 VOLTAGE RATING: 335 VOLTS MAX. ⑤
- 1.4 VSWR: 1.3 MAX.

2.0 MATERIALS

- 2.1 BODIES: BRASS PER JIS-C3604
- 2.2 CENTER CONTACT: BRASS PER JIS-C3604
- 2.3 INSULATION: TEFLON PER ASTM D1457 AND ASTM D1710

3.0 FINISHES AND OTHERS

- 3.1 SEE BELOW TABLE FOR DETAILS.

4.0 MECHANICAL

- 4.1 INTERFACE IN ACCORDANCE WITH: MIL-STD-348A

5.0 ENVIRONMENTAL

- 5.1 OPERATING TEMPERATURE RANGE: -85° C TO +185° C

NO	DESCRIPTION	MATERIAL	Q'TY	FINISH
3	CENTER CONTACT	BRASS	1	GOLD 30 μ" MIN.
2	INSULATION	TEFLON	1	NONE
1	BODY	BRASS	1	GOLD 3 μ" MIN.



APPROVED

by _____ DATE: _____

DESCRIPTION		SMB STRAIGHT SURFACE MOUNT JACK RECEPTACLE							
製圖	DRAWN	TOLERANCE	品名	24-14-3	T.G.G	日期	DATE	版次	REV.
	Yoko		.X	±0.2	\ROHS COMPLIANT <50Ω>	11.06.00'	A-5		
檢圖	CHECK	單位	UNIT	DWG.NO. 24-0072					
	Arc		.XX	mm(in)					
認定	APPROVAL	比例	SCALE						
	Angela		.XXX	±0.05	8:1				
	ANGLE	±5°							