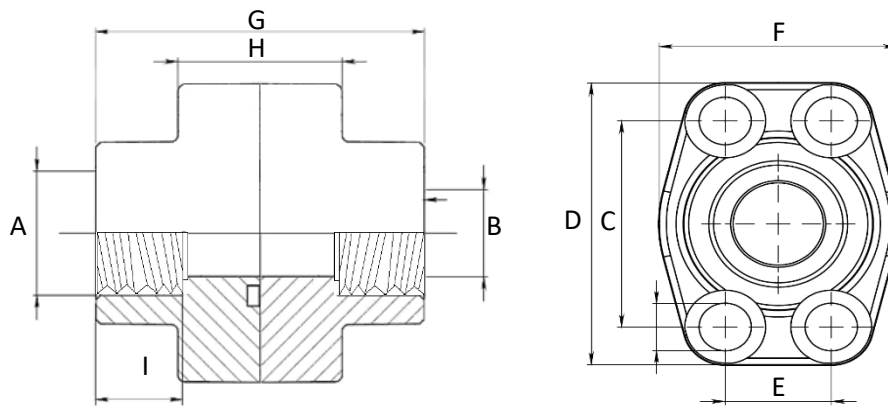


NPT THREADED DOUBLE FLANGES



Series 3000

WP (Bar)	Size	Type	Dimensions									
			A	B	C	D	E	F	G	H	I	Screws
345	1/2"	DFS080N	1/2"	13	38,10	57	17,48	46	72	32	19	M8x30
345	1/2"	DFS080N038	3/8"	13	38,10	57	17,48	46	72	32	19	M8x30
345	3/4"	DFS100N	3/4"	19	47,63	65	22,23	50	72	36	19	M10x35
345	3/4"	DFS100N012	1/2"	13	47,63	65	22,23	50	72	36	19	M10x35
345	1"	DFS102N	1"	25	52,37	70	26,19	55	76	36	22	M10x35
345	1"	DFS102N034	3/4"	19	52,37	70	26,19	55	70	42	19	M10x40
276	1"1/4	DFS104N	1"1/4	32	58,72	79	30,18	68	82	42	22	M10x40
276	1"1/4	DFS104N100	1"	25	58,72	81	30,18	65	84	50	22	M10x40
207	1"1/2	DFS106N	1"1/2	38	69,85	93	35,71	78	90	50	24	M12x45
207	1"1/2	DFS106N114	1"1/4	32	69,85	95	35,71	78	90	54	22	M12x45
207	2"	DFS108N	2"	51	77,77	102	42,88	90	90	50	30	M12x45
207	2"	DFS108N112	1"1/2	38	77,77	102	42,88	90	90	50	24	M12x45
172	2"1/2	DFS110N	2"1/2	63	88,90	114	50,80	105	100	50	30	M12x45
138	3"	DFS112N	3"	73	106,38	134	61,93	124	100	54	34	M16x50
34	3"1/2	DFS114N	3"1/2	89	120,65	152	69,85	136	96	54	34	M16x50
34	4"	DFS116N	4"	99	130,18	162	77,77	146	96	54	34	M16x50
34	5"	DFS118N	5"	120	152,40	184	92,08	180	100	56	30	M16x55

Designation for Order:

Double Flanges
(Flat side & Oring side)

ST52.3	DFS...STB
SS316	DFX...STB

Counter-Flanges
(Flat side)

ST52.3	GFS...STB
SS316	GFX...STB

Flanges
(Oring side)

ST52.3	AFS...STB
SS316	AFX...STB