

**Information required when ordering replacement parts:**

- Give part number of parts needed, brake model number and brake serial number. The brake model and serial number may identify special brakes not covered by this parts list.
- When ordering hubs, specify shaft diameter (hub bore) and keyway.
- Consult factory regarding support plate assembly for vertical and extra items.

- Enclosures are designated as follows:

O = Standard  
E - Dust-tight, waterproof (DTWP)

**General Information**

- Vertical details, see P/N 8-078-931-05 and 8-078-962-06.

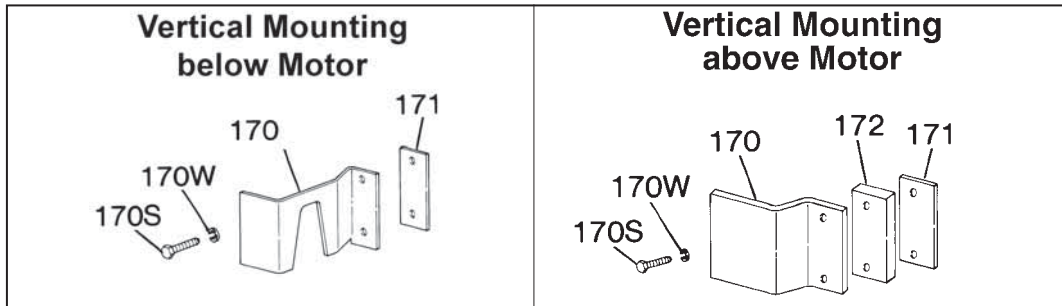
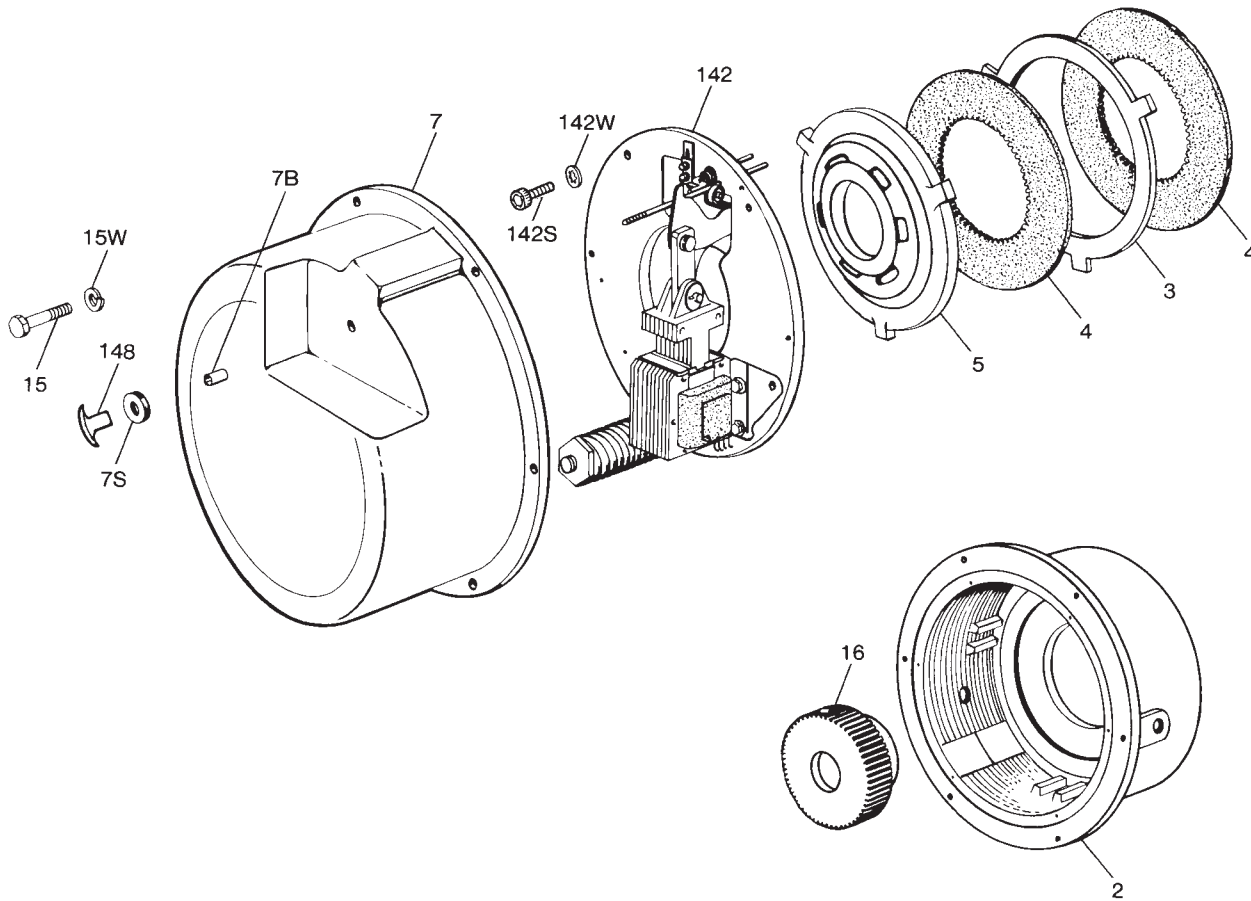


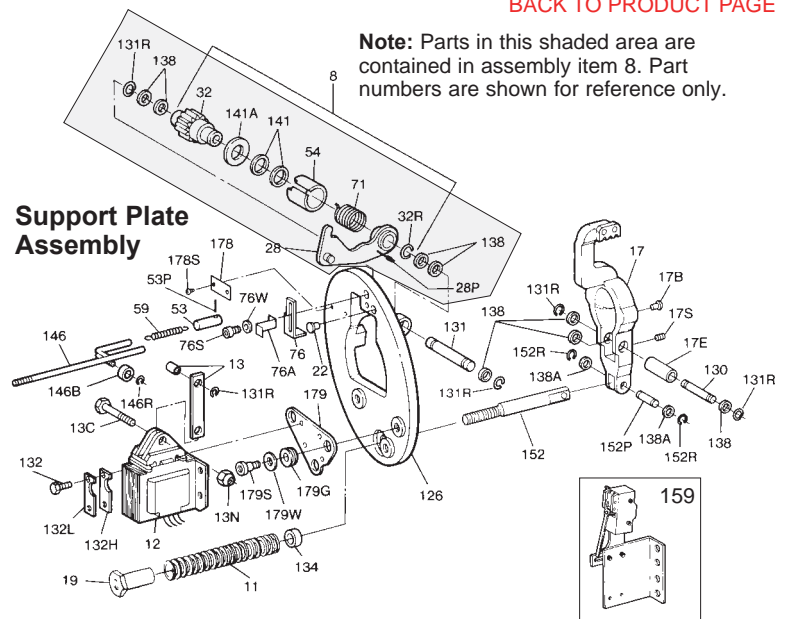
TABLE 1  
Components of Standard Horizontal AC or DC Units and Standard Modifications

				Torque (lb-ft)		125				175				230															
				Current		AC		DC		AC		DC		AC		DC													
				Enclosure		O	E	O	E	O	E	O	E	O	E	O	E												
				Brake Model Number→		1-081-011-02		1-081-012-02		1-081-015-02		1-081-016-02		1-081-021-02		1-081-022-02		1-081-025-02		1-081-026-02		1-081-031-02		1-081-032-02		1-081-035-02		1-081-036-02	
Type of Modification	Item No.	Description	Part Number↓	1-081-011-02	1-081-012-02	1-081-015-02	1-081-016-02	1-081-021-02	1-081-022-02	1-081-025-02	1-081-026-02	1-081-031-02	1-081-032-02	1-081-035-02	1-081-036-02														
	2	Endplate Endplate Endplate and oil seal assembly Endplate and oil seal assembly	8-002-226-01 8-002-227-01 5-22-1011-00 5-22-1012-00	1		1		1		1		1		1		1													
	2S	Seal (component of endplate and seal assembly)	9-02-0014-00		1		1		1		1		1		1														
	3	Stationary disc	8-003-211-01	1	1	1	1	1	1	1	1	2	2	2	2														
	4	Friction disc	8-004-104-00	2	2	2	2	2	2	2	2	3	3	3	3														
	5	Pressure plate	8-005-109-01	1	1	1	1	1	1	1	1	1	1	1	1														
	7	Housing, bearing and seal assembly	5-07-2012-00	1	1	1	1	1	1	1	1	1	1	1	1														
	7B	Housing bearing (component of Item 7)	9-04-0050-00	1	1	1	1	1	1	1	1	1	1	1	1														
	7D	Pipe plug (drain)	9-33-0325-00	1	1	1	1	1	1	1	1	1	1	1	1														
	7S	Housing seal (component of Item 7)	9-02-0017-00	1	1	1	1	1	1	1	1	1	1	1	1														
	15	Machine screw (housing)	9-17-3216-00	6	6	6	6	6	6	6	6	6	6	6	6														
	15W	Lock washer (housing)	9-45-1332-00	6	6	6	6	6	6	6	6	6	6	6	6														
	16	Hub and set screw assembly	5-16-1102-00	1	1	1	1	1	1	1	1	1	1	1	1														
	69	Hub and set screw assembly Gasket (housing to endplate)	5-16-1104-00 8-069-203-00	1	1	1	1	1	1	1	1	1	1	1	1														
	140	Lead wire bushing (endplate) (internal connection only) Lead wire bushing (endplate) (internal connection only)	8-140-002-08 8-140-002-10	1	1	1	1	1	1	1	1	1	1	1	1														
	142	Support plate assembly Support plate assembly Support plate assembly Support plate assembly Support plate assembly Support plate assembly	5-42-2071-00 5-42-2072-00 5-42-2073-00 5-42-2074-00 5-42-2075-00 5-42-2076-00	1	1	1	1	1	1	1	1	1	1	1	1	1	1												
	142S	Cap screw (support plate)	9-17-5016-00	6	6	6	6	6	6	6	6	6	6	6	6														
	142W	Conical spring washer (support plate)	9-46-0006-00	6	6	6	6	6	6	6	6	6	6	6	6														
	148	Release knob	8-148-804-00	1	1	1	1	1	1	1	1	1	1	1	1														
Components for Standard Modifications (most items not shown)																													
Vertical Mounting Above Motor	2	Endplate with pins Endplate with pins Endplate and seal assembly with pins Endplate and seal assembly with pins	5-20-1001-00 5-20-1002-00 5-22-1015-00 5-22-1016-00	1		1		1		1		1		1		1													
	3	Stationary disc	8-003-211-01	1	1	1	1	1	1	1	1	2	2	2	2														
	5	Pressure plate	8-005-109-02	1	1	1	1	1	1	1	1	1	1	1	1														
	7	Housing and side release assembly	5-07-1002-00	1	1	1	1	1	1	1	1	1	1	1	1														
	Not Shown	Vertical mounting pin Vertical mounting pin Vertical mounting spring kit	8-061-204-00 8-061-205-00 5-96-0102-00	3	3	3	3	3	3	3	3	3	3	3	3														
	170	Plunger guide bracket	Kit 5-55-2002-00	1	1	1	1	1	1	1	1	1	1	1	1														
	170S	Cap screw (bracket)																											
	170W	Lock washer (bracket)																											
	171	Shim (bracket)																											
	172	Spacer																											
	Release plate Screw Lock nut Spring pin Release rod	8-170-102-00 9-16-3012-00 9-40-3730-00 9-32-4055-00 8-146-201-01		1	1	1	1	1	1	1	1	1	1	1	1														
Foot Mounting	34	Foot mounting kit, comprised of:	5-55-2021-00	1	1	1	1	1	1	1	1	1	1	1	1														
	34S	Foot mounting bracket	8-034-205-01	4	4	4	4	4	4	4	4	4	4	4	4														
	39W	Cap screw Lock washer	9-17-1624-00 9-45-1316-00	4	4	4	4	4	4	4	4	4	4	4	4														
Vertical Mounting below Motor	3	Stationary disc	8-003-211-01	1	1	1	1	1	1	1	1	2	2	2	2														
	5	Pressure plate (less pins)	8-005-109-03	1	1	1	1	1	1	1	1	1	1	1	1														
	Not Shown	Vertical mounting pin Vertical mounting pin Vertical spring kit	8-061-206-00 8-061-207-00 5-96-0102-00	3	3	3	3	3	3	3	3	3	3	3	3														
	170	Plunger guide bracket	8-170-205-00	2	2	2	2	2	2	2	2	2	2	2	2														
	170S	Cap screw (bracket)	8-350-002-00	2	2	2	2	2	2	2	2	2	2	2	2														
	171	Shim (bracket)	8-454-016-00	**	**	**	**	**	**	**	**	**	**	**	**														
Shaft Through Housing	7	Housing, bearing and seal assembly	5-07-2014-00	1	1	1	1	1	1	1	1	1	1	1	1														
	24	Shaft bushing (specify bore)	8-024-202-01	1	1	1	1	1	1	1	1	1	1	1	1														
	24L	Set screw (shaft bushing)	9-20-3004-00	2	2	2	2	2	2	2	2	2	2	2															
	24S	Shaft seal (component of item 7)	9-02-0010-00	1	1	1	1	1	1	1	1	1	1	1	1														
Space Heater	Not Shown	Heater (115 volt circuit) Kit Heater (230 volt circuit) Kit	5-27-2006-00 5-27-2007-00	1	1	1	1	1	1	1	1	1	1	1	1														

**Table 2** (see note)  
Components of  
Support Plate Assemblies

Item No.	Description	Part Number	Brake Size Torque (lb-ft)		125		175		230	
			AC	DC	AC	DC	AC	DC		
8	Solenoid lever and pinion assembly (comprised of Items 28, 32, 32R, 54, 71, 141 and 141A)	5-66-7321-00	1	1	1	1	1	1	1	1
11	Pressure spring (green) Pressure spring (yellow)	9-70-4601-00 9-70-6001-00	1	1						
13	Solenoid link and bearing assembly	5-55-2006-00	1	1	1	1	1	1	1	1
13C	Cap screw (solenoid link)	8-157-703-00	1	1	1	1	1	1	1	1
13N	Nut (solenoid link)	9-40-3732-00	1	1	1	1	1	1	1	1
17	Lever arm assembly	5-17-2001-00	1	1	1	1	1	1	1	1
17B	Pressure button	9-25-1908-00	2	2	2	2	2	2	2	2
17E	Eccentric sleeve (lever arm)	8-054-201-00	1	1	1	1	1	1	1	1
17S	Set screw (lever arm)	9-20-3004-00	2	2	2	2	2	2	2	2
19	Pressure spring nut	8-019-202-01	1	1	1	1	1	1	1	1
22	Solenoid lever stop	8-022-603-00	1	1	1	1	1	1	1	1
53	Manual release spring tube	8-053-201-00	1	1	1	1	1	1	1	1
53P	Roll pin (spring tube)	9-32-4012-00	1	1	1	1	1	1	1	1
59	Release spring	9-71-0004-00	1	1	1	1	1	1	1	1
76	Wrap spring stop	8-076-203-00	1	1	1	1	1	1	1	1
76A	Holding plate (wrap spring stop)	8-076-204-00	1	1	1	1	1	1	1	1
76S	Cap screw (spring stop)	9-17-2812-00	2	2	2	2	2	2	2	2
76W	Lock washer (spring stop)	9-45-1328-00	2	2	2	2	2	2	2	2
126	Support plate and bearing assembly	5-26-2004-00	1	1	1	1	1	1	1	1
130	Pivot pin (lever arm)	8-118-204-00	1	1	1	1	1	1	1	1
131	Pivot pin (solenoid lever)	8-131-201-00	1	1	1	1	1	1	1	1
131R	Retaining ring (pivot pin)	9-03-0020-00	5	5	5	5	5	5	5	5
132	Cap screw (solenoid mounting)	8-350-008-00	4	4	4	4	4	4	4	4
132H	Holding plate (solenoid mounting)	8-076-207-00	2	2	2	2	2	2	2	2
132L	Lock plate (solenoid mounting)	8-076-206-00	2	2	2	2	2	2	2	2
134	Pressure spring spacer	8-134-001-02	1	1	1	1			1	1
	Pressure spring spacer	8-134-001-03								
138	Bearing (washer type)	8-138-201-00	8	8	8	8	8	8	8	8
138A	Bearing (washer type)	8-138-701-00	2	2	2	2	2	2	2	2
146	Release rod	8-146-201-00	1	1	1	1	1	1	1	1
146B	Ball bearing (release rod)	9-01-6801-00	1	1	1	1	1	1	1	1
146R	Retaining ring (release rod)	9-03-0007-00	1	1	1	1	1	1	1	1
152	Pressure spring stud	8-152-201-00	1	1	1	1	1	1	1	1
152P	Pivot pin (spring stud)	8-118-202-00	1	1	1	1	1	1	1	1
152R	Retaining ring (spring stud)	9-03-0019-00	2	2	2	2	2	2	2	2
159	Brake release interlock kit (standard manual release)	5-55-2005-00	1	1	1	1	1	1	1	1
	Brake release interlock kit (side manual release)	5-55-2004-00	1	1	1	1	1	1	1	1
178	Instruction plate	8-078-055-00	1	1	1	1	1	1	1	1
178S	Drivescrew	9-25-1303-00	2	2	2	2	2	2	2	2
179	Solenoid mounting plate	8-179-205-01	1	1	1	1	1	1	1	1
179G	Grommet (mounting plate)	8-147-202-00	3	3	3	3	3	3	3	3
179S	Shoulder screw (mounting plate)	9-26-1108-00	3	3	3	3	3	3	3	3
179W	Washer (mounting plate)	8-138-202-00	3	3	3	3	3	3	3	3

NOTE: Some brakes manufactured prior to the "-20" series had solenoids which were mounted on (4) rubber shock mounts. Conversion kits are available to replace these mounts. Kit 5-12-9595 replaces 1" diameter by 17/32" high mounts with 1/4-20 studs. Kit 5-12-9594 replaces 1-1/4" diameter by 3/4" high mounts with 5/16-18 studs. Kit 5-12-9593 must replace mounts on serial numbers B-960232 through 69 and B-989748.

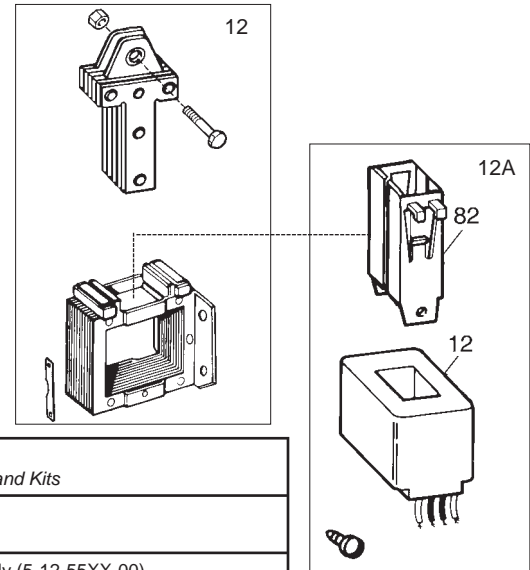


Note: Parts in this shaded area are contained in assembly item 8. Part numbers are shown for reference only.

**Solenoid and Coil Assembly**

**Table 3**  
Components of Solenoid and Coil Assemblies

Item	Description	Part Number	
AC Brakes			
12	Solenoid Assembly (AC)	5-12-5529-00	
12A	No. 9 coil assembly 60 Hz	115 Vac	5-96-6901-33
		230 Vac	5-96-6902-33
		460 Vac	5-96-6904-33
		575 Vac	5-96-6905-33
		115/230 Vac	5-96-6907-33
	230/460 Vac	5-96-6909-33	



**Table 4**  
Contents of Assemblies and Kits

Item No.	Description
12	Solenoid assembly (5-12-55XX-00) 1 - Plunger 1 - Frame 2 - Lock plates 1 - Solenoid link cap screw 1 - Solenoid link nut 1 - Cable clamp and screw (DC only)
12A	Coil assembly (5-96-69XX-33) 1 - Coil 2 - Plunger guides 2 - Plunger guide screws
159	Brake switch kit (5-55-2004-00 or 5-55-2005-00) (brake release interlock switch - N.O.) 1 - Microswitch 1 - Bracket, microswitch 1 - Bracket, mounting 1 - Mounting hardware