

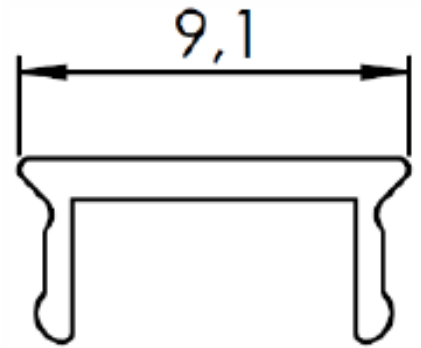
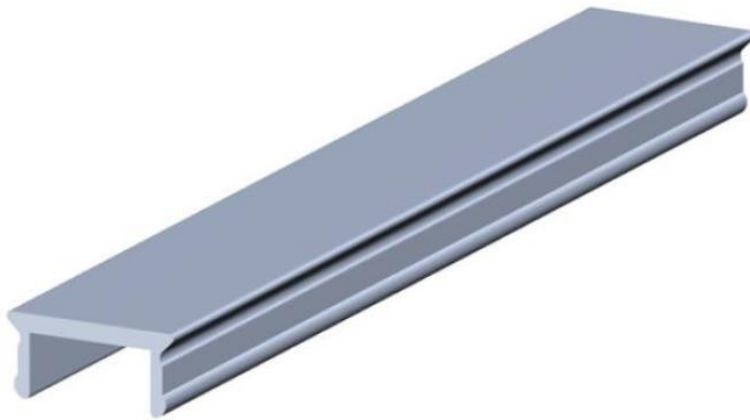


ENGLISH

# Datasheet

## Cover Profile

RS Stock number 850-8518



### Technical data strut profiles

EN AW – AlMgSi0,5

DIN EN 573

Tolerances

DIN EN 12020-2

Anodizing process

E6C0

G

0,033 kg/m

VPE / PU

10 pcs.

L

2000 mm