

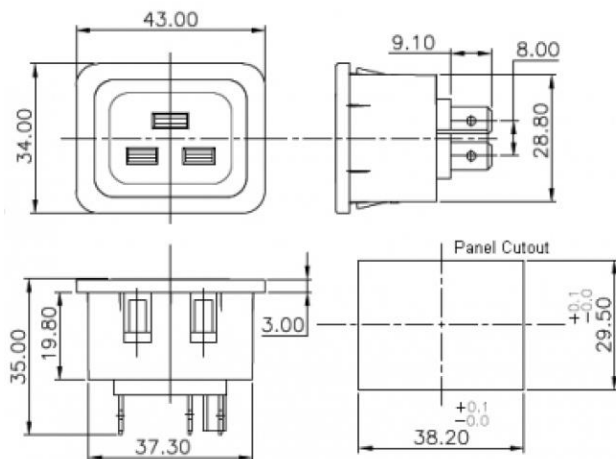
Datasheet

Snap Mounting IEC Outlet

RS Stock 896-2151



Dimensions: (mm)

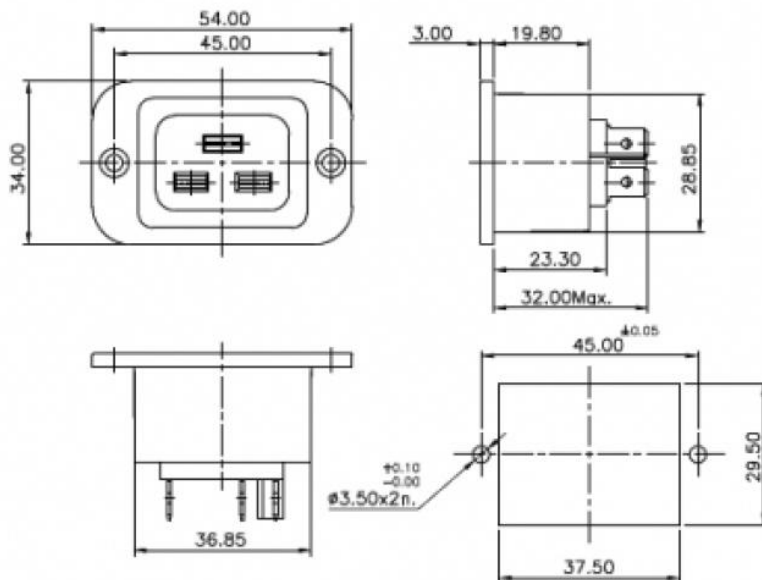


Specifications

V / A Rating:	16 Amps (VDE), 20 Amps (UL,C-US) 250 VAC
Panel Thickness:	Standard 1.5, Other - On request
Reference Standards:	IEC - 60320 – 1
Material (Contacts - Terminal):	Copper Alloy, Tin Plating
Material (Body, Cable Lock):	Nylon-6, GF20% V2
Permissible Temp. (For Soldering):	270 deg.C for 5 Sec. max
Permissible Temp. (With / Without Load):	0 to 70 deg.C
Terminals:	Solder type or fast-on 6.3 X 0.8
Mounting:	Panel, snap-in type
H.V. Breakdown Test (for 1 Minute):	2 KV AC
Insulation Resistance @ 500 VDC:	1000 Mohms Min.
Contact Resistance (Initial):	10 mohms Max.



Dimensions: (mm)

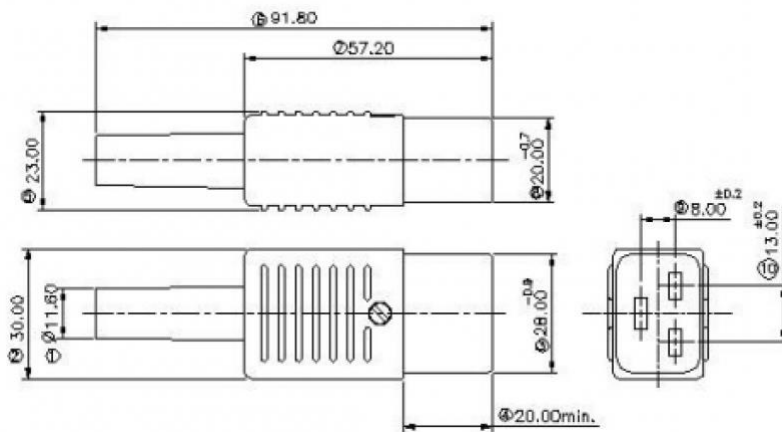


Specifications

V / A Rating:	16 Amps (VDE), 20 Amps (UL,C-US) 250 VAC
Panel Thickness:	NA
Reference Standards:	IEC - 60320 - 1
Material (Contacts - Terminal):	Copper Alloy, Tin Plating
Material (Body, Cable Lock):	Nylon-6, GF20% V2
Permissible Temp. (For Soldering):	270 deg.C for 5 Sec. max
Permissible Temp. (With / Without Load):	0 to 70 deg.C
Terminals:	Solder type or fast-on 6.3 X 0.8
Mounting:	Panel, screw type
H.V. Breakdown Test (for 1 Minute):	2 KV AC
Insulation Resistance @ 500 VDC:	1000 Mohms Min.
Contact Resistance (Initial):	10 mohms Max.



Dimensions: (mm)



Specifications

V / A Rating:	16 Amps (VDE), 20 Amps (UL,C-US) 250 VAC
Panel Thickness:	NA
Reference Standards:	IEC - 60320 – 1
Material (Contacts - Terminal):	Copper Alloy, Nickel Plating
Material (Body, Cable Lock):	Nylon
Permissible Temp. (For Soldering):	NA
Permissible Temp. (With / Without Load):	-20 to + 85 deg.C
Terminals:	Screw Type
Mounting:	Rewireable
H.V. Breakdown Test (for 1 Minute):	2 KV AC
Insulation Resistance @ 500 VDC:	
Contact Resistance (Initial):	