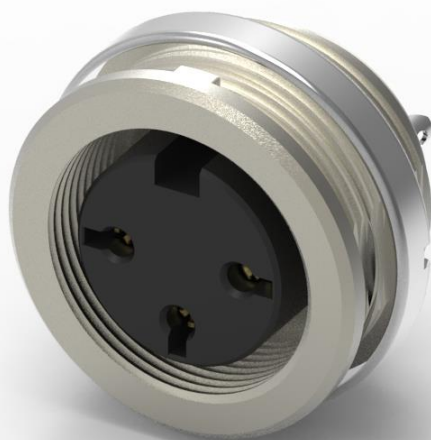


**Datasheet**

# RS PRO DIN JACK SCREW LOCK

Stock No: 2100257 , 2100249 , 2100255 , 2100252 , 2100258 ,  
2100260



## Technical Specifications:

To include attributes e.g. height, width, depth, color etc.

Connector type:	Jack
Mounting type:	Panel
Female	IP40
Contact Gender:	Female
Number of Contact:	3~8

# Dimensional line drawings

## See examples on Brandzone

1. MATERIAL  
 1-1 CONTACT - NICKEL SILVER/PAV - COLOUR BLACK  
 1-2 CONTACT - PHOSPHOR BRONZE  
 1-3 SPRING - CR-MANG  
 1-4 SHIELD - BRASS  
 1-5 SHIELD - BRASS

2. FINISH  
 2-1 CONTACT - GOLD PLATE MICRO INCHES MIN.  
 2-2 "10" NICKEL PLATED  
 2-3 SHIELD - STAINLESS STEEL

3. ELECTRICAL INSULATION  
 3-1 THERMOSETTING RESIN  
 3-2 PLASTIC POLYMER / 250V  
 3-3 POLYESTER

4. DIMENSIONS  
 4-1 DIMENSIONS - INCHES-DECIMAL

VE-1605W		VE-1605W		VE-1605W		VE-1605W		VE-1605W		VE-1605W		VE-1605W		VE-1605W		VE-1605W		VE-1605W	
DIMENSIONAL LINE DRAWING OF VE-1605W FEMALE CONNECTOR AS TABLE* DIM PART NO. REV. 04																			

