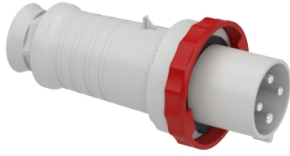


# Product datasheet

Specifications



## PratiKa wander plug - straight - 63 A - 3P + E - 380...415 V AC - IP67



81382

### Main

Range	Mureva
Product Or Component Type	Wander plug
Device Short Name	Mureva plug
Plug, Socket Category	Low voltage
Poles Description	3P + E
Network Type	AC
Outlet Standard	Industrial

### Complementary

Plug, Socket, Control Station Shape	Straight
[In] Rated Current	63 A
[Ue] Rated Operational Voltage	380...415 V
Network Frequency	50/60 Hz
Ground Lug Clockwise Position	6 h
Plug, Socket Material	Housing: self-extinguishing engineering polymer
Contacts Material	Pins: nickel plated brass
Connections - Terminals	Captive screws
Cable Cross Section	6...25 mm <sup>2</sup>
Cable Outer Diameter	17...31 mm
Cable Entry	Cable gland
Thread Type	Pg 36
Net Weight	0.736 kg
Height	265 mm
Width	110 mm
Depth	110 mm
Colour	Grey (RAL 7035)
Voltage Colour	Red

### Environment

Standards	IEC 60309-2 IEC 60309-1
Ip Degree Of Protection	IP67 conforming to IEC 60529

<b>Ik Degree Of Protection</b>	IK08 conforming to EN 62262
<b>Fire Resistance</b>	850 °C conforming to IEC 60695-2-11
<b>Relative Humidity</b>	50 % at 40 °C 70 % at 30 °C 90 % at 20 °C
<b>Operating Altitude</b>	2000 m
<b>Ambient Air Temperature For Operation</b>	35 °C ( 86400 s ) -25...40 °C

## Packing Units

<b>Unit Type Of Package 1</b>	PCE
<b>Number Of Units In Package 1</b>	1
<b>Package 1 Height</b>	11.000 cm
<b>Package 1 Width</b>	11.000 cm
<b>Package 1 Length</b>	25.000 cm
<b>Package 1 Weight</b>	744.000 g
<b>Unit Type Of Package 2</b>	S03
<b>Number Of Units In Package 2</b>	10
<b>Package 2 Height</b>	30.000 cm
<b>Package 2 Width</b>	30.000 cm
<b>Package 2 Length</b>	40.000 cm
<b>Package 2 Weight</b>	7.925 kg
<b>Unit Type Of Package 3</b>	P12
<b>Number Of Units In Package 3</b>	80
<b>Package 3 Height</b>	45.000 cm
<b>Package 3 Width</b>	80.000 cm
<b>Package 3 Length</b>	120.000 cm
<b>Package 3 Weight</b>	75.384 kg

## Contractual warranty

<b>Warranty</b>	18 months
-----------------	-----------

## Sustainability

**Green Premium™ label** is Schneider Electric's commitment to delivering products with best-in-class environmental performance. Green Premium promises compliance with the latest regulations, transparency on environmental impacts, as well as circular and low-CO<sub>2</sub> products.

**Guide to assessing product sustainability** is a white paper that clarifies global eco-label standards and how to interpret environmental declarations.

[Learn more about Green Premium >](#)

[Guide to assess a product's sustainability >](#)



Transparency RoHS/REACH

## Well-being performance

Mercury Free

Rohs Exemption Information Yes

## Certifications & Standards

Reach Regulation [REACH Declaration](#)

Eu Rohs Directive Compliant with Exemptions

China Rohs Regulation [China RoHS declaration](#)  
Product out of China RoHS scope. Substance declaration for your information

Environmental Disclosure [Product Environmental Profile](#)

Circularity Profile No need of specific recycling operations