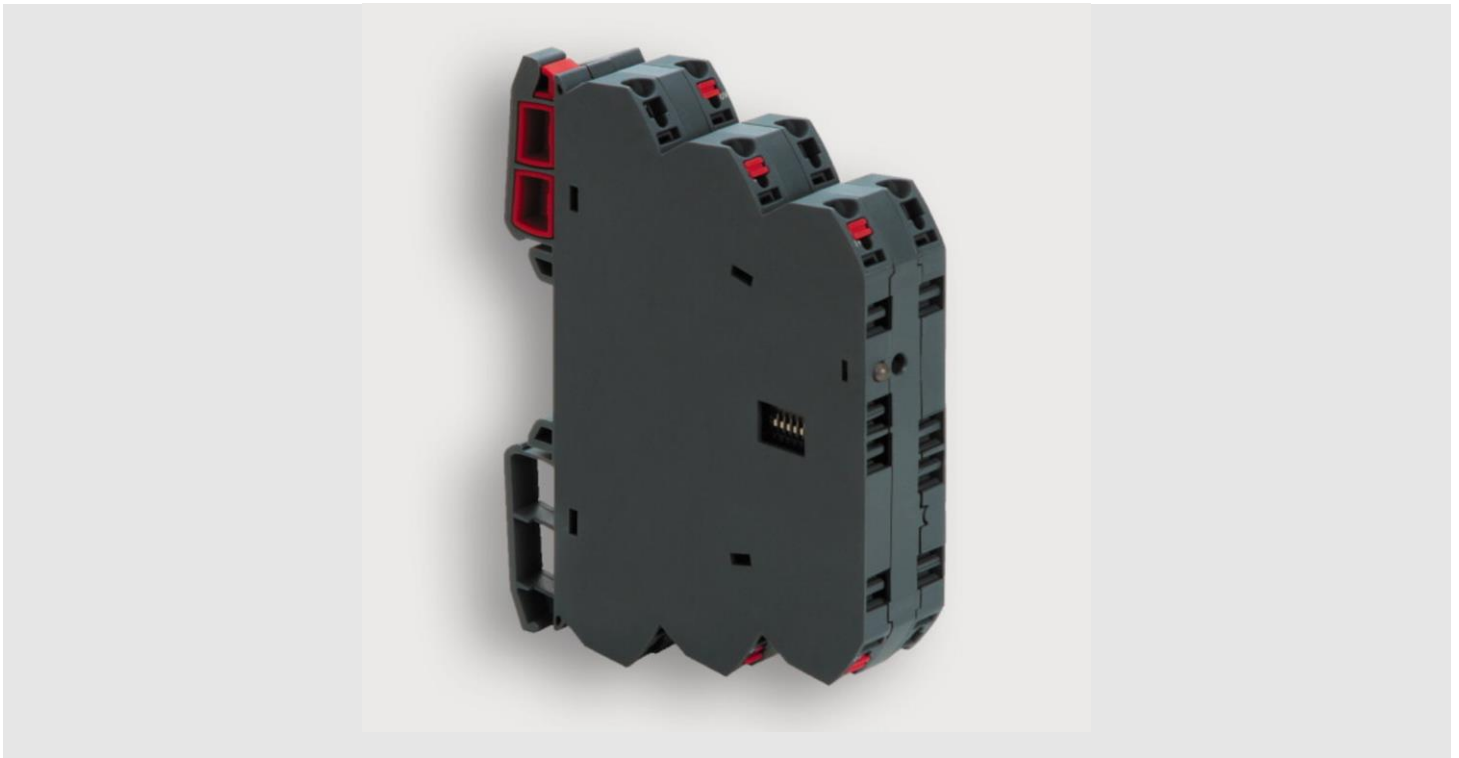


Datasheet

RS PRO Signal Converter

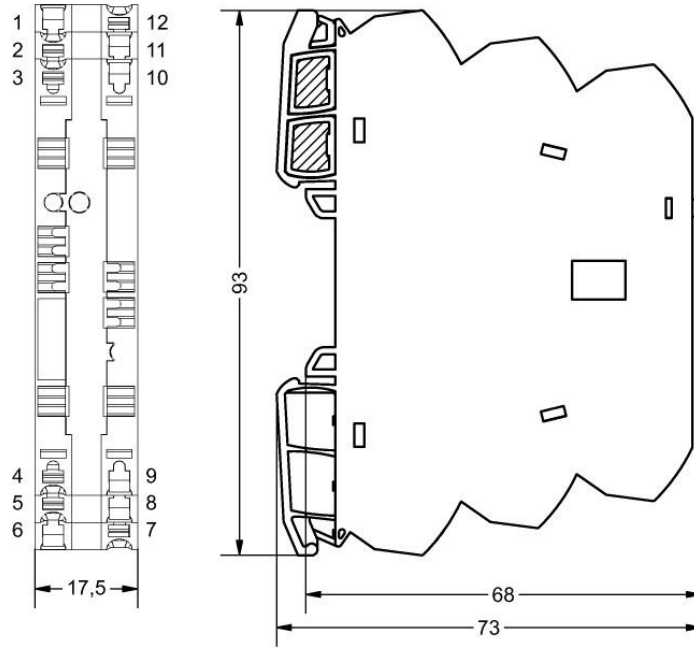
Stock No: 192-3397

LCIS analogue/ analogue converter

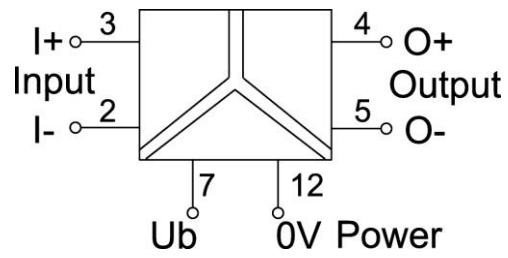
**Specifications**

Type	LCIS-WP-WAA-1510-175-PI
Input	0–10 V / 0–20 mA / 4–20 mA
Output	0–10 V / 0–20 mA / 4–20 mA
Insulation	4 kV, 3-way isolation, Wide range input
Mounting Type	DIN rail mountable TS35 (EN 60715)
Connection type	Push-In
IP Rating	IP20
Housing Material	PA 6.6 (UL 94 V-0, NFF I2, F2)

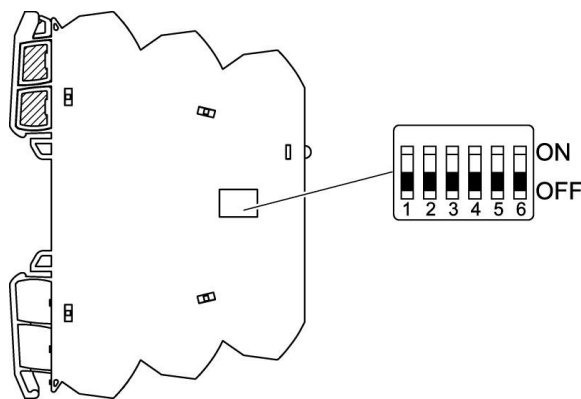
Dimensions



PIN assignment



Switch position



Delivery status: 0 (OFF)

Range adjustment

S1	Input
●→Switch On	1 2 3 4
0–10V*	●
0–20mA	●
4–20mA	● ●

S1	Output
●→Switch On	5 6
0–10V*	●
0–20mA	●
4–20mA	● ●

Range is set if all switches are OFF. A-0-M switch to A.
*Default

Technical Data

Input	
Input signal	0–10 V, 0–20 mA, 4–20 mA, adjustable via DIP switch S1
Galvanic isolation I/O	3-way isolation
Zero /Span	Production comparison
Input resistance	>300 k Ω @ 0–10 V, <100 Ω @ 0–20 mA, 4–20 mA

Output	
Output signal	0–10 V, 0–20 mA, 4–20 mA adjustable via switch
Output voltage limit	min 0 V max 10.8 V for all output ranges with nominal upper limit 10 V
Output current limit	min. 0 mA for all output ranges with nominal lower limit 0 mA min. 3.6 mA or all output ranges 4 – 20 mA max. 21.6 mA for all output ranges with nominal upper limit 20 mA
Max. load impedance at I-output	500 Ω @ 0–20 mA, 4–20 mA
Min. load impedance at U-output	2 k Ω @ 0–10 V
Load deviation	at U-output max. 5 mV @ 2 k Ω
Output voltage	< 18 V @ 0–20 mA, 4–20 mA
Output current	max. 5 mA @ 0–10 V
Residual ripple	<20 mV _{eff}

Operating data	
Accuracy	0.1 % FSR @ 23 °C
Linearity error	0.05 % FSR
Rise time (10 - 90%)	6 ms
Build-up time (Accuracy 1%)	17 ms
Critical frequency	30 Hz @ 3 dB
Temperature coefficient	<150 ppm / K FSR

General	
Rated voltage U _N	AC/DC 24–240 V
Operation voltage range	AC 19.2–26.4 V / DC 18.0–31.2 V
Status indication	LED green
Input/output protection	Overvoltage, current input with PTC fuse, short circuit-proof output
Rise time (10 - 90%)	6 ms
Insulation voltage input / output	4.0 kV _{eff}
Housing material	PA 6.6 (UL 94 V-0, NFF I2, F2)
Color of the housing	RAL 7012 basalt grey
Mounting	DIN rail mountable TS35 (EN 60715)
Protection class	IP20
Installation position	any
Connection type	Push-In single wire 0.25 mm ² –2.5 mm ² / AWG 20–14 fine stranded wire with ferrule 0.25 mm ² –1.5 mm ² / AWG 20–16
Operation temperature range	-25 °C ... +60 °C
Storage temperature range	-40 °C ... +80 °C
Dimensions (w × h × d)	17.5×93×73 mm
Weight	0.059 kg/piece
PU	1 piece
Approvals	cULus (E135145) DNV GL
Standards	EN 60947-5-1

Failure Rate Prediction (MTBF)	
Standards	Electronic components – Reliability – Reference conditions for failure rates and stress models for conversion: EN/IEC 61709 Failure Rates of Components – Expected values: SN 29500
Failure rate at +45 °C	667 fit
Failure rate at +45 °C	1498305 h
	1 fit equals one failure per 10 ⁹ component hours The indicated temperature is the mean component ambient temperature.
Comments	The results are valid under following conditions: Automotive environment or industrial areas without extreme dust levels and harmful substances Continuous operation 8760 h per year