

Datasheet

Time Lag Glass Tube Fuse, 3.15A, 5x20mm

Stock No: 1778065

RS Pro



Specifications:

Materials

Tube (Body): Transparent glass tube. No breaking or deformation is allowed.

Two brass end caps: Made of brass of good conductivity.

Coating of brass caps: Plating the surface with nickel. If the indication is added with "S", it with "S", it needs to be plated with silver.

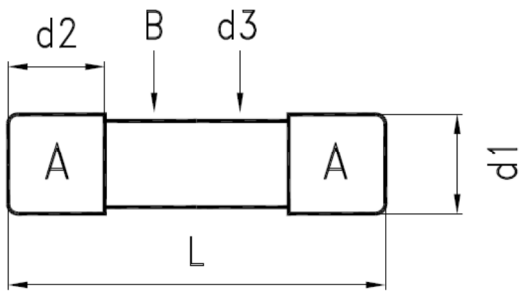
Interrupting Ratings

35 amperes or 10 In rated current ; whichever is greater at 250V AC.

Operating Temperature

-55°C to +125°C

Drawing (mm):



NO.	Part Name		Volume
A	Brass Cap	Nickel Plating	2
B	Glass Tube	Transparent Glass	1
d1	Dia. of Cap	$5.2^{+0.1}_{-0.2}$ mm	
d2	Height of Cap	5.25 ± 0.1 mm	
d3	Dia. of Ceramic	4.56 ± 0.2 mm	
L	Body of Fuse	20.00 ± 0.75 mm	

Electrical Characteristic:

Rating	150% Rating		210% Rating		275% Rating		400% Rating		1000% Rating	
	Min.	Max.	Min.	Max.	Min.	Max.	Min.	Max.	Min.	Max.
500mA~6.3A	60 min			2 min	600 ms	10 sec	150 ms	3 sec	20 ms	300 ms

Ampere Rating	Nominal Resistance Cold Ohms Range	Nominal Melting I^2t A ² Sec
3.15 A	0.0131-0.0243	74.304