

FEATURES

- Stainless steel robust construction
- Anti-vandal design
- Easy installation
- Screw terminals
- Illuminated & no light options
- 16mm – 30mm options
- IP rated
- Range of voltages

RS PRO Push Button Switches

RS Stock No.: 2489255



Image for illustration purposes only

RS Professionally Approved Products bring to you professional quality parts across all product categories. Our product range has been tested by engineers and provides a comparable quality to the leading brands without paying a premium price.

Product Description

- *High quality panel mount switches constructed from stainless steel for superior durability for both internal and external applications.*
- *Typically used for door and gate entry control, plant and machinery, control panels, escalators and moving walkways, lifts and instrument control, process handling and access equipment.*
- *Often used with panel mount indicators, panel alarms, buzzers and display screens.*

General Specifications

| | |
|------------------------------|-------------------------------------|
| Type | SW 30mm Scr Lat Pwr RG 12V |
| Switch Operation | Latching |
| Contact Configuration | 1NO1NC DPST |
| Illuminated | Yes |
| LED Voltage | 12V |
| LED Colour | Red-Green |
| Actuator Shape | Round |
| Legend | Power |
| Package Contains | 1 x Switch, 1 x Hex Nut, 1 x O-Ring |

| Material Characteristics | |
|--------------------------|-----------------|
| Case | Stainless Steel |
| Base | PBT |
| Contact | Silver alloy |
| Terminals | Screw |

Electrical Specifications

| | |
|-----------------------|--------------------|
| Voltage Rating | 250VAC |
| Terminal Type | Screw |
| Wire Range | 1.5mm ² |

| Contact Specifications | |
|------------------------|-----------------------------|
| Contact Current Rating | 5A at 250VAC |
| Contact Resistance | ≤50mΩ |
| Insulation Resistance | ≥1,000MΩ |
| Dielectric Strength | 1,780VAC |
| Total Travel | 3.0mm +/- 0.2mm |
| Electrical Life | ≥50,000 Cycles at Full Load |

Mechanical Specifications

| | |
|------------------------|------------------------------------|
| Mounting Type | Panel Mount |
| Panel Thickness | 1mm (min) to 14mm (max) |
| Panel Cut Out Diameter | 30.20mm |
| Mechanical Life | ≥1,000,000 operations |
| Actuating Force | 3-5N |
| Torque | 5-14Nm applied to rear locking nut |

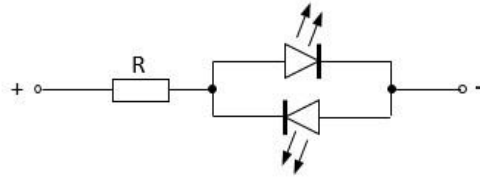
Operation Environment Specifications

| | |
|-------------------------------|-------|
| Maximum Operating Temperature | +80°C |
| Minimum Operating Temperature | -40°C |

Protection Category

| | |
|--------------------------|------|
| IP Rating | IP65 |
| Impact Protection Rating | IK10 |

DIMENSIONAL/SCHEMATIC DIAGRAMS / ILLUSTRATIONS



The LED illumination is polarity insensitive

