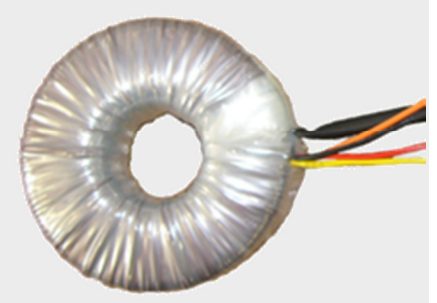


Datasheet

Toroidal Transformers – twin primary, open type

RS Pro

Standard toroidal transformers designed according to the following specifications.



Specifications

- High quality safety and isolating transformers designed for use in control circuits and general applications
- High quality, low loss and low noise toroidal core
- Environmentally friendly, low energy dissipation
- Dual primary windings for parallel or serial connection.
- High efficiency, low regulation design
- Dual secondary windings
- Detailed product specification on permanent label
- Designed and manufactured to conform to BS EN 61558-1 and UL506.
- 100% electrical and flash tested
- Mounting kit included: 2 rubber washers, 1 metal disc, bolt and nut

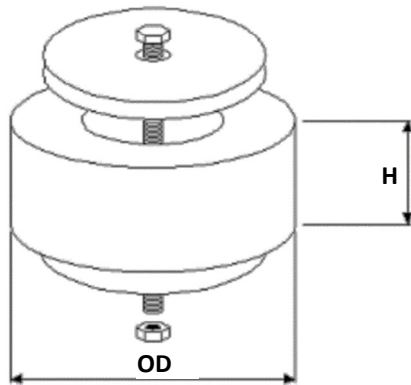
Power: 100 – 3000 VA
 Frequency: 50/60 Hz
 Primary: 2 x 115 VAC, +/- 10%
 Secondary: 2x (6, 9, 12, 15, 18, 24, 30, 40, 45, 50, 55, 115) VAC
 Isolation: 4 kV RMS
 Temp. rise: 55°C
 Temp. class: A (105°)
 According to: BS/EN61558-1, UL506 AS/NZS 61558.1 and BS/EN 61558-2-6, AS/NZS 61558.2.6 or BS/EN 61558-2-4 AS/NZS 61558.2.4 IEC 61558-1, IEC 61558-2-6 or IEC 61558-2-4



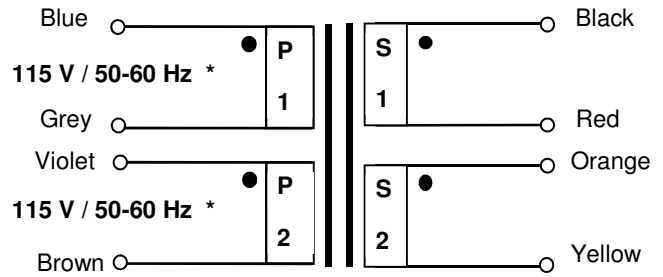
Ordering details:

RS Stock number	Power VA	Specification	No-load voltage	According to
1176051	100	2 Output Toroidal Transformer, 100VA 12V	2 x 13.7	IEC61558-2-6 / EN61558-2-6
1176061	250	2 Output Toroidal Transformer, 250VA 24V	2 x 25.8	IEC61558-2-6 / EN61558-2-6
1176066	300	2 Output Toroidal Transformer, 300VA, 50V	2 x 53.6	IEC61558-2-4 / EN61558-2-4
1176068	300	2 Output Toroidal Transformer, 300VA, 115V	2 x 123	IEC61558-2-4 / EN61558-2-4
1176069	400	2 Output Toroidal Transformer, 400VA, 24V	2 x 25.8	IEC61558-2-6 / EN61558-2-6
1176070	400	2 Output Toroidal Transformer, 400VA, 55V	2 x 58.5	IEC61558-2-4 / EN61558-2-4
1176081	1000	2 Output Toroidal Transformer, 1000VA, 55V	2 x 57.8	IEC61558-2-4 / EN61558-2-4
1176082	1000	2 Output Toroidal Transform, 1000VA, 115V	2 x 120.8	IEC61558-2-4 / EN61558-2-4
1176083	1500	2 Output Toroidal Transform, 1.5kVA, 115V	2 x 120.8	IEC61558-2-4 / EN61558-2-4
1176084	2000	2 Output Toroidal Transformer, 2kVA, 115V	2 x 123.3	IEC61558-2-4 / EN61558-2-4
1176085	3000	2 Output Toroidal Transformer, 3kVA, 115V	2 x 119.8	IEC61558-2-4 / EN61558-2-4

Dimensions:



Schematic/connections:



Power [VA]	Secondary [V]	Overall Size OD x ID x H [mm]	Weight [kg]
100	2x (9, 12, 15, 18, 24, 55, 115)	90 x 37 x 45	1.10
200	2x (12, 15, 18, 24, 55, 115)	115 x 40 x 48	1.90
250	2x (24, 30, 40, 45, 50, 55, 115)	115 x 40 x 54	2.40
300	2x (24, 30, 40, 45, 50, 55, 115)	117 x 40 x 60	2.70
400	2x (24, 30, 40, 45, 50, 55, 115)	130 x 40 x 56	3.35
1000	2x (24, 30, 45, 50, 55, 115)	175 x 70 x 85	8.40
1500	2x (24, 45, 50, 55, 115)	200 x 70 x 90	9.80
2000	2x (24, 50, 55, 115)	238 x 90 x 75	13.00
3000	2x (24, 50, 55, 115)	240 x 85 x 105	20.50

*) The two primary windings have to be connected either in series or in parallel.

Subject to errors and changes in data sheets.