



APPLICATION GUIDE
Pieno Button with Key Reset

CAT. NO.
E8231KPB

Pieno

Thank you for choosing **Schneider Electric** Pieno's electronic accessories. To ensure proper application of our products, please read through the following information before installation and use.

This application guide applies to the following products.



Cat.no.

E8231KPB

Description

Panic Button with Key Reset

SPECIFICATIONS

Rated Voltage : 24V DC

Rated Current : 3A

Dimension : 87mm x 87mm

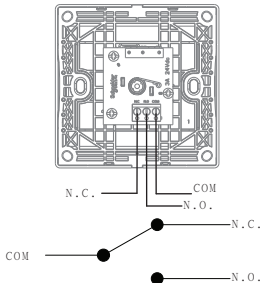
Mounting Centre : 60.3 mm

IMPORTANT NOTE

1. The products must be installed by qualified electricians.
2. Please check your local wiring regulations before installation.
3. Safekeeping the faceplate to prevent damage during product installation.
4. Turn off the power supply when you clean the product. Use a soft, slightly-moistened cloth or tissue paper to wipe off the dust and dirt on the surface. Clean with much diluted detergent if necessary but avoid using corrosive chemicals.

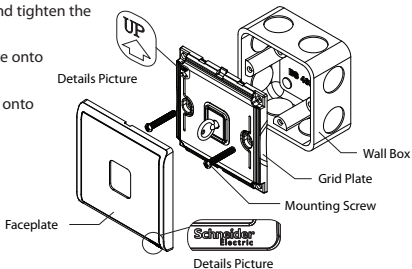
WIRING DIAGRAMS

E8231KPB



MOUNTING INSTRUCTION

1. Connect the wires to the terminals (recommend to leave 10-12mm bare metal wire) and tighten the terminal screws.
2. Screw the grid plate onto the wall box.
3. Snap the faceplate onto the grid plate.



Insert a screwdriver into the clip lock, and twist the screwdriver to remove the faceplate.

