

Datasheet

## Time Lag Ceramic Tube Fuse, 0.63-25A, 5x20mm

**Stock No: 1824080,1824100,1824115,1824130,1824154,  
1824167,1824190,1824207,1824031,1824004,  
1824018,1824022,1824025**

**RS Pro**



### Specifications:

#### Materials

Tube (Body): Non-Transparent ceramic tube fuse. No breaking or deformation is allowed.

Two brass end caps: Made of brass of good conductivity.

Coating of brass caps: Plating the surface with nickel. If the indication is added with "S", it needs to be plated with silver.

#### Interrupting Ratings

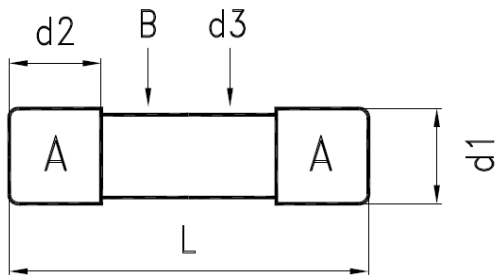
500mA~25A : 100 amperes at 500V AC

500mA~3.15A : 1500 amperes at 500V DC

4A~12A : 500 amperes at 500V DC

16A~25A : 400 amperes at 500V DC

**Operating Temperature** -55°C to +125°C

**Drawing (mm):**


NO.	Part Name		Volume
A	Brass Cap	Nickel Plating	2
B	Ceramic Tube	Non-Transparent Ceramic Tube	1
d1	Dia. of Cap	$5.2^{+0.1}_{-0.2}$	
d2	Height of Cap	$5.25 \pm 0.1$ mm	
d3	Dia. of Ceramic	$4.50 \pm 0.2$ mm	
L	Body of Fuse	$20.00 \pm 0.5$ mm	

**Electrical Characteristic:**

Rating	150% Rating		210% Rating		275% Rating		400% Rating		1000% Rating	
	Min.	Max.	Min.	Max.	Min.	Max.	Min.	Max.	Min.	Max.
500mA~800mA	60 min			30 min	250 ms	80 sec	50 ms	5 sec	5 ms	150 ms
1A~3.15A	60 min			30 min	750 ms	80 sec	95 ms	5 sec	10 ms	150 ms
4A~6.3A	60 min			30 min	750 ms	80 sec	150 ms	5 sec	10 ms	150 ms
8A~25A	30 min			30 min	750 ms	80 sec	150 ms	5 sec	10 ms	150 ms

Mark Approvals	Nominal Resistance Cold Ohms Range	Nominal Melting $I^2t$ A <sup>2</sup> Sec	Voltage Drop
			(mv)MAX
630 mA	0.0958-0.1780	1.6324	650
800 mA	0.0720-0.1338	2.7936	500
1.25 A	0.0386-0.0716	8.3700	300
1.6 A	0.0483-0.0897	9.1332	200
2 A	0.0365-0.0677	9.8964	190
2.5 A	0.0288-0.0534	20.053	180
4 A	0.0135-0.0251	78.739	100
5 A	0.0096-0.0178	97.946	100
8 A	0.0041-0.0075	209.32	100
12 A	0.0034-0.0064	578.15	100
16 A	0.0023-0.0043	1049.2	100
20 A	0.0017-0.0031	1733.0	100
25 A	0.0011-0.0021	4127.1	100

**Reference:**

Stock No	Rating amperes
1824080	630mA 500V
1824100	800mA 500V
1824115	1.25A 500V
1824130	1.6A 500V
1824154	2A 500V
1824167	2.5A 500V
1824190	4A 500V
1824207	5A 500V
1824031	10A 500V
1824004	12A 500V
1824018	16A 500V
1824022	20A 500V
1824025	25A 500V