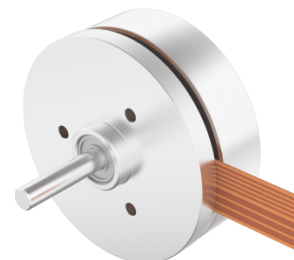


**SPECIFICATION**

Model		2163794
1	N° OF POLE	16
2	N° OF PHASE	3
3	RATED VOLTAGE	V
4	RATED SPEED	rpm
5	RATED TORQUE	Nm
6	MAX PEAK TORQUE	Nm
7	TORQUE CONSTANT	Nm/A
8	LINE TO LINE RESISTANCE	Ω
9	LINE TO LINE INDUCTANCE	mH
10	MAX PEAK CURRENT	A
11	RATED CURRENT	A
12	NO-LOAD CURRENT	mA
13	LENGTH	mm
14	ROTOR INERTIA	g-cm <sup>2</sup>
15	WEIGHT	Kg



**CONNECTION**

Pin N°	Connector	Function
1	PFC CABLE	4.5 - 24 V
2	PFC CABLE	HALL C
3	PFC CABLE	HALL A
4	PFC CABLE	HALL B
5	PFC CABLE	GND
6	PFC CABLE	PHASE W
7	PFC CABLE	PHASE V
8	PFC CABLE	PHASE U

**CHARACTERISTICS**

Item	
HALL EFFECT ANGLE	120°
SHAFT RUN OUT	0,03 mm
INSULATION CLASS	B
RADIAL PLAY (450 g LOAD)	0,02 mm
AXIAL PLAY (450 g LOAD)	0,14 mm
MAX RADIAL FORCE (10 mm FROM FRONT FLANGE)	28N
MAX AXIAL FORCE	10N
DIELECTRIC STRENGTH	500 VDC FOR ONE MINUTE
INSULATION RESISTANCE	100 Mohm min. 500 VDC