

# drylin® W hybrid bearings | Product range

Hybrid bearings with a bearing-supported plastic roller

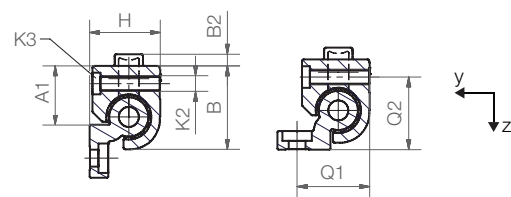
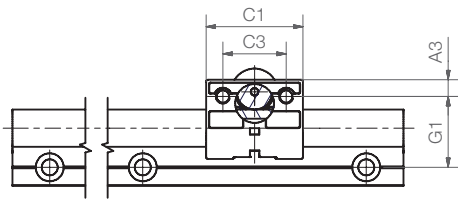


Order key

Type	Size
------	------

WJRM-01-10

Hybrid bearings	Single roller bearing	Size 10
-----------------	-----------------------	---------



Installation position 01    Installation position 02



Installation position 02 in installation size  $\varnothing 10$  when using a WJRM-02-10 hybrid bearing

## Technical data and dimensions [mm]

Part No.	Static load capacity $C_0$ [N]	Dyn. load capacity $C_z+$ at total running distance [km]			$F \cdot v$ Max. [N · m/s]
		10 [N]	100 [N]	200 [N]	
WJRM-01-10 <sup>71)</sup>	250	250	90	50	50
WJRM-01-16	400	400	140	70	80
WJRM-01-20	550	550	200	100	80

Part No.	Coefficient of friction in z-direction [ $\mu$ ]	Weight [g]	A1	A3	B	B2	C1	C3	G1	H	K2 for thread	K3 for screw	Q1	Q2
WJRM-01-10 <sup>71)</sup>	< 0.1	46	16.5	6.5	26	2.5	35	22	27	18	M6	M5	-	-
WJRM-01-16	< 0.1	131	25	9	34.5	5	48	30	33	27	M8	M6	32	28
WJRM-01-20	< 0.1	232	30	9	42.5	6	52	34	38	36	M8	M6	37	37

<sup>71)</sup> Deviating from WJRM-02-10, available with an expanded opening angle for installation position 02

Can be combined with:

