

Intelligence at Your Fingertips

Huawei IdeaHub Series



Contents

01 IdeaHub Product Overview

02 IdeaHub Highlights

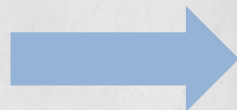
03 Sales Scenarios



What will the future office room look like?



Simple



Superb



Huawei IdeaHub, a Productivity Tool for Smart Office

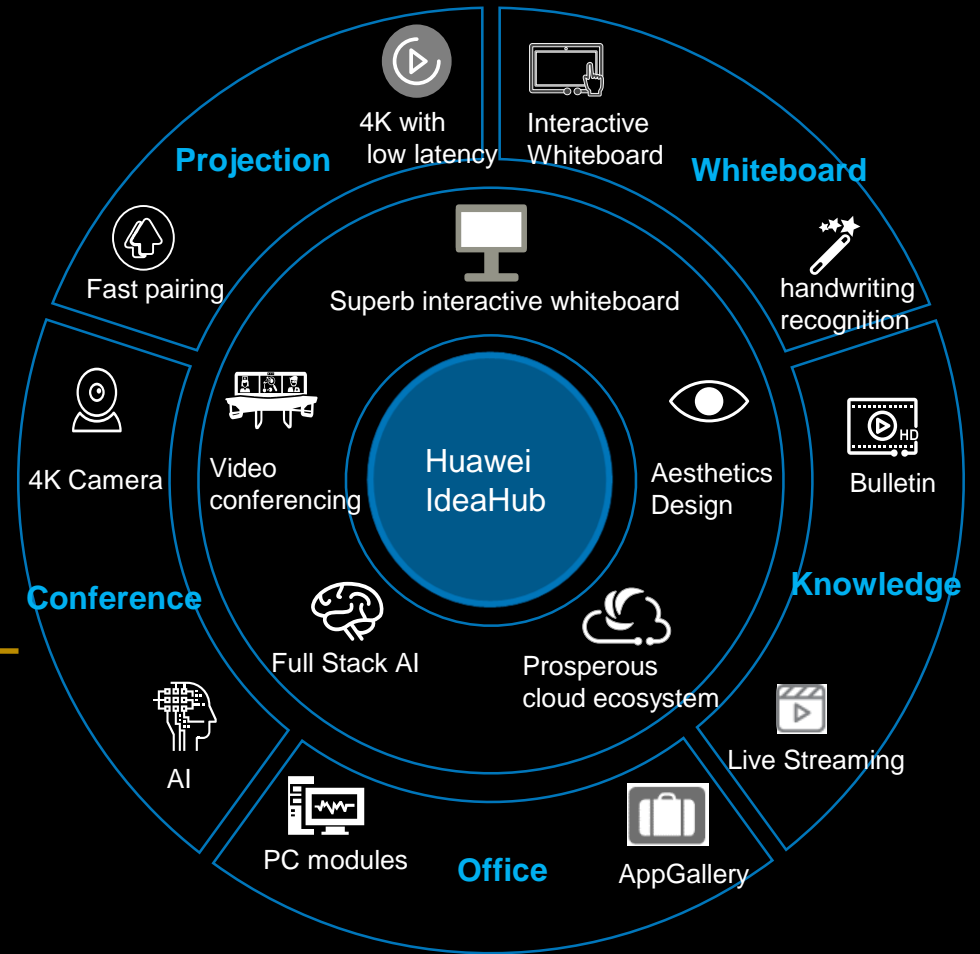


HUAWEI IdeaHub

Incorporation of 5 major capabilities

High integration

Substitution of whiteboard and projector

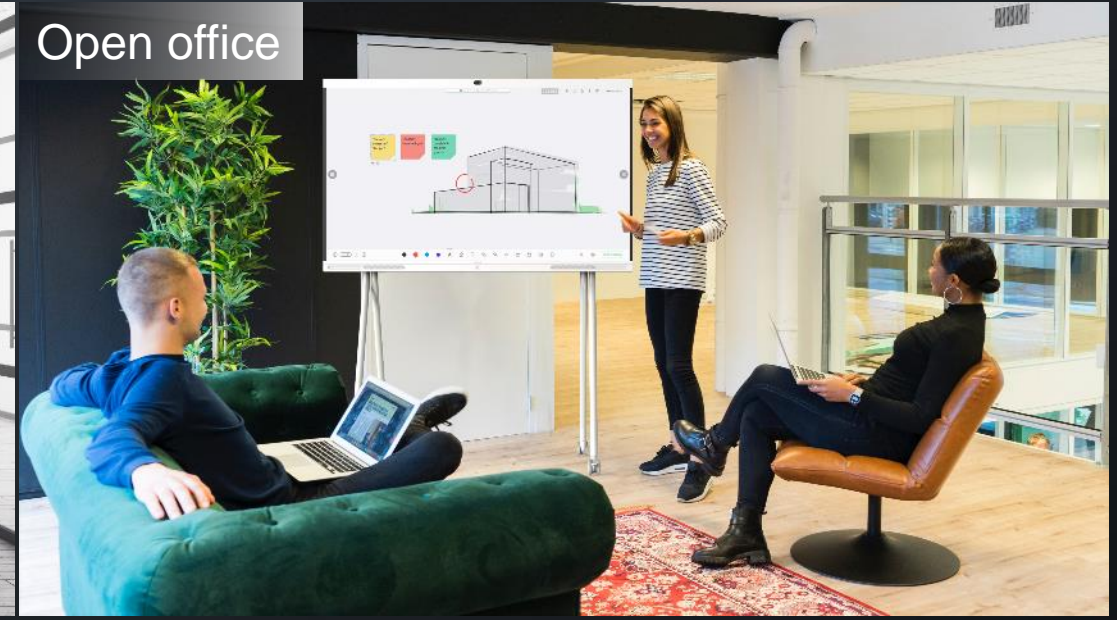


Covering all types of physical spaces and occupying the key entrance of Smart office: Paving the way for enterprises to use HUAWEI CLOUD

Meeting room



Open office



Executive office



Home office



Typical industry Scenarios of IdeaHub

Smart finance



Smart healthcare



Smart teaching



Smart education



IdeaHub Product Portfolio

IdeaHub S

1080p camera | 1080p data sharing | Auto-framing



IdeaHub Pro

4K camera | 4K data sharing | Auto-framing | Speaker tracking



Contents

01 IdeaHub Product Overview

02 IdeaHub Highlights

03 Sales Scenarios



3 Core Capabilities to Change Traditional Conference and Whiteboard

Superb Interactive Whiteboard

- Faster and smoother Content sharing
- Multiple sharing modes
- Lowest writing delay

Professional Video Conferencing

- Native and professional VC
- H.265 HD video conference, 4K experience
- SVC multi-stream, Acoustic baffle, Speaker tracking

Prosperous Cloud Ecosystem

- Large-screen Huawei appGallery
- Enterprise Bulletin Board
- Open Software and Hardware

3 Core Capabilities, faster and smoother content Sharing

60 fps

Dedicated graphics processing chip ensure
Smoother projection

4K H.265

Higher coding efficiency and 50% lower bandwidth
Higher-definition pictures

Ultra-low cursor latency

More accurate mouse-pointing



Multiple wireless projection modes, enabling desktop sharing from computers and mobile phones efficiently

Ideashare App

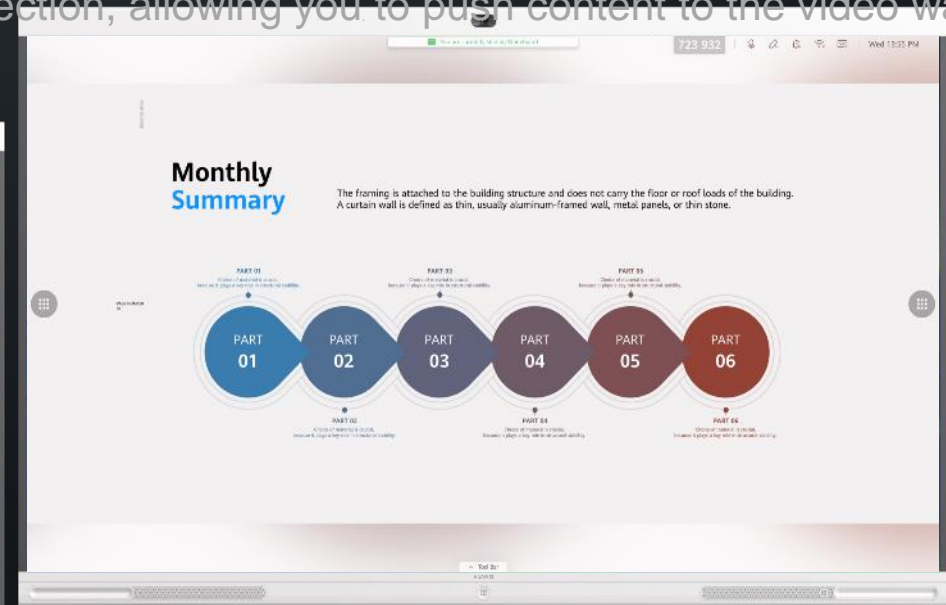
- Desktop sharing on computers and mobile devices is implemented without complex cable connections.
- A maximum of 20 wireless projection sources can be connected.

Ideashare Projector

- Supports one-click projection through the USB port of the Ideashare projector and one-click display of content on the video wall.

NFC

- Supports NFC-based one-touch projection, allowing you to push content to the video wall with one click.

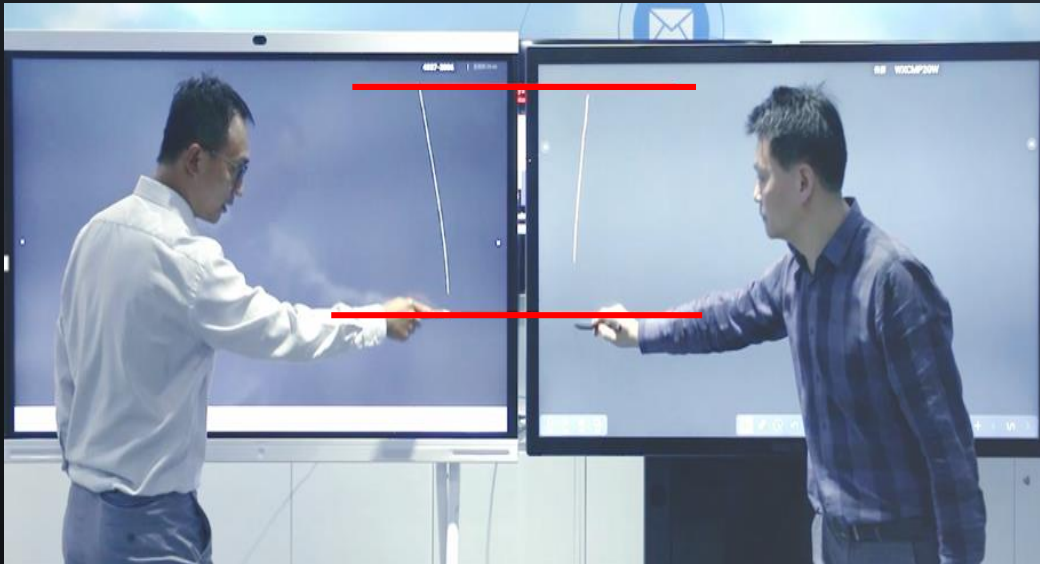


35ms Ultra-low Writing Latency

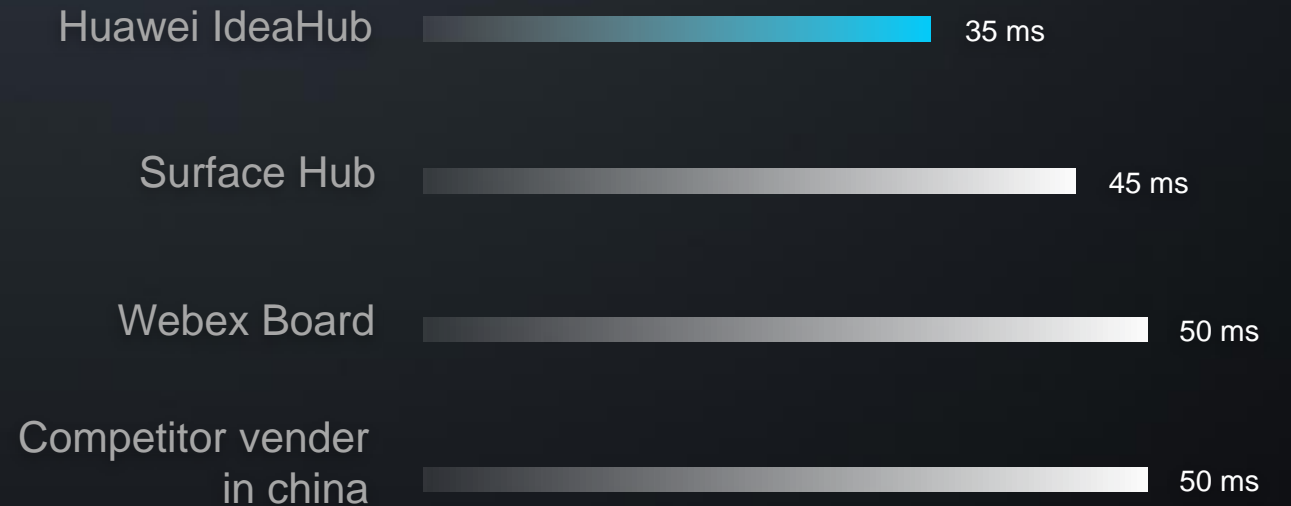
Huawei IdeaHub Pro



Others



Write Delay Comparison

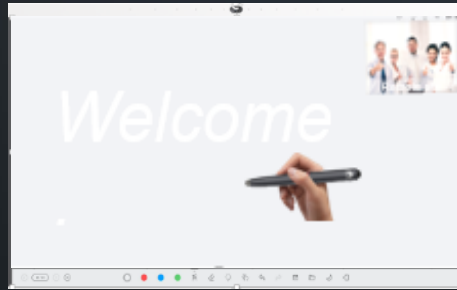


*Tested with 4K whiteboard in Huawei lab

Dedicated chip: dual-chip (4-core 1.5 GHz+4-core 1.8 GHz), dedicated graphics processing chip (4-core 1.5 GHz), and video conference codec and AI algorithm processing chip (4-core 1.8 GHz)

High accuracy: The Writing precision reaches 1 mm, and the whiteboard writing is more accurate.

Scenario-based Intelligent Control



Different writing speed presents different strokes of different thickness, to reproduce the true writing scenario.

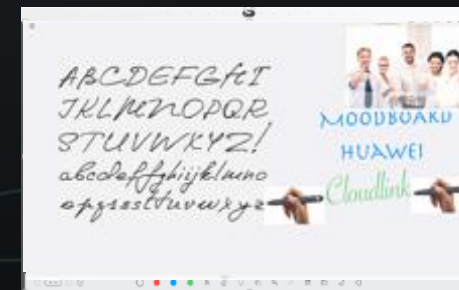


The pictures or texts can be zoomed in or zoomed out by gestures, for quick locating.



Erasing while writing makes writing/drawing more subtle and smooth.

Two authors can write simultaneously, thus promoting collaboration efficiency.



Delicate Design, professional hardware capability delivers native and super conferences experience

Integrates multiple core components, such as the 4K touchscreen display screen, 4K professional camera, microphone array, high-fidelity speaker, and high-quality aluminum alloy body, which can deliver native video conference without an external OPS



4K professional camera

Huawei

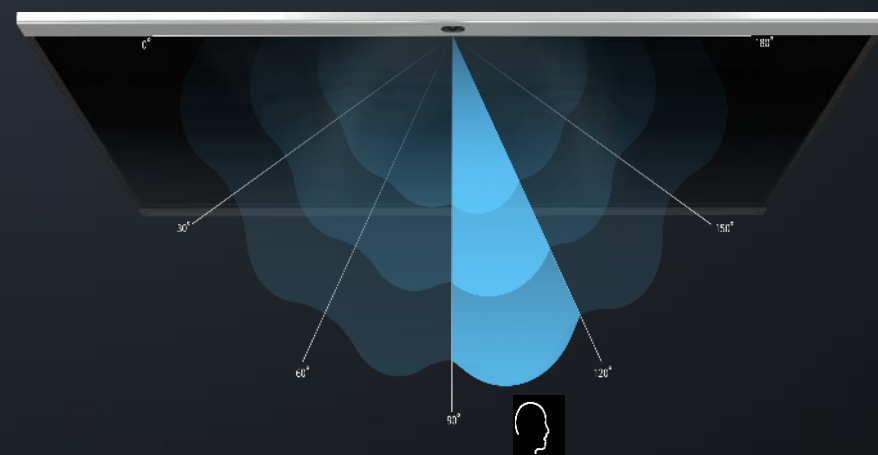
- 1800 lines 4K 30 fps video, clearer presentation
- New-generation imaging technology with low noise
- 30,000 hours of stable operation



Consumer-level camera

Industry

- 1400 lines, 4K, 10 fps video
- Common camera with much noise consumption level. No such specification statement



12 linear microphone array

Huawei

- Beamforming, 180° front coverage, 8-meter radius for audio pickup
- 0.5° precise sound source positioning
 - 20 kHz full-band audio pickup



Six microphones

Industry

- Less than 180°, 6m sound pickup
- No such specification statement
- 8 kHz audio pickup for parts of bands

Ultra-HD 4K content presentation, Low Bandwidth, High Reliability

- Latest **H.265** codec technology, supports **4K** ultra HD presentation, **4K** presentation with more clear picture and more smooth color.
- Supports 1080P HD video only with **384Kbps**, the lowest bandwidth to have HD experience in the industry.
- **SEC** super error concealment, **30% packet loss concealment** of video

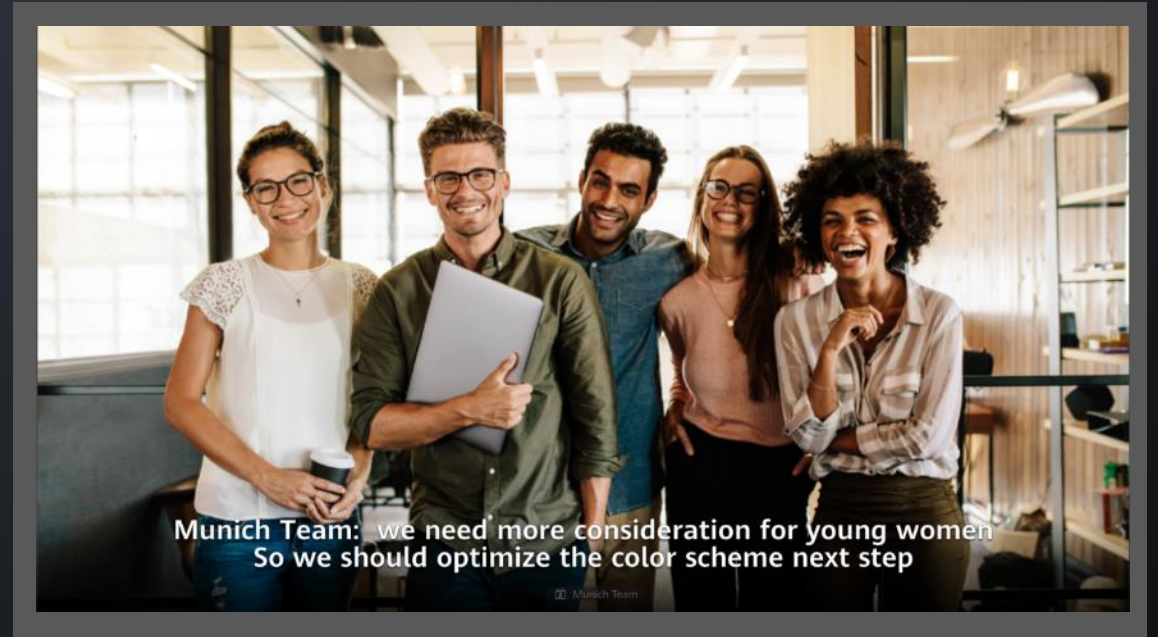


4K content provision



SVC Multi-stream Viewing Selection

- H.264 SVC technology meets the networking requirements of different bandwidths, devices, and networks.
- Flexible layout adjustment, drag and select a site to view it.





Block Noise via Acoustic Baffle Building Dedicated Conferences Space with AI

Huawei's enterprise smart display uses 12 microphone arrays, beamforming technology, and unique AI algorithms to form a sector in front of the smart display. The sector is like two invisible sound walls. The sound inside the sound walls can be picked up, and the sound outside the walls is blocked.

Large-screen dedicated app market



Built-in high-frequency applications

Provides common office applications and supports customized home page applications. Bulletin Board, Hi board, WPS



Huawei AppGallery

Provides app stores that contains abundant HD apps, covering office, news, life, and video and audio recording. Users can download their favorite apps as they like. Other board vendors do not have similar application markets.



Web application entry

For large enterprises, the management platform can push existing web applications to IdeaHub for unified application distribution and management.

Open software & hardware capabilities, building an industry application portal

Office platform expansion

Optional OPS module for Windows expansion, The Windows OS can be started preferentially.

Open SDK, enabling the ecosystem

Open SDK, allowing third-party applications to obtain hardware peripherals and audio and video encoding and decoding capabilities



Finance



Education



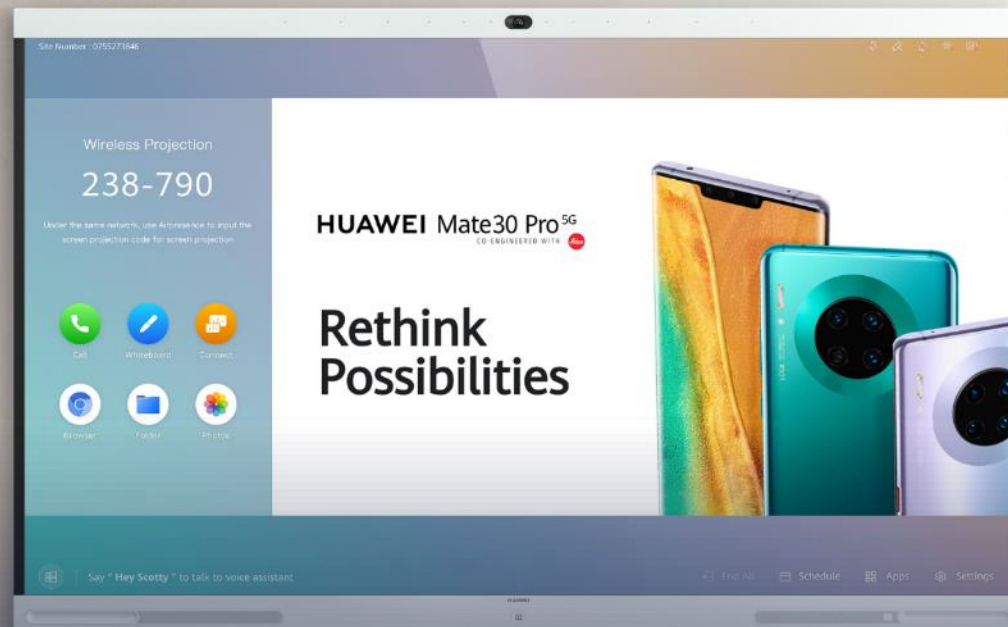
Medicine



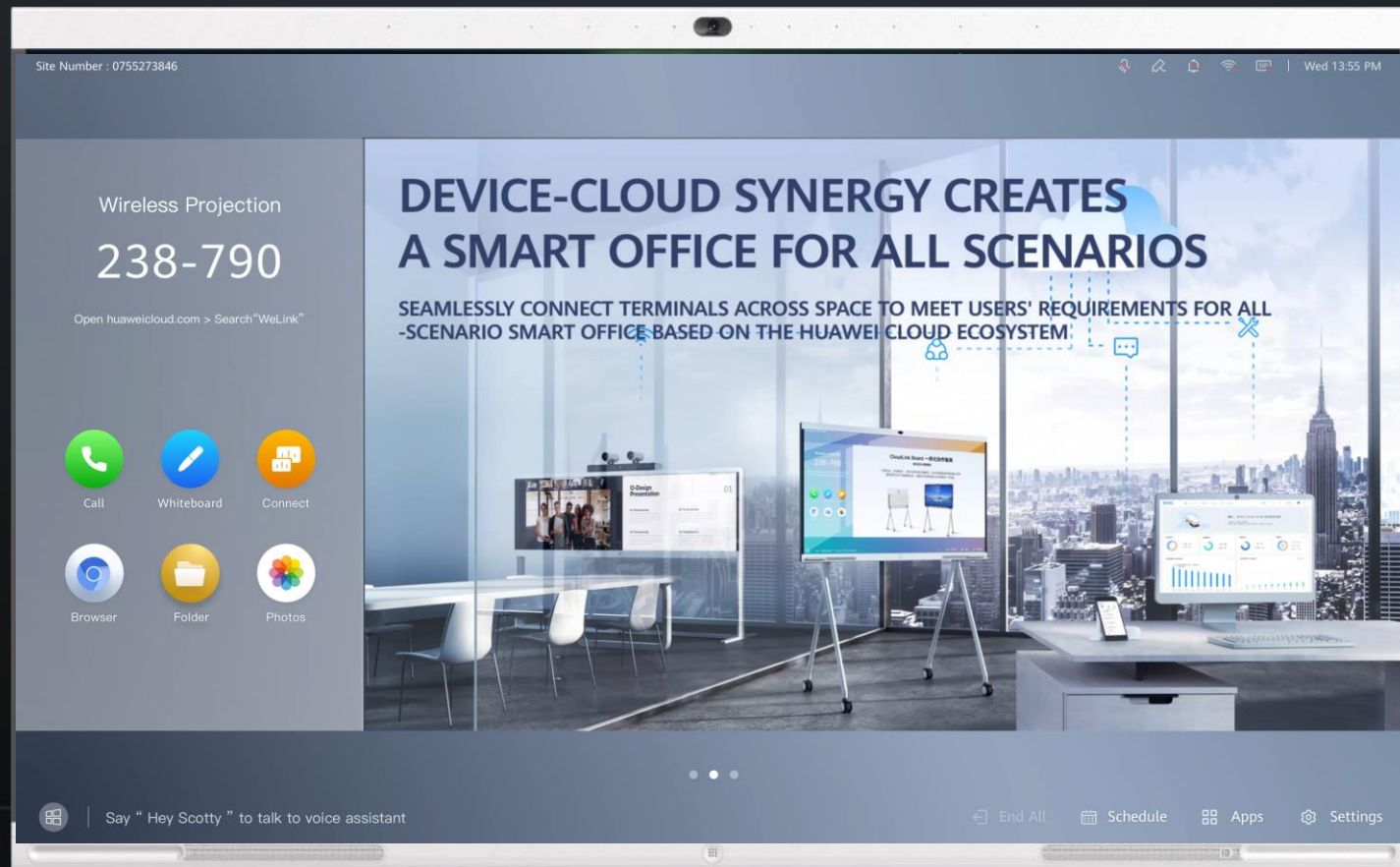
Information Window, a New Position for the Construction of Enterprise Culture

- The Bulletin Board is derived from practices of Huawei internal office system.
- It can send images and videos to IdeaHub through the platform, and is often used for real-time information release, corporate culture promotion, and product marketing within the enterprise.

Bulletin Board



Bulletin Board



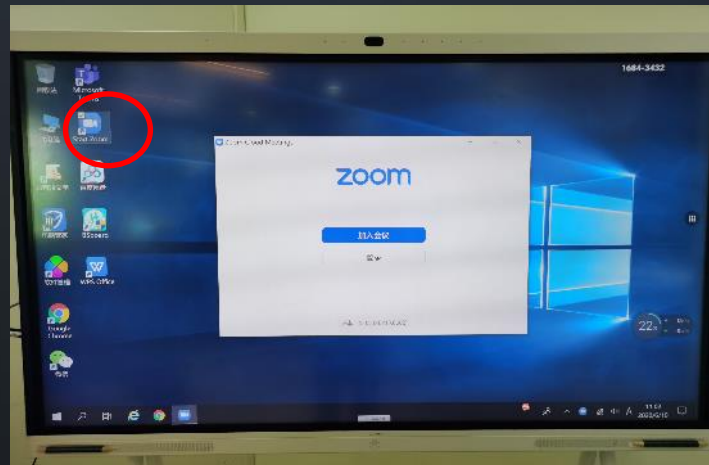
HiBoard



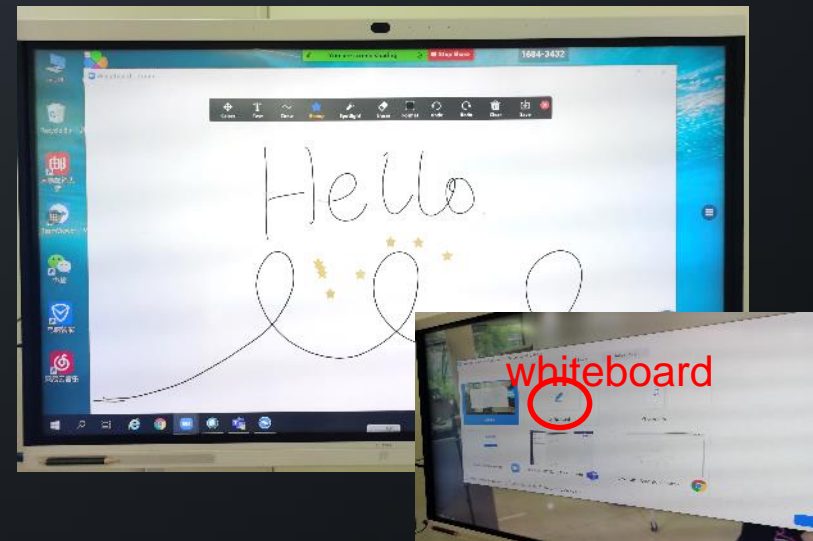
3 steps to interwork with ZOOM based on windows (OPS)



1st change to windows OS.
There is a key press lower in the lower left corner.



2nd open the ZOOM APP from Windows OS.



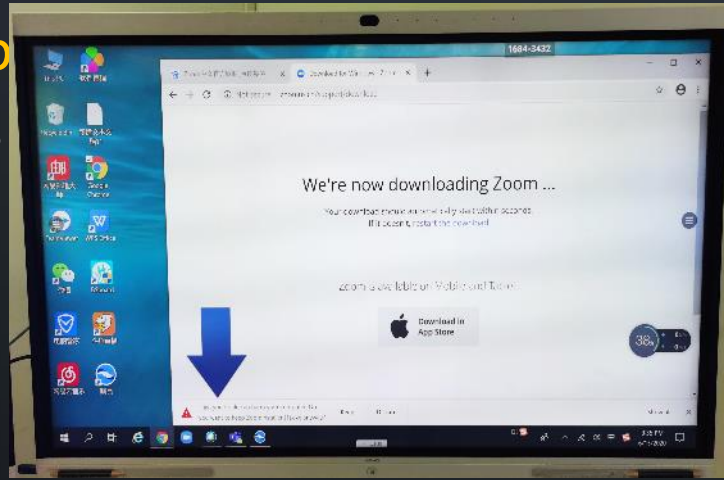
3rd Built-in functions of the ZOOM APP.

Feature	Provide by whom
Whiteboard Software	zoom
Auto-framing	IdeaHub
Voice tracking	IdeaHub
Acoustic baffle	IdeaHub
Projection	zoom

4 approach to get application

Download from web

Search the APPs from web, download with browser.



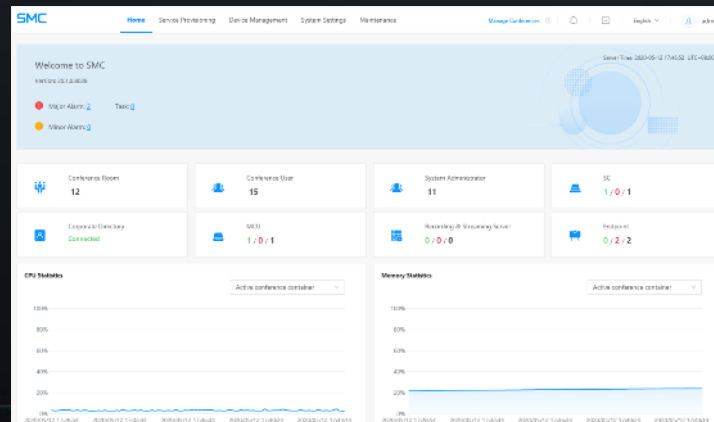
Install from USB port

Transfer the APK from USB port, install the APK in IdeaHub.



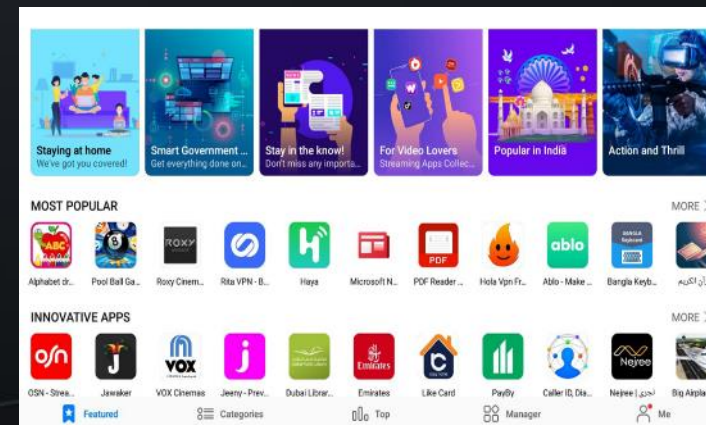
Send APK from web

configuring and provisioning APPs by using SMC from platform, one click to install APPs in every IdeaHub.



Download from App Gallery

Enter the developer mode and upload the application.



Dual-screen extension

Expand another IdeaHub with HDMI interface

Clone the screen

2 screens for the same content of the whole desktop.



Share the whiteboard

1 screen for whiteboard, 1 screen for video meeting.



Project on IdeaHub

1 screen for projection in the meeting, 1 screen for video.



Contents

01 IdeaHub Product Overview

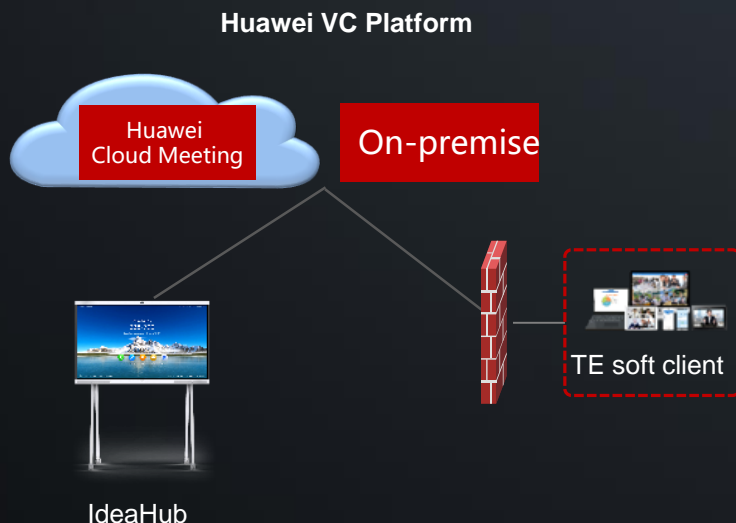
02 IdeaHub Highlights

03 Sales Scenarios



3 Sales Scenarios

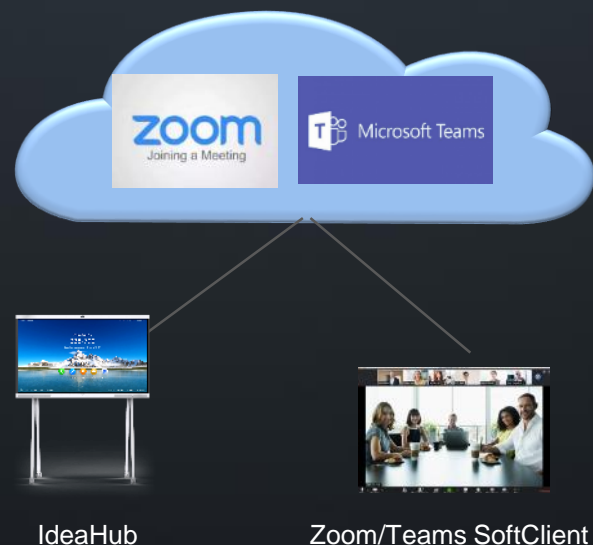
Sold with Huawei VC platform



Differentiated highlights:

- **Ultra-collaborative whiteboard:** 4K ultra-HD projection, 35 ms ultra-low latency
- **Professional 4K intelligent conference experience:** super native conference experience without external OPS, intelligent audio, 20 kHz full-band sound pickup, and speaker tracking.
- **Rich cloud ecosystem:** Open APIs and Pre-integrates with Huawei AppGallery and supports the Huawei Ideahub apps zone.

zoom and Teams public cloud



Differentiated highlights:

- **Professional hardware capabilities provide rich intelligent conference experience:** intelligent audio, 20 kHz full-band sound pickup, and speaker tracking.
- **Interconnection with third-party public clouds:** OPS windows seamlessly interconnects with Zoom and Teams
- **Rich cloud ecosystem:** Open APIs , Pre-integrates with Huawei AppGallery and supports the Huawei Ideahub apps zone.

Pure electronic whiteboard



Differentiated highlights:

- **Ultra-collaborative whiteboard:** 4K ultra-HD projection, 35 ms ultra-low latency
- **HD projection:** 4K ultra-HD projection experience, support ideaShare software, hardware, and NFC projection

IdeaHub Product Introduction Video

【Huawei IdeaHub Application Scenario Videos】

Huawei IdeaHub APAC Launching - 29 May

<https://www.youtube.com/watch?v=MEtKm-g8Zas&list=PLVv8O-597ctYtpyYkQBNYT9ZR9E7LKWHv&index=2&t=6s>

Scenario 1: Huawei IdeaHub-Efficient Collaboration Brings Out Extraordinary Ideas

<https://e.huawei.com/en/material/collaboration/21d5647029714f028885dfbcd2498282>

Scenario 2: Huawei IdeaHub-Intelligent Video Conference Improves Working Productivity

<https://e.huawei.com/en/material/collaboration/aae97d94a2ac439ca2e2d8d62de58a06>

Scenario 3: Huawei IdeaHub-Bring Intelligence Into Our Life

<https://e.huawei.com/en/material/collaboration/125dbf66cc5d40838bdc688d060008c4>



Thank You.

Copyright©2016 Huawei Technologies Co., Ltd. All Rights Reserved.

The information in this document may contain predictive statements including, without limitation, statements regarding the future financial and operating results, future product portfolio, new technology, etc. There are a number of factors that could cause actual results and developments to differ materially from those expressed or implied in the predictive statements. Therefore, such information is provided for reference purpose only and constitutes neither an offer nor an acceptance. Huawei may change the information at any time without notice.

Specification of IdeaHub Pro



Size: 65", 86"

System: CPU: dual-chip 4-core @1.5G + 4-core @1.8G

RAM: 12 GB flash: 64 GB AI computing power: 4 TB FLOPS

Screen: 65"/E-LED, 86"/D-LED; Resolution: 4K; Writing precision: ±1 mm

Camera: built-in 4K30 camera, automatic voice tracking, AutoFrame;

Maximum wide angle: 80°; Zoom multiple: 2x digital zoom

Built-in MIC: 12+1 microphone array, 8m sound pickup, 180° front coverage, supporting external microphones

Dual-stream capability: 1080p 30fps+ 1080p 30fps (4K8fps), data conference: 4K 8 fps

Network adaptability: H.265:1080p 30 fps@384 kbit/s; H.264:1080p 30fps@512Kbps;

30% packet loss concealment

Video interface: 4 inputs and 2 outputs

Audio interface: 5 inputs and 3 outputs

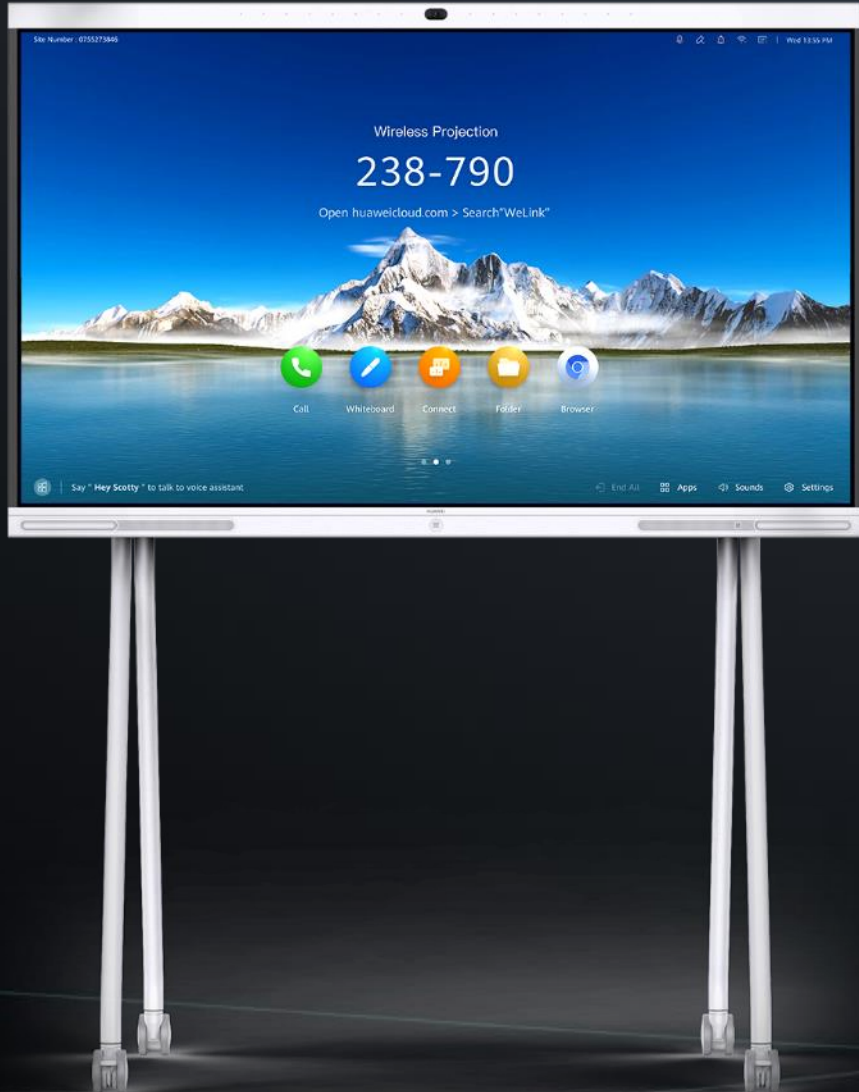
Other interfaces: 2xUSB 3.0 A interface, 1xUSB 2.0 B interface, 1xRJ45 (10/100/1000M LAN), and 1xRJ45 (connecting to the Touch)

Optional peripherals: floor-mount bracket (65-inch only), wall-mount bracket (86-inch standard 65-inch only), IdeaShare, and CloudLink Touch

Highlights:

- The writing delay is 35 ms, which is the lowest in the industry.
- Wired/wireless fast projection, 1080p 60 fps, clearer and smoother
- H.265 codec capability, native hardware codec conference capability, 1080p 30 fps+4K;
- Intelligent portrait tracking, automatically displaying close-up images of the speaker;
- Beam pickup and intelligent environment noise suppression, delivering clearer audio experience;
- Intelligent sound screen, automatically filtering out sounds outside the magic wall in noisy environments
- Built-in Huawei AppGallery smart screen area, providing massive office, news, life, and audio-visual applications

Specification of IdeaHub S



Size: 65", 86"

System: CPU: dual-chip 4-core @1.5G + 4-core @1.8G

RAM: 12 GB flash; 64 GB AI computing power: 4 TB FLOPS

Screen: 65"/E-LED, 86"/D-LED; Resolution: 4K; Writing precision: ±1 mm

Camera: built-in 1080p30 camera, AutoFrame intelligent optimal angle of view; Maximum wide angle: 80°; Zoom multiple: 2x digital zoom

Built-in MIC: 12+1 microphone array, 8 m sound pickup, 180° front coverage, supporting external microphones

Dual-stream capability: 1080p 30 fps+1080p 30 fps; data conference: 1080p 30 fps

Network adaptability: H.265:1080p 30 fps@384 kbit/s; H.264:1080p 30fps@512Kbps; 30% packet loss concealment

Video interface: 4 inputs and 2 outputs

Audio interface: 5 inputs and 3 outputs

Other interfaces: 2xUSB 3.0 A interface, 1xUSB 2.0 B interface, 1xRJ45 (10/100/1000M LAN), and 1xRJ45 (connecting to the Touch)

Optional peripherals: floor-mount bracket (65-inch only), wall-mount bracket (86-inch standard 65-inch only), IdeaShare, and CloudLink Touch

Highlights:

- The writing delay is 35 ms, which is the lowest in the industry.
- Wired/wireless fast projection, 1080p 60 fps, clearer and smoother
- H.265 codec capability, native hardware codec conference capability, and 1080p 30 fps dual-stream;
- Beam pickup and intelligent environment noise suppression, delivering clearer audio experience;
- Intelligent sound screen, automatically filtering out sounds outside the magic wall in noisy environments
- Built-in Huawei AppGallery smart screen area, providing massive office, news, life, and audio-visual applications