

Potaro Series Model P02 -1706 sf

inspired by the relatively small but spectacular pOtarO river

The P02 is one of the three budget range “Potaro” models. This compact single family two storied 1706sf unit is designed to sit on a traditional rectangular 5000sf house lot.

Features include:-

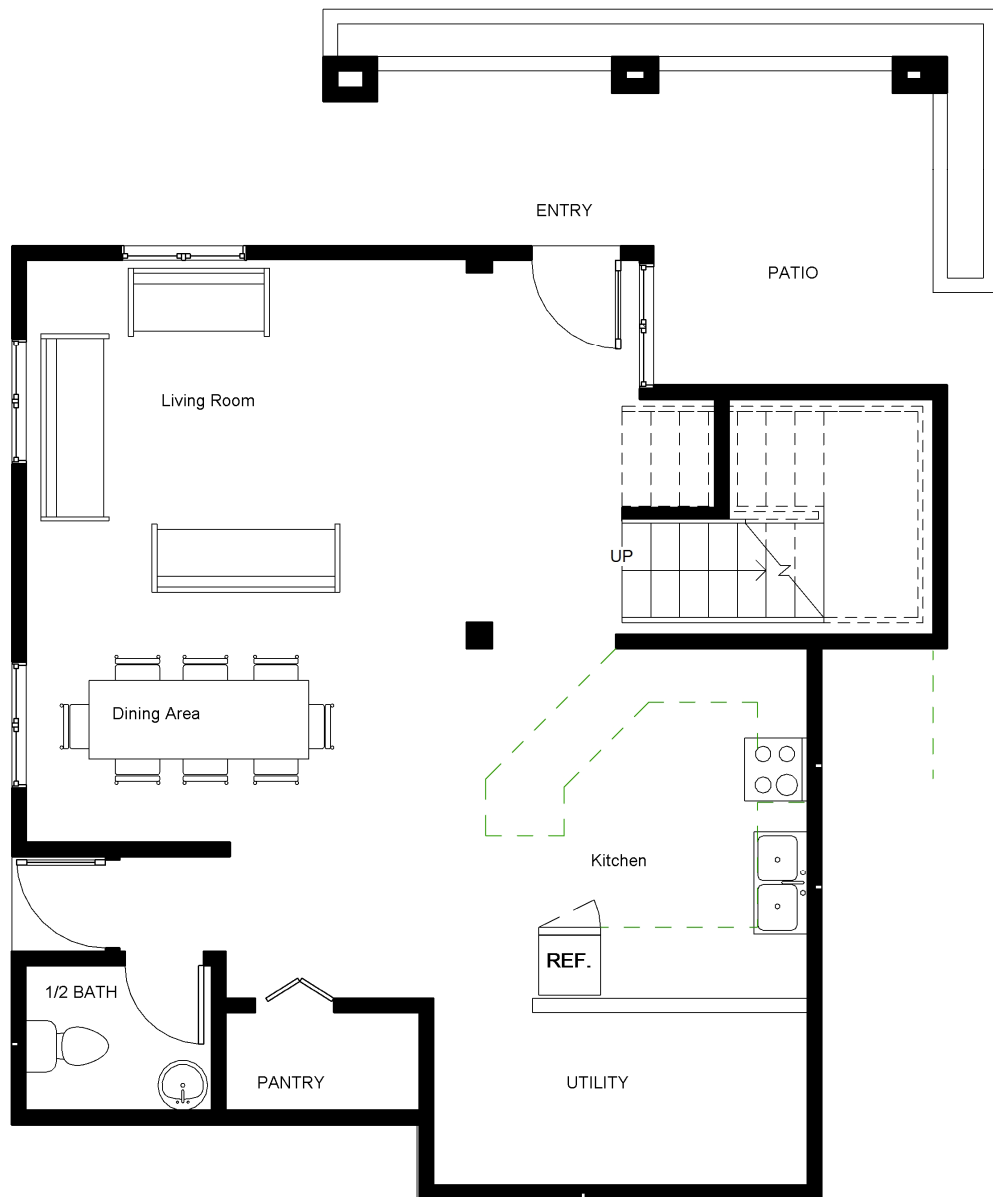
- 763sf ground floor
- 943sf upper floor
- 3 bedrooms
- A family room
- A private upper balcony
- 2 full baths
- 1 half bath
- Living room
- Kitchen,
- Dining area,
- Pantry and laundry room

Material selections include:-

- External Walls: - 6” Plastered and painted block-walls
- Roof:- Pre-painted ribbed metal sheeting .
- Windows:- “ Aluminum framed casement windows



Lower Floor Plan



Upper Floor Plan

