

## Potaro Series Model P03 - 3000 sf

The P03 is one of the three budget range “Potaro” models. This compact model stacks two independent apartments on a traditional 5000sf house lot.

Each apartment contain:-

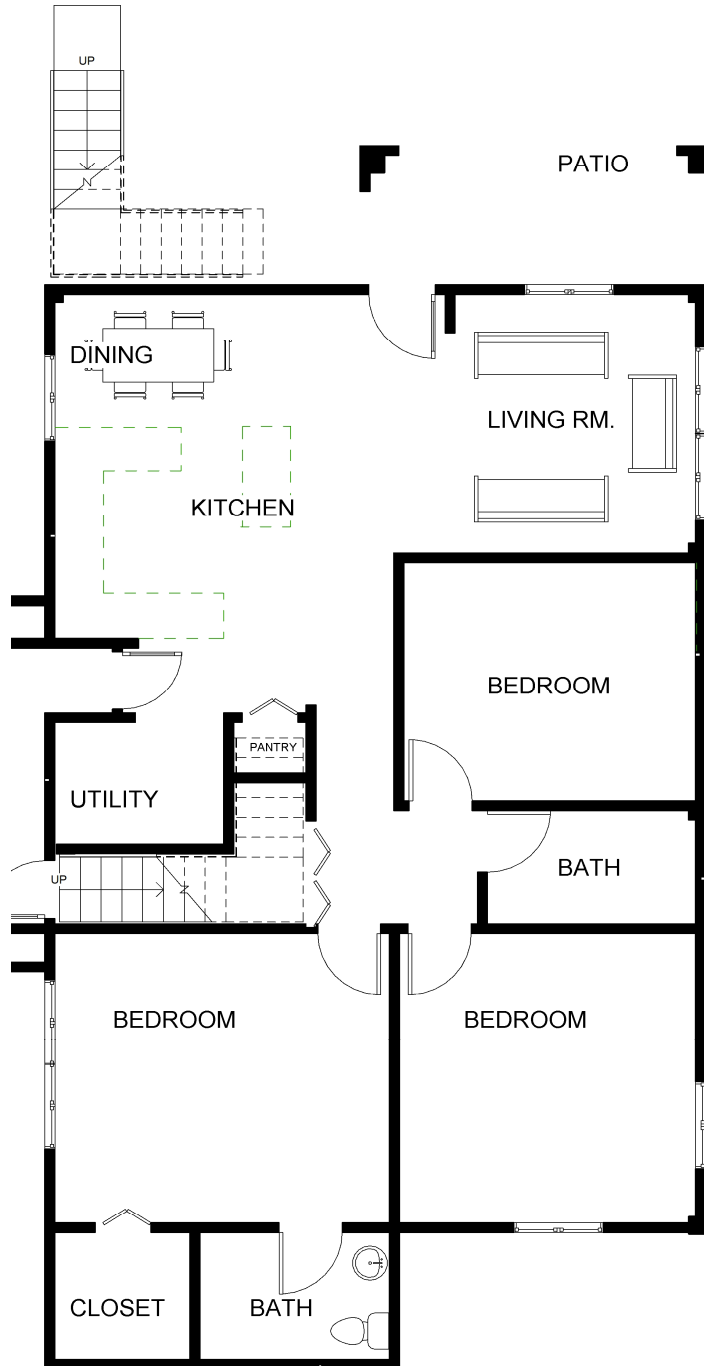
- 1500sf of enclosed space
- 3 bedrooms
- 2 full baths
- living room
- kitchen,
- dining area,
- pantry and laundry room

Material selections include:-

- External Walls: - 6” Plastered and painted block-walls
- Roof: - Pre-painted ribbed metal sheeting .
- Windows: Aluminum framed casement windows
- Floor Finishes: - A combination of thru body porcelain tiles and laminate timber flooring.



# Lower Floor Plan



# Upper Floor Plan

