

Model R01 - Rupununi Series - 4058 sf

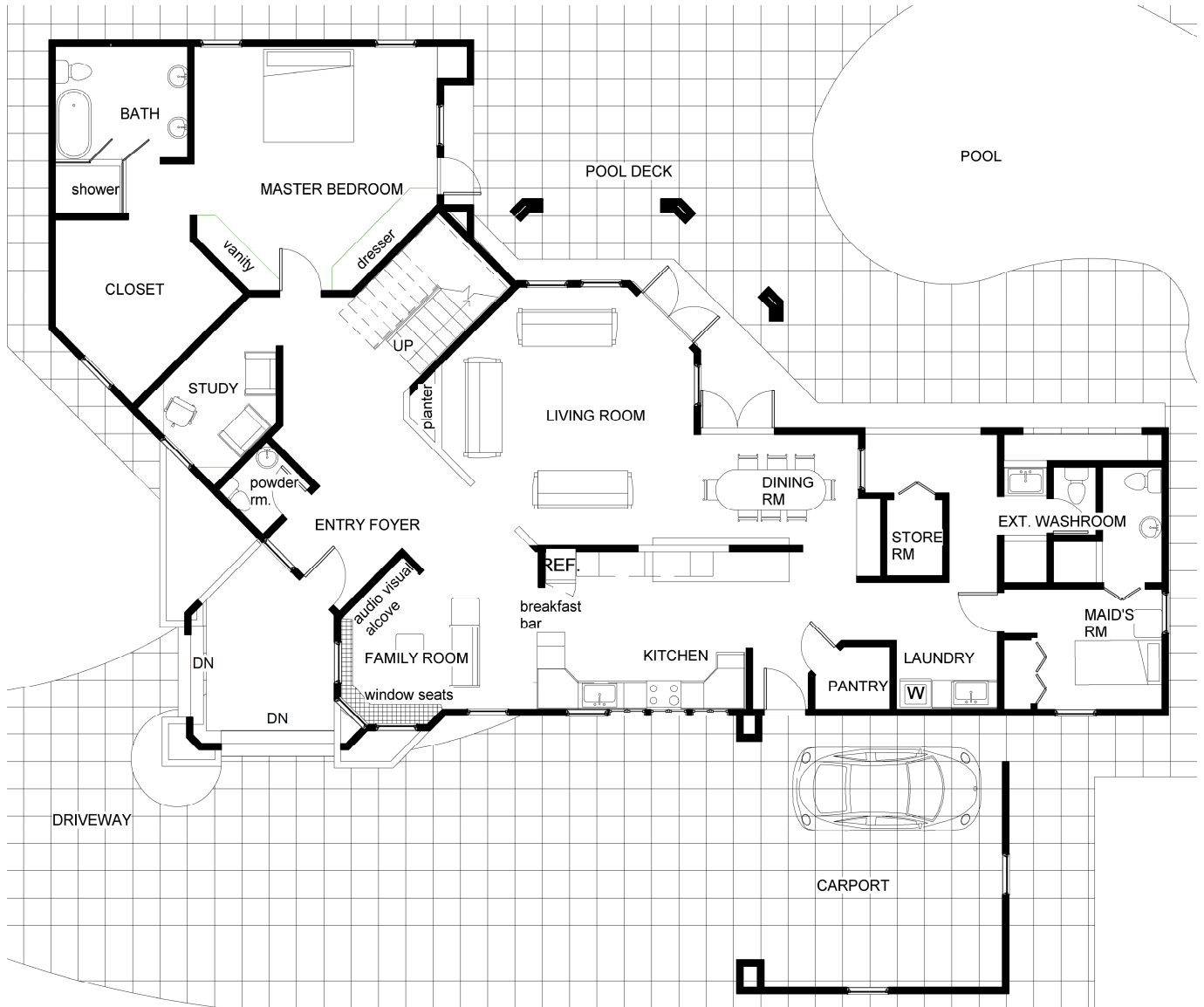
Inspired by Guyana's sprawling Rupununi savannah, this 4058 sf. house sits on a 1/4 acre plot and features:-

- an extended private pool deck retreat complete with bathroom facilities and outdoor kitchen
- an irregular shaped recreational pool 44ft long.
- a two vehicle carport
- 2788 sf main floor
- 1270 sf upper floor
- 4 bedrooms
- 4 full baths
- 1 half bath
- Liv-in maids quarters/guest room
- A study / home office
- The design also features a large double height living room, an elevated deck that overlooks the poolside. A large kitchen, formal dining area, breakfast bar, pantry and laundry room

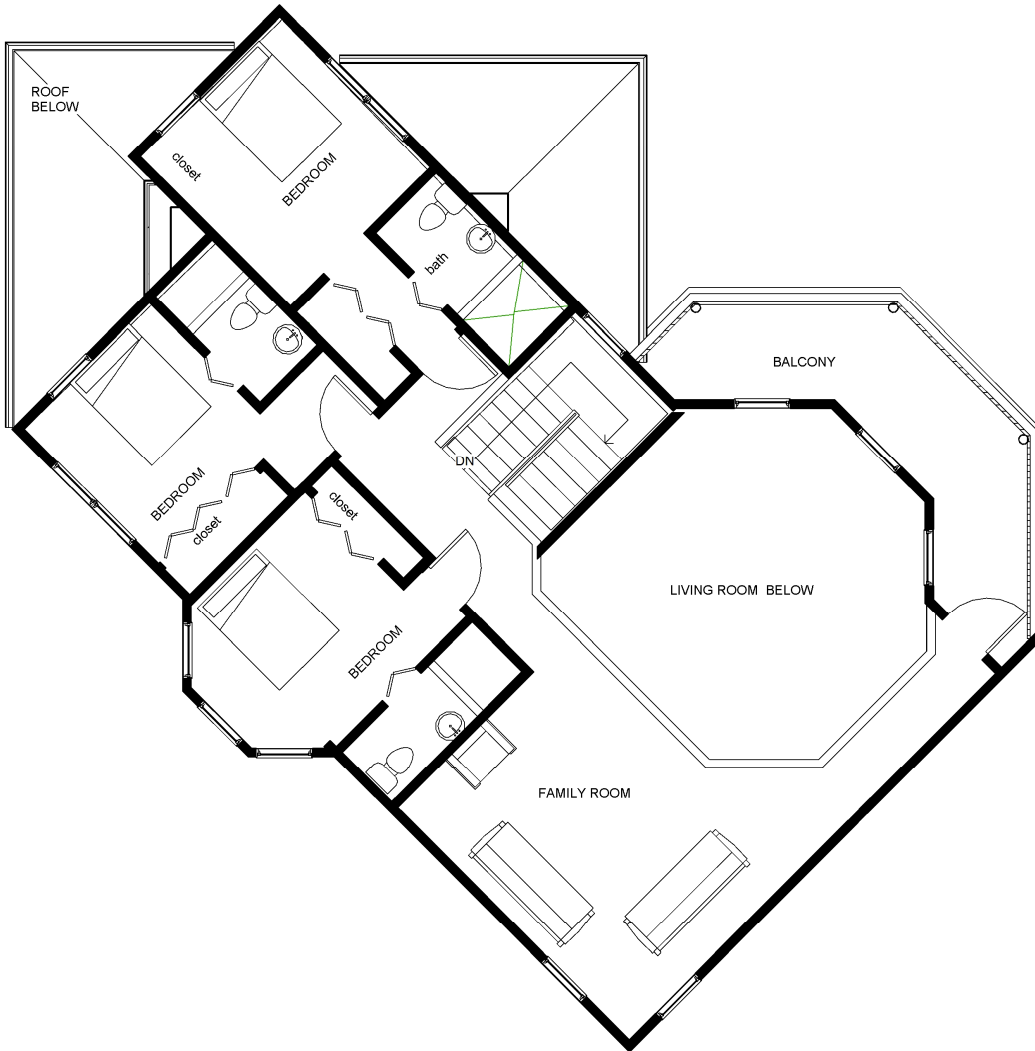


Material selections include:-

- External Walls:- 6" Plastered and painted block-walls
- Roof: - Stone coated metal tiles.
- Windows: - " Abel Astralite" uPVC clad casement windows
- Floor Finishes: - A combination of thru body porcelain tiles and laminate timber flooring



Lower Floor Plan



Upper Floor Plan