



COUNSELLOR

2022

St Paul's and St George's (Ps & Gs) is a vibrant Scottish Episcopal (Anglican) church with a congregation of around 1,000 which has at its heart our belief that we are called to be whole life disciples, sharing the whole of the gospel, with the whole of society, through churches of grace.

We are looking for an experienced Counsellor to join our staff team of talented people. You will provide counselling sessions as well as providing supervision for a number of volunteer counsellors who assist the service.

Is that you? Keep reading to find out more.

Thank you for expressing interest in the Counsellor role at Ps & Gs. I hope you find the enclosed material helpful in telling you a bit more about the church, and the job. If I can help in any way, do please get in touch with me via the church office.

Ps & Gs Church is a large and dynamic church located in Edinburgh's city centre. Our Counselling service is well established and serves both people who are part of the congregation and people who are referred from other services.

Please be assured of our prayers as you seek whether God is calling you to join us. Thanks again for your interest.

Yours warmly,

Dave Richards, Rector



About Ps & Gs Counselling

The Counselling Service, which was established around 30 years ago exists:

- to provide support for anyone in the congregation, from the wider church, and from the local community. Referrals also come from local GP practices.
- to encourage counsellors in training by offering practice placement opportunities.
- to proactively liaise with other agencies, particularly those with a Christian ethos.
- to provide listening and CPD courses.
- to raise the profile of the church as a place where people can bring their difficulties and receive a professional service.

The current staffing profile consists of the Head of Counselling (Shirley Sim), Counselling Administrator (Abi Reynolds), several volunteer counsellors and placement students. It is a generic service with specific expertise in individual and couples counselling.



About Ps & Gs Church

Built in 1818 and refurbished in 2008, the church building stands in a strategic location in the heart of Edinburgh's New Town. Ps & Gs Counselling operates in an adjacent building on York Place. We have three Sunday services and a separate Church Online service, a vibrant community life with over 50 ministry areas, and many opportunities to serve those around us.

We are at an exciting time in the life of Ps & Gs. As society rebuilds after the global pandemic, we have been continuing to deliver and expand our ministries to respond to the ever-changing needs of our congregation and city. As well as Sunday services, we offer a wide range of courses, activities and ministries.

We are passionate about evangelism and run the Alpha Course both in person and online. Our Saturday Meal reaches out to the homeless and vulnerable in our community by providing a free meal every weekend. Our Counselling Service is responding to the challenges caused by the pandemic. Our Children's Ministry is engaging regularly with families who are delighted to be able to meet in person again, whether they attend church on Sundays or through our midweek Babies and Toddlers group.

We are a gathered church, and so encourage people to become whole life disciples through local Connect Groups. We ask that anyone who calls Ps & Gs their home church gets actively involved by regularly praying for the work, serving as part of a volunteer team, and by giving financially to keep making church happen. We are hugely thankful for the generosity of our congregation.

STRATEGY

We believe that God wants us to be a church that takes calculated risks; to be innovative, radical and creative in our worship, evangelism and life together. We have adopted a strategy for 2020-2025 (Stretch 25) and this includes ambitious targets to help us grow and develop as a church.

We have planted two churches in the last 8 years and have plans for several more in the coming years. We are exploring the possibility of creating a Wholeness Centre in the city to reach and serve the people of Edinburgh.

Our current **Stretch 25** strategy has four strands:

- Changing Lives
- Transforming Society
- Deepening Influence
- Church Planting

A summary of our strategy is on our website:

www.psandgs.org.uk/strategy

Our structure

Vestry

The Vestry operate as non-executive trustees and hold the responsibility for finance, property, safeguarding and the overall strategic direction of the church.

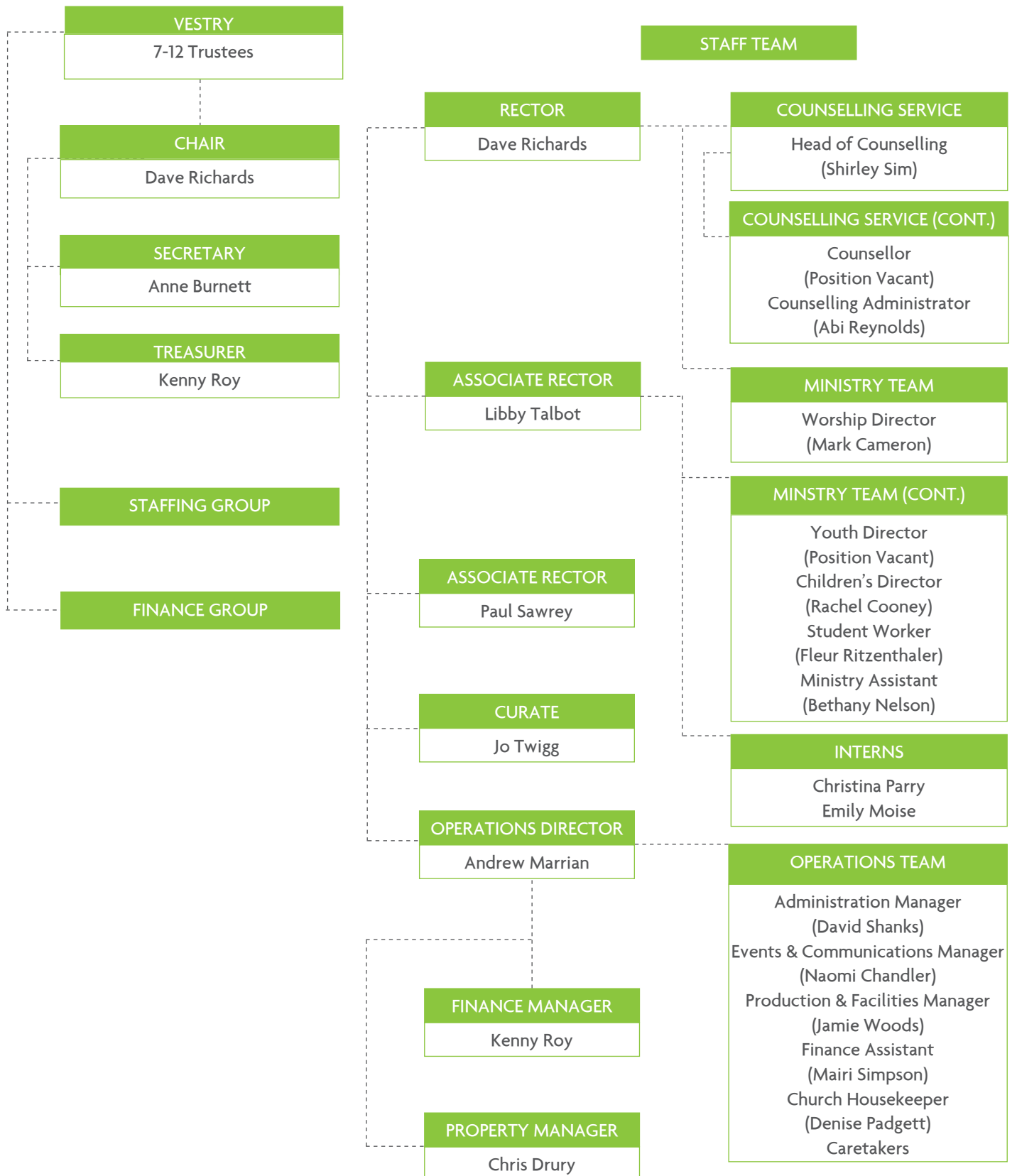
The Vestry is made up of elected members of the congregation, clergy, Operations Director, and is chaired by the Rector.

Staff and Volunteers

The staff are responsible for enabling the day-to-day operational ministry of the church.

The church has a strong volunteer base of over 400 as well as various areas of ministry coordinated by volunteer-led teams.

See the team: www.psandgs.org.uk/staff



About the role

4

This post will support the Head of Counselling in the development of our well-established service at Ps & Gs Church. The key areas of your responsibility are:

1. Service Provision

- Responsibility with the Head of Counselling for provision of initial assessment, allocation and onward referral of new clients
- Provision of counselling sessions, both open-ended and time limited
- Review and evaluate clinical work through supervision to ensure competence, fitness to practice and compliance with professional standards
- Be open to responding to new possibilities for extending and developing the service

2. Training and Supervision

- Alongside the Head of Counselling, ensure appropriate supervision of the counselling team including student placements
- Offer continuing professional development with the Head of Counselling
- Maintain own personal professional development
- Maintain the outward facing aspects of the service, by proactively liaising with other agencies, specifically those with a Christian ethos, and the provision of continuing professional development courses.
- You will provide supervision to counsellors in other services with whom we have a mutual supervisory agreement

Desirable

We are seeking to increase our couples counselling capacity and the postholder would ideally have a qualification or be keen to train in couples counselling.

About you

We believe the post-holder will:

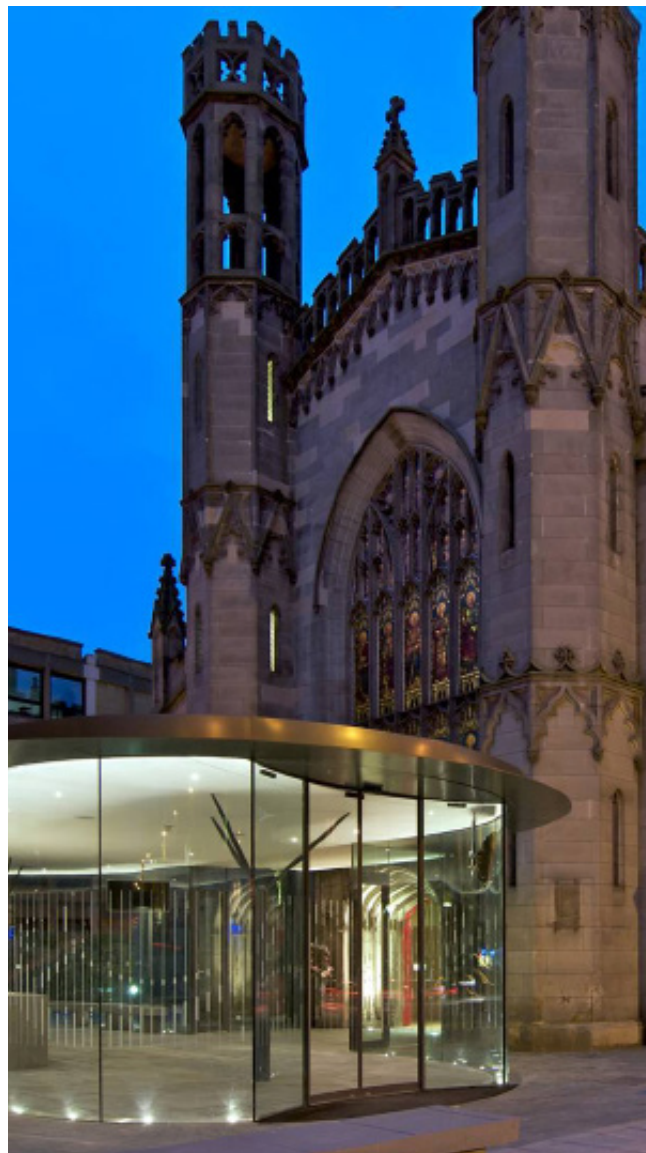
1. Have a gift and passion for counselling and supporting others
2. Have demonstrable post qualification counselling experience
3. Have a qualification in supervision
4. Have an understanding of a variety of counselling approaches, particularly the Vital Connections or other integrative model
5. Have proven ability in clinical assessment, consultation skills, liaison, negotiation and referral skills
6. Be an integral member of the staff team who will participate in staff prayers and meetings
7. Be able to plan carefully, provide input to strategy, organise, prioritise and respond with flexibility
8. An excellent communicator with good interpersonal and IT skills
9. Be a member of a professional body/accredited register

To apply:

Please complete an application form available from:

www.psandgs.org.uk/jobs

The post start date is by mutual agreement



Key Benefits

1. Salary is negotiable dependent on experience, but is in the range of £14,000-£15,000
2. 25 days holiday (pro-rata), plus 5 designated public holidays, plus 5 public holidays (pro rata) to be taken at a time of your choosing
3. You will be enrolled in a direct contribution pension scheme (NEST) or by agreement contribute into an alternative scheme
4. Regular training and development opportunities

Key Information

1. The role is 18 hours per week, excluding breaks, to be worked flexibly as required. (Monday-Thursday morning, with evening appointments required)
2. The post is permanent
3. The probation period is 6 months
4. The notice period is 3 months
5. The role reports to the Head of Counselling
6. The appointment will be subject to you obtaining a PVG Scheme Record (Enhanced Disclosure) through Disclosure Scotland
7. This post carries an Occupational Requirement, in line with the Equality Act 2010, that the successful candidate is a practicing Christian
8. You will become a member of Ps & Gs and will be committed to our vision, values and strategy