

Who are we and what do we do?

Soundplay Projects is a SCIO created by artists Bal Cooke and Ewan Sinclair. We design and make accessible, inclusive, installations, events, objects and projects across Scotland and further afield. We work with physical objects (instruments), sound, music and light to make music with other people. We weave together these multi-sensory modes of communication through the innovative use of technology, tactile materials and lots of experimentation and play with the young people we work with.

This work is delivered through regular weekly workshops, one-off events, projects with partners and commissions. Our work usually takes the form of one-to-one sessions or group workshops depending on people's needs and requirements. We currently work with partners in Aberdeen, Dundee, Edinburgh and Glasgow and in areas in the north of England. Our work is accessible for everyone and public events draw very interesting and diverse audiences. We're based in Glasgow where we are developing our facility 'the Playspace' a multi sensory arts and music space.

Our core work is with and for young people who identify as having additional support needs, disability and or identify as being neurodivergent. These young people often face barriers to participation because of their additional needs both socially and culturally. Soundplay creates opportunities for these people to come together, play, experiment, create and perform with sound and music. It's great fun, creatively challenging and immensely rewarding. Feedback from young people and families has told us that this work is important in their lives and that our workshops are sometimes the only activities they can access.



Soundplay Projects is led by Ewan Sinclair and Bal Cooke. They bring many years of experience working in community arts settings, care organisations and schools. They are supported by a small team of freelancers and specialists. Ewan has a visual arts background and Bal is a musician and sound artist. Together they have lots of experience in community arts, theatre, performance and contemporary arts contexts. As Creative Directors they split their time between running the charity, delivering projects and conceiving new work.



The charity engage a small team of freelancers whose age ranges are between 20 and 29 years old. There is a lively and experimental underground music scene in Glasgow with many young artists making it their home after studying at the Royal Conservatoire of Scotland, Glasgow School of Art and Glasgow Uni. This scene has provided a steady stream of volunteers, assistants and freelance musicians who have worked for us over the last 6 years. Our wide ranging and multi-art form approach to music making means we have a lot of different, exciting opportunities for young people. We run a regular artist workshop programme called 'Soundtracks' and support artists in residence through our main creative Scotland funded programme.



INCLUSION AND ACCESS

Vision Statment

We use technology, music and play to create meaningful communicative experiences. Engaging people of all abilities through human interaction.

Mission Statment

Our mission is to pioneer inclusive and accessible immersive arts experiences, carefully combining technology, creativity, and collaboration to break down barriers and empower individuals of all ages and abilities. Through our innovative workshops, installations, and partnerships, we strive to cultivate creativity, foster connections, and promote social inclusion, ultimately transforming lives and enriching communities.

Impact

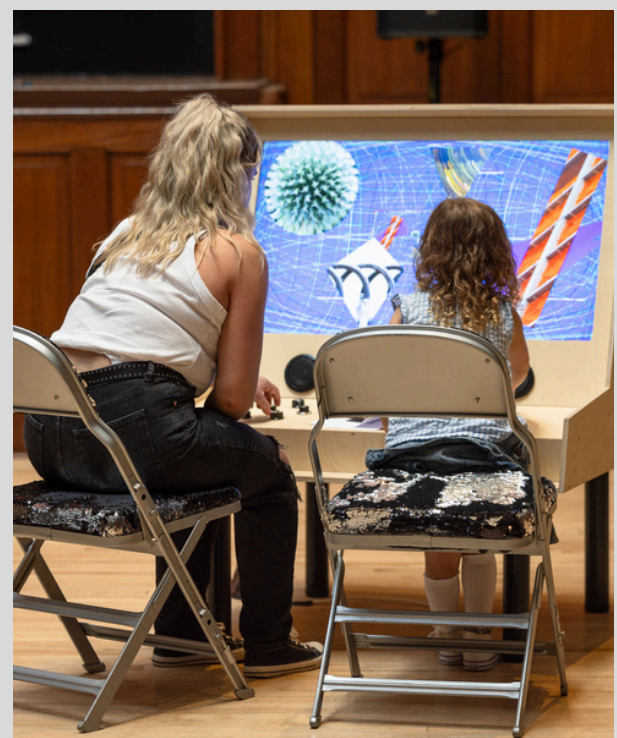
We are curious and caring in the way we make our work. Our unique skills, knowledge and art works are important and valued resorces for the communities we work in.

Inclusion and access led work, with people of different abilities, drives our responsive design process and artistic vision.

We make work with people who face some of the most challenging circumstances and barriers to participation in society. We value being part of these communities and help to make them stronger.

Vision Mission Impact

"This was the most accessible and enjoyable musical experience my daughter has ever experienced"



CAREFUL

CURIOSITY

We think everyone should be included in, and have access to creative opportunities:

Diversity and Inclusion:

We create inclusive spaces where everyone feels valued and respected. Diversity and inclusion are at the heart of our work

Innovation and excellence

We embrace creativity and innovation, constantly seeking new ways to engage and inspire through our artistic endeavours. We value and support the skills and knowledge of the wider artistic community.

Collaboration

We believe in the power of collaboration and work closely with our communities, partners, and stakeholders to co-create meaningful experiences.

Accessibility

We are committed to ensuring accessibility in everything we make and do, removing barriers and making our programmes and spaces accessible to all.

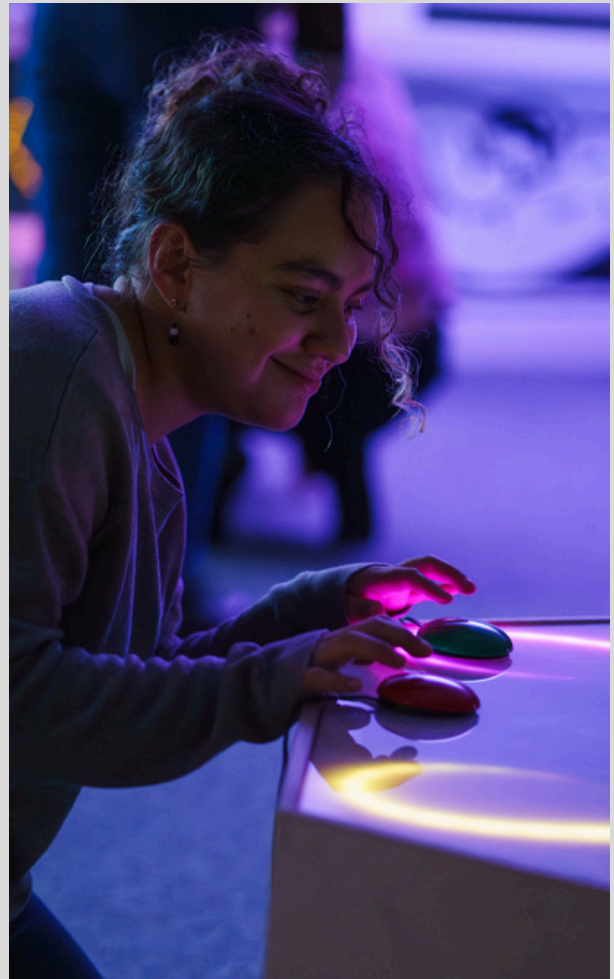
Fair work

We are dedicated to fair employment practices, providing equitable opportunities, fair wages, and a supportive work environment for all members of our team.

Sustainability

We are committed to environmental sustainability, minimising our ecological footprint and promoting responsible stewardship of resources.

VALUES



Audience and Facilities

We primarily work with young people with protected characteristics who often identify as; disabled, neuro-divergent and or as having additional support needs. We invent, create and play with music technology, immersive environments and tactile materials. We support young people within this process to have creative ownership over these specially designed safe spaces for creative expression and agency. We are building an infrastructure and key assets that are developed through our touring projects and studio development.

Soundplay Projects is based in Glasgow's city centre where we have our office and **Playspace**. Situated in a former office block, the Playspace consists of a number of adaptable audiovisual spaces for experimentation, improvisation and play. The Playspace embodies our engagement principles and offers a dedicated experimental art space to try out new ideas, work long term with people and bring the wider community together for events. Our charity status means we incur very low running costs.

Our **Studio** is a workshop space next to the playspace in a former call centre. The facility is set up to explore electronics, digital fabrication and construction. Driving innovation and creative development. At the studio we delve into sound, vibration, tactile materials, and dynamic visuals. We then refine developments through evaluation and testing at the Playspace, outreach programme and other events.



Resourcing

Installations

'The Soundplay Dome', is a tour-able musical sensory space for all. Based on high quality multi sensory creative exploration, this immersive touring architecture is easy to set up and incredibly versatile in its delivery.

'The Ambient Arcade' Is a suite of accessible audiovisual sculptures that playfully engage through communicative and digital exchange. Based on audio visual synthesis, touch and interaction design.

'The Sub Bass Soft Space' Is a meditative, haptic bean bag sound system. Developed by working with deaf blind young people and their families. This vibrational approach to sound and music slows everything down.

'Super Enormous Projection Band' Is a tactile multi screen projection environment where conventional instruments and our own range of accessible interfaces can seamlessly control abstract scalable video projection.

Our installations are employed across our programme. They also form part of our Generated income stream.

OD and Governance:

As we continue to grow and develop as an organisation, we will outline an organisational development plan.

2024-25

Governance:

We are governed by volunteer Trustees who have been recruited for their skills and expertise. They are responsible for:

- The overall strategic direction of the charity
- Supporting the leadership team
- Setting and monitoring our progress and achievements against our objectives
- Overall responsibility for compliance and finance

They meet every 4-6 weeks to support, advise and develop our work as well as meet with the full staff team twice per year. Board capacity will be reviewed annually with a minimum of 2 new trustees added per year. The leadership will work with the trustees to build effective and accessible pathways for members of the steering group, parents/caregivers and artists to move into trustee positions to ensure we remain an inclusive, diversity led and person-centred arts organisation.

Key areas of work to support organisational development:

- Trustee skills audit and recruitment
- Develop clear pathways for trustee recruitment and induction
- Develop robust and fair HRM processes for recruitment support and induction
- Annually review demographics of staff and implement a plan for improved diversity

Staffing current and future:

Currently our staff are transitioning from freelance contracts to employed positions. This will not only support fair work principles but also ensure more sustainability and capacity for Soundplay Projects moving forward. We will introduce 4 part time posts to our operations team as well as grow our freelance pool of artists over the next 3.5 years to ensure we have the capacity we need to grow and thrive.

We give our staff an effective voice and involve them in quarterly sessions where they can provide feedback, build peer networks and learn more about the work we are doing/our operations. This feedback is then provided to the trustees and supports our strategic objective setting and learning and development plans for the next 3-6 months.

Over the next 4 years we will build and grow a well supported and managed volunteering programme to increase awareness of working with people with ASN and disabilities as well as support skill development and personal growth.

EXTERNAL ENVIRONMENT

Partnership working is an integral part of Soundplay Projects' engagement process across Scotland. We will build partnerships where there is a shared desire to be more inclusive. This allows us to pool resources, include in-kind support, and work with venues to ensure appropriate access requirements.

Through continued partnerships with Dundee Contemporary Arts, Aberdeen Art Gallery and OneRen we will maintain wider partner networks with charities (Charlie House, SensationALL), connections with local schools, care organisations and other arts organisations. This web of support is a strong platform for leveraging local authority and other regional funds. It also fosters much deeper connections with participants as we work with them across the services they access.

Focusing on relationship building with key people within partner organisations ensures parity of values, aims and objectives. Often this informal network of professionals can be really supportive, sharing skills and specialist knowledge.

When building Special Projects with partners this understanding helps to instil trust allowing everyone to take risks and make really exciting exhibitions and events.



PARTNERSHIPS



"As Soundplay are based in Glasgow, visiting north east Scotland is invaluable. Too often services like this are not able to make the journey because they think the demand is not there. It is there, and, in some cases, it is needed even more, due to there not being as much available."