



**QUESTION 3: ISOMETRIC DRAWING**

**Given:**

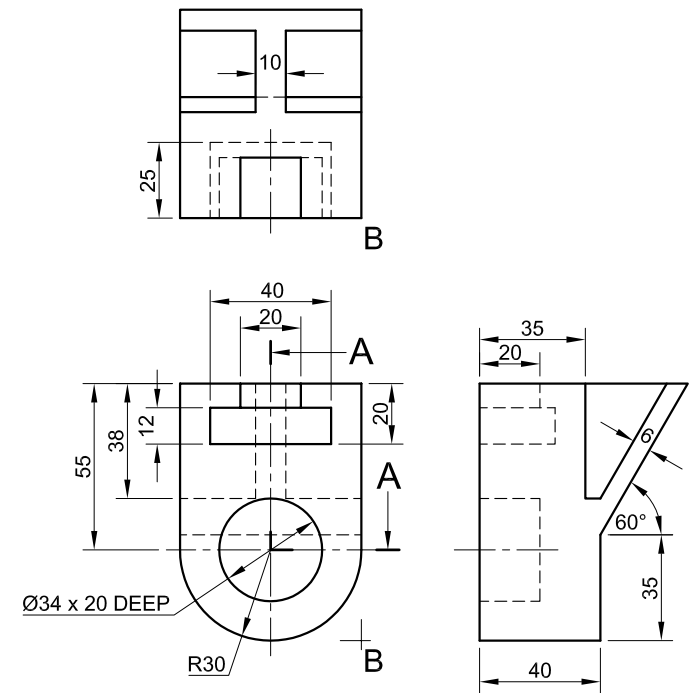
The front view, top view and right view of a jig bracket with a cutting plane A-A.  
The position of point B on the drawing sheet.

**Instructions:**

Convert the orthographic views of the jig bracket into a sectional isometric drawing on cutting plane A-A.

- Make corner B the lowest point of the drawing.
- Show ALL necessary construction.
- NO hidden detail is required.

[44]



↓  
B

ASSESSMENT CRITERIA			
CONSTR' + AUX + B	8		
ISO' CIRCLES + CNTR LINES	8½		
ISO' + NON-ISO' LINES	12		
SECTIONED SURFACES	10½		
HATCHING	5		
<b>TOTAL</b>	<b>44</b>		
EXAMINATION NUMBER			
EXAMINATION NUMBER			
EXAMINATION NUMBER			4

