



QUESTION 3: PERSPECTIVE

Given:

Two views of a clubhouse with a built-in braai and the information needed to draw a two-point perspective drawing.

PP – Picture Plane

HL – Horizon Line

GL – Ground Line

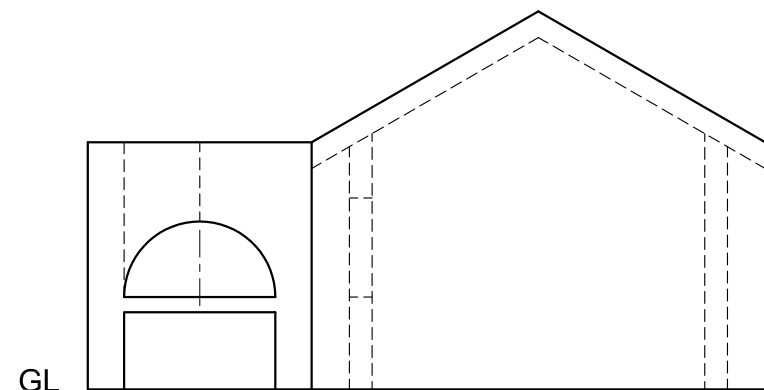
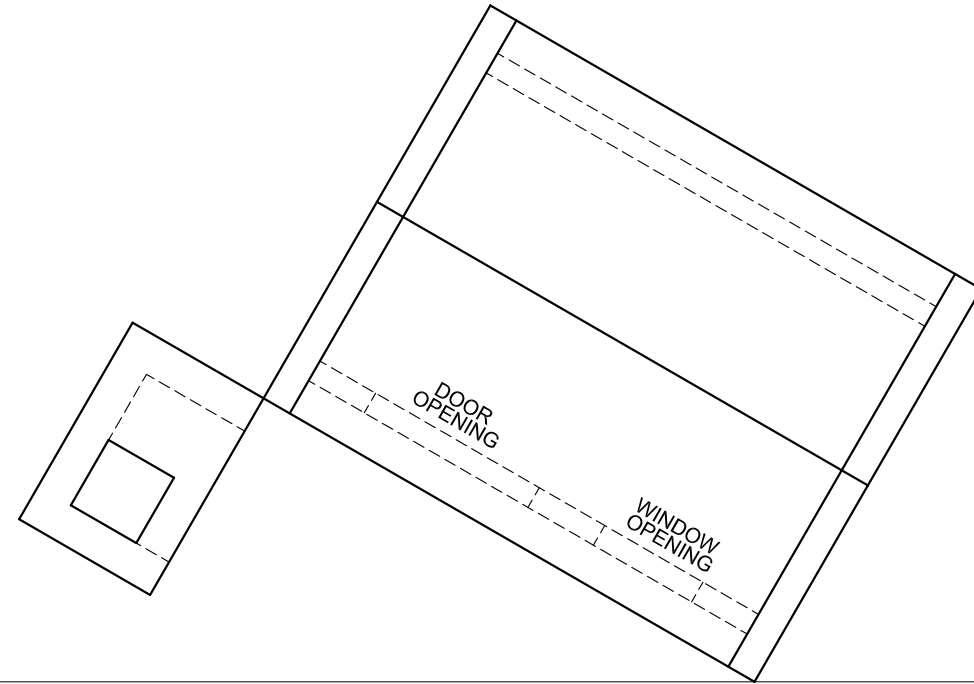
SP – Station Point

Instructions:

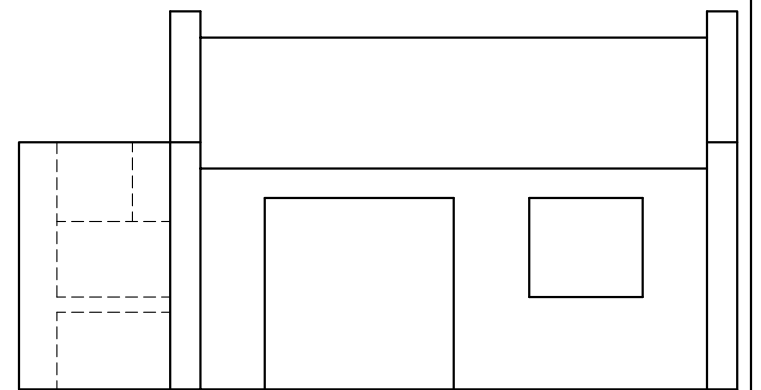
Complete the perspective drawing.

- Align the drawing sheet with the horizon line (HL).
- Locate and label the vanishing points.
- Show ALL visible detail inside the dwelling.
- NO hidden detail is required.
- Show ALL necessary constructions.

[36]



GL



+
SP

ASSESSMENT CRITERIA			
CONSTRUCTION + VPs	6		
DWELLING (A)	17½		
BRAAI (B)	12½		
TOTAL	36		
EXAMINATION NUMBER			
EXAMINATION NUMBER			
EXAMINATION NUMBER			4

