



education

Department:
Education
REPUBLIC OF SOUTH AFRICA

**NATIONAL
SENIOR CERTIFICATE**

IGREYIDI 12

ISINDEBELE ILIMI LEKHAYA (HL)

IPHEPHA LOKUTHOMA (P1)

FEBHERBARI/MATJHI 2010

IMITLOMELO: 70

ISIKHATHI: ama-iri ama-2

Iphepheli linamakhasi ali-9.



YELELA

1. Iphepheli lineengaba ezintathu: ISIGABA A, B no-C.
ISIGABA A: Ukufunda nokuzwisisa (30)
ISIGABA B: Ukurhunyeza (10)
ISIGABA C: Ihlelo nokusetjenziswa kwelimi (30)
2. Funda imiyalo yoke ngokuyelela okukhulu.
3. Khetha imibuzo ukuya ngemiyalo onikelwe yona.
4. Phendula yoke imibuzo ngaphasi kweengaba onikelwe zona.
5. Thoma umbuzo ngamunye ikhasini elitjha.
6. Iimpendulo azinikelwe iinomboro izifana nalezo izisemibuzweni ebuziweko.
7. Tlola ngesandla esihle nesibonakalako.
8. Yelela ukupeledwa kwamagama kanye nokwakhiwa kwemitjho.

ISIGABA A: UKUFUNDA NOKUZWISISA**UMBUZO 1**

Phendula imibuzo engaphasi kweengatjana zombili, u-1.1 kanye no-1.2.

1.1 Funda itheksti elandelako uyizwisise bese uphendula imibuzo engenzasi.

AMANZI

Amanzi siphila ngawo. Iingazi zethu zinamanzi. Ubuqopho bethu bunamanzi. Amathe, iinyembezi nokhanye, koke kunenani elithileko lamanzi.

Amanzi siwathola emadamini, emithonjeni, emalwandle, emilanjani nakwezinye iindawo. Amanzi amanengi esiwathola eendaweni ezibalwe ngehla abuya ezulwini. Lithi lingana izulu amanzi ageleze agcwalise imilambo, amadamu, imithombo njalonjalo. Kwesinye isikhathi izulu lina ngesinanga, ngemuva kwesikhathi isinangesi siyancibilika sibe mamanzi. Ebusika kulala irhwaba, nalo liyancibilika bese liba mamanzi.

Koke okumila ehlabathini okunjengemithi kanye neenhlaha kumunya amanzi wezulu angaphasi kwephasi nanyana lawa esisuke sithelilele ngawo. Amanye walawo manzi abuye arhwamuke lokha iintjalo, iinhlaha kanye notjani kuphefumula. Amakari enza ngasuthi ayafoma. Lawo manzana akabonakali emini ngombana ayarhwamuka, abonakala ekuseni. Ngiwo lawo manzi esivane sithi mbethe. Iinthelo ezinengi esizidlako zisinikela amanzi amanengi. Lokhu kufaka hlangana ama-orentji, amapiyere nezinye. Zoke iinthelo zinamanzi. Minengi nemirorho esiyidlako enamanzi njengembuya, isipinitjhi neminye.

Amanzi asisekelo sepilwethu. Nasiphekako sisebenzisa amanzi. Sihlamba ngawo amanzi begodu sihlanze nezembatho zethu ngawo. Amanzi siyawasela, senza ngawo itiywe, utjwala, inamaneyidi, siyenza ngawo njll. Asisiza nalokha sakha izindlu. Iintjalo zibhagwa ngamasamende, isanda namanzi. Ayikho indlu eyakhiwe ngaphandle kokusebenzisa amanzi.

Iphasi selaphucuka, abantu abanengi sebakhanyisa ngegezi. Igezi le yenziwa ngamalahle. Kade bekade kuphehlwa amalahlwe ukuze kwenziwe igezi. Namhlanje igezi yenziwa ngamanzi. Kubekwa imitjhini ethileko hlangana namadamu amabili. Amanzi asedamini lokuthoma eliba ngehla ayavulelwa athelwe emtjhinini ozombelezako bese kwakheka igezi.

Amanzi awasizi thina kwaphela, iibandana nazo ziyawadinga. Ngaphandle kwamanzi angeze zaphila. Ifuyo kanye neembandana angeze zaphila ngaphandle kwamanzi. Amanzi kumele abulungwe. Lokha umuntu nakahlambako kumele athele amanzi alingeneko. Angahlambi ngedamu loke. Lokha nasithelelelako kumele sikhumbule bona iinhlaha, iintjalo notjani kumele sizithelelele ngamanzi alingeneko ukuze kungenzeki idaka. Ukuthelelela khulu akusizi. Iintjalo nemithi kumunya amanzi amancani. Woke lawa amanye amunywana yihlabathi. Lokha nakuvaswa iinkoloyi kumele kusetjenziswe amathungana ingasi amaphayiphi.

- 1.1.1 Tlola OKUBILI okusendatjaneni okutjhugulukako kube mamanzi nakuphuma ilanga. (2)
- 1.1.2 Tlola OKUBILI umuntu angakwenza ukubulunga amanzi. (4)
- 1.1.3 Hlathulula bona kwenzekani lokha nasithelela iintjalo khulu. (2)
- 1.1.4 Tlola izinto EZIMBILI ekuphehlwa ngazo igezi. (2)
- 1.1.5 Ingabe ngokuya ngawe ngikuphi okuqakatheke khulu phakathi kwamanzi negezi? Sekela ipendulwakho ngomutjho OWODWA. (3)
- 1.1.6 Kungani kuthiwa amanzi asisekelo sepilwethu? Ipendulo ayibe mumutjho. (2)
- 1.1.7 Tlola enye yeendlela abantu abangabulunga ngayo amanzi engakabalwa ngehla. (1)

1.2 Funda itheksti elandelako uyizwisise bese uphendula imibuzo engenzasi.

UMLILO

Umlilo yinto eqakathekileko eempilweni zethu. Ipilo yanamhlanje seyithuthukile ngombana umlilo ubaswa ngeendlela zesimanjemanje. Indlela yokutika ngeentoro zomlilo ifike nethekinoloji etja efike neenarha zeTjingalanga.

Nanyana izinto ezinengi sele zisebenza ngegezi kodwana amabubulo akhiqiza iinthoro zomlilo akakalilahli ithemba. Asayithola ibhizinisi eendaweni zemakhaya ekungilezo ezisasebenzisa indlela yakade yokubasa. Phela kilezo ndawo igezi ayikafiki. Abantu abasebenza nabo bayasizakala ngobujamobu ngombana phela bazitholela amathuba womsebenzi.

Umlilo uyingozi khulu nangabe utjhiswa eendaweni ezingakafaneli njengalapho kunamabhodo athi akufuneki kubhenyelwe khona. Lamabhodo ayatholakala emabubulweni amakhulu la kubekwa khona iinhlahla ezinamandla begodu ezingazwani nomlilo. Eentetjhini zepetroli nakhona izaziso ziyabekwa. Umlilo nawungatukeka eendaweni ezinjalo, kungathungeleka imakhiwo emikhulu, itjhe ibe mlotha.

Emadlelweni nakhona iyingozi imililo nangabe kulahlwa iinquntu zegwayi ezingakacinywa kuhle. Amadlelo angatjha kube nomonakalo omkhulu. Abantu nabo ungababulala umlilo obalekako. Ifuyo ingatjha beyife. Amahlathi angatjha abe mlotha ngebanga lomlilo obalekako. Kuqakathekile bona abantu bafundiswe ngeendlela zokuphepha nokungatjhisi nanyana balahle iinquntu zegwayi butjhuleni. Lokhu kunganciphisa iingozi ezidalwa mlilo. Abantu kumele bazi bonyana akudlalwa emlilweni.

- 1.2.1 Ingabe umlilo uqakathekile eempilweni zethu? Hlathulula ngephuzu ELILODWA usekele ipendulwakho. (2)

- 1.2.2 Yini eyenza amabubulo enza iinthoro zomlilo(umentjisi) angapheli ithemba nanyana abantu sele basebenzisa igezi? (2)
- 1.2.3 Ukuya ngokwendatjana le, kunabantu abathabako lokha nakuneendawo ezinganagezi, VUMA nanyana UPHIKISE bese usekela ipendulwakho ngomutjho OWODWA. (2)
- 1.2.4 Tlola iindawo EZINE okungaba yingozi lokha nawutika umlilo eduze nazo. (4)
- 1.2.5 Ingabe uyini umsebenzi wemithi ukuya ngawe? Tlola kube KUBILI. (2)
- 1.2.6 Ukuya ngawe ngiyiphi iindlela engasetjenziswa ekufundiseni abantu mayelana nobungozi bomlilo? (2)

IMITLOMELO YESIGABA A: 30

ISIGABA B: UKURHUNYEZA**UMBUZO 2**

Funda itheksti elandelako uyizwisise bese uyayirhunyeza ngawakho amagama uveze amaphuzu amumongo naqakathekileko. Amagama ozowasebenzisa akabe matjumi asithandathu ukuya ematjhumini alikhomba (60 – 70).

IMIRARO YOBUJAMO BEZOMNOTHO

Amadoda semanengi emakhaya. Ayadilizwa emafemeni, eengaratjhi ngitjho nalawo asebenza eendleleni imbala. Sewuthola kubomma abaphethe iimpeke neenrharafu batjhova iinkirivayi. Abanye abomma sekungibo iinduna eziphethe ngitjho amadoda. Inengi labomma ubathola bathwele iinkoporo ehloko, abanye ubathola bambethe ama-ovarolo. La kutjalwa khona umoba uyabathola nakhona abomma, ubathola bakha umoba. Khamba minyaka!

Amadoda emakhaya sekaphenduke abapheki. Umma ubuya ntambama afune ukudla. Nakungenzeka athi nakafikako afunyane kungakaphekwa indoda ingazithola ikomkhulu umraro. Nayingeze yapheka indoda konje ingalithathaphi igwayi ngombana imali yokulithenga ngeyomfazi. Imibhede ekuseni kumele yendlulwe, ibala lithanyelwe begodu lirhulwe, izitja zihlanzwe nabantwana abaya esikolweni balungiselwe ukuya esikolweni. Umma uvuka ngamarimarima aye edorobheni, lokho kutjho bona indoda ikatelelekile bona ikwenze koke ebekwenziwa yikosikazi.

Kuba ngcono amadoda athetheko kunalawo angakathathi begodu angasebenziko. Umhlobo lo wesibili wamadoda ulitshwenyo emphakathini. Amadoda la afuna iindingo zawo zihlangatjewe ngekani. Nakunomrholo wezalukazi ngibo abazi kokuthoma. Sithi singaqeda ukurhola isilukazi sabantu, babe sebalapha. "Gogo akhese ungisize ngeponde ngiyokuthenga igwayi. Ngizoyibuyisa ekupheleni kwenyanga." Isilukazi sabantu ngokwesaba sizayikhupha leyo ponde engeze yabuya. Bangcono-ke abasabawako, abanye bazithathela yona ngekani. Isilukazi sabantu nasingeze sayikhupha, singalahlekelwa buphilo baso.

Amasokana athi angalahlekelwa misebenzi, abone bona kumbi. Phela abentazana banamhlanje abasebenzi ngomuntu onganalitho. Ngalokho amasokana aphenduka iintjhimani. Ziintjhimani zokwenziwa, azibumukeli ubujamobu.

Namadoda ahlanyelwe ziinhloko aya ngokwanda amalangana la. Ayikho indlela ekulu ongadlula kiyo ungamtholi umuntu osele aphanjanelwe yihloko. Siwabona mihla namalanga ehla enyuka nemithwalo emadinini. Amanye sekabona ijele kuyindawo engcono ngombana khona bayakwazi ukuthola ukudla ngaphandle kokuthi bakhuphe imali. Amanye sekaphazamisa abantu abagulako eentradeni ngombana nawo azenza agulako kanti wona aphile tswe. Alo-ke kuzokuthiwani? Boke balambile!

IMITLOMELO YESIGABA B: 10

ISIGABA C: IHLELO NOKUSETJENZISWA KWELIMI**UMBUZO 3**

3.1 Funda umutjho ongenzasi bese uphendula umbuzo.

UHleziphi ugadanga uNciliba ngenyawo.

Buyelela utlole umutjho ongehla, egameni elithalelweko ulungelele ngesakhi esiveza umqondo wokukhulisa. (2)

3.2 Funda umutjho ongenzasi bese uphendula umbuzo.

USosokana kaNcema uhlongakele izolo.

Buyelela utlole umutjho ongehla, esikhundleni segama elithalelweko ufake ubulili obusikazi. (2)

3.3 Funda umutjho ongenzasi bese uphendula umbuzo.

Amalunga weSouth African Democratic Teacher's Union ayokutjhagalela imirholo iveke ezako.

Tlola umutjho ozitlamele wona nge-akhronimi legama elithalelweko emtjhwani ongehla. (2)

3.4 Funda umutjho ongenzasi bese uphendula umbuzo.

Ngibone kungcono ngibethe irhobhe kuphele umlandu.

Thatha isitjho esithalelweko emtjhwani ongehla, uzitlamele wakho umutjho ozwakalako kuvele bonyana uyayazi ihlathululo yaso. (2)

3.5 Funda umutjho ongenzasi bese uphendula umbuzo.

BakwaSiluma bakhuphe imali emakhulu amahlanu batjho yivula + umlomo.

Buyelela utlole umutjho ongehla, ufake ibizo-mvango elifaneleko egameni elithalelweko. (2)

3.6 Funda umutjho ongenzasi bese uphendula umbuzo.

Nawufuna ukuba nesikhumba esithambileko nesitjhelela njengesesana, thenga isizeso mafutha sakwa-*Johnson & Johnson* uzakubona umehluko msinyana.

Ingabe yini ihloso yelimi elisetjenziswe ethekstini engehla? Kubayini utjho njalo? Sekela ipendulwakho ngomutjho OWODWA. (3)

3.7 Funda umutjho ongenzasi bese uphendula umbuzo.

Indlela abantu beengubo ababunjwe ngayo abakafaneli bonyana bambathe amabhangu.

Ingabe umutjho ongehla lo uveza ukubandlulula na? Sekela ipendulwakho ngomutjho OWODWA. (3)

3.8 Qalisisa isikhangisi esilandelako bese uphendula imibuzo.

JABULANI NOKE COLLEGE

Nawudinga ilwazi lekhomphyutha ngokuzeleko, yiza kithi ufumane koke okuthogako.

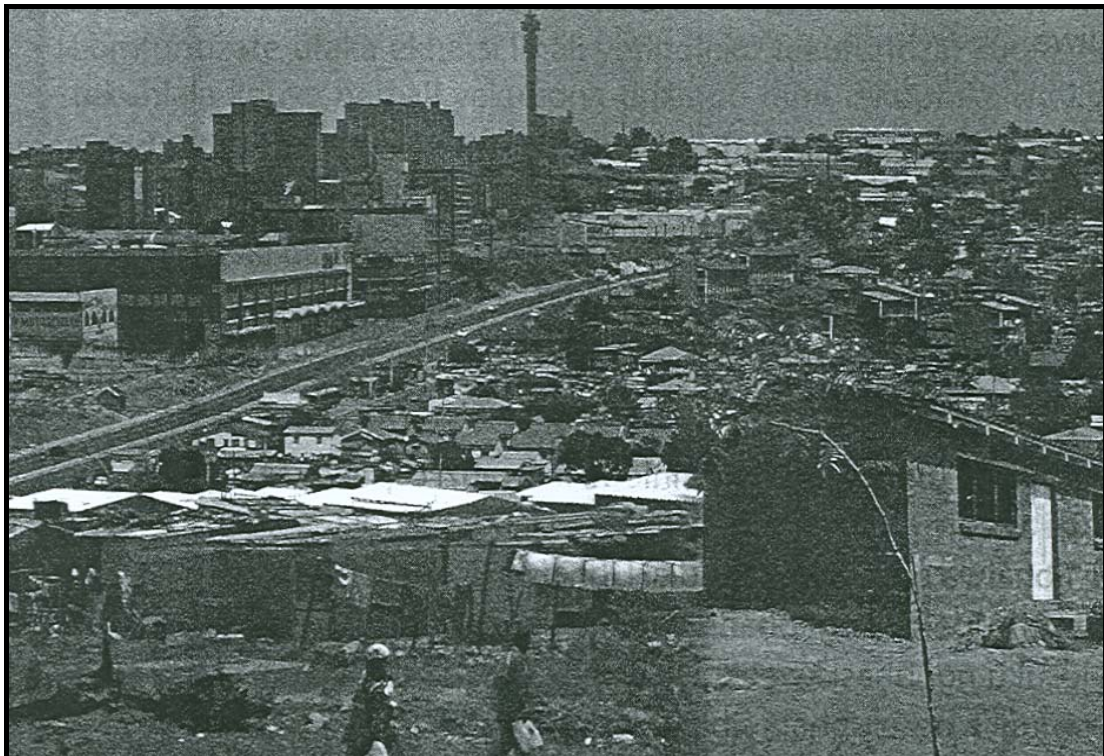
Imibandela:

- Phatha isitlankana esikhombisa umrholo ongaphezulu kweenkulungwana ezimbili.
- Yiza nelwazana elincanani langaphambili ngekhomphyutha.
- Yiza nesitifikedo seGreyidi 12.

3.8.1 Esikhangisini esingehla kubayini amagama athi '**JABULANI NOKE COLLEGE**' atlolwe ngamaledere amakhulu? (2)

3.8.2 Esikhangisini esingehla kubayini imibandela itlolwe ngamagama amancani kangaka? (2)

3.9 Qalisisa isithombe esingenzasi bese uphendula imibuzo elandelako.



- 3.9.1 Hlathulula ngalokho okubona esithombeni okumayelana neendawo zokuhlala. (2)
- 3.9.2 Ingabe yini ebangela bonyana abantu bakhe imikhukhu eduze nemadorobheni? Veza amaphuzu abe MABILI. (4)
- 3.9.3 Ucabanga bonyana ngikuphi urhulumende angakwenza kobana abantu bangakhi imikhukhu emadorobheni? (2)
- 3.9.4 Tlola umraro owaziko ovamise ukuba khona emikhukhwini yeSewula Afrika. (2)

IMITLOMELO YESIGABA C: 30

INANI LOKE: 70

