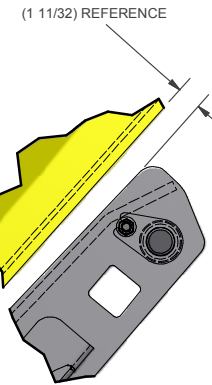
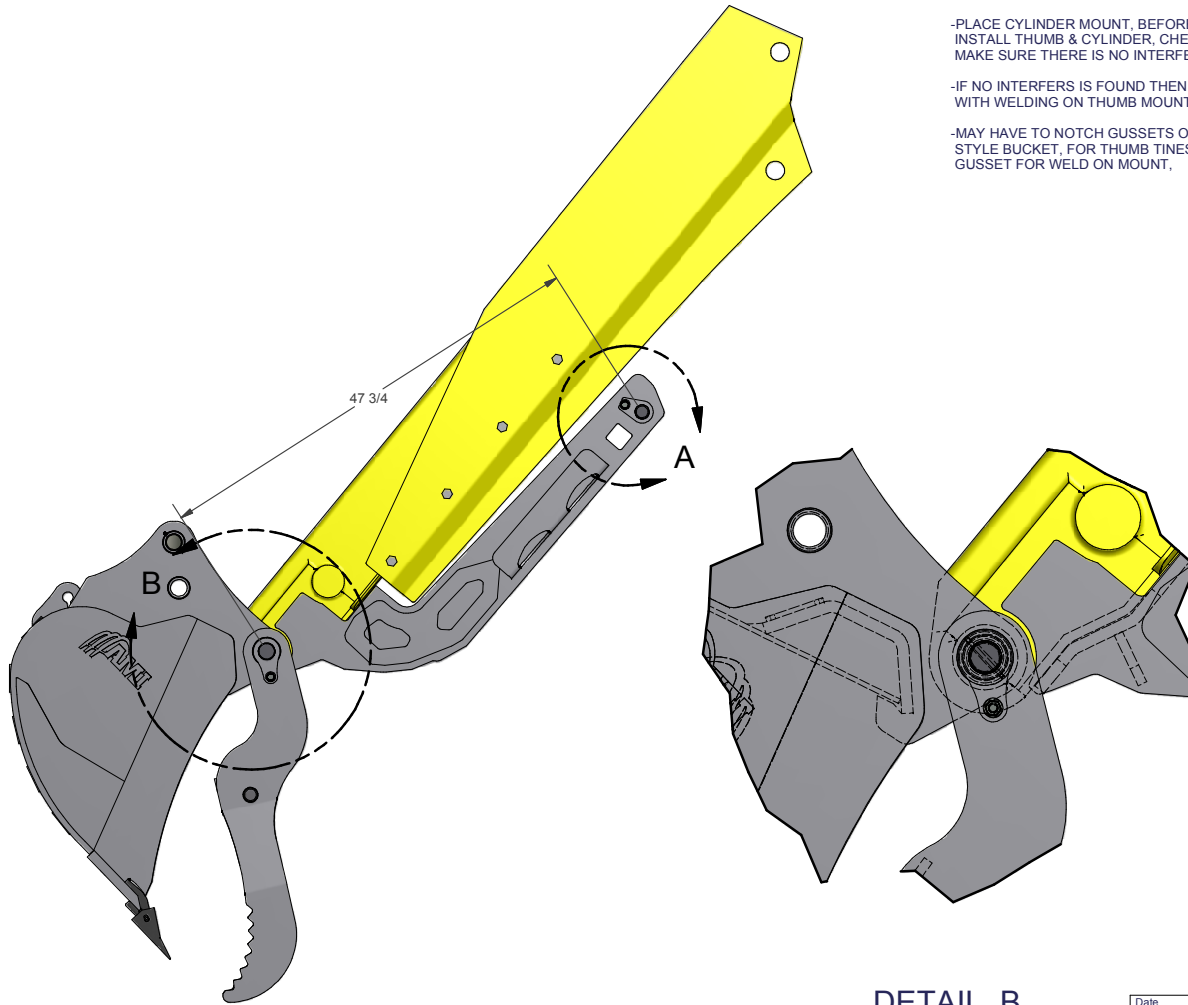


THUMB MOUNTING INSRUCTIONS:

-PLACE CYLINDER MOUNT, BEFORE WELDING MOUNT ON
INSTALL THUMB & CYLINDER, CHECK ROTATION OF THUMB
MAKE SURE THERE IS NO INTERFERES WITH MOUNT,

-IF NO INTERFERS IS FOUND THEN PROCEED
WITH WELDING ON THUMB MOUNT

-MAY HAVE TO NOTCH GUSSETS ON NEW HOLLAND
STYLE BUCKET, FOR THUMB TINES AND ALSO INSIDE
GUSSET FOR WELD ON MOUNT,

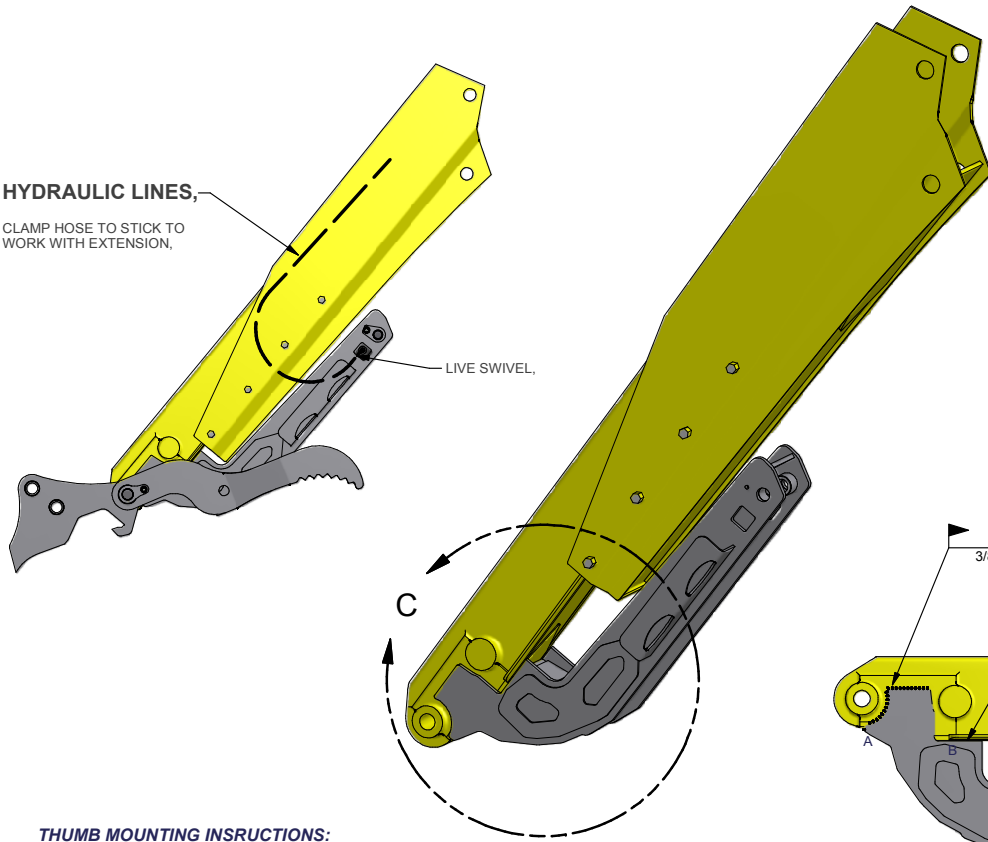


DETAIL A

DETAIL B

Date	Serial Number	UNLESS OTHERWISE SPECIFIED TOLERANCE ON DIMENSIONS ARE AS FOLLOWS	REV. A	Material:	
Approved By :		x/16(Fractional)..... 1/32 0.001(2 DECIMAL)..... 0.02 0.0001(3 DECIMAL)..... 0.005 Angles..... ±1°	Title: Complete Assembly		
		Date: 7/21/2008	Part # EX-TES-060-B95-01-A-		
		Qty. -----	Scale 1:15	DSN BY: Dwight	Dwn. By Dwight

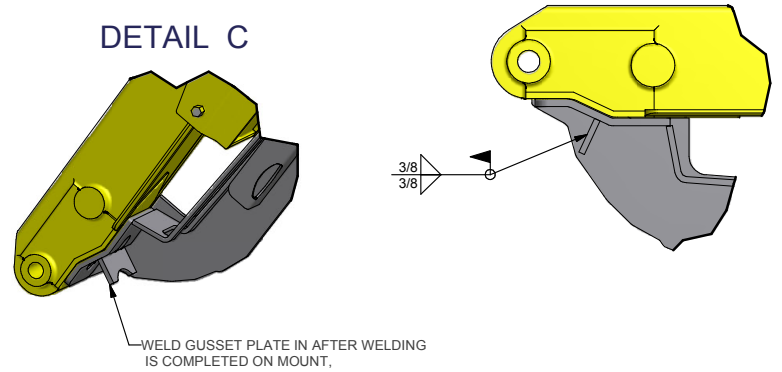
HYDRAULIC LINES,
CLAMP HOSE TO STICK TO
WORK WITH EXTENSION,



LIVE SWIVEL.

-SIDE PLATE MISSING FOR BETTER VISIBLITLY,

DETAIL C



WELD GUSSET PLATE IN AFTER WELDING
IS COMPLETED ON MOUNT.

3/8

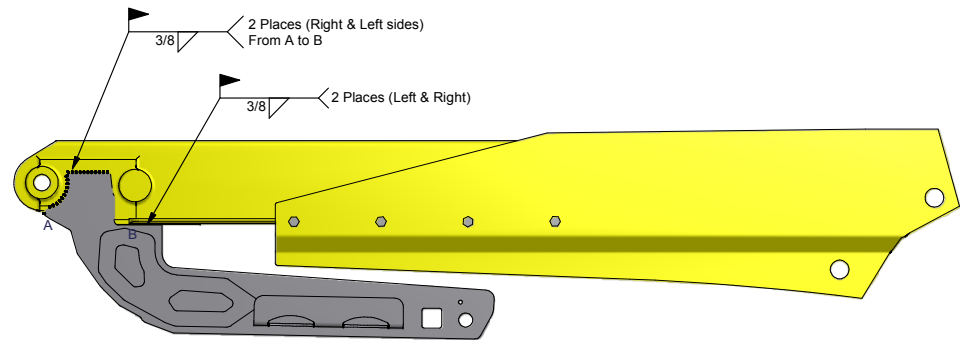
THUMB MOUNTING INSRUCTIONS:

-PLACE CYLINDER MOUNT, BEFORE WELDING MOUNT ON
INSTALL THUMB & CYLINDER, CHECK ROTATION OF THUMB
MAKE SURE THERE IS NO INTERFERES WITH MOUNT,

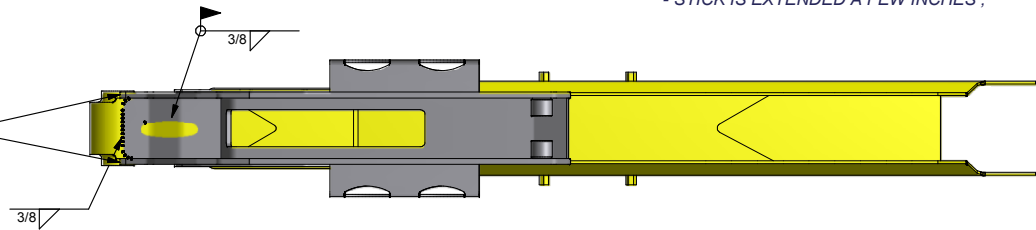
-IF NO INTERFERS IS FOUND THEN PROCEED
WITH WELDING ON THUMB MOUNT

-MAY HAVE TO NOTCH GUSSETS ON NEW HOLLAND
STYLE BUCKET, FOR THUMB TINES AND ALSO INSIDE
GUSSET FOR WELD ON MOUNT,

MUST CLAMP END OF SIDE PLATES IN
AGAINST THE STICK BEFORE WELDING,



- STICK IS EXTENDED A FEW INCHES ,



3/8