

Heredogramas e Gemelaridade

Prof. Alison
Biologia

Heredogramas

Os heredogramas ou as genealogias constituem uma forma bastante usual, em genética, de representar uma família.

 → HOMEM NORMAL

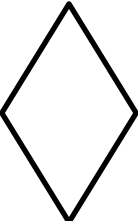
 → MULHER NORMAL

 → HOMEM AFETADO

 → MULHER AFETADA

 → CRUZAMENTO

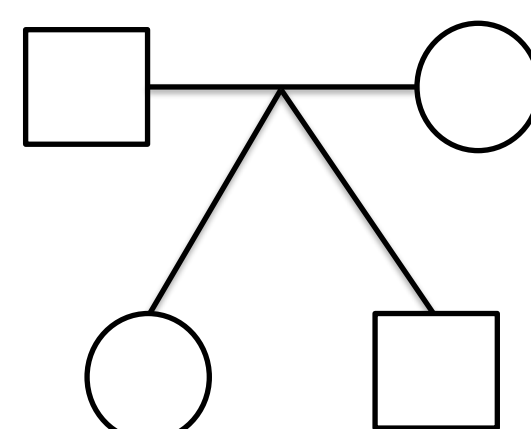
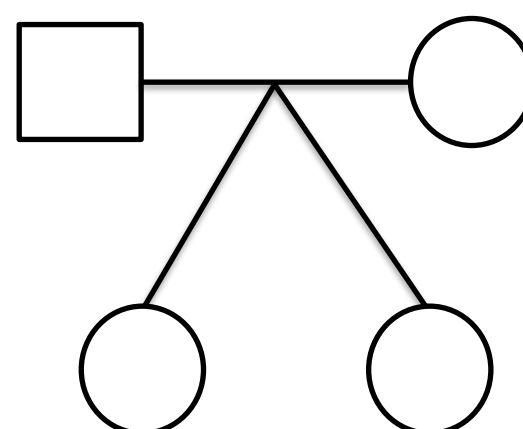
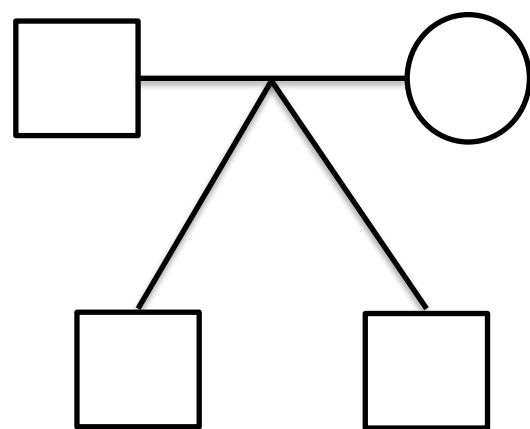
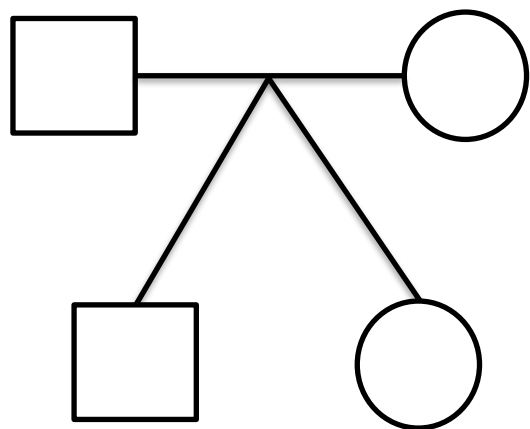
 → CRUZAMENTO
CONSANGUÍNEO

 → SEXO NÃO
INFORMADO

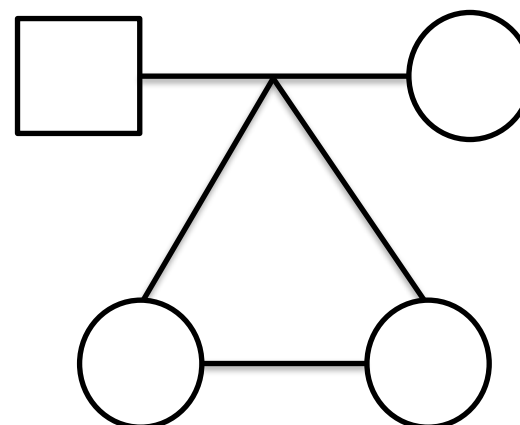
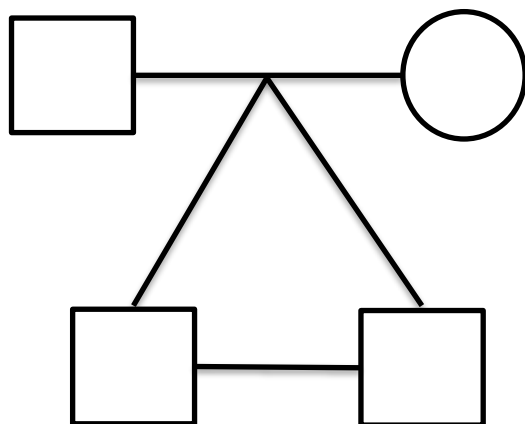
 → FÊMEA PORTADORA DE
GENE LIAGADO AO X

Heredogramas

GÊMEOS DIZIGÓTICOS/BIVITELINOS/FRATERNOS OU FALSOS

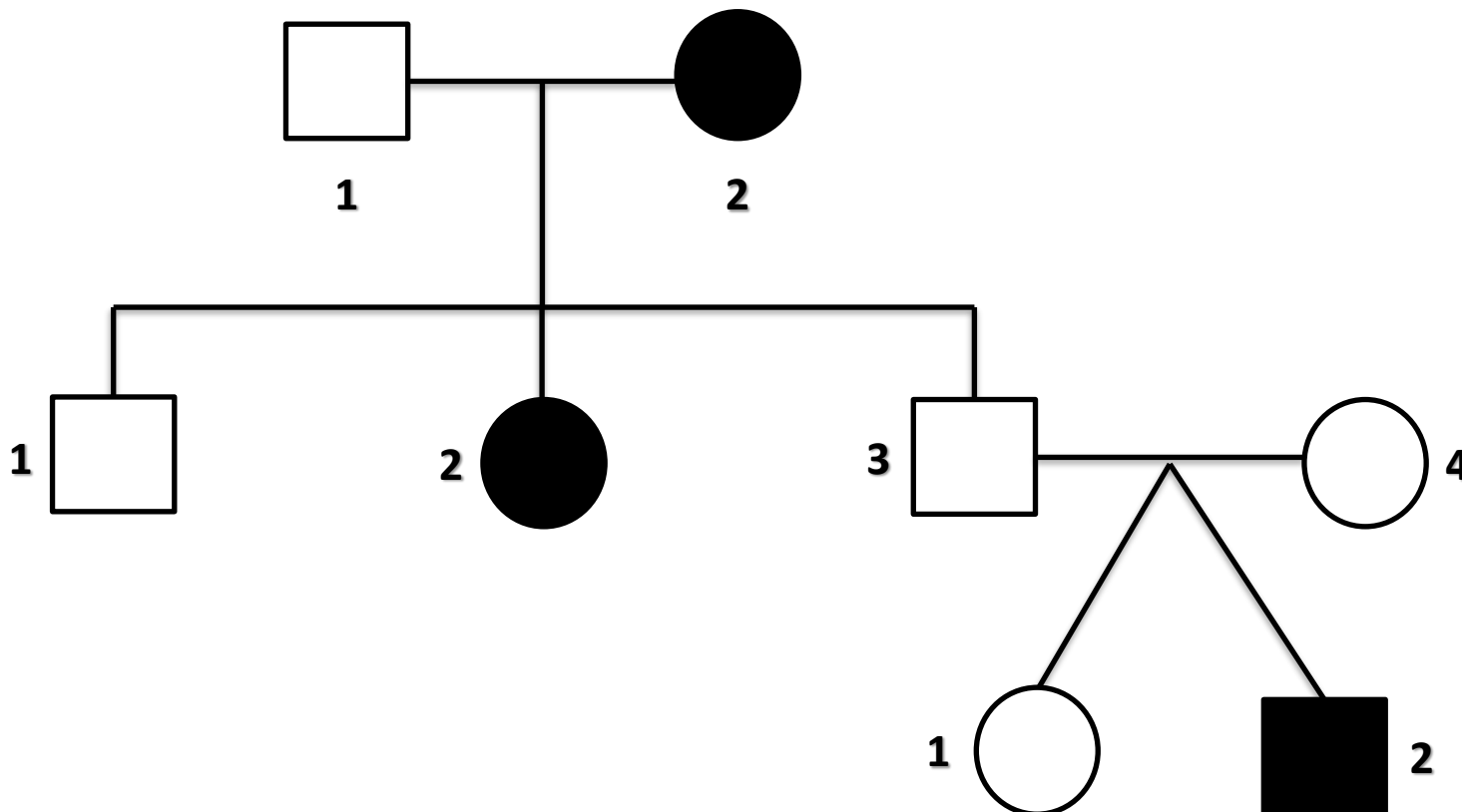


GÊMEOS MONOZIGÓTICOS OU UNIVITELINOS

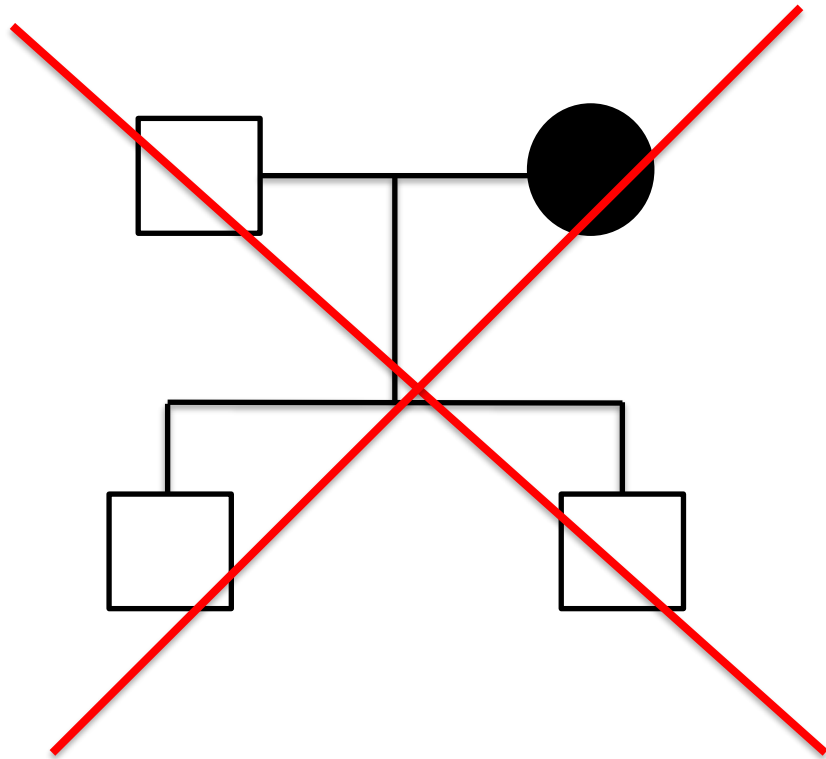


Montando um heredogramas

Um homem normal, casado com uma mulher afetada por uma doença genética, teve três filhos. O primeiro foi um homem normal; o segundo, uma mulher afetada pela mesma doença de sua mãe. O terceiro foi um homem normal. Esse terceiro filho casou-se com uma mulher normal e teve dois filhos gêmeos dizigóticos. Um dos filhos é uma menina normal e o outro, um menino afetado.

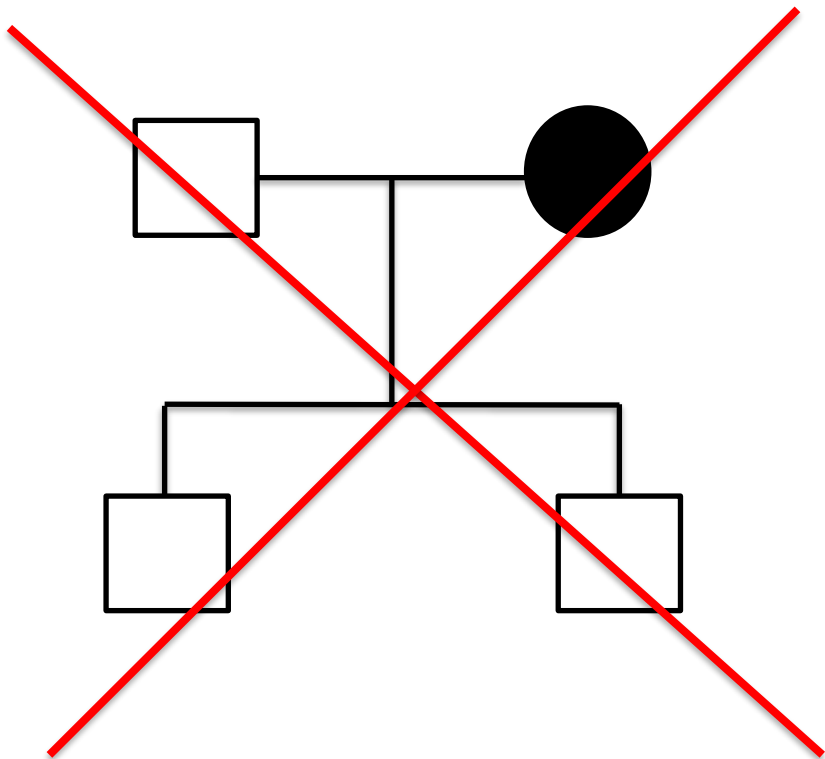


Heredogramas

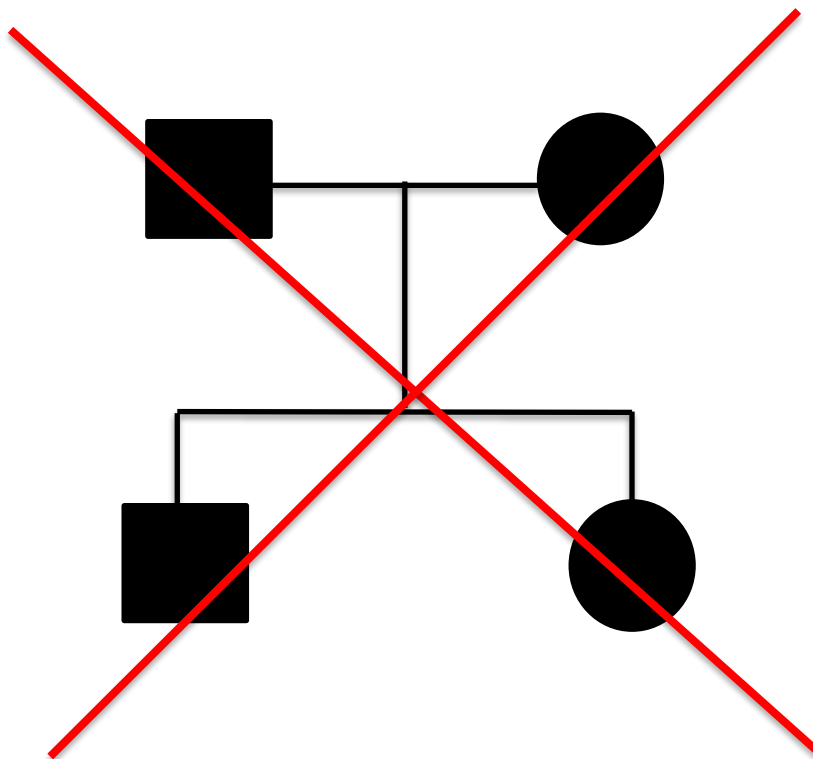


CASO 1

Heredogramas

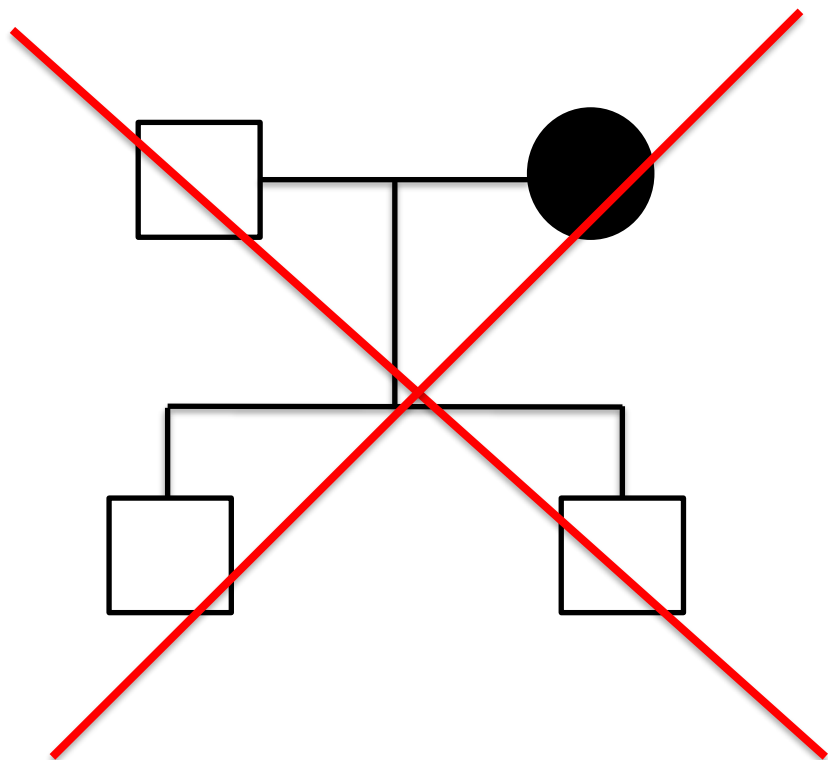


CASO 1

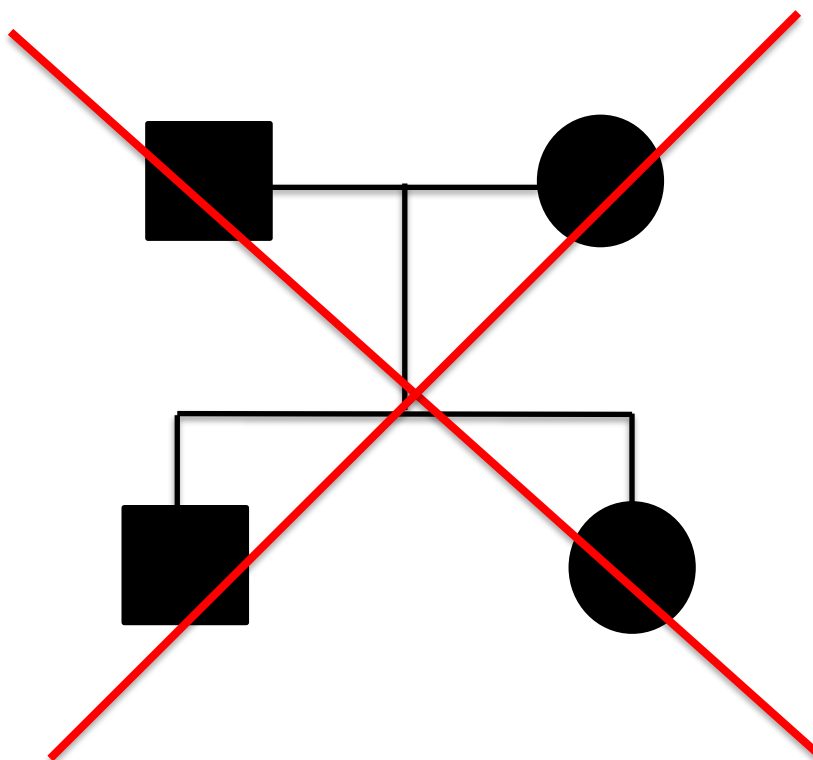


CASO 2

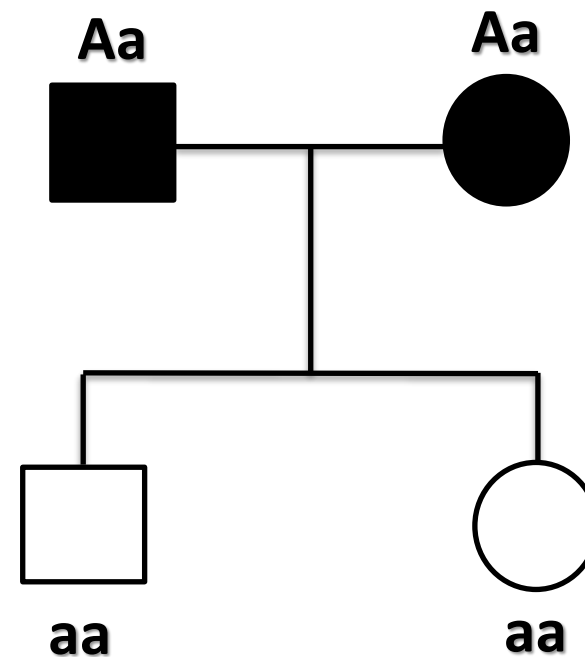
Heredogramas



CASO 1

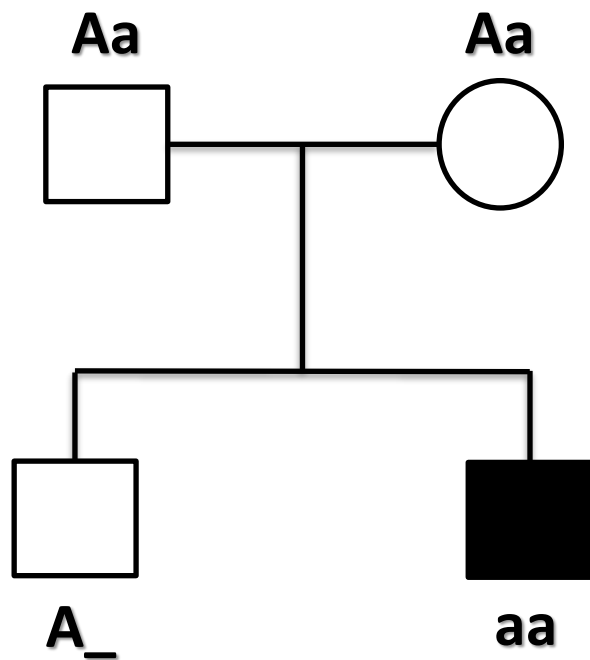


CASO 2

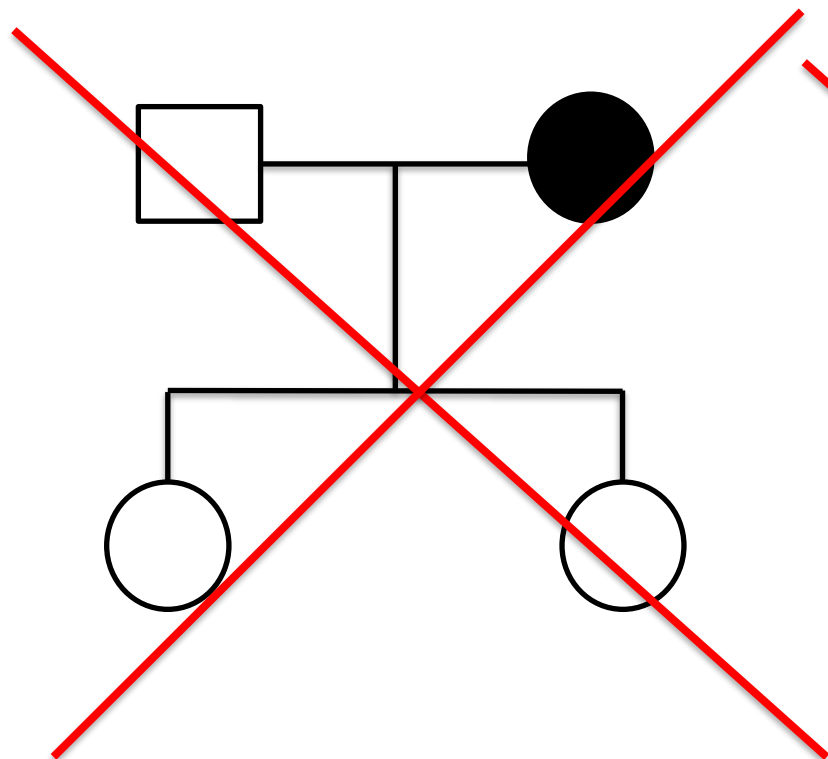


CASO 3

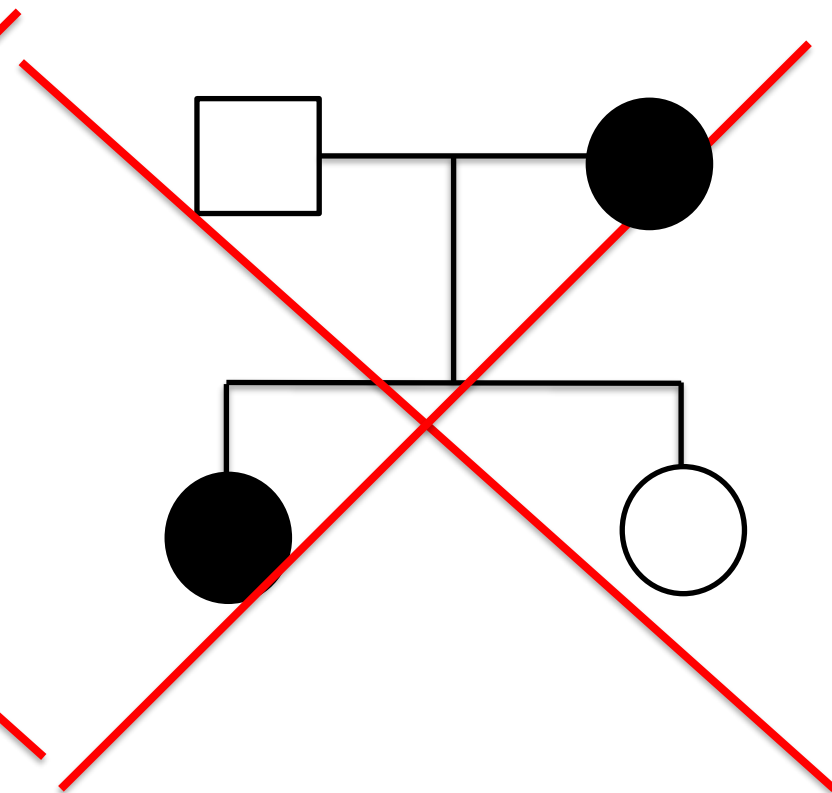
Heredogramas



CASO 4

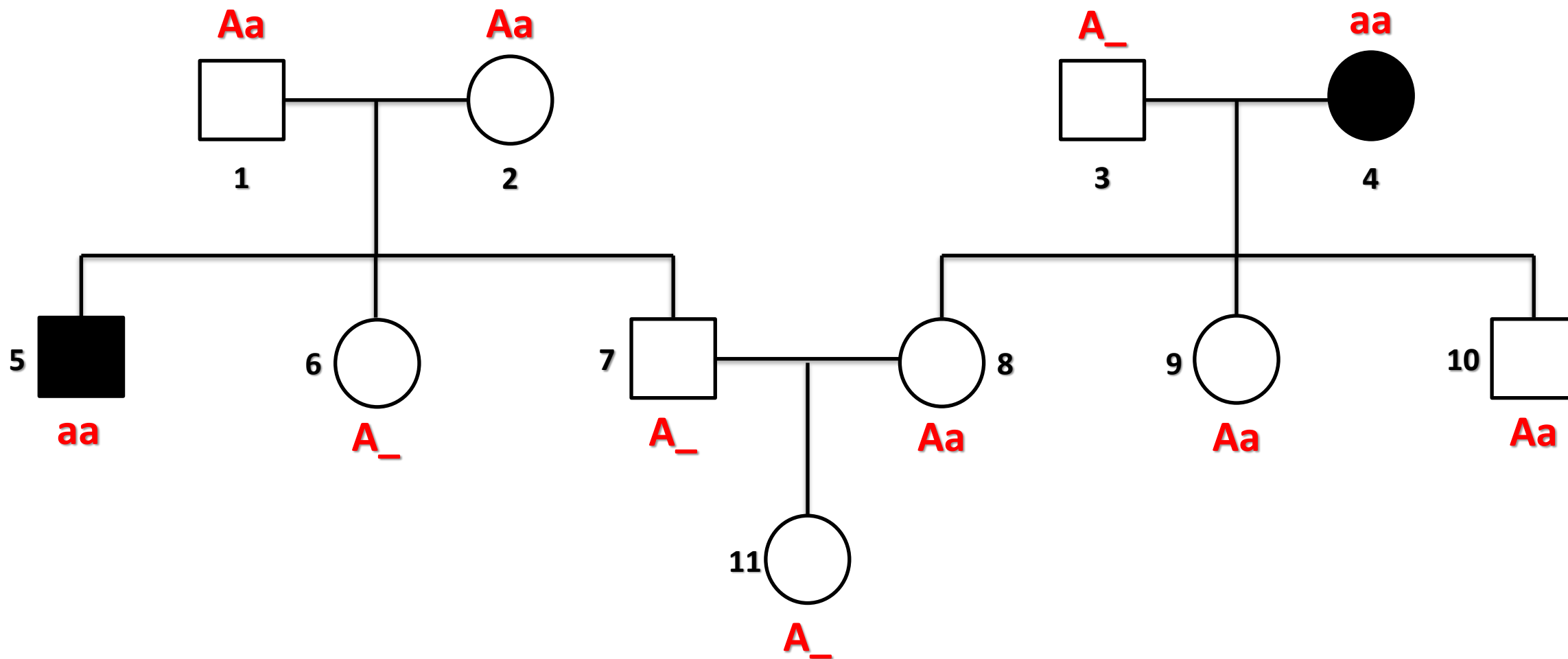


CASO 5



CASO 6

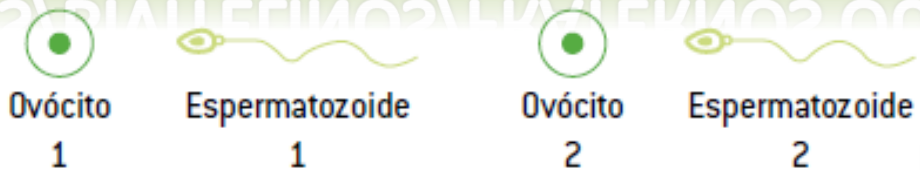
Heredogramas



Gemelaridade

GÊMEOS DIZIGÓTICOS/BIVITELINOS/FRATERNOS OU FALSOS

POLIOVULAÇÃO

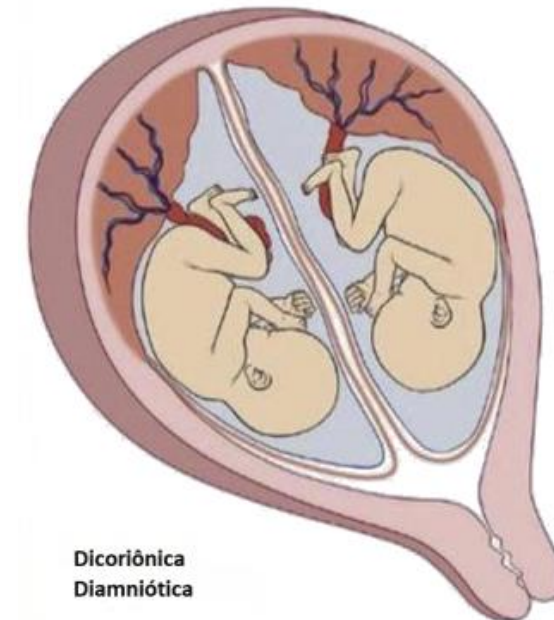


Zigoto 1

Zigoto 2



Indivíduos do mesmo sexo
ou de sexo diferente



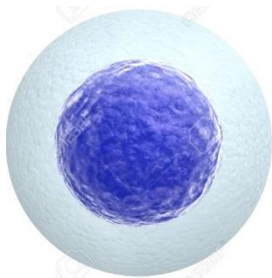
Dicoriônica
Diamniótica

2 placentas
2 bolsas amnióticas

Gemelaridade

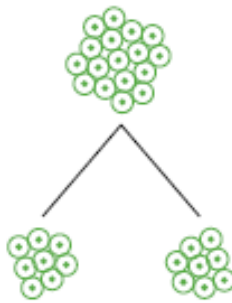
GÊMEOS MONOZIGÓTICOS OU UNIVITELINOS

POLIEMBRIONIA

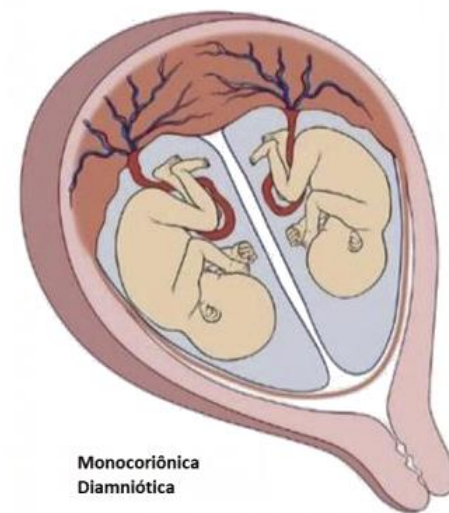


Ovócito Espermatozoide

Zigoto

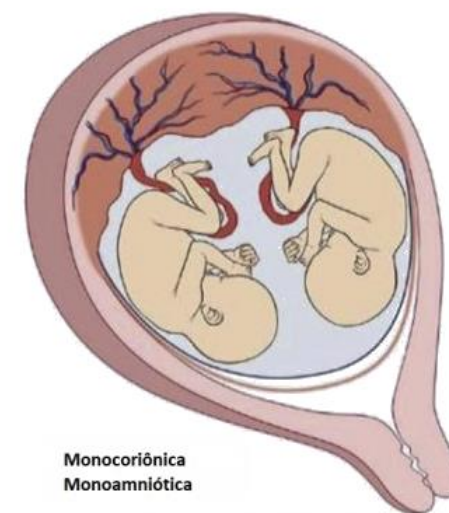


Indivíduos obrigatoriamente do mesmo sexo



Monocoriônica
Diamniótica

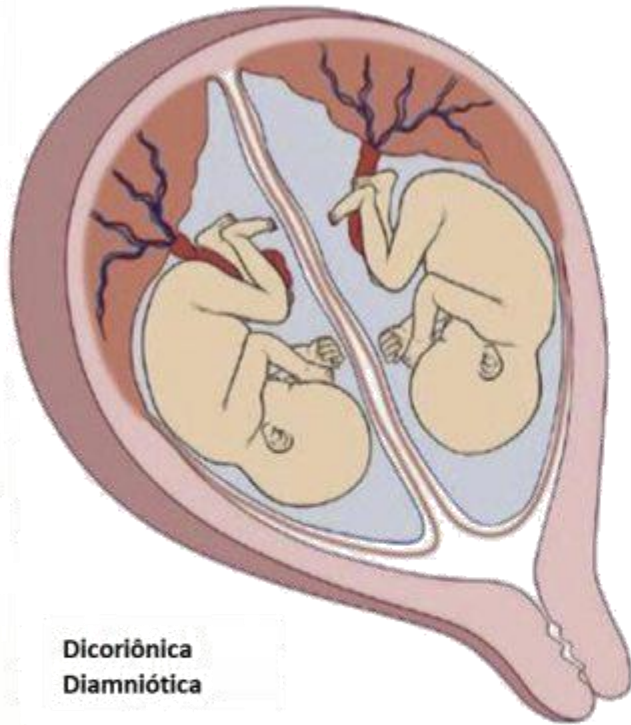
1 placenta
2 bolsas amnióticas



Monocoriônica
Monoamniótica

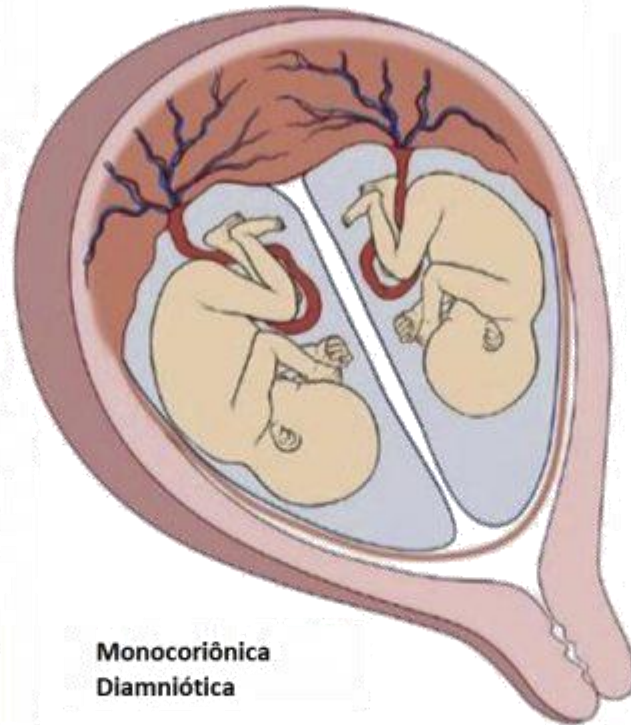
1 placenta
1 bolsa amniótica

Gemelaridade



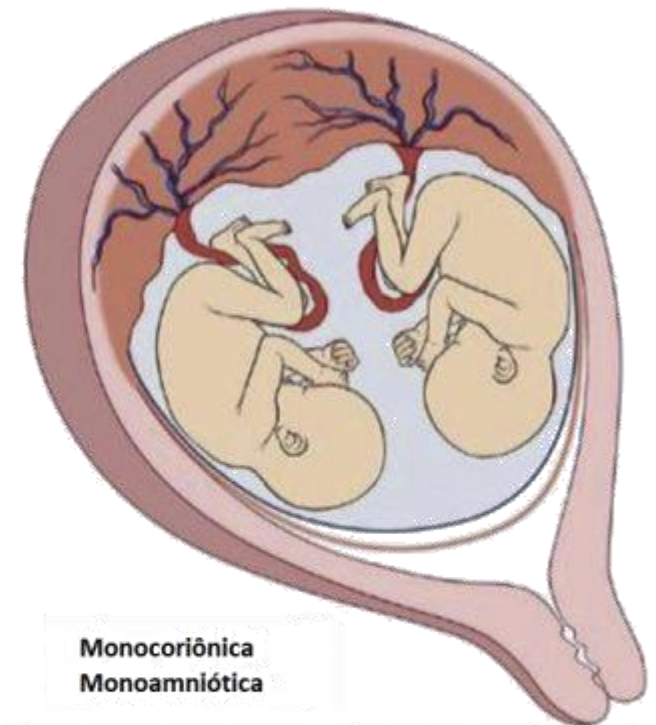
Dicoriónica
Diamniótica

2 placentas
2 bolsas amnióticas



Monocoriónica
Diamniótica

1 placenta
2 bolsas amnióticas



Monocoriónica
Monoamniótica

1 placenta
1 bolsa amniótica

OBRIGADO!