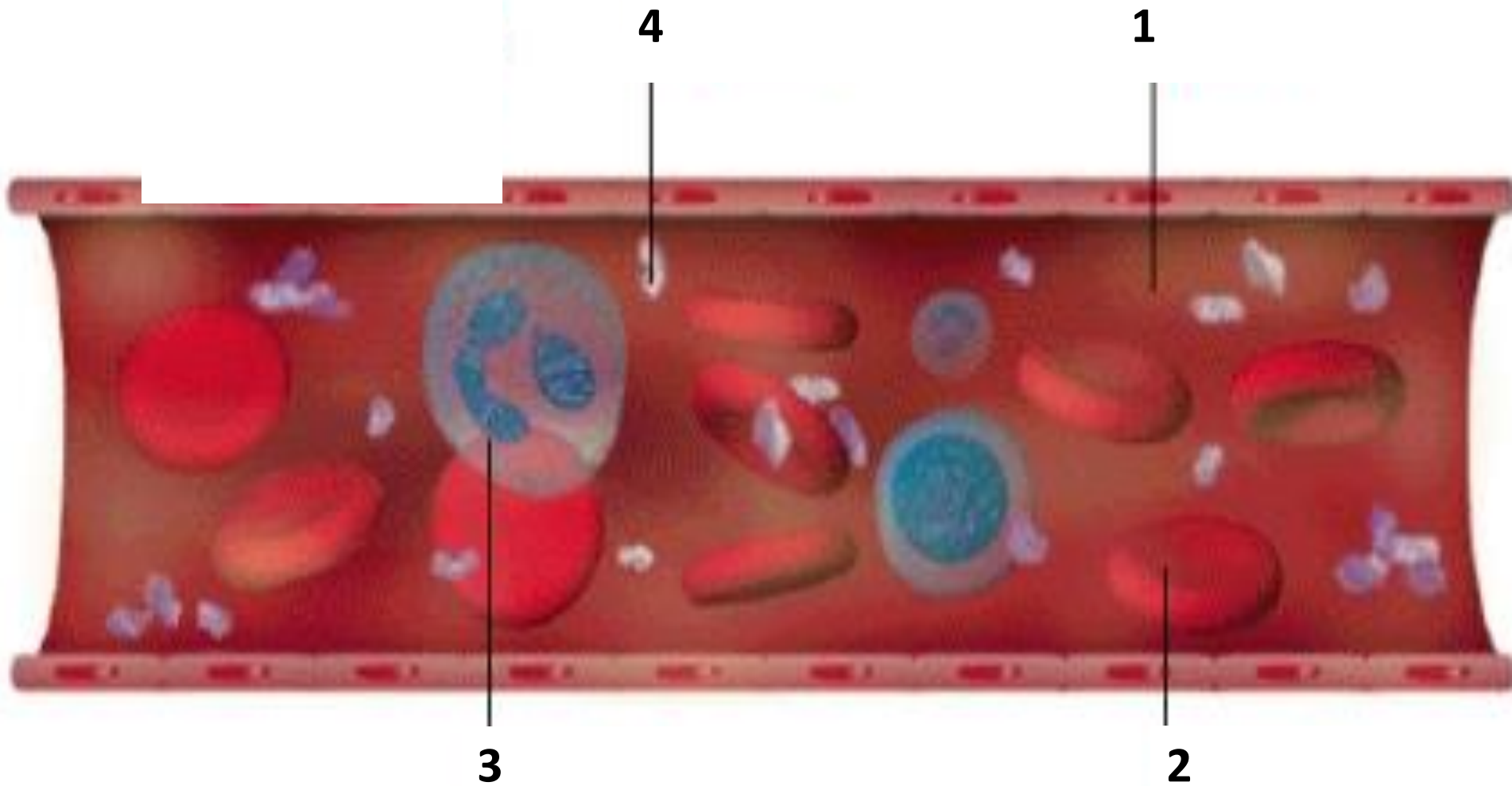


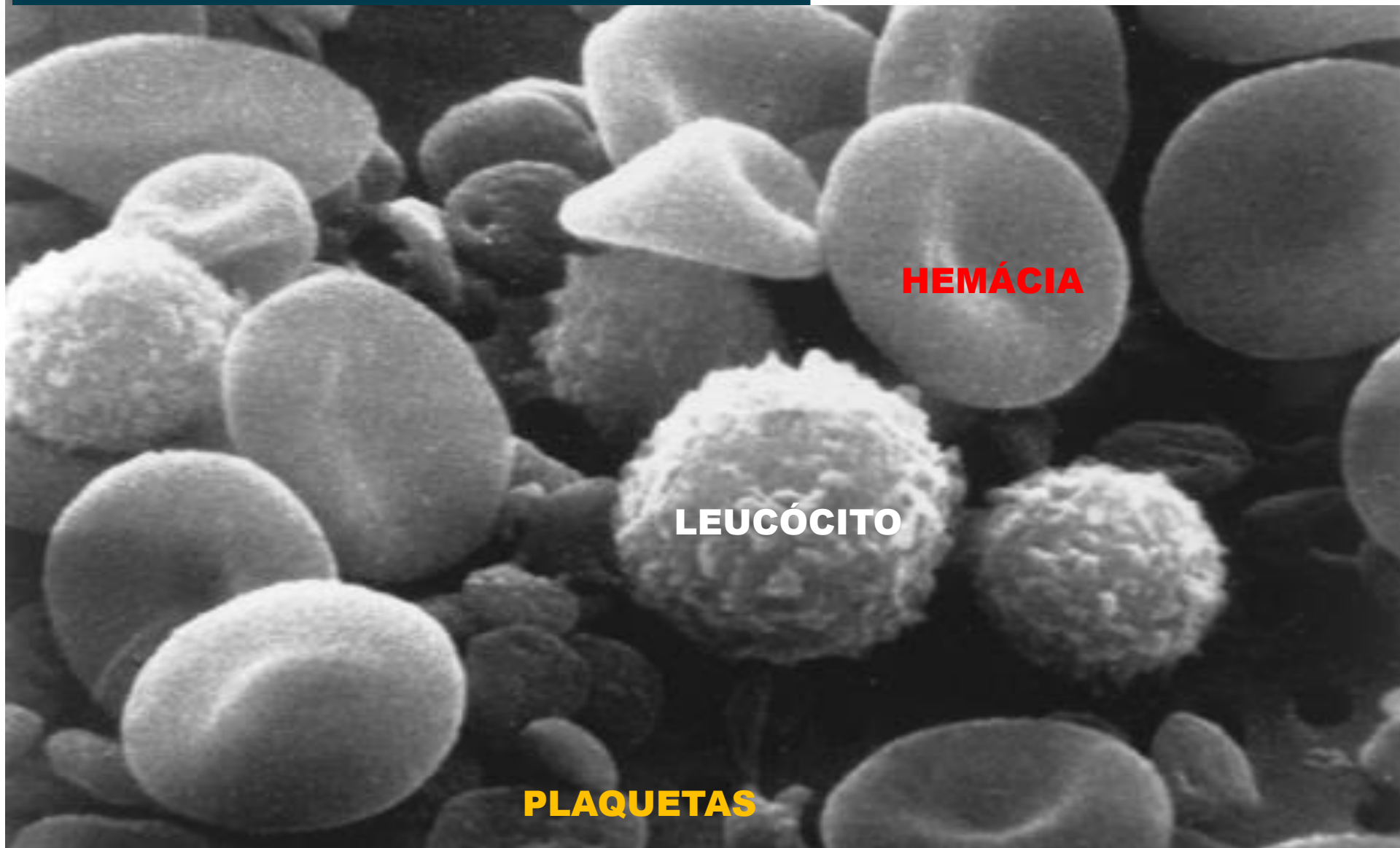
# COAGULAÇÃO E VASO SANGUÍNEO (SANGUE)

Prof. Hare  
BIOLOGIA

# SANGUE



# MICROGRAFIA – ELEMENTOS FIGURADOS



**HEMÁCIA**

**LEUCÓCITO**

**PLAQUETAS**

# TECIDO SANGUÍNEO

## ELEMENTOS FIGURADOS

**HEMÁCIAS** Transportam gases  
(ERITRÓCITOS)  
(glóbulos vermelhos)

**LEUCÓCITOS** Defesa **função?**  
(GLÓBULOS BRANCOS)

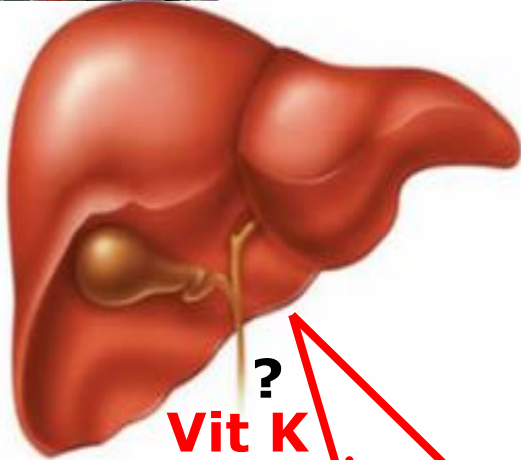
(fragmentos de megacariócitos)  
**PLAQUETAS** Coagulação  
(TROMBÓCITOS)  
FÍSICA (obstrução por plaquetas)  
QUÍMICA (liberação de fatores da coagulação)

# Coagulação Sanguínea



(Fator III)

**TROMBOPLASTINA**



?  
**Vit K**

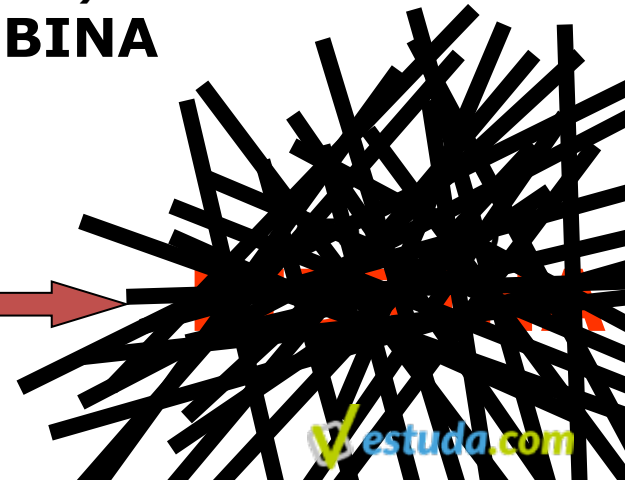
**Ca**



(Fator II)  
**PROTROMBINA**

(Fator IIa)  
**TROMBINA**

(Fator I)  
**FIBRINOGENÍO**

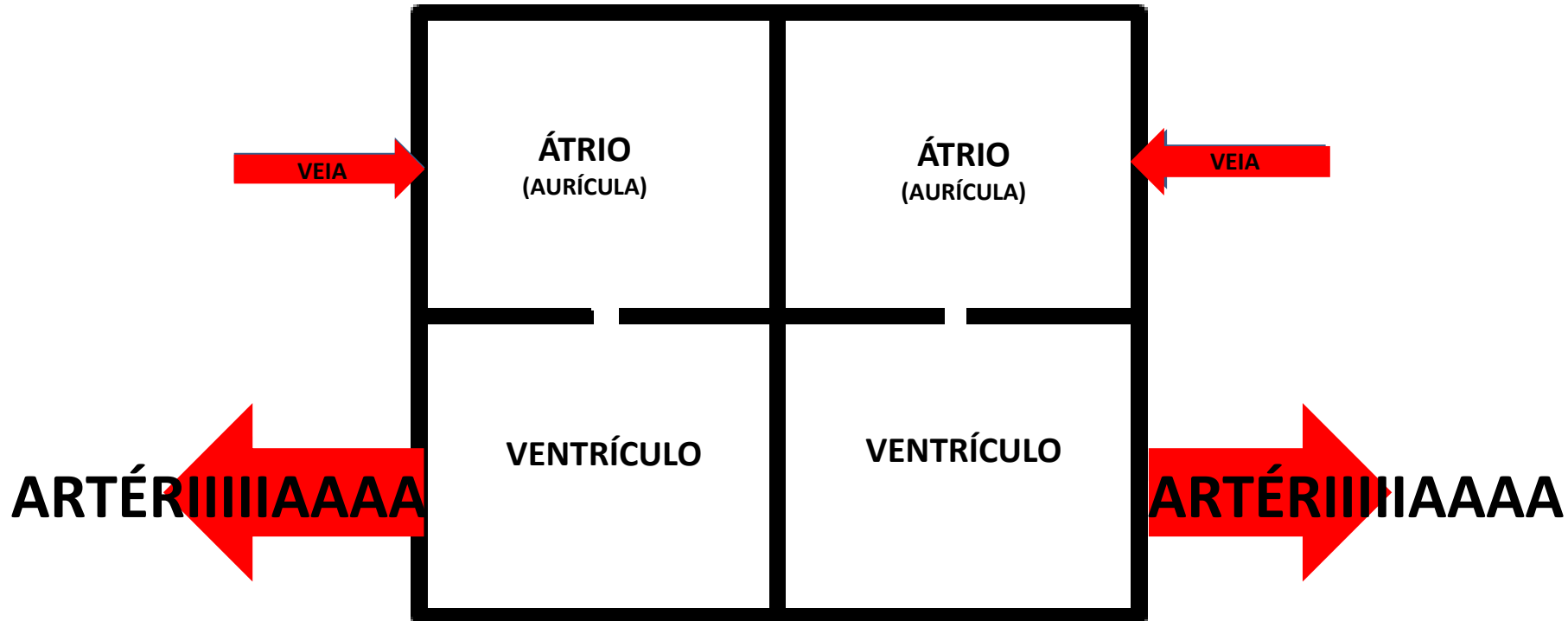


# CORAÇÃO HUMANO

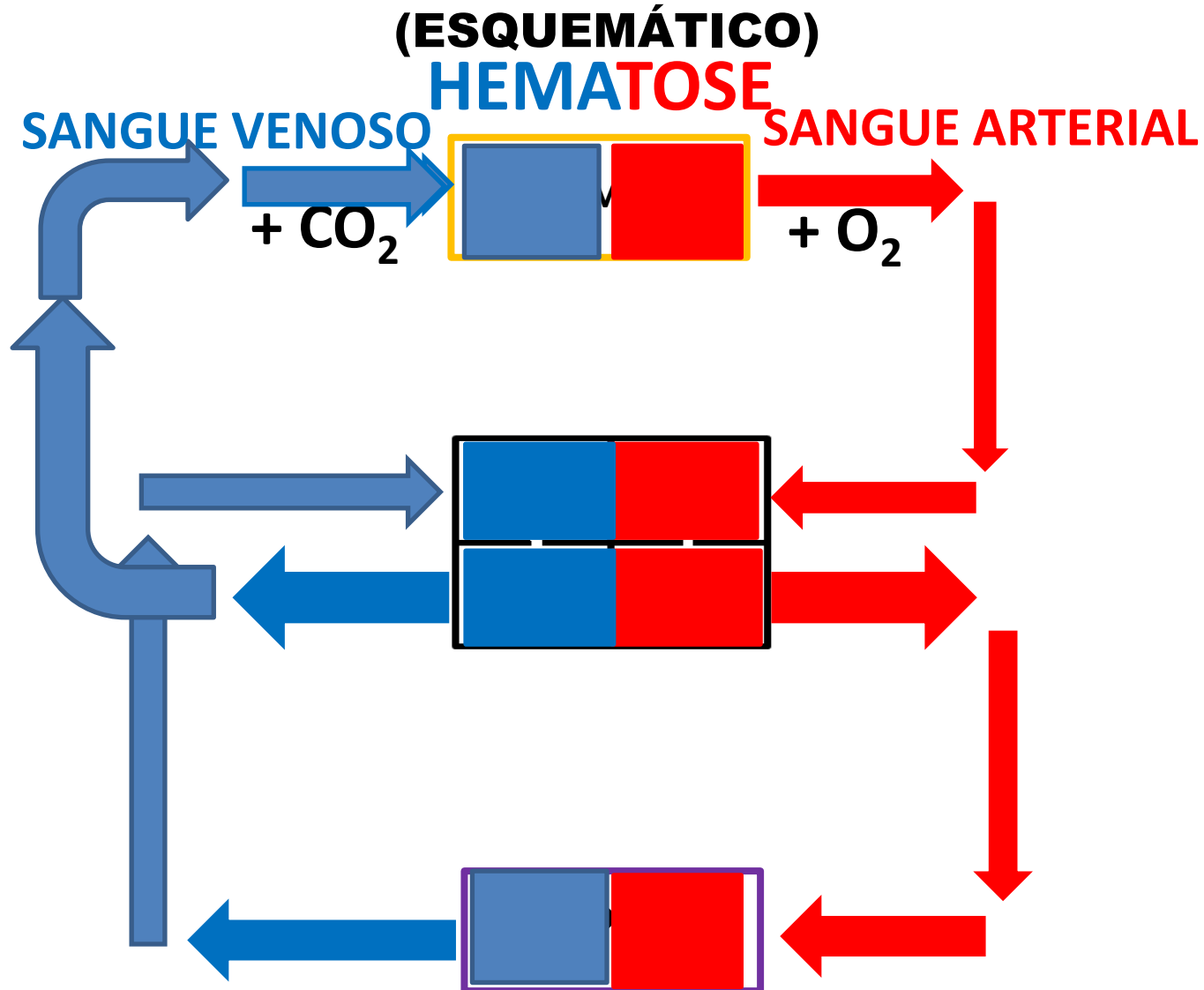
## (ESQUEMÁTICO)

DIREITO

ESQUERDO

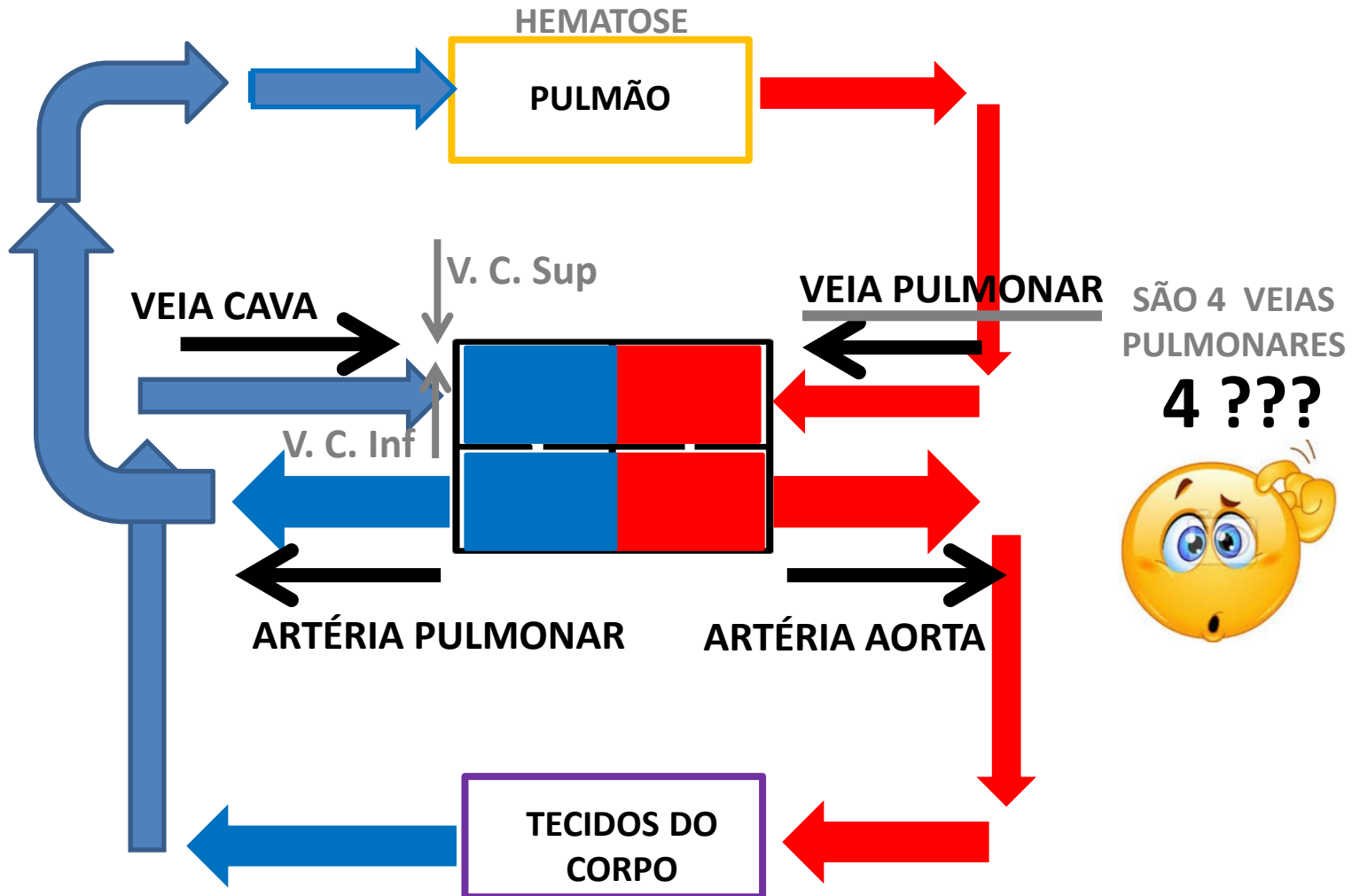


# CIRCULAÇÃO HUMANA



# CIRCULAÇÃO HUMANA

(ESQUEMÁTICO)



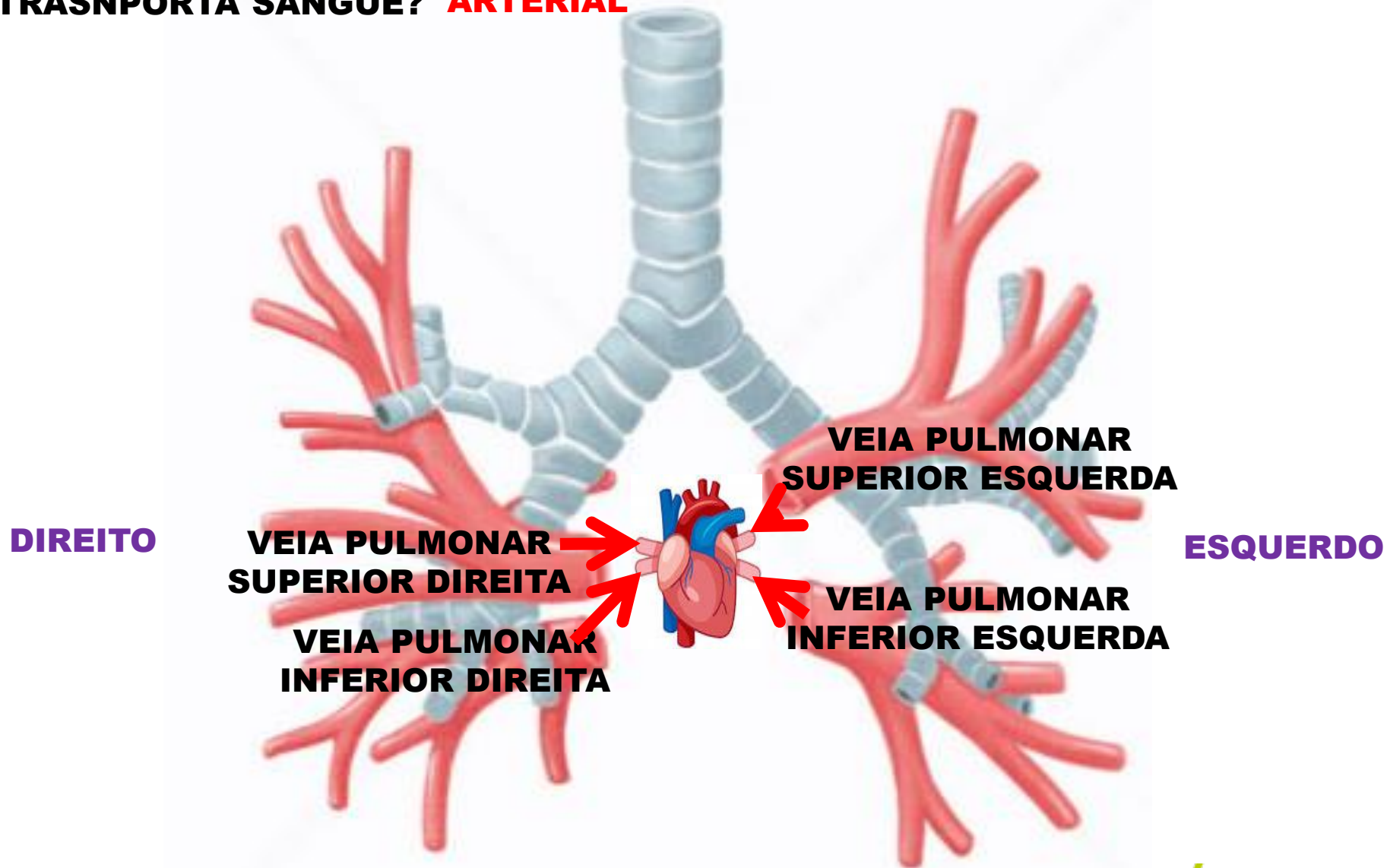
SÃO 4 VEIAS PULMONARES  
4 ???





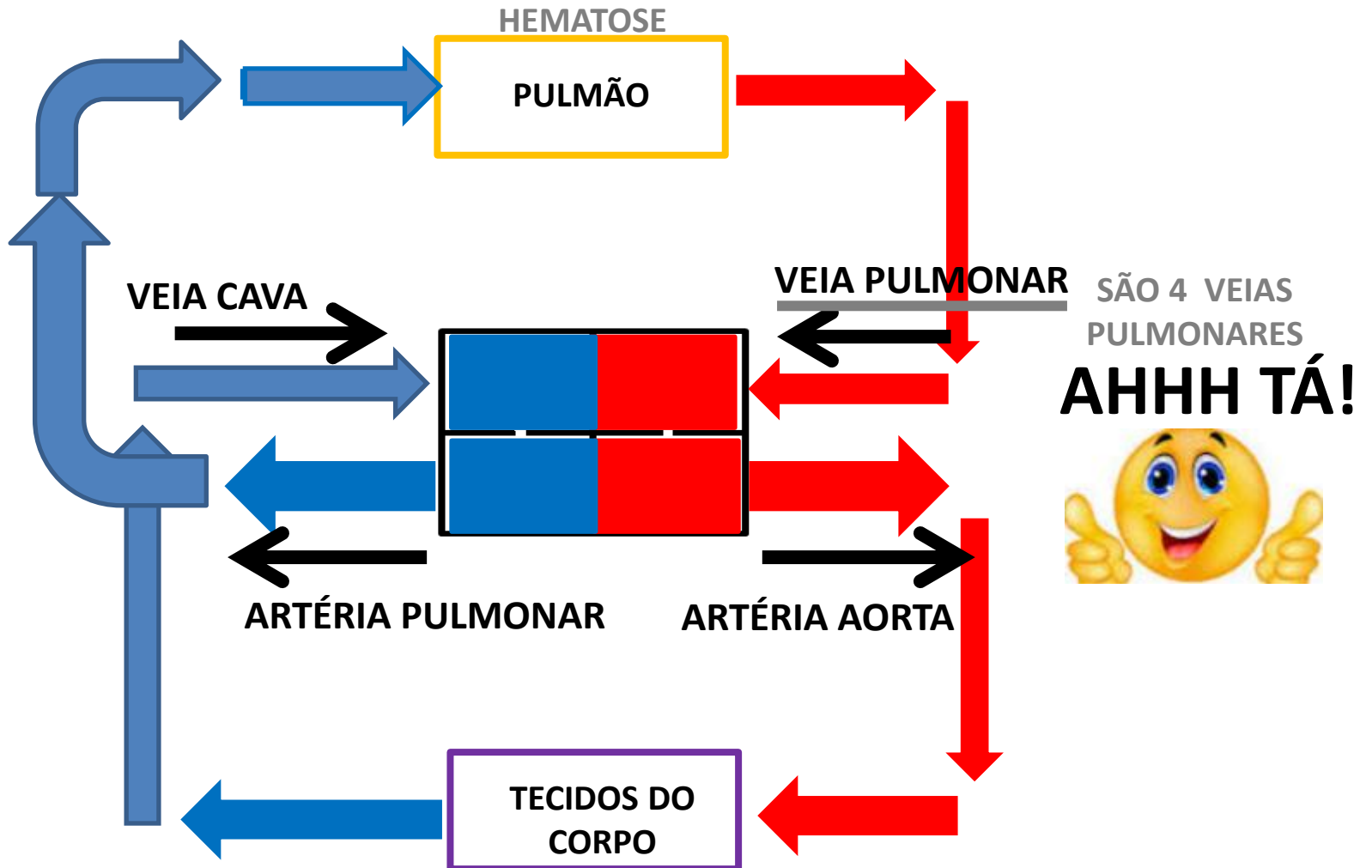
# VEIAS PULMONARES

TRANSPORTA SANGUE? **ARTERIAL**

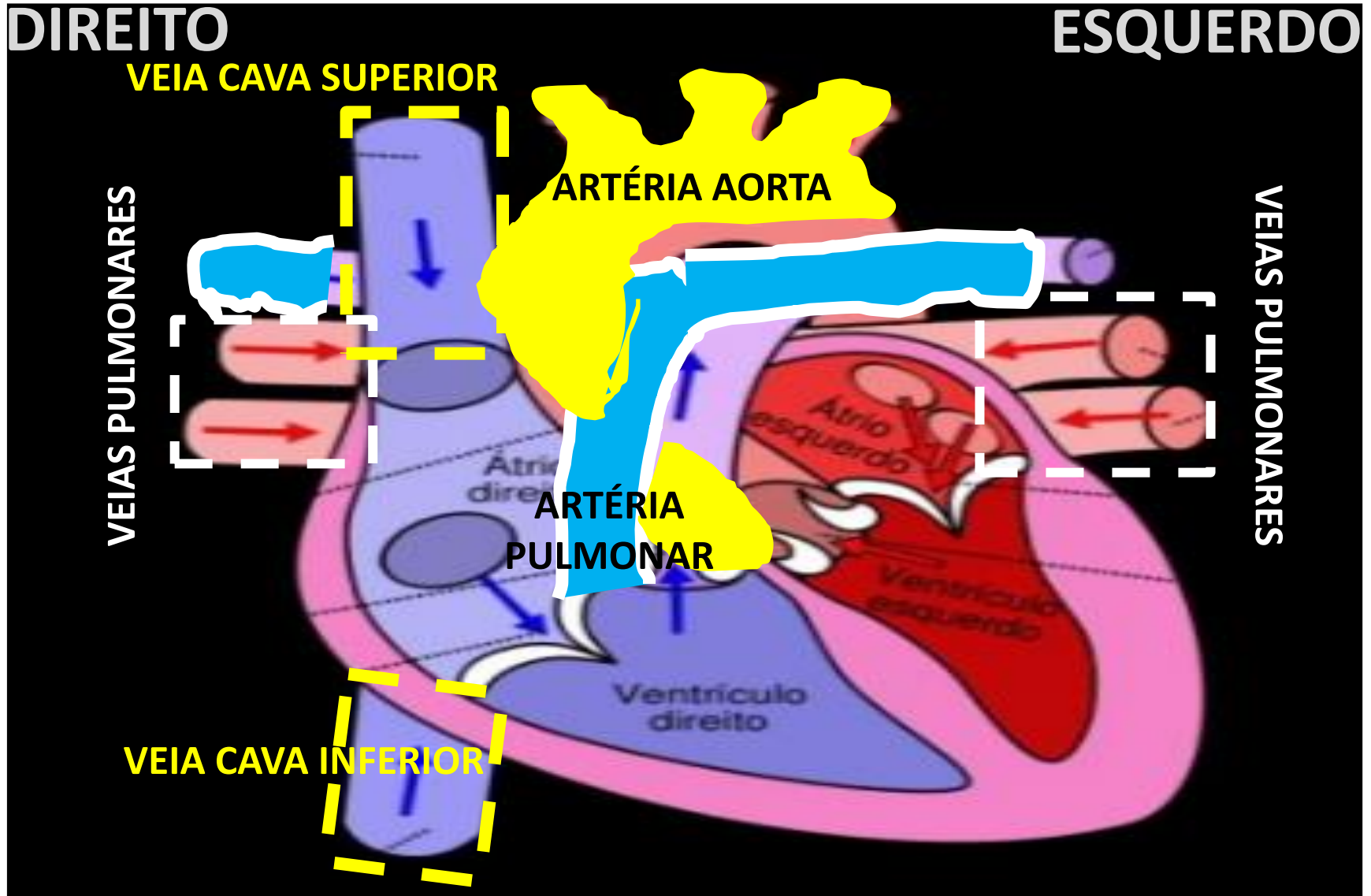


# CIRCULAÇÃO HUMANA

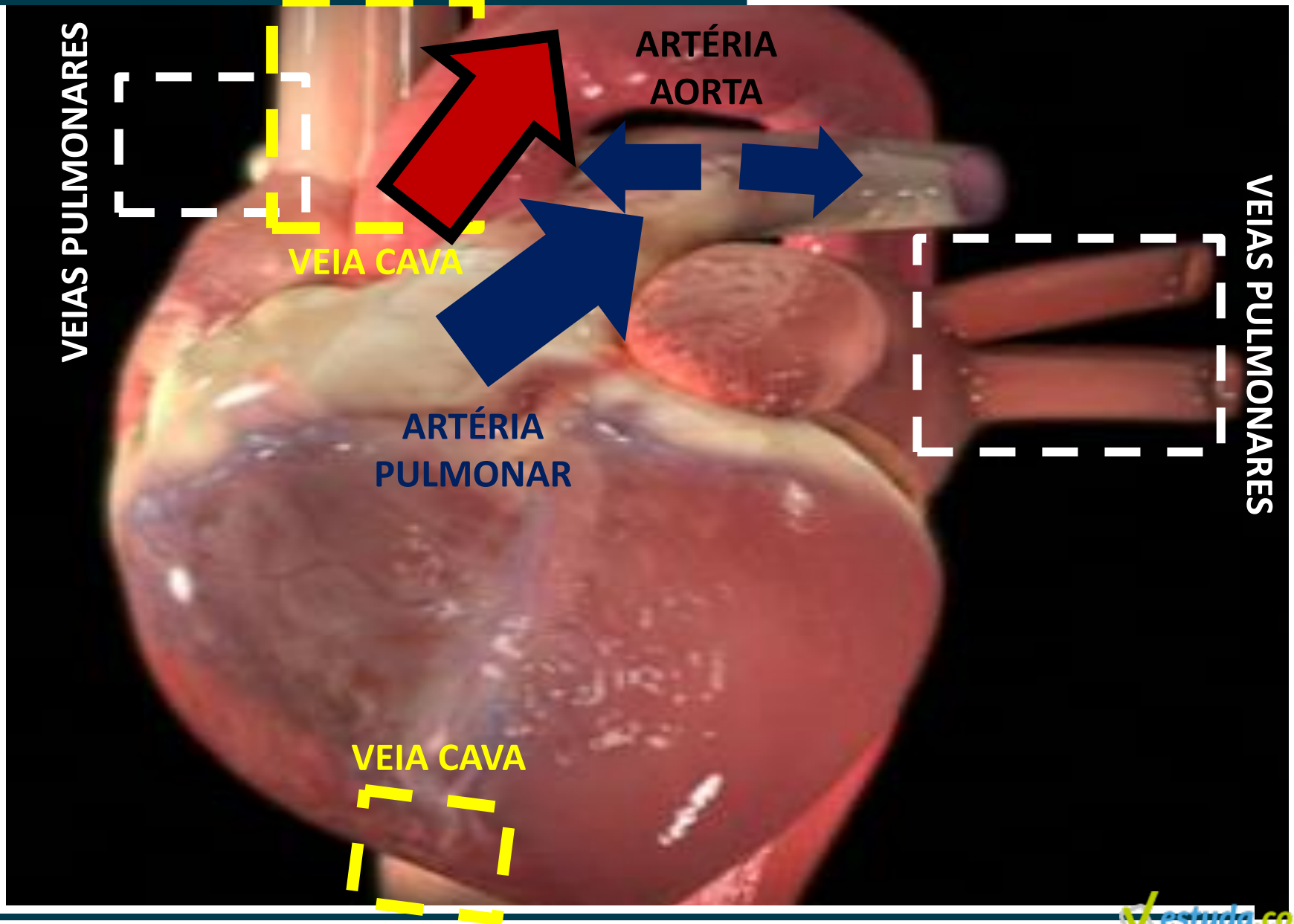
(ESQUEMÁTICO)



# CIRCULAÇÃO HUMANA

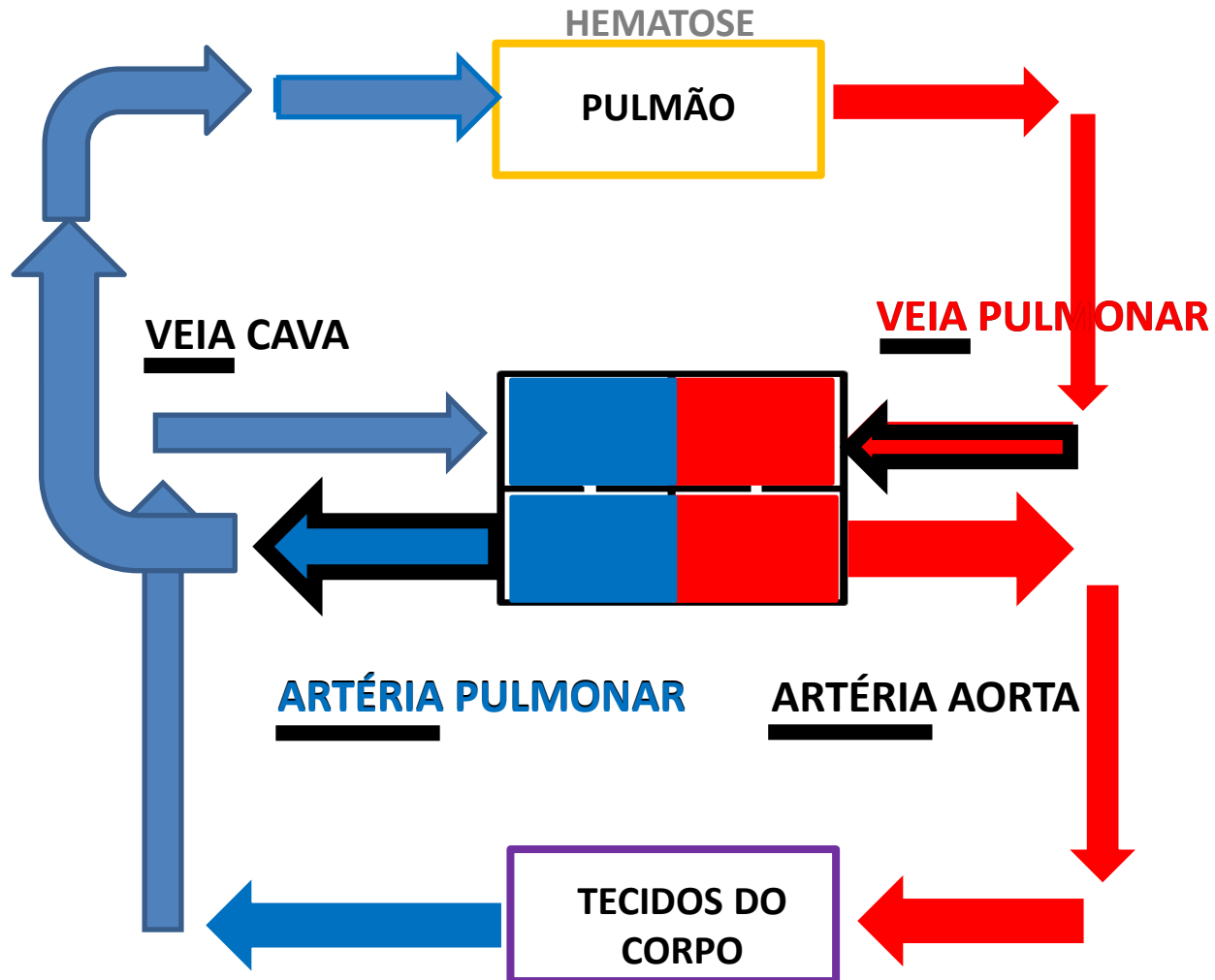


# CORAÇÃO HUMANO REAL



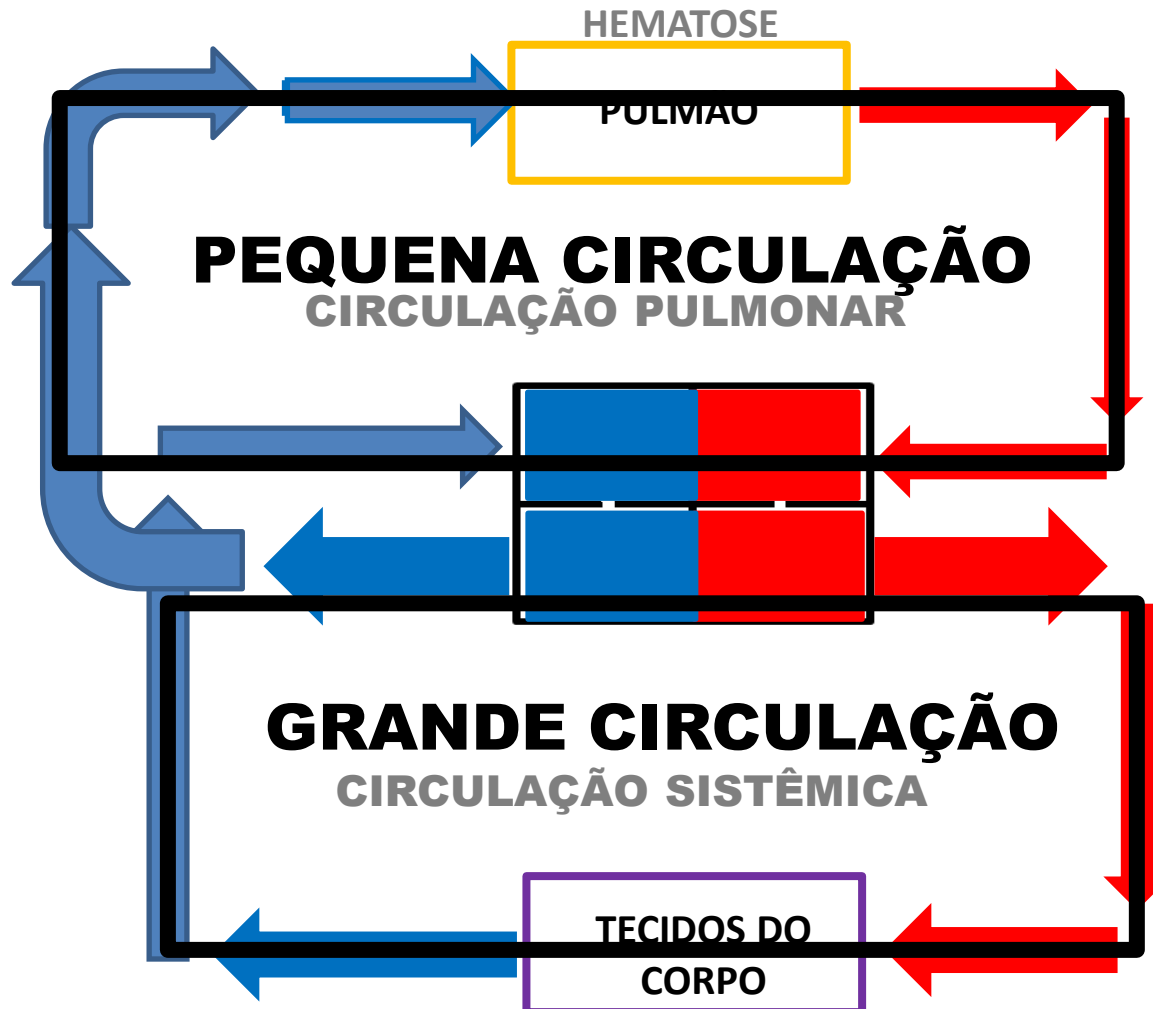
# VASOS – TIPO DE SANGUE

(ESQUEMÁTICO)



# CIRCULAÇÃO HUMANA

(“CLASSIFICAÇÃO DIDÁTICA”)



# VASOS – TIPO DE SANGUE

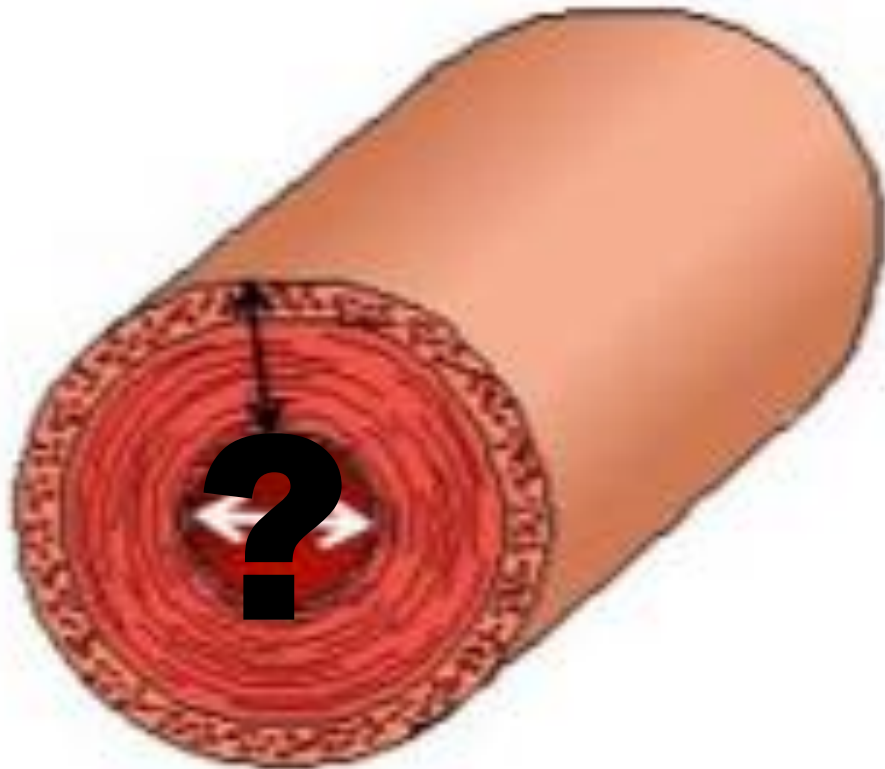
**ARTÉRIA** → **PASSA SANGUE ARTERIAL**  
EXCETO: **ARTÉRIA PULMONAR**



**VEIA** → **PASSA SANGUE VENOSO**  
EXCETO: **VEIA PULMONAR**

# TIPOS DE VASO

## ARTÉRIA



## VEIA





# TIPOS DE VASO



**ARTÉRIA**

?

?

**VEIA**

espessura

**+ ESPESSA**

**+ DELGADA**

pulsação

**PULSA**

**NÃO PULSA**

pressão

**MAIOR**

**MENOR**

# ARTÉRIAS E VEIAS

(considerando o calibre)

