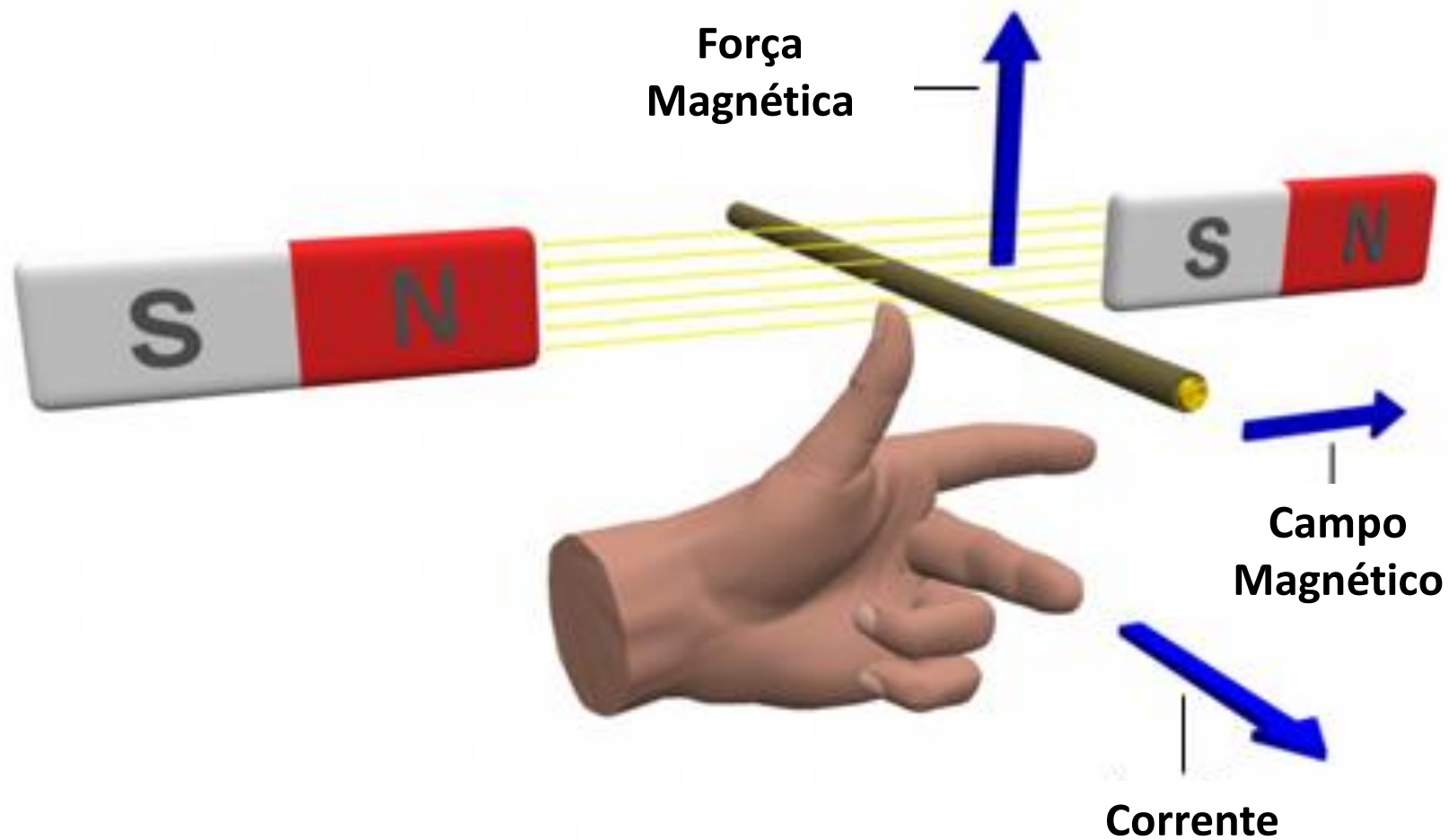


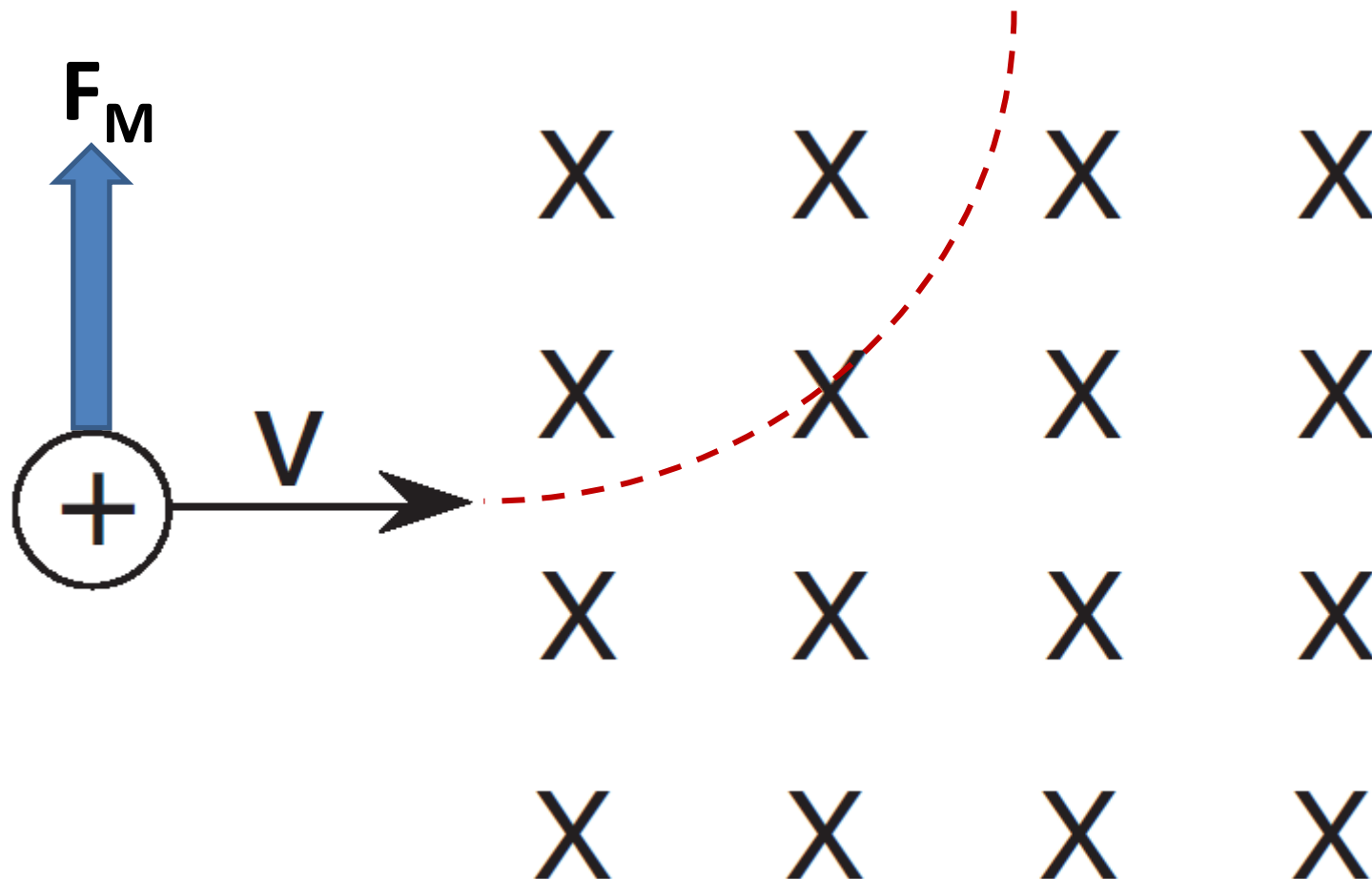
Força magnética sobre uma carga

Prof. Jadoski
Física

Força magnética

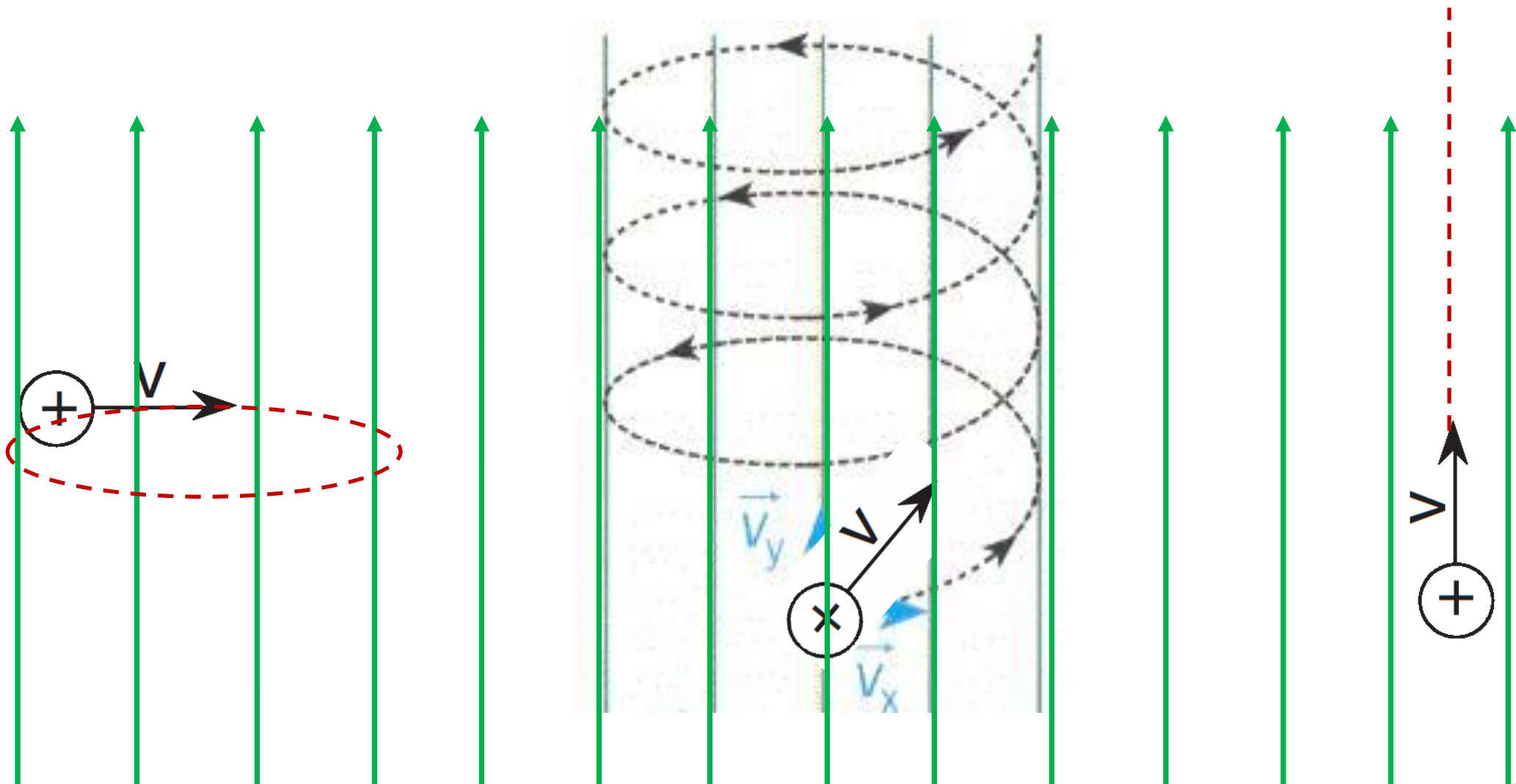


Força magnética

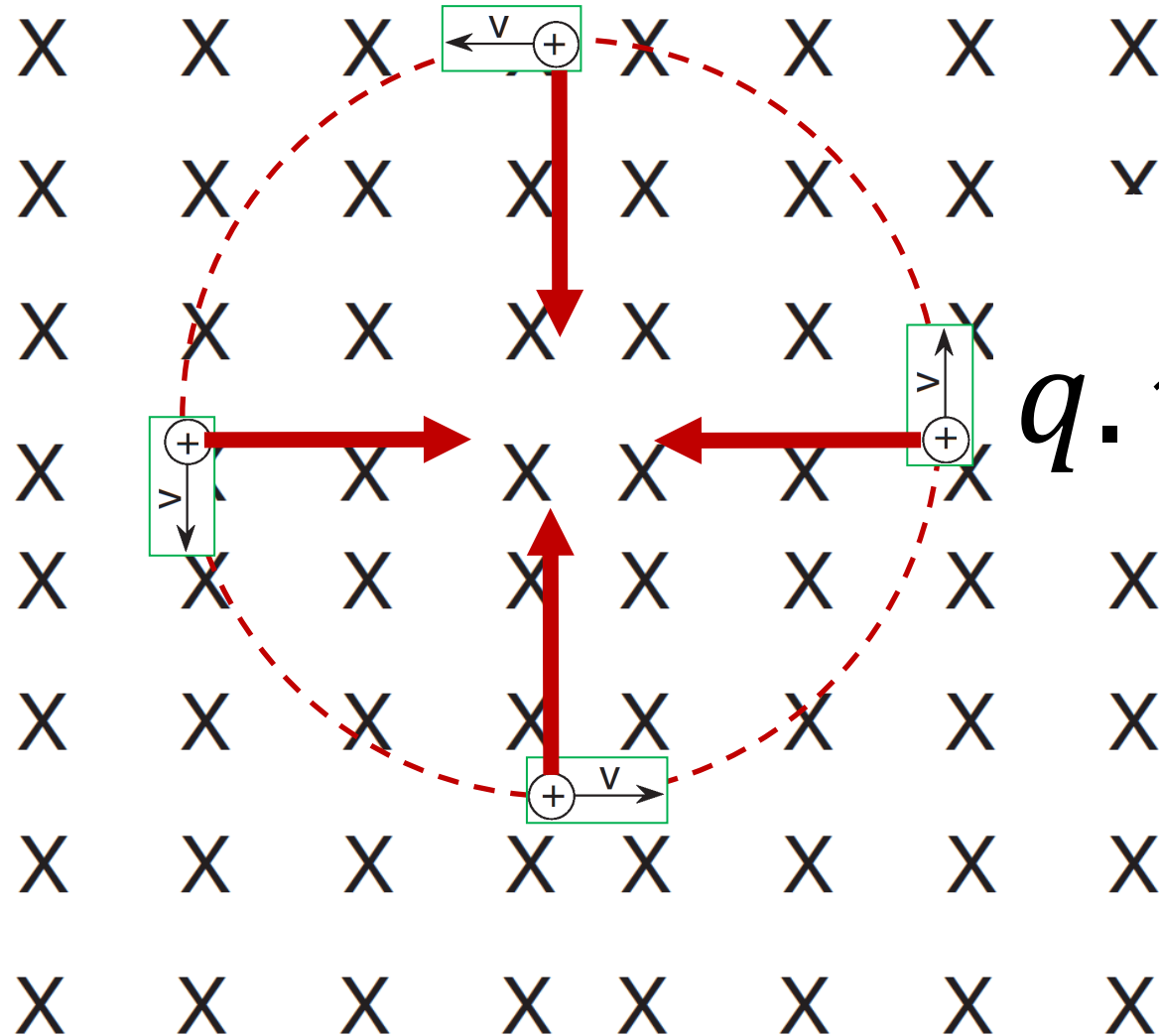


Força magnética

$$F_m = q.V.B.\text{sen}\theta$$



Força magnética

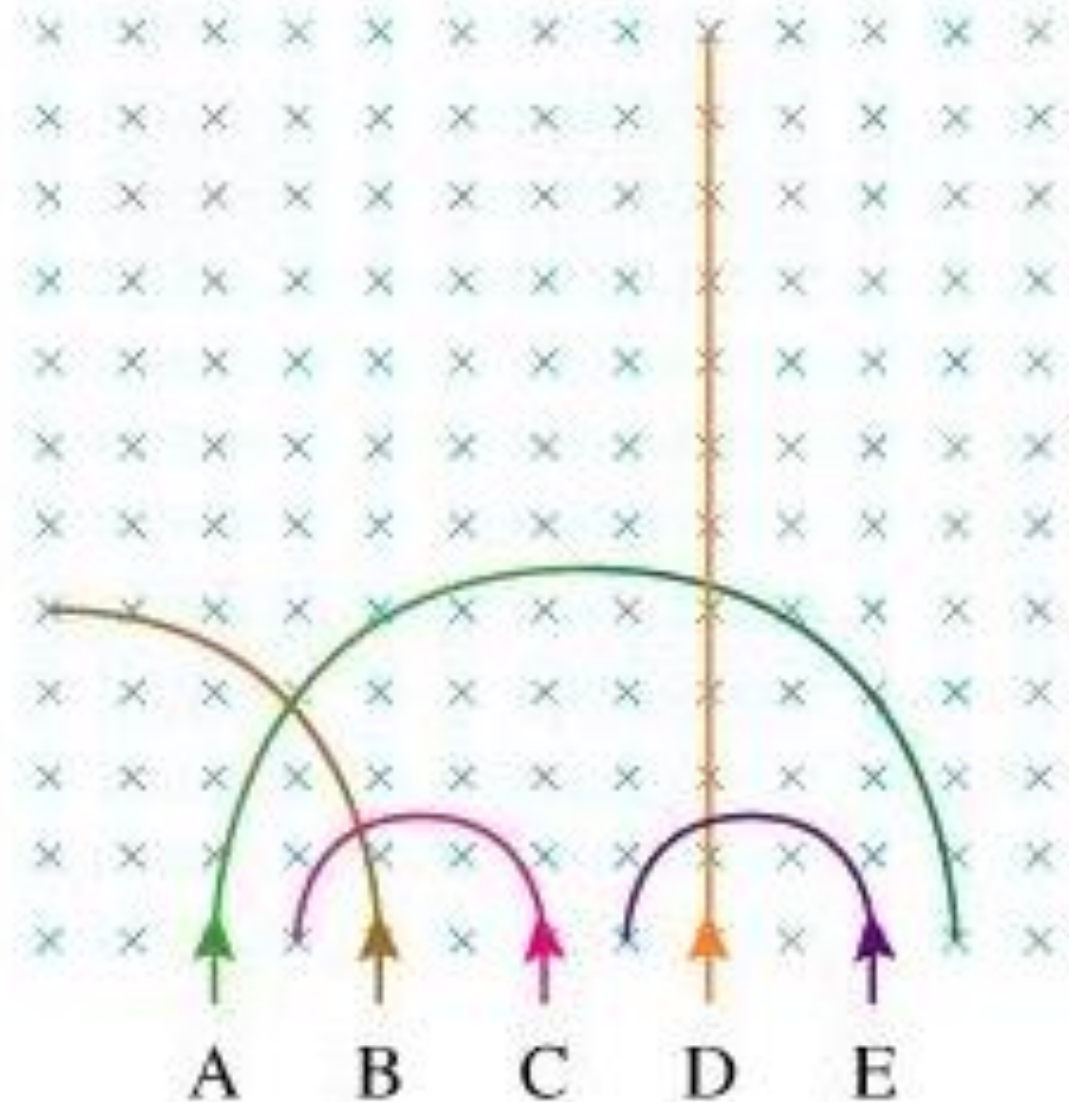


$$F_m = F_c$$

$$q \cdot v \cdot B = \frac{m \cdot v^2}{R}$$

$$R = \frac{m \cdot v}{q \cdot B}$$

Desvio de diversas partículas

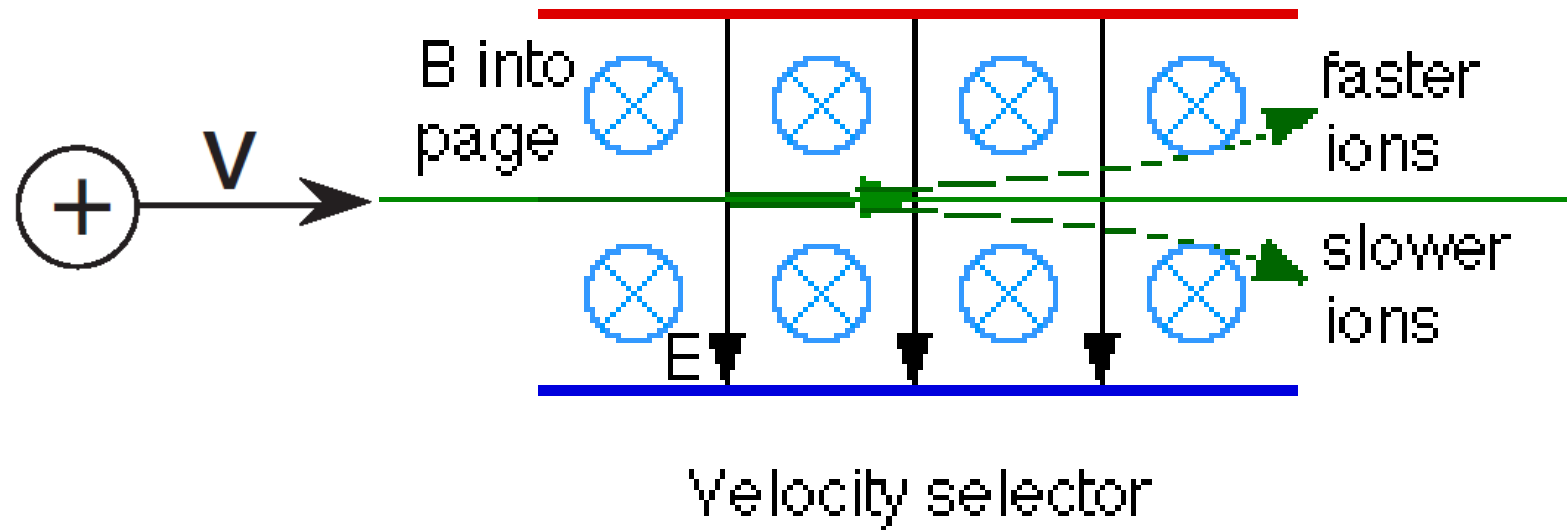


$$R = \frac{m \cdot V}{q \cdot B}$$

Caso do campo E e do campo B

$$F_m = F_E$$

$$q \cdot v \cdot B = E \cdot q$$



$$v = \frac{E}{B}$$

Força magnética em uma carga

Prof. Jadoski
Física