

MITOSE

Fases da divisão

Prof. Hare
BIOLOGIA

CICLO CELULAR

?

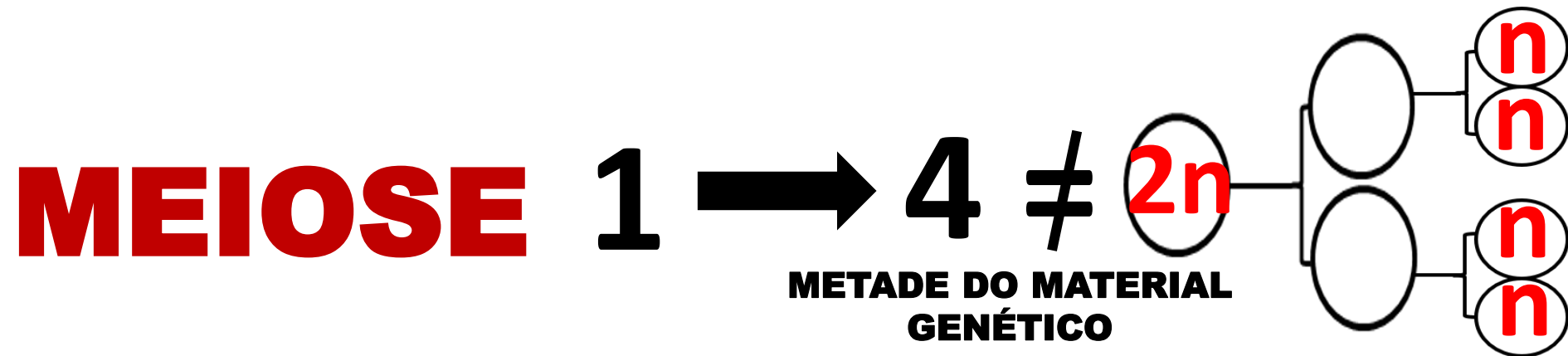
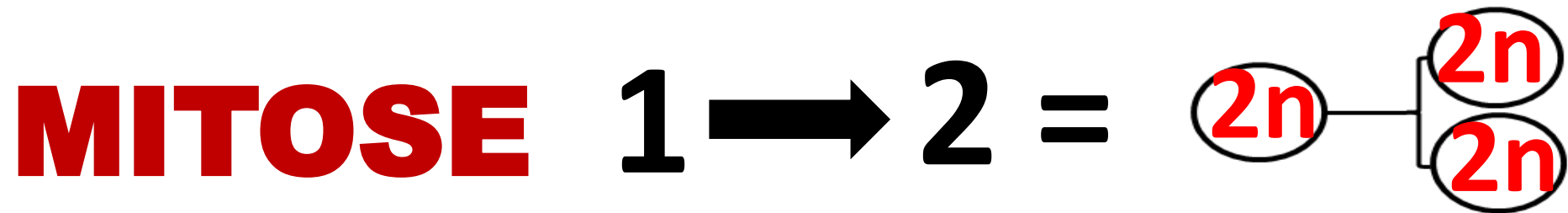
A EXISTÊNCIA DA CÉLULA (PERÍODO)

COMPREENDE:

INTÉRFASE + DIVISÃO

TIPOS DE DIVISÃO

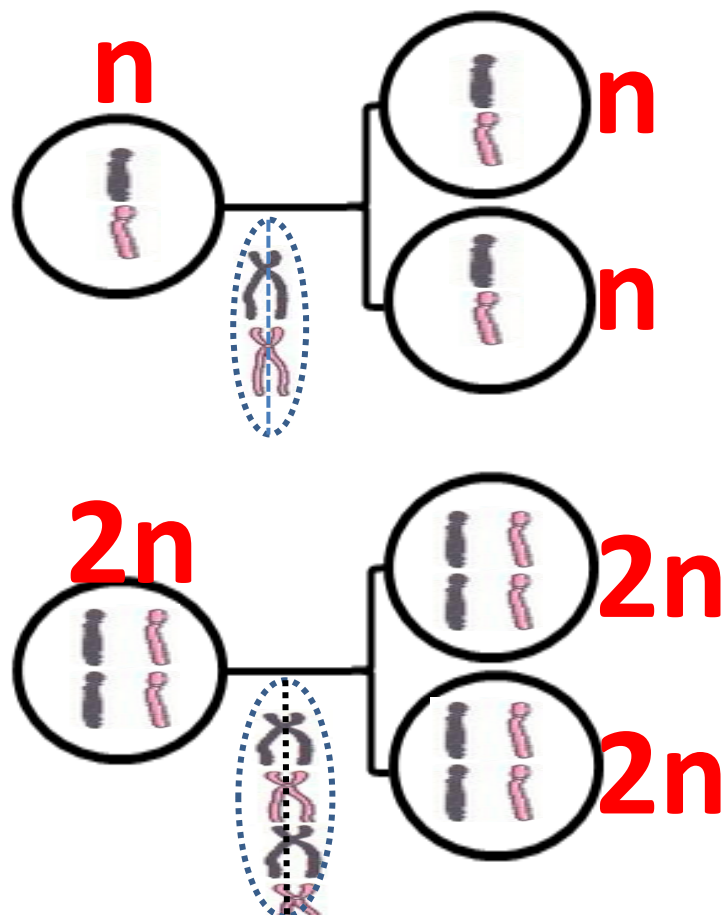
TIPOS DE DIVISÃO



MITOSE e MEIOSE

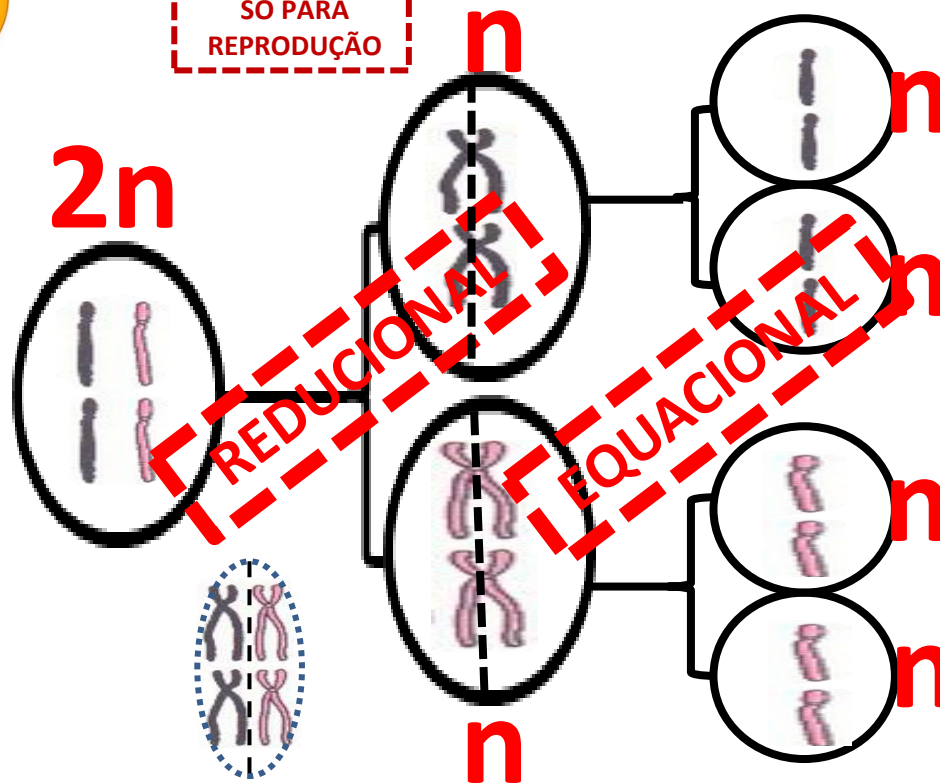
ANTES DA DIVISÃO CELULAR SEMPRE
DUPLICA O MATERIAL GENÉTICO

MITOSE

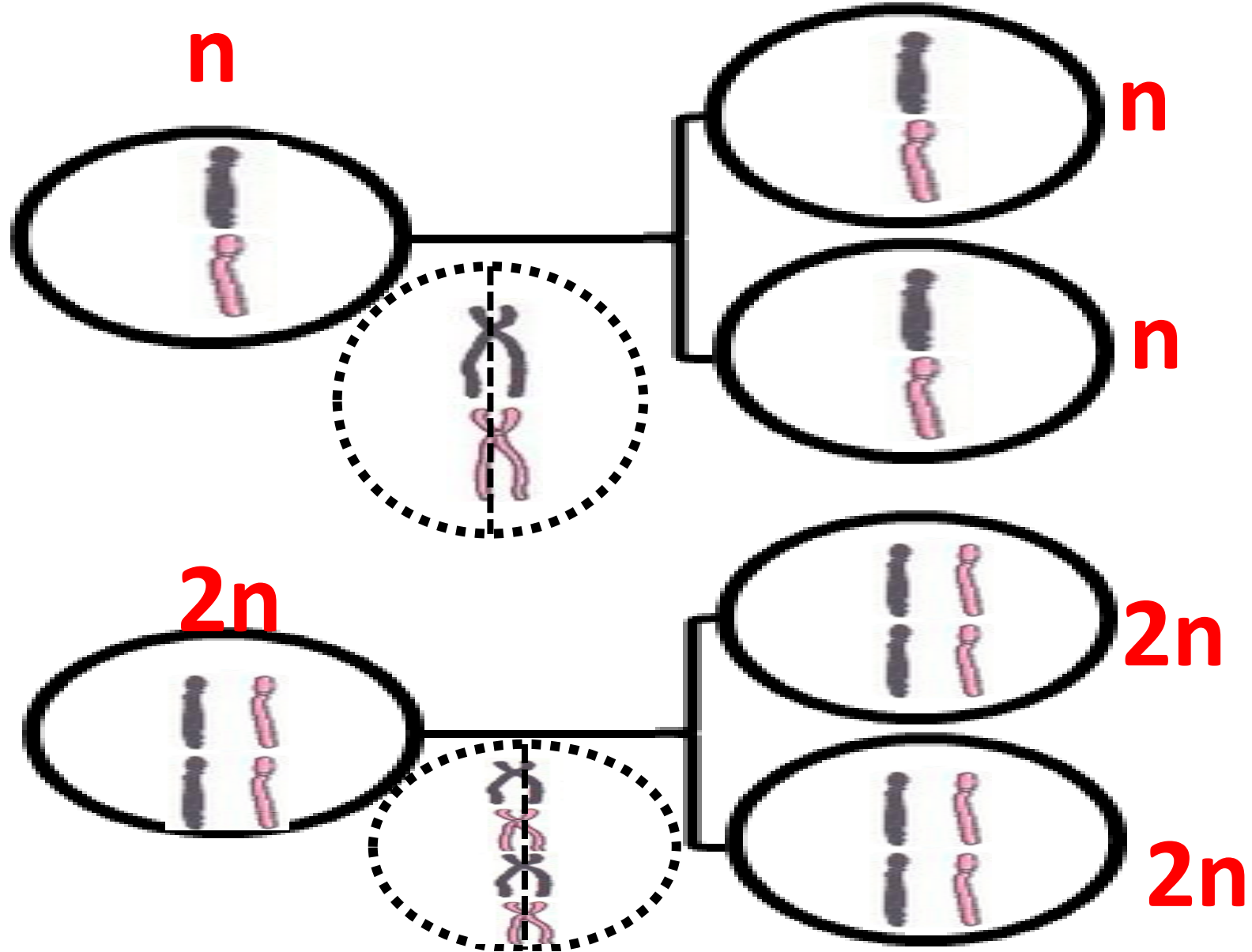


MEIOSE
SÓ PARA
REPRODUÇÃO

MEIOSE



MITOSE



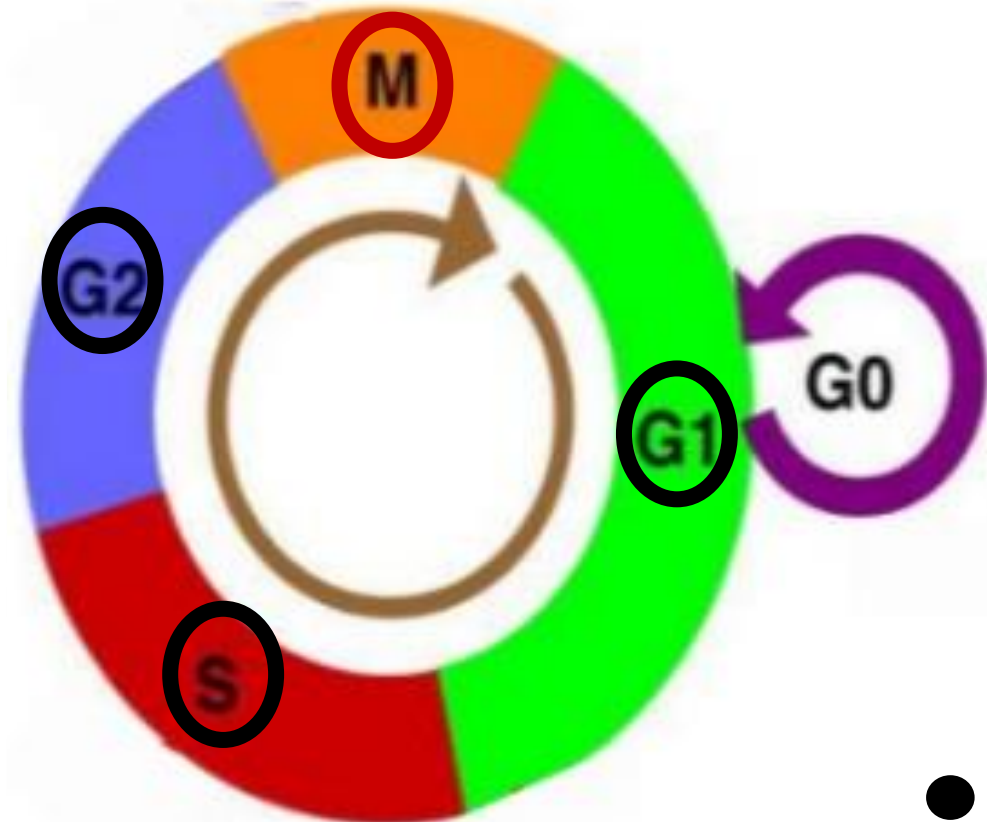
CICLO CELULAR

- **COLCHICINA** ➡ Impede a divisão celular

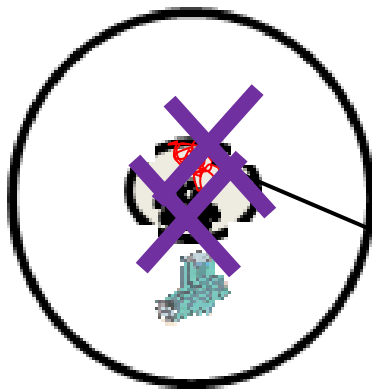
Impede FORMAÇÃO DA
PROTEÍNA DO FUSO

QUIMIOTERÁPICOS

- **COLCHICINA**
- **VIMBLASTINA**
- **VINCRISTINA**
- **TAXOL**

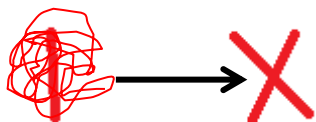


INTÉRFASE

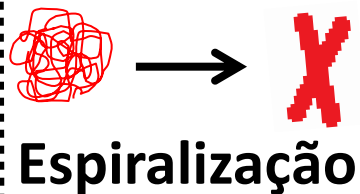
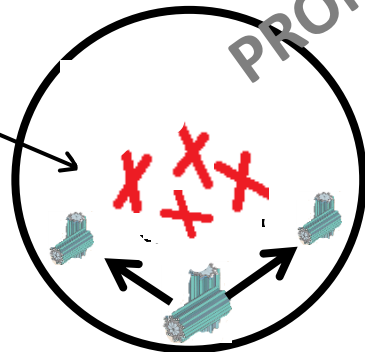


Fase S

duplica DNA

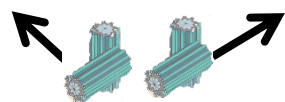


PRÓFASE



Espiralização

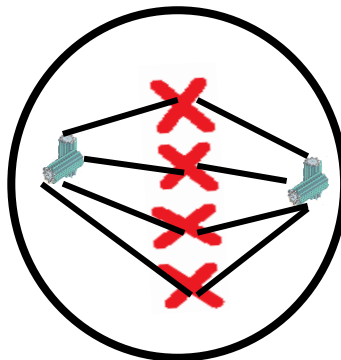
~~Desaparece:~~
carioteca nucléolo



centríolo

duplica polariza

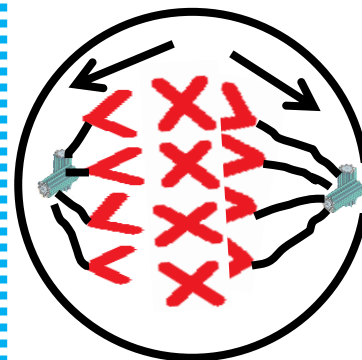
METÁFASE



Placa equatorial

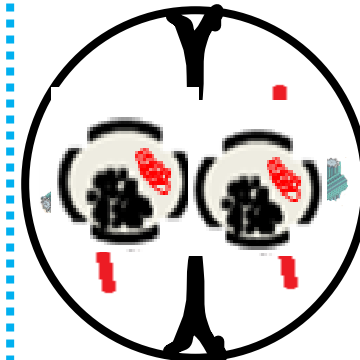
Fuso formado

ANÁFASE



SEPARAÇÃO das cromátides irmãs

TELÓFASE



CITOCINESE

REAPARECE:

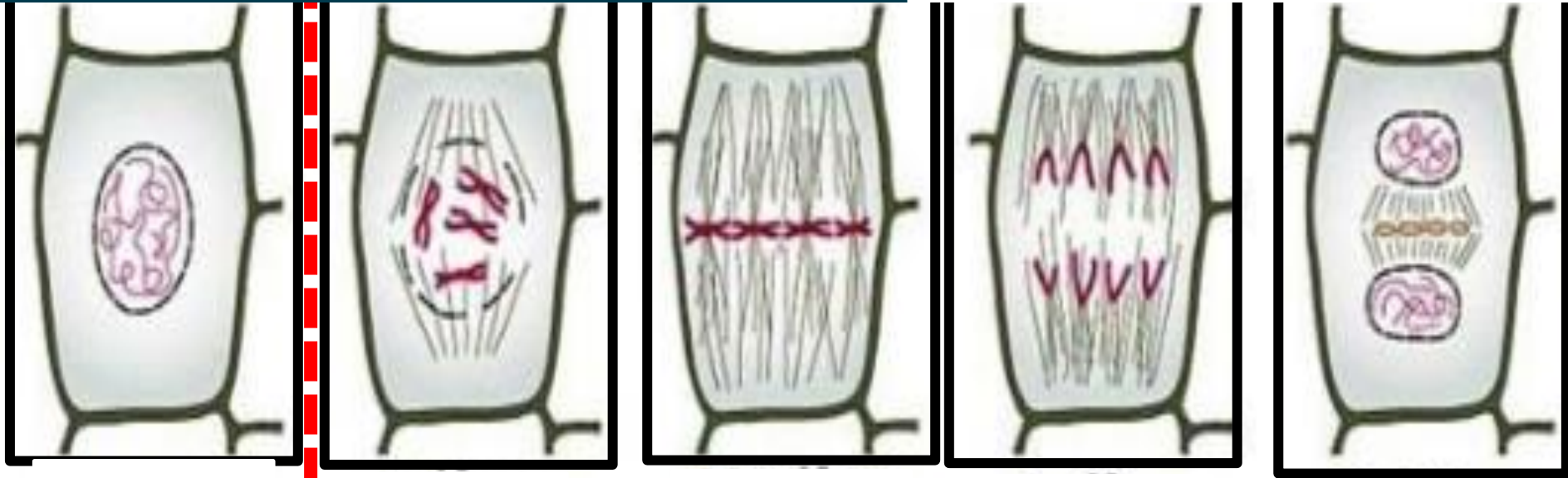
nucléolo carioteca



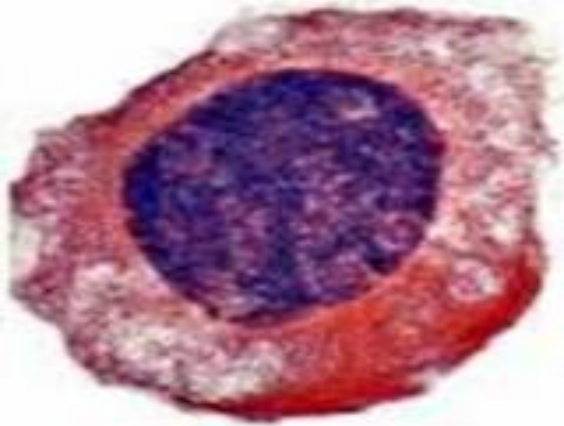
CARIOCINESE

núcleo

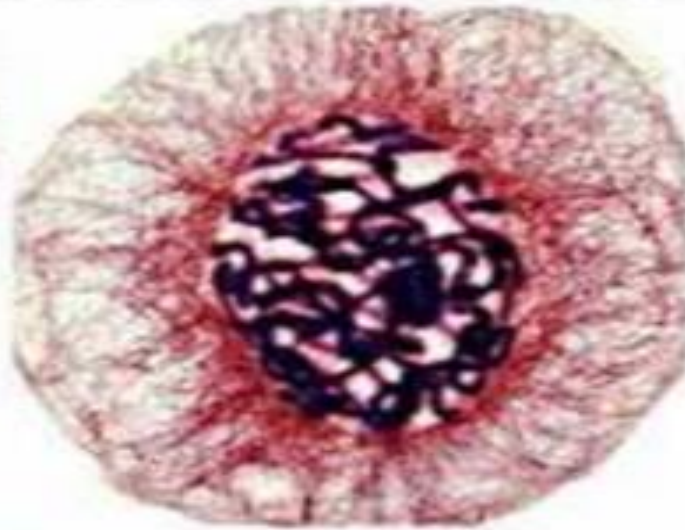
MITOSE



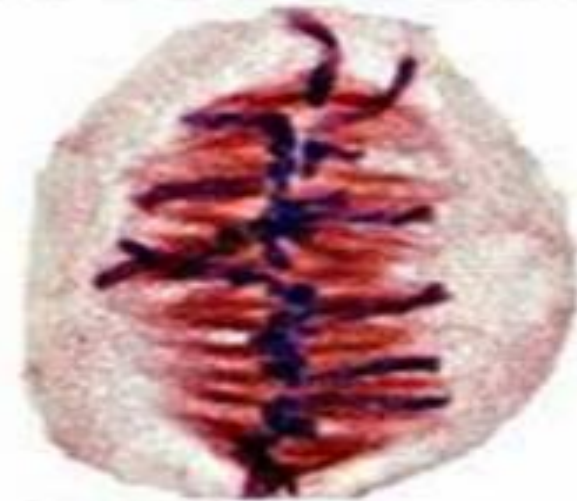
Interfase



Profase



Metafase



Anafase

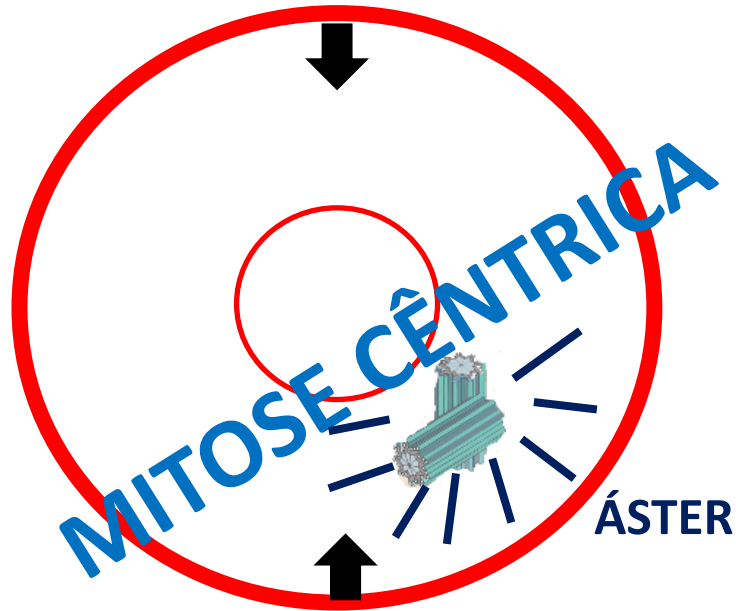


Telofase



ANIMAL x VEGETAL

CÉLULA ANIMAL

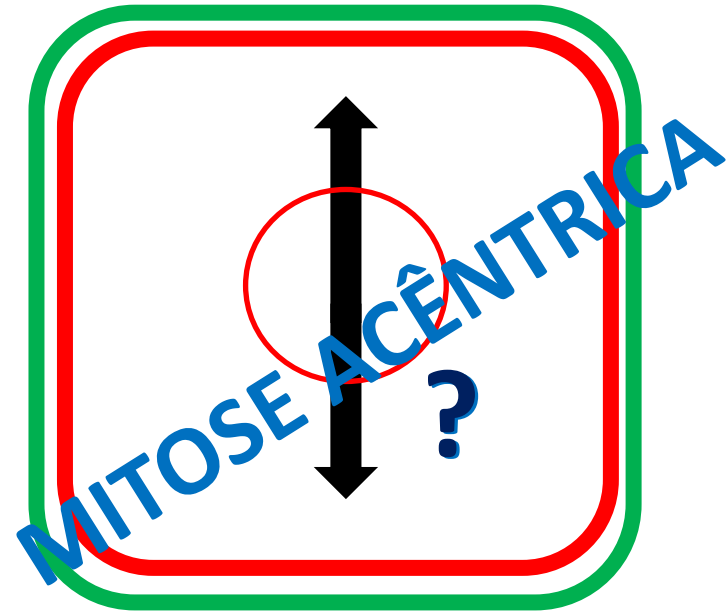


CITOCINESE
CENTRÍPEDA

ASTRAL

CITOCINESE
CENTRÍOLO
ÁSTER

(SUPERIORES) CÉLULA VEGETAL



CITOCINESE
CENTRÍFUGA

ANASTRAL



GRÁFICO



MITOSE

