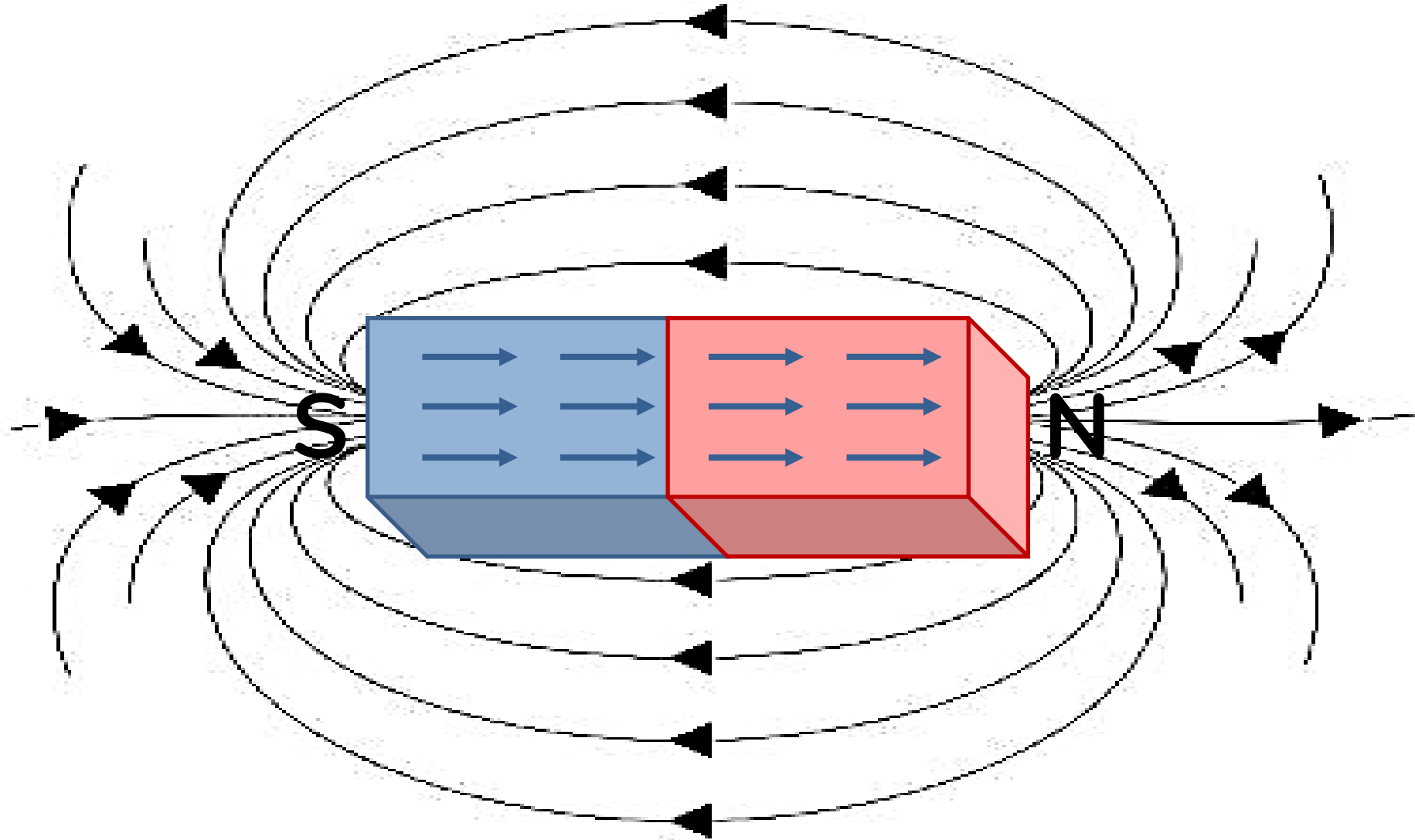


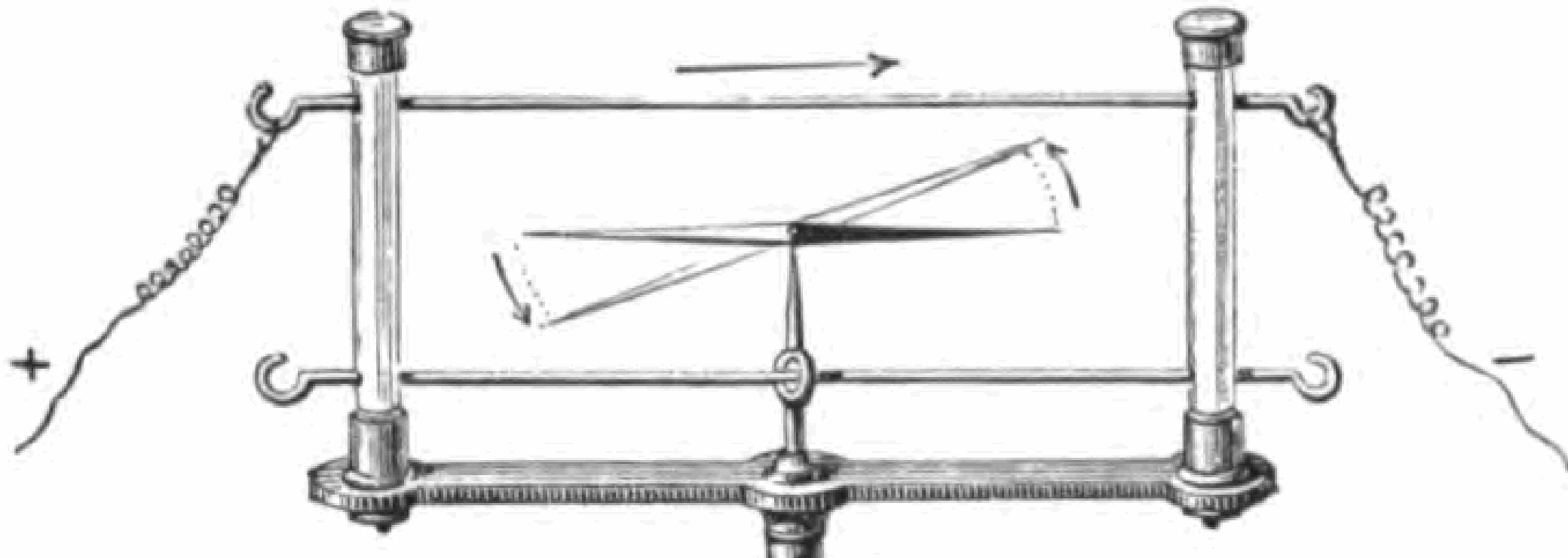
Campo magnético de correntes elétricas

Prof. Jadoski
Física

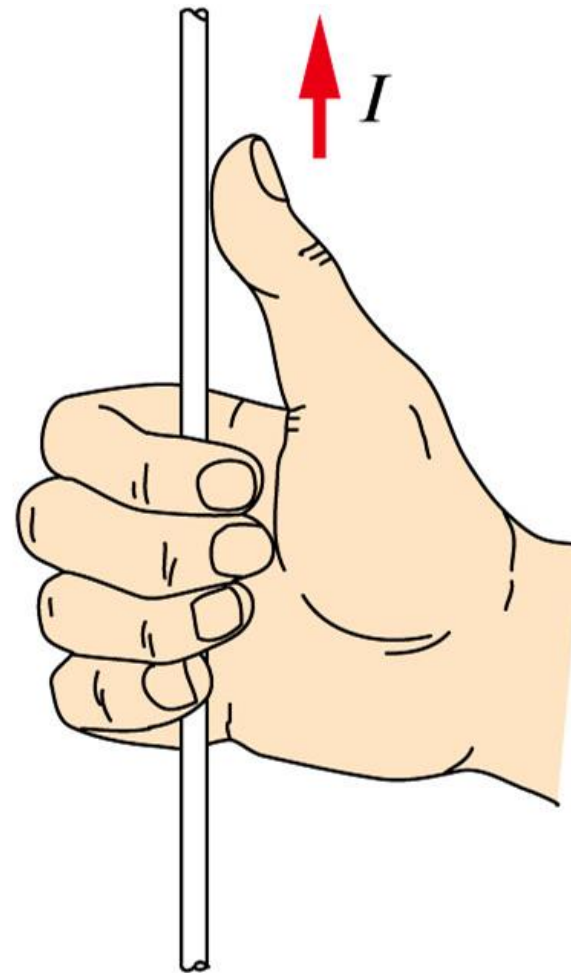
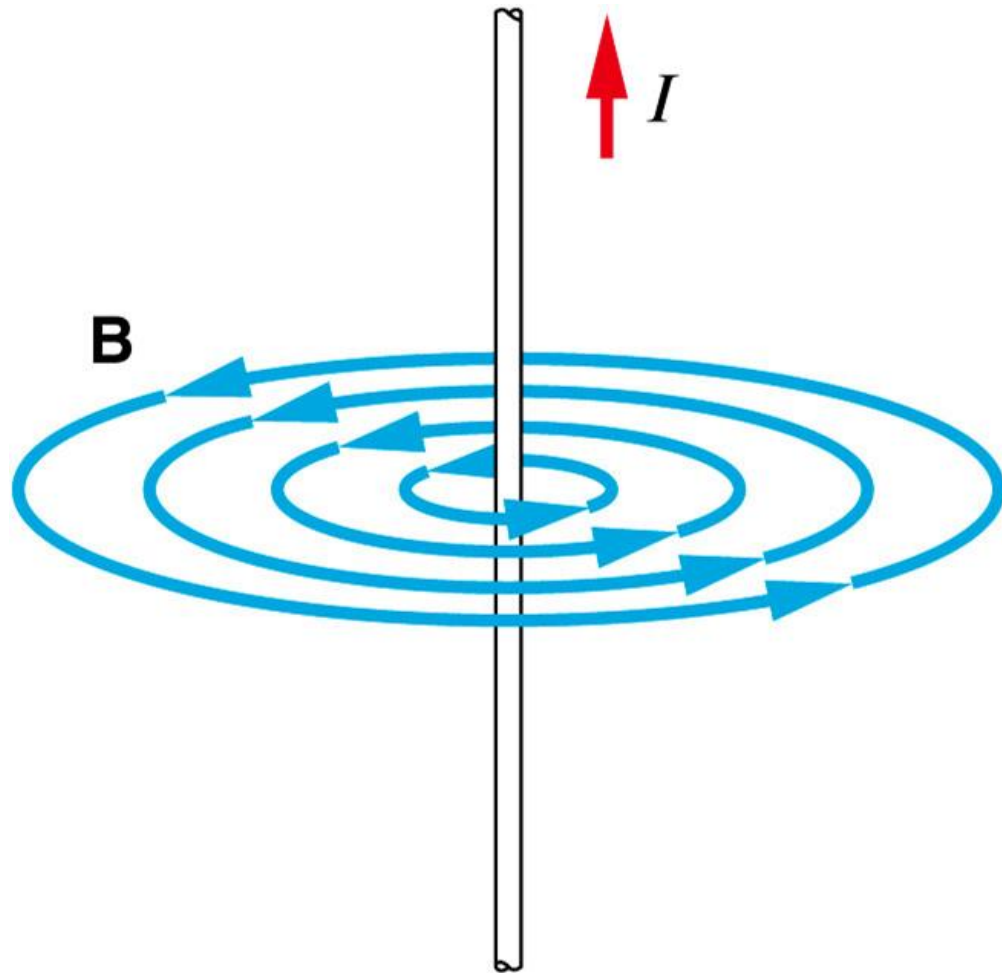
Propriedades magnéticas - campo



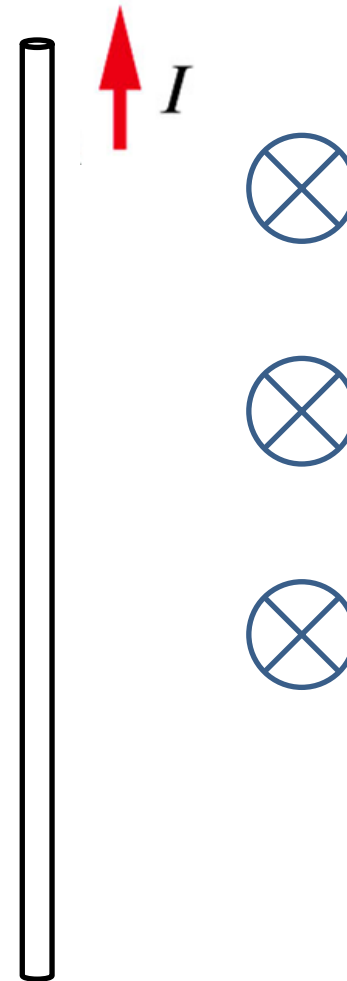
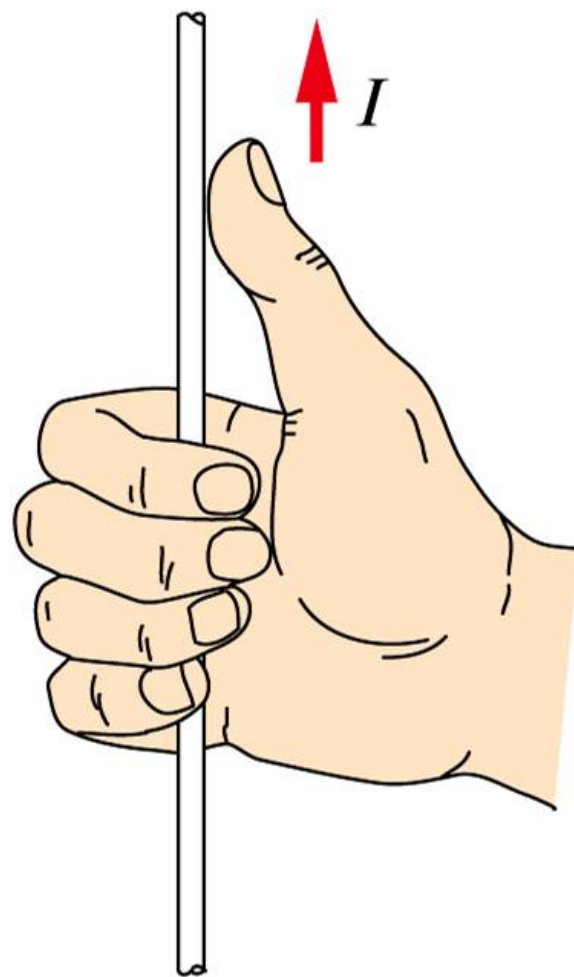
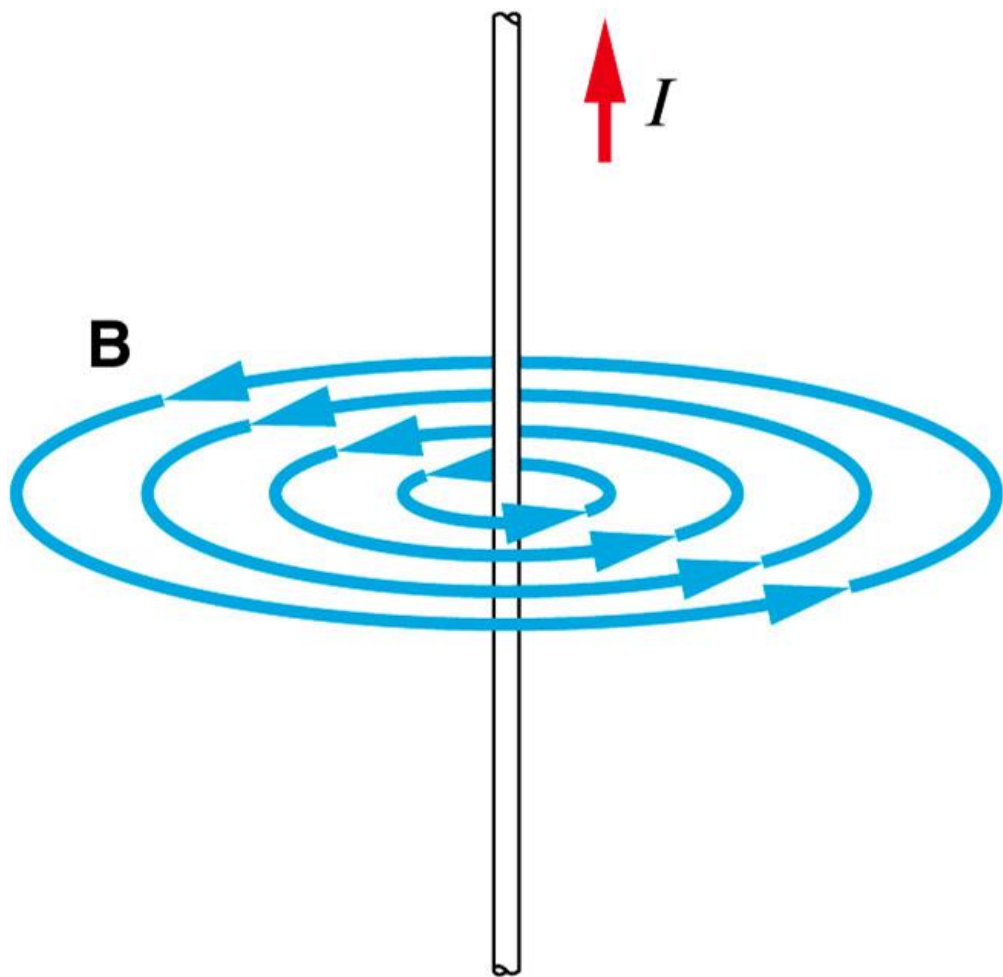
Experiência de Oersted



Campo magnético – fio retilíneo

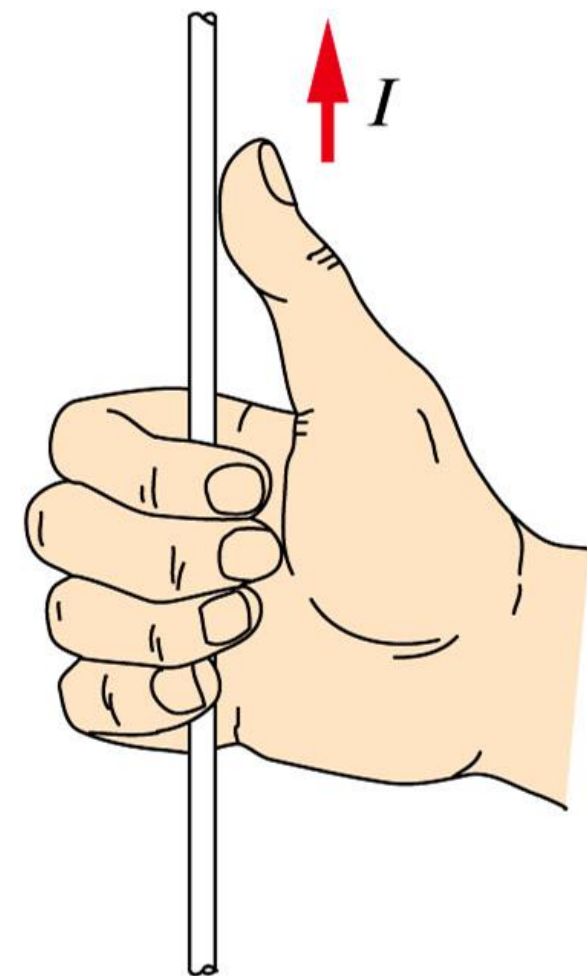
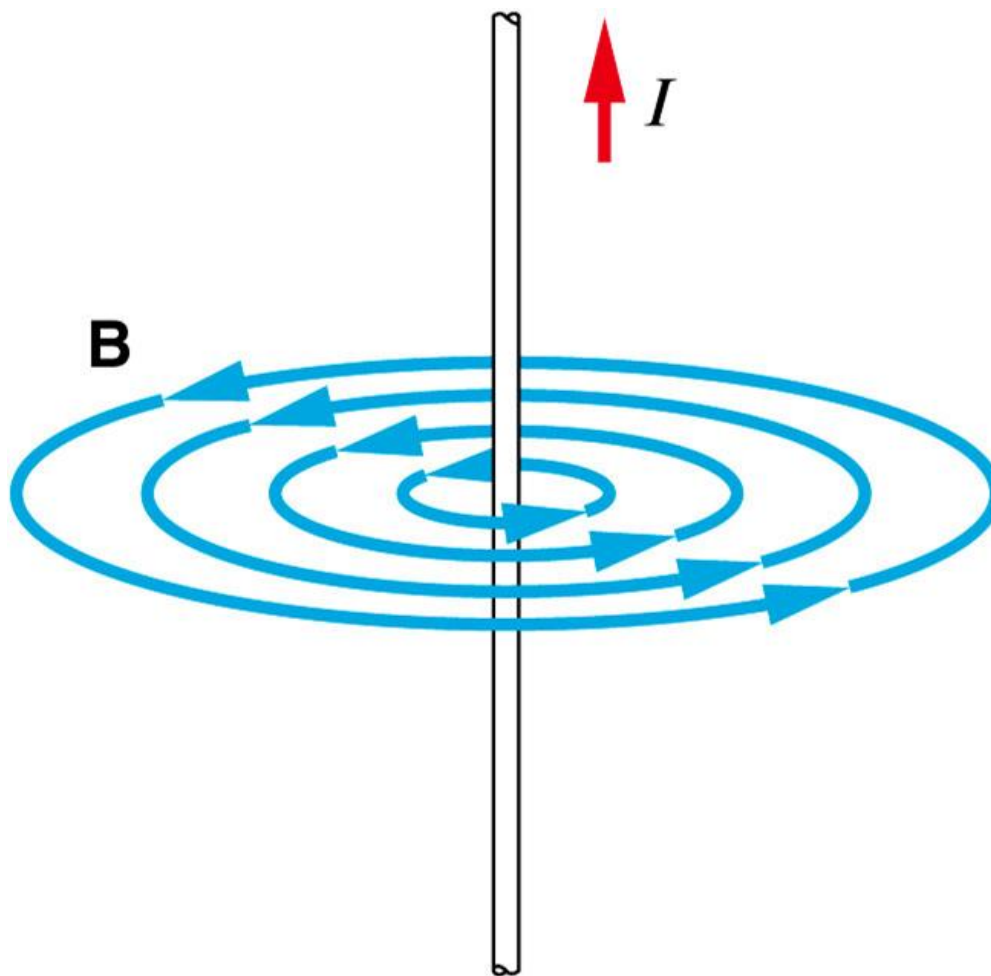


Campo magnético – fio retilíneo

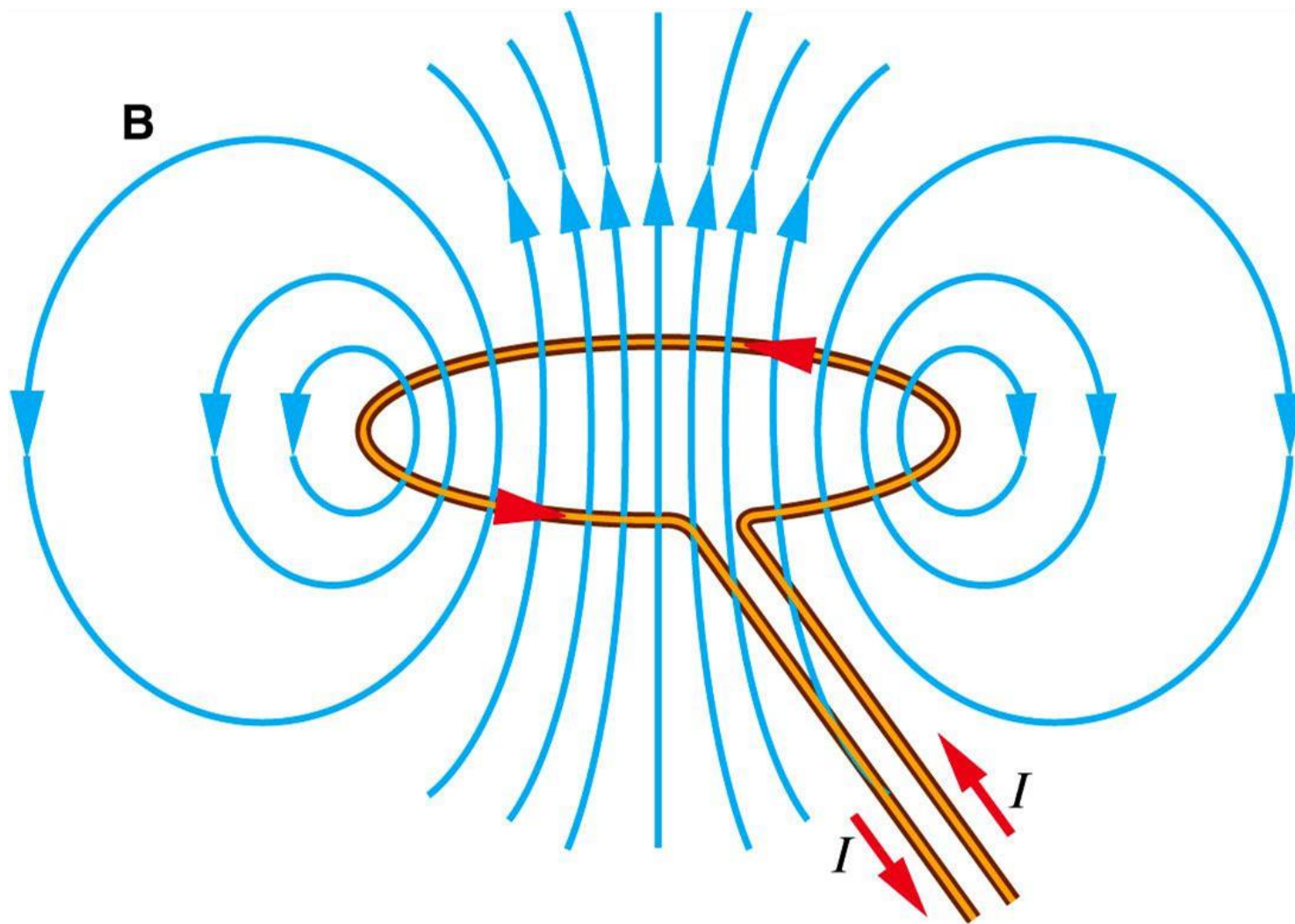


Campo magnético – fio retilíneo

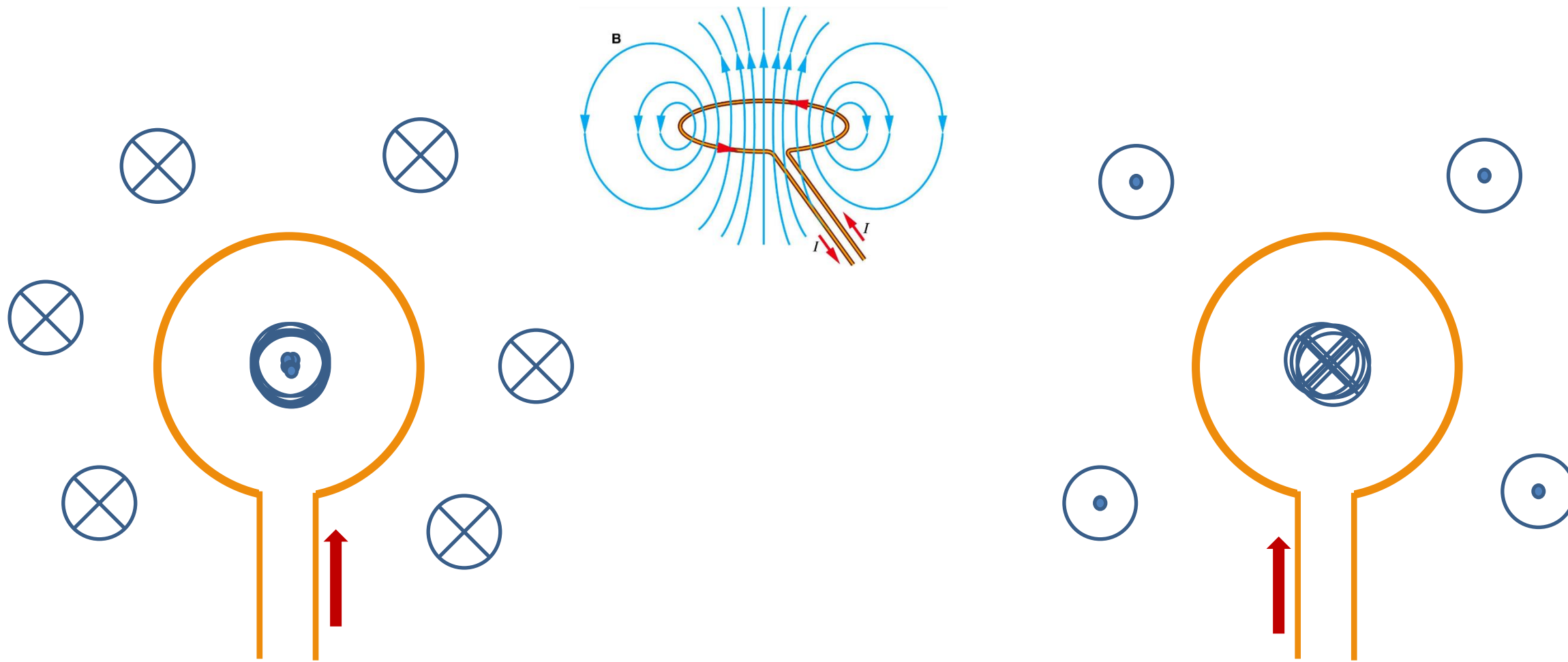
$$B = \frac{\mu \cdot i}{2 \cdot \pi \cdot d}$$



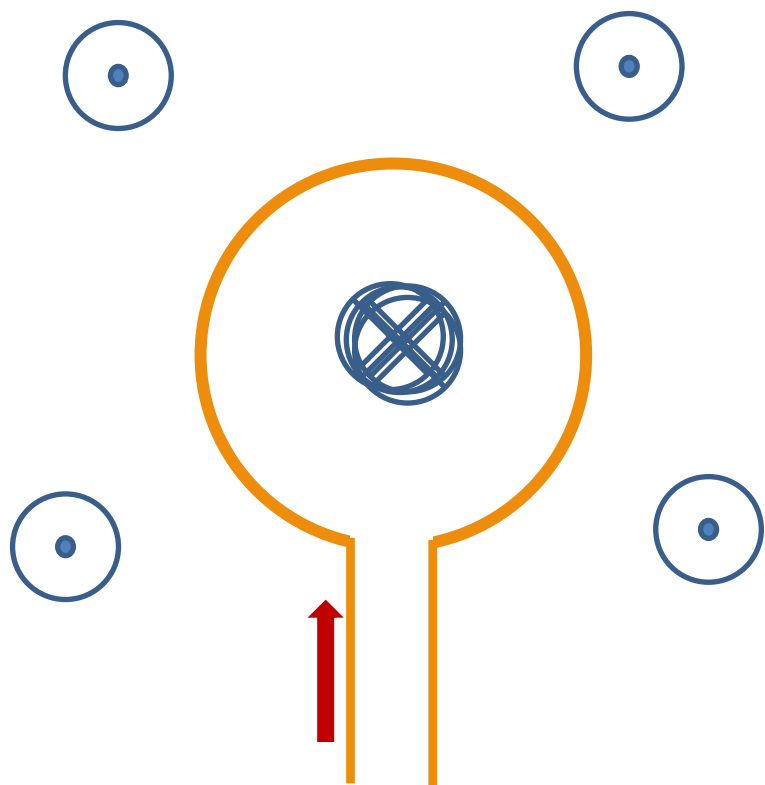
Campo magnético – espira



Campo magnético – espira



Campo magnético – espira

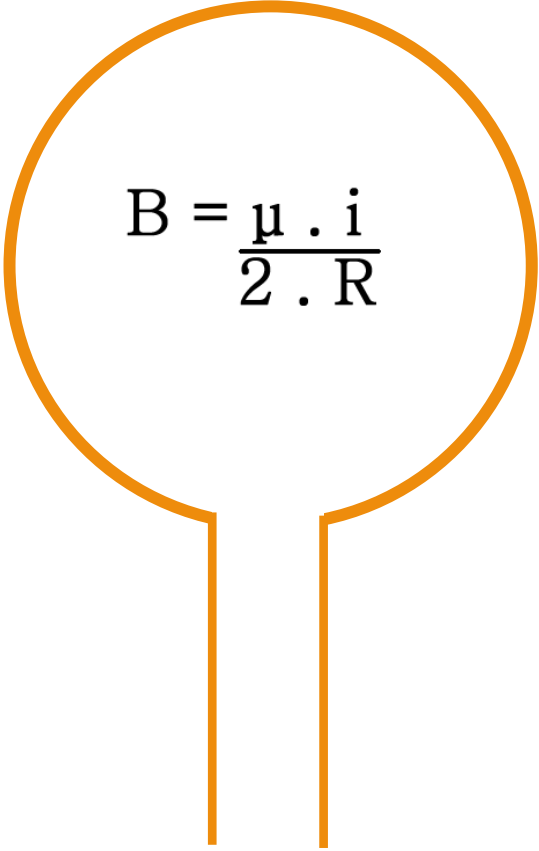


$$B = \frac{\mu \cdot i}{2 \cdot R}$$

Campo magnético – espira (dentro e fora)

$$B = \frac{\mu \cdot i}{2 \cdot \pi \cdot d}$$

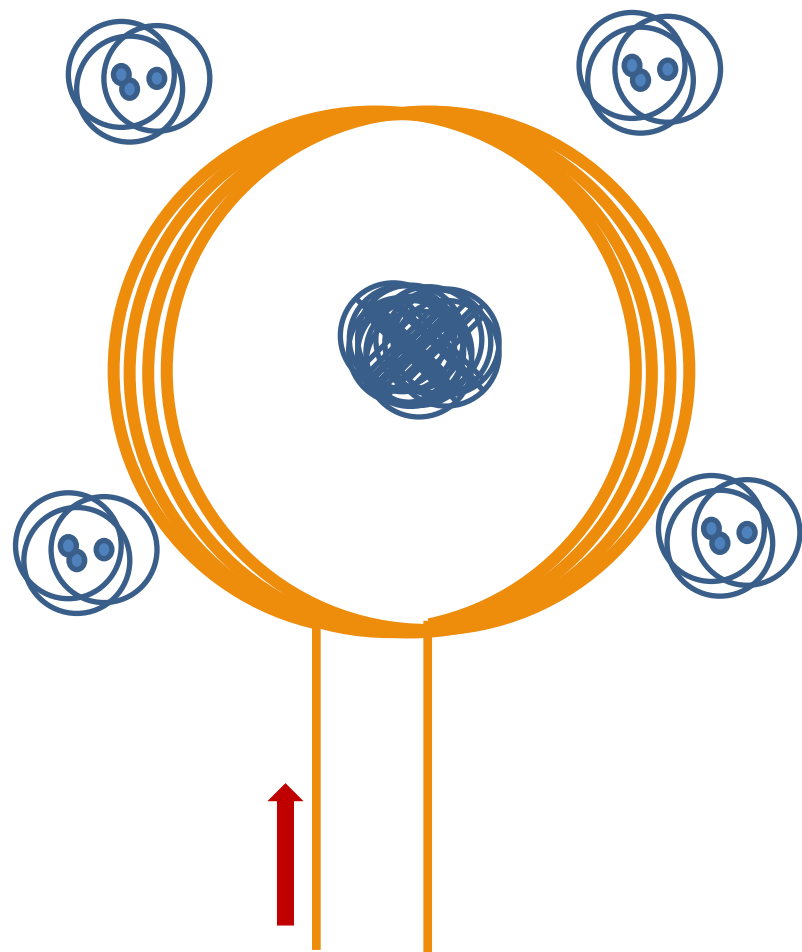
$$B = \frac{\mu \cdot i}{2 \cdot \pi \cdot d}$$


$$B = \frac{\mu \cdot i}{2 \cdot R}$$

$$B = \frac{\mu \cdot i}{2 \cdot \pi \cdot d}$$

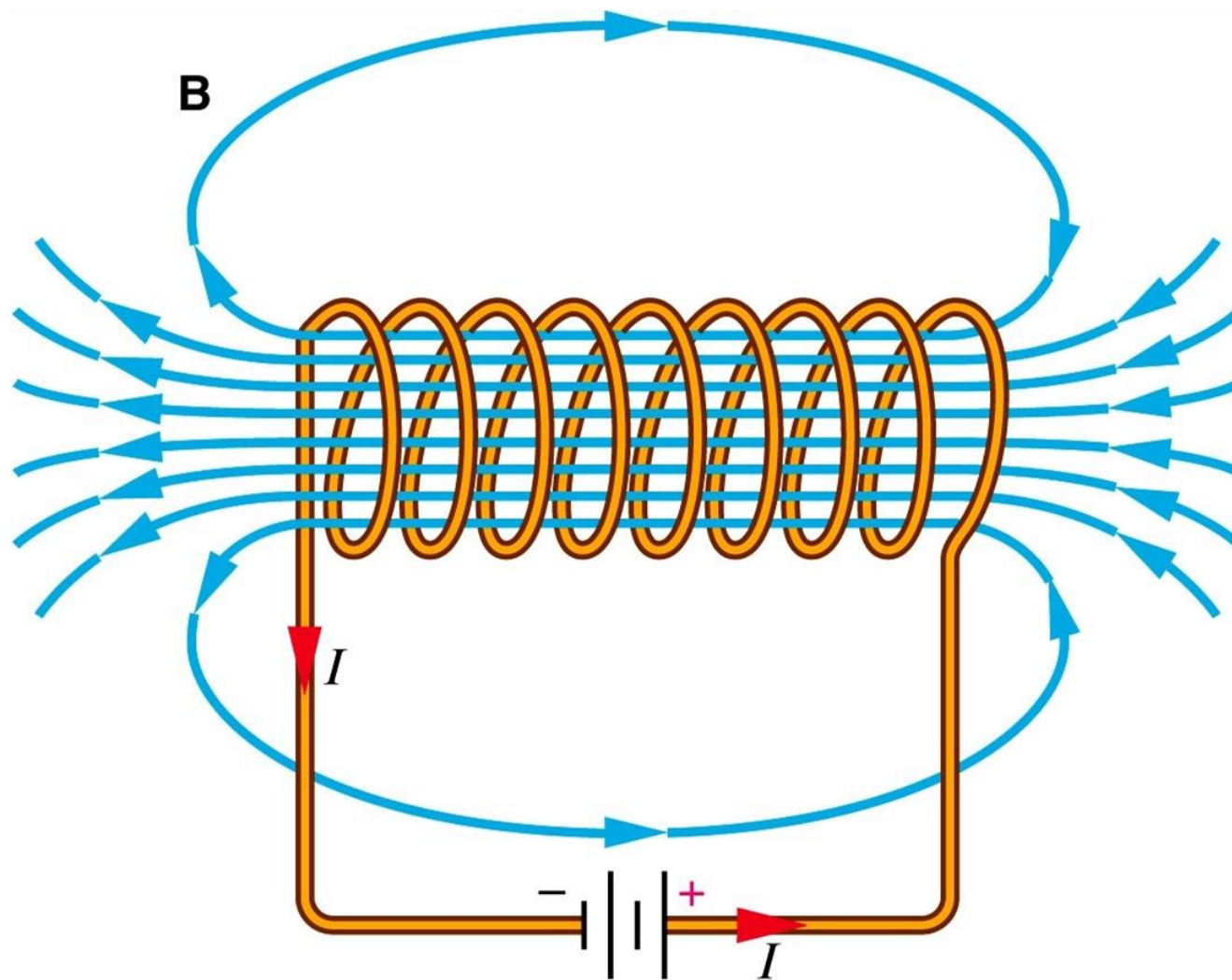
$$B = \frac{\mu \cdot i}{2 \cdot \pi \cdot d}$$

Campo magnético – n espiras

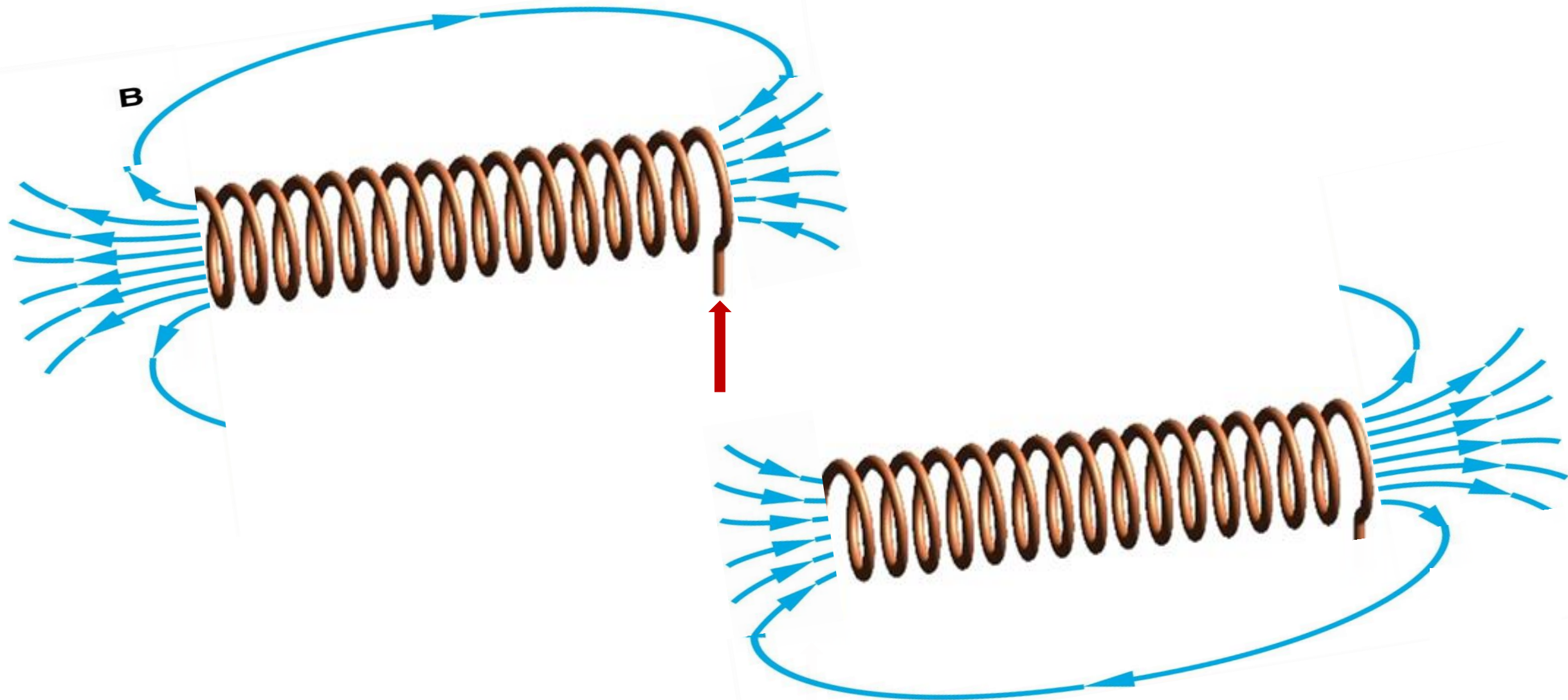


$$B = \frac{\mu \cdot i}{2 \cdot R} \times n$$

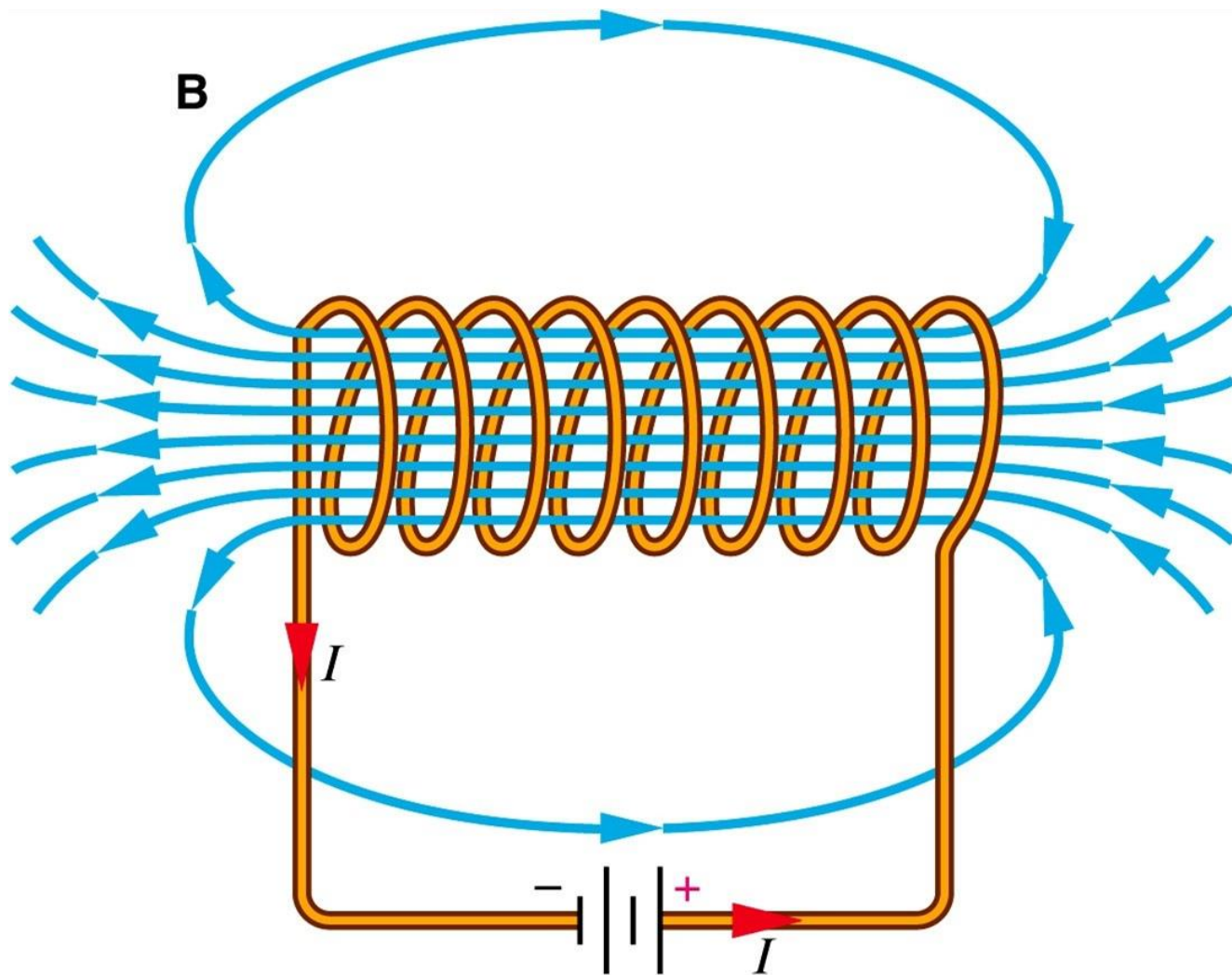
Campo magnético – solenóide



Campo magnético – solenóide

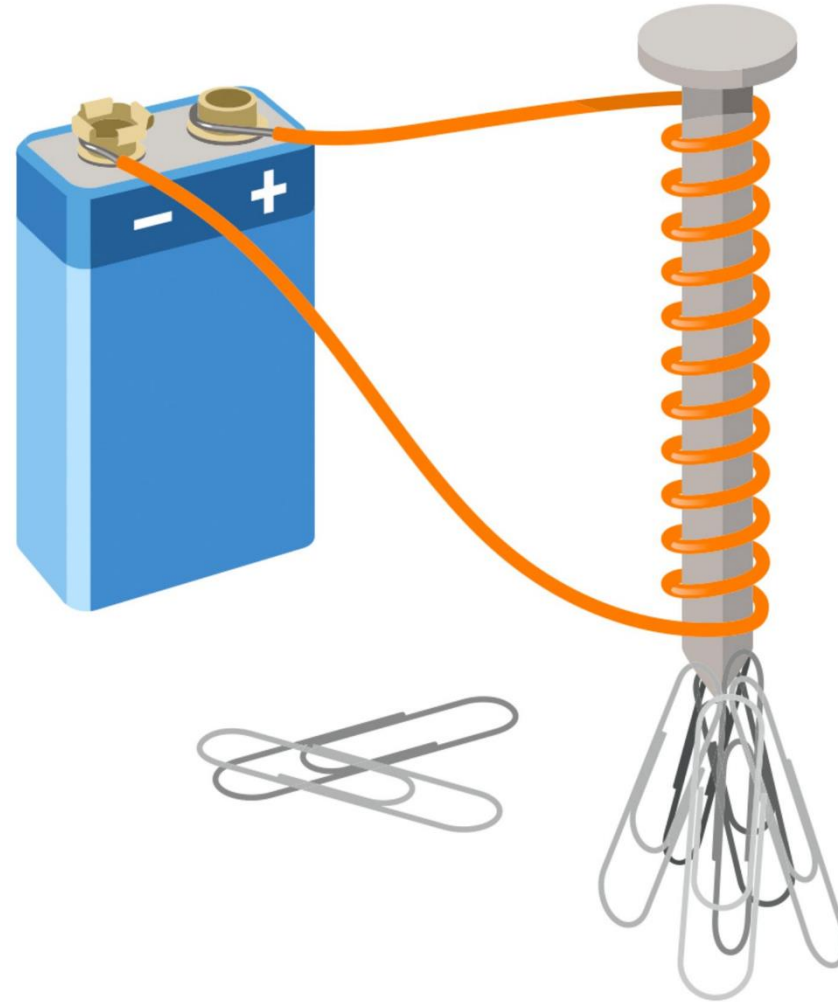


Campo magnético – solenóide



$$B = \frac{\mu \cdot i \cdot n}{l}$$

Campo magnético – solenóide (eletromagnético)



Campo magnetico

Prof. Jadoski
Física