

Parte do Sistema nervoso Central Humano

Prof. André
Biologia

Divisão do Sistema Nervoso:

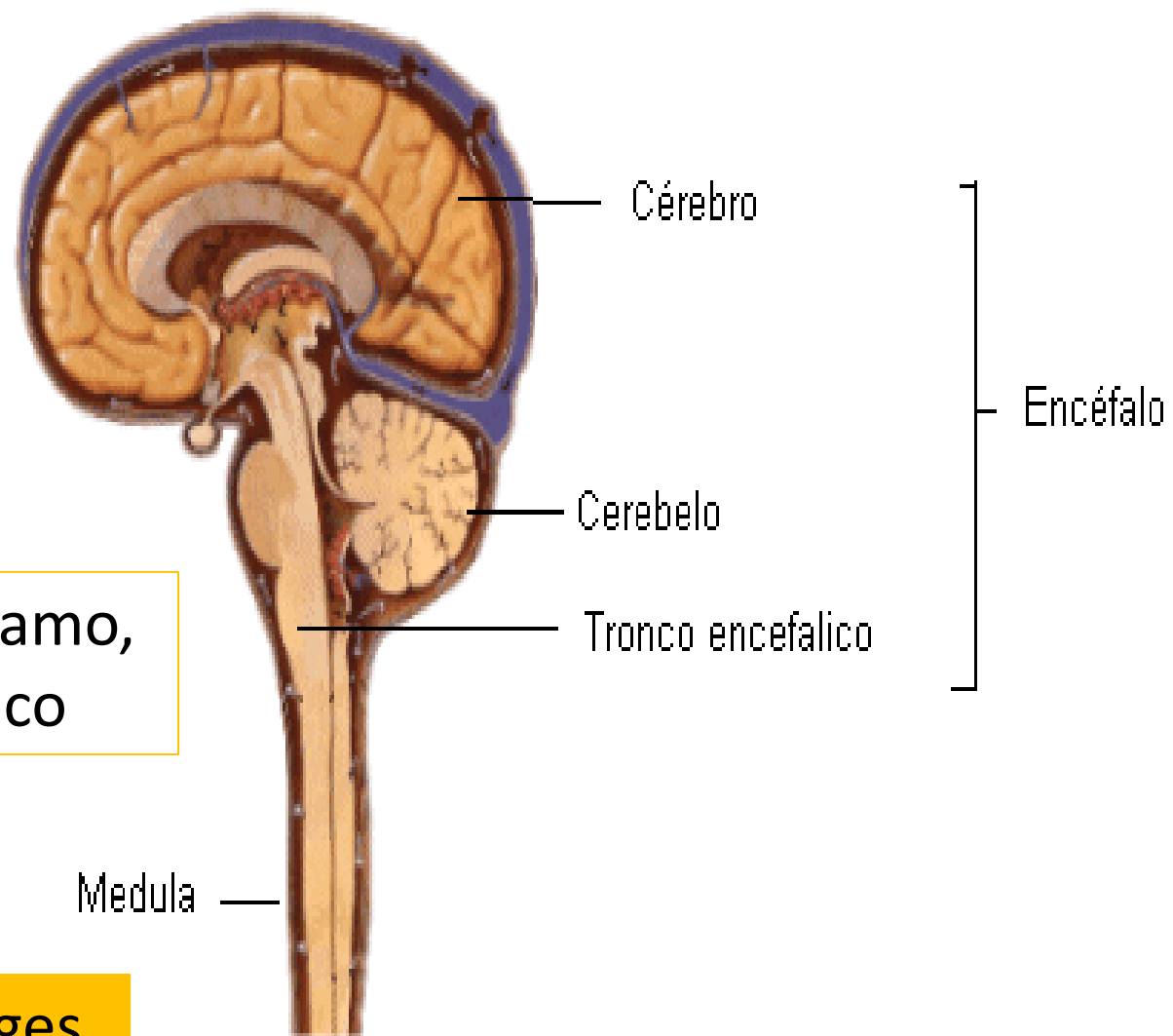
- Central
- Periférico

Sistema Nervoso Central

↳ **Encéfalo** - Cérebro, Tálamo, Hipotálamo, Cerebelo, Tronco encefálico

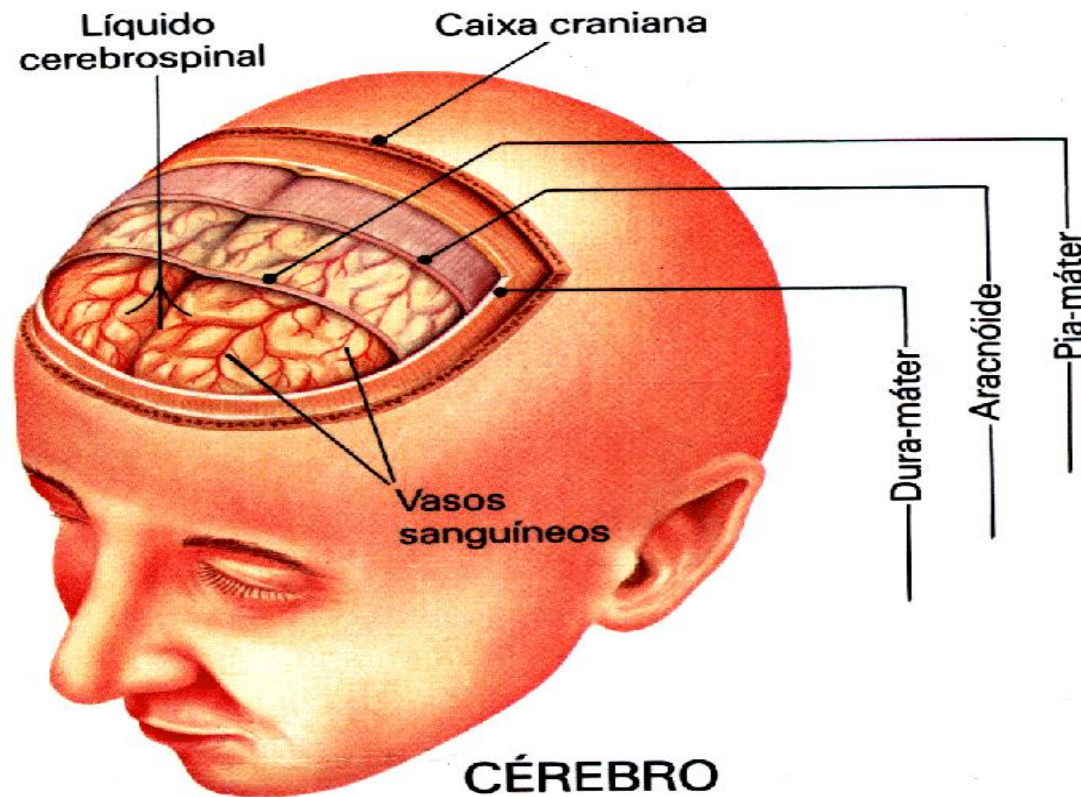
↳ **Medula Espinhal**

O SNC é Protegido por Ossos e as Meninges.

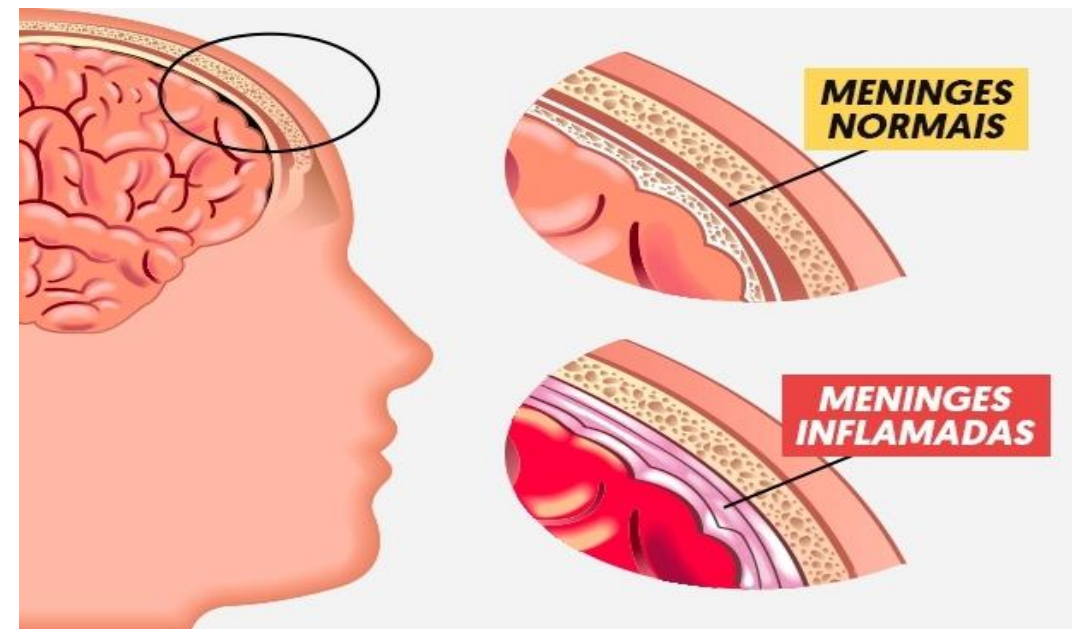


Meninges:

Membranas que envolvem todo o Sistema Nervoso Central.



Líquido Cefalorraquidiano



Exame Diagnóstico – Meningite

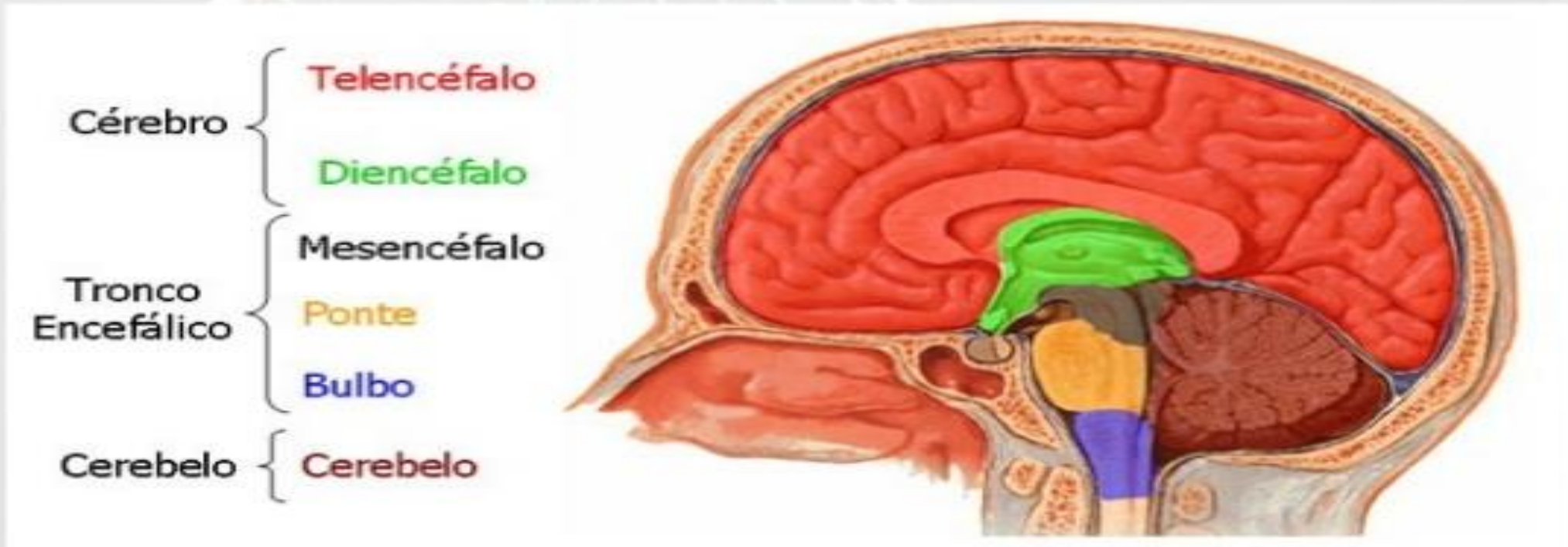


Bacteriana, Viral, Fungos, Traumática...



Divisões do encéfalo

ENCÉFALO = CÉREBRO + TRONCO CEREBRAL + CEREBELO

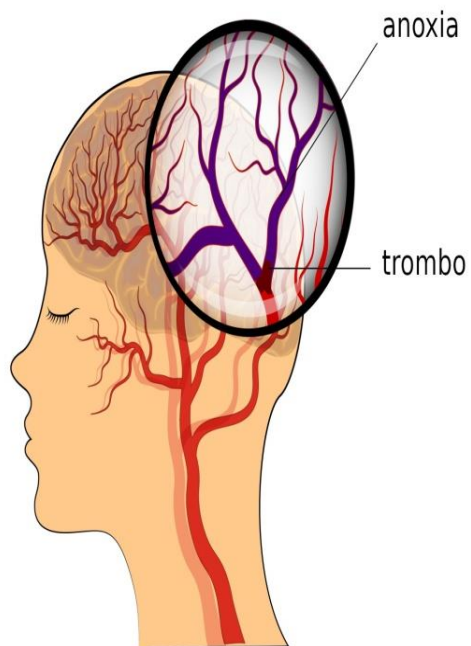


<https://www.auladeanatomia.com/novosite/sistemas/sistema-nervoso/>

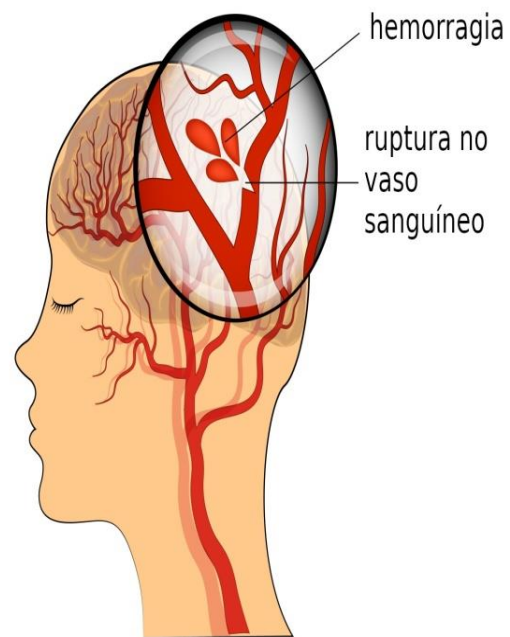
1- CÉREBRO : Hemisfério Direito e Esquerdo

- Unidos pelo Corpo Caloso

ACIDENTE VASCULAR CEREBRAL (AVC)



AVC ISQUÊMICO

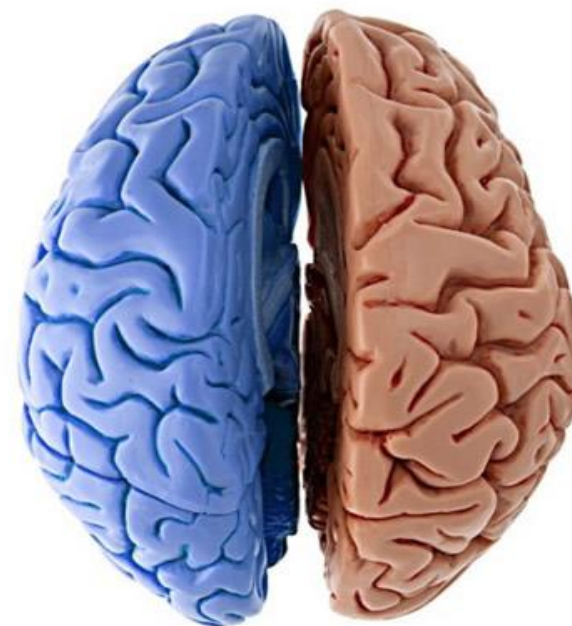


AVC HEMORRÁGICO

ATIVIDADES 'PREPONDERANTES' NOS HEMISFÉRIOS CEREBRAIS

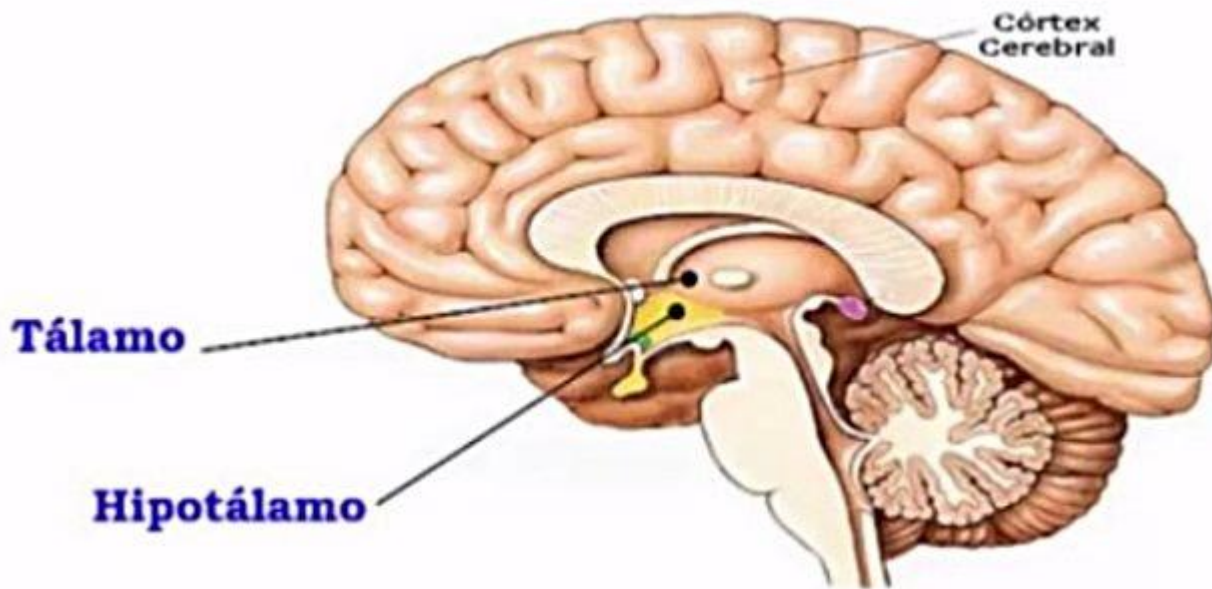
ESQUERDO

Linguagem
Raciocínio lógico
Pensamento analítico
Sequencial e temporal
Lógica
Linear



DIREITO

Visualização
Imaginação
Emocional
Criatividade
Intuição
Raciocínio espacial
Música e Ritmo



- Hipotálamo - Temperatura, Sede, Fome, Endócrina....

- PRODUZ ADH - ANTIDIURÉTICO

2- DIENCÉFALO

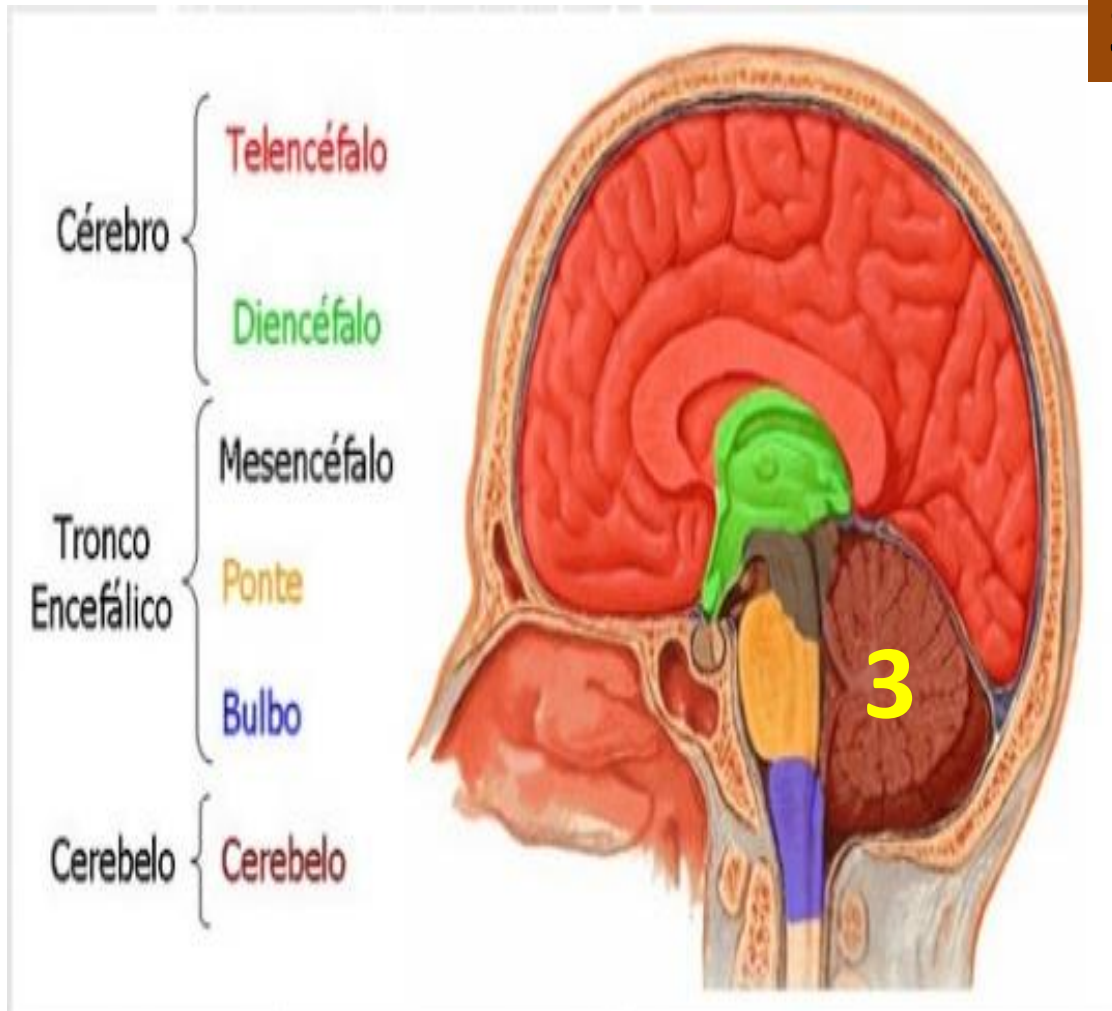
- Tálamo

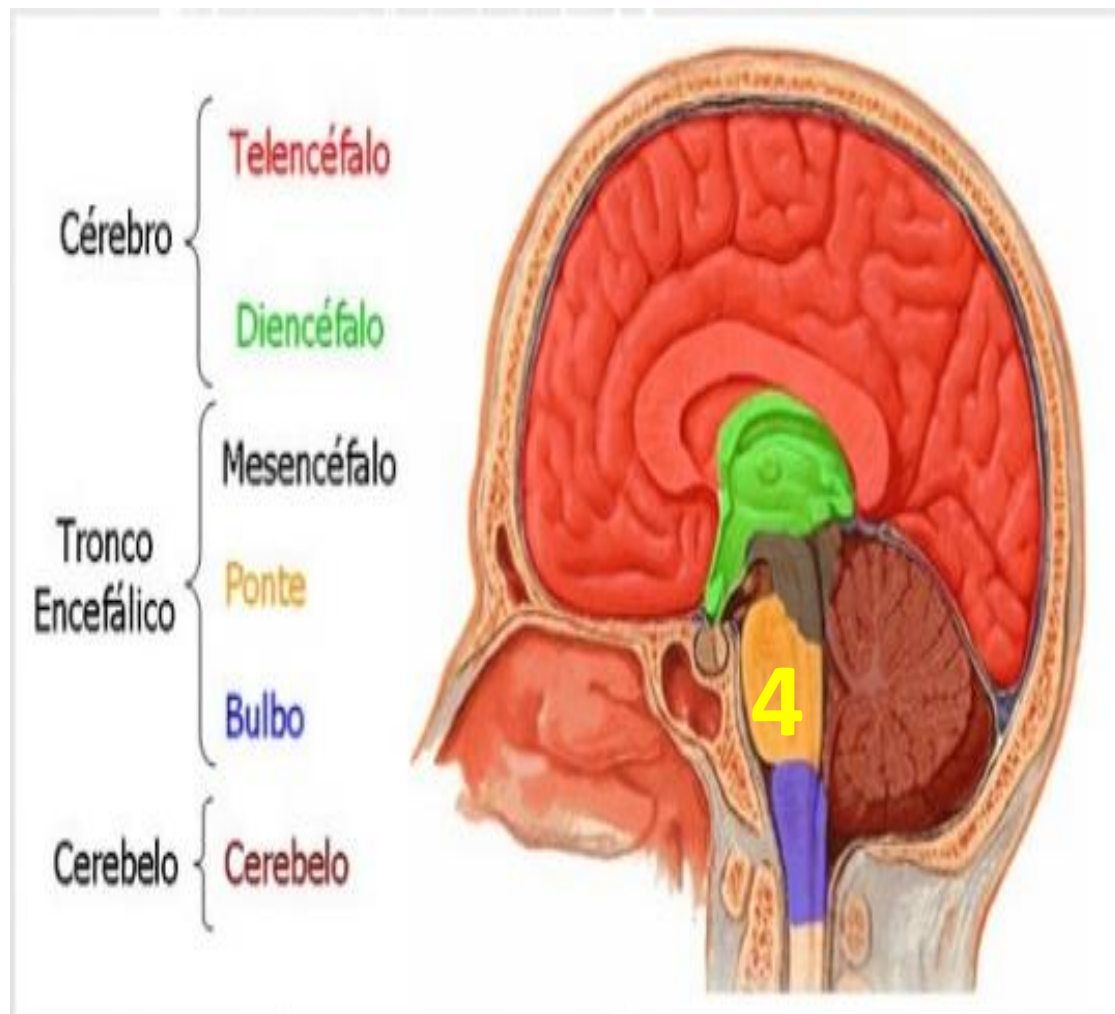
Recebe informações, analisa e direciona para áreas específicas do cérebro.

3- CEREBELO

CENTRO DO EQUILÍBRIO

COORDENAÇÃO MOTORA





4- TRONCO ENCEFÁLICO

- **MESENCÉFALO** - RELAÇÃO MUSCULAR MOTORA

- **PONTE** - LIGAÇÃO ENTRE MEDULA E CÉREBRO

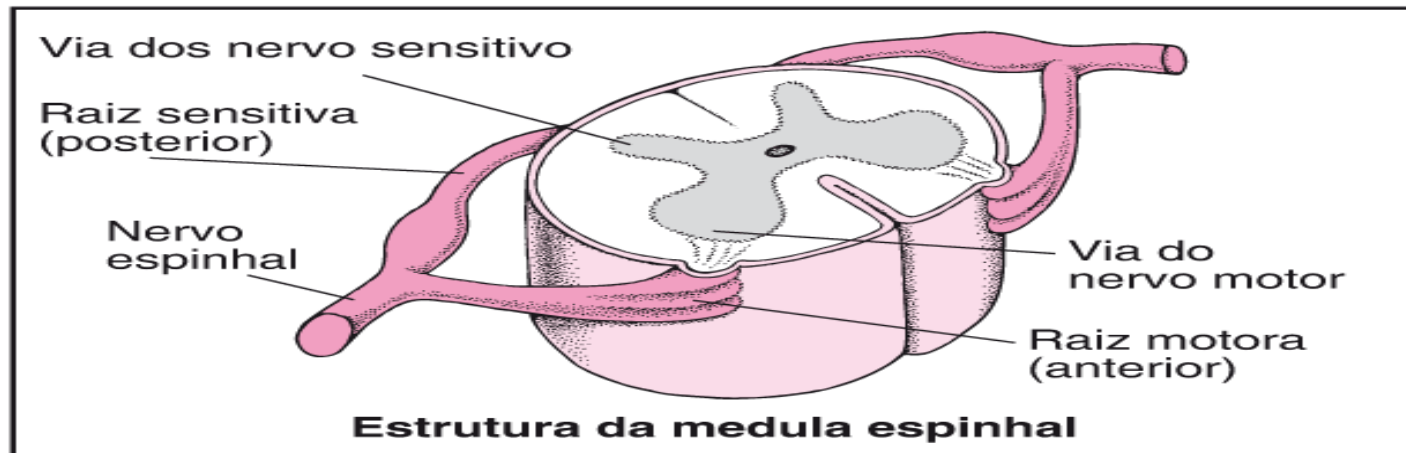
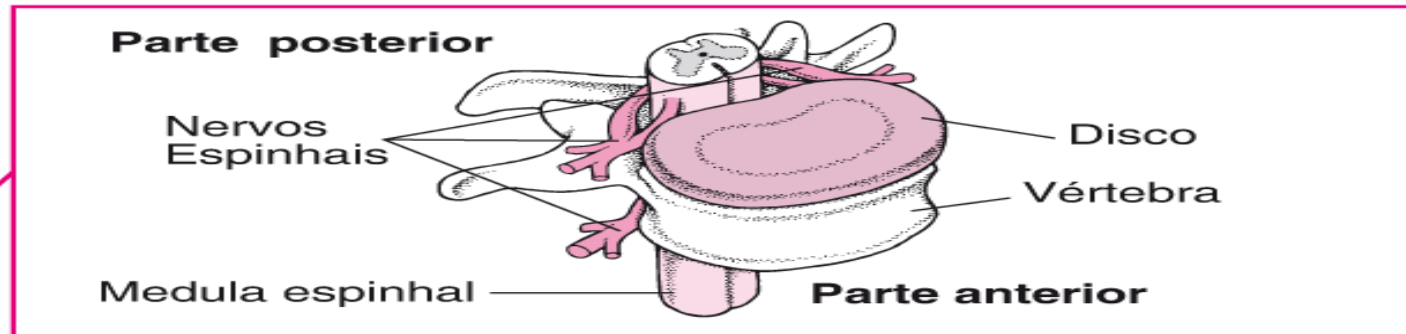
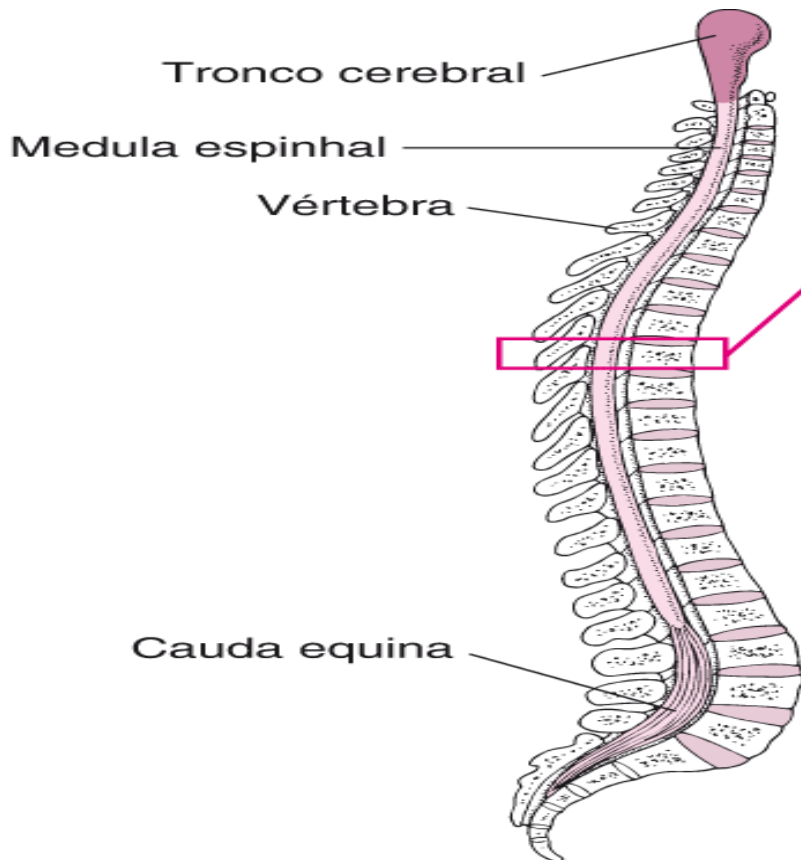
- **BULBO – MEDULA OBLONGA**

└ RESPIRATÓRIO E CARDIOVASCULAR (PA)

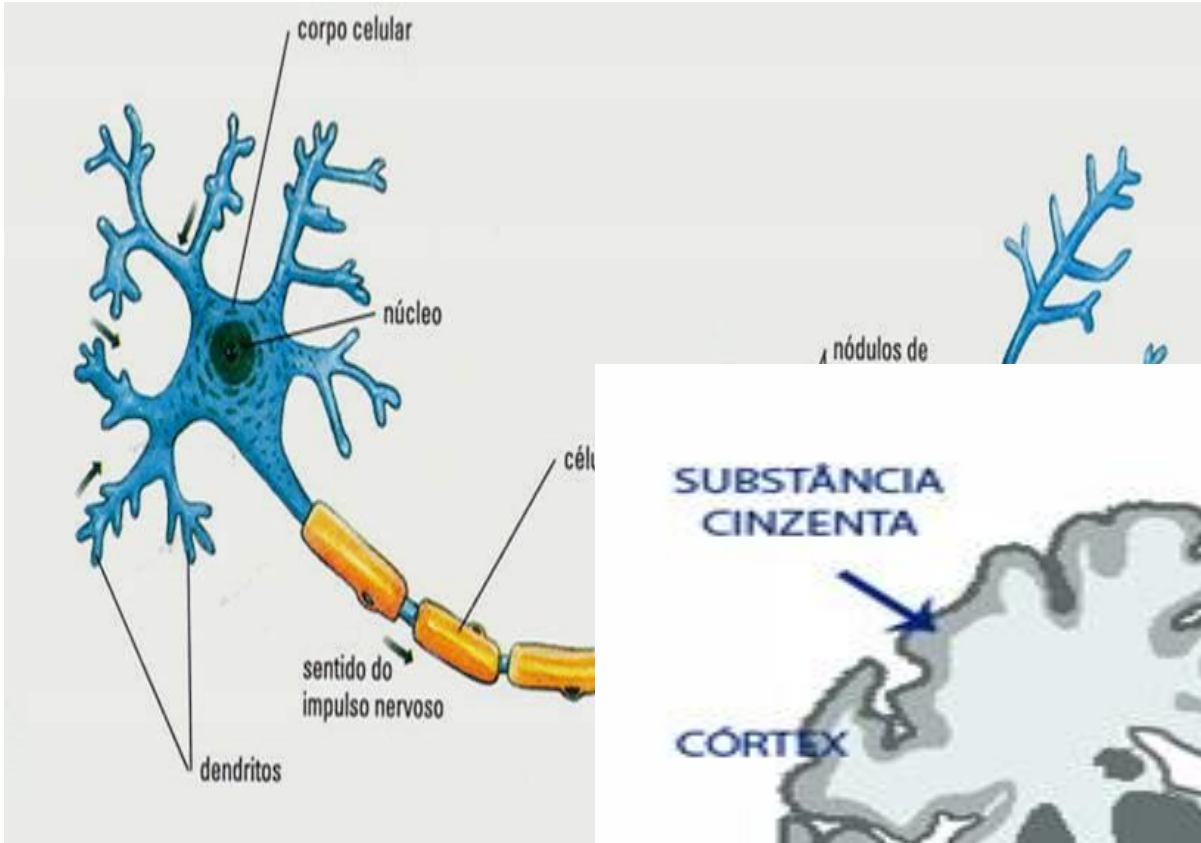
└ GASTROINTESTINAL

MEDULA ESPINHAL:

LIGAR O ENCÉFALO A REGIÃO PERIFÉRICA

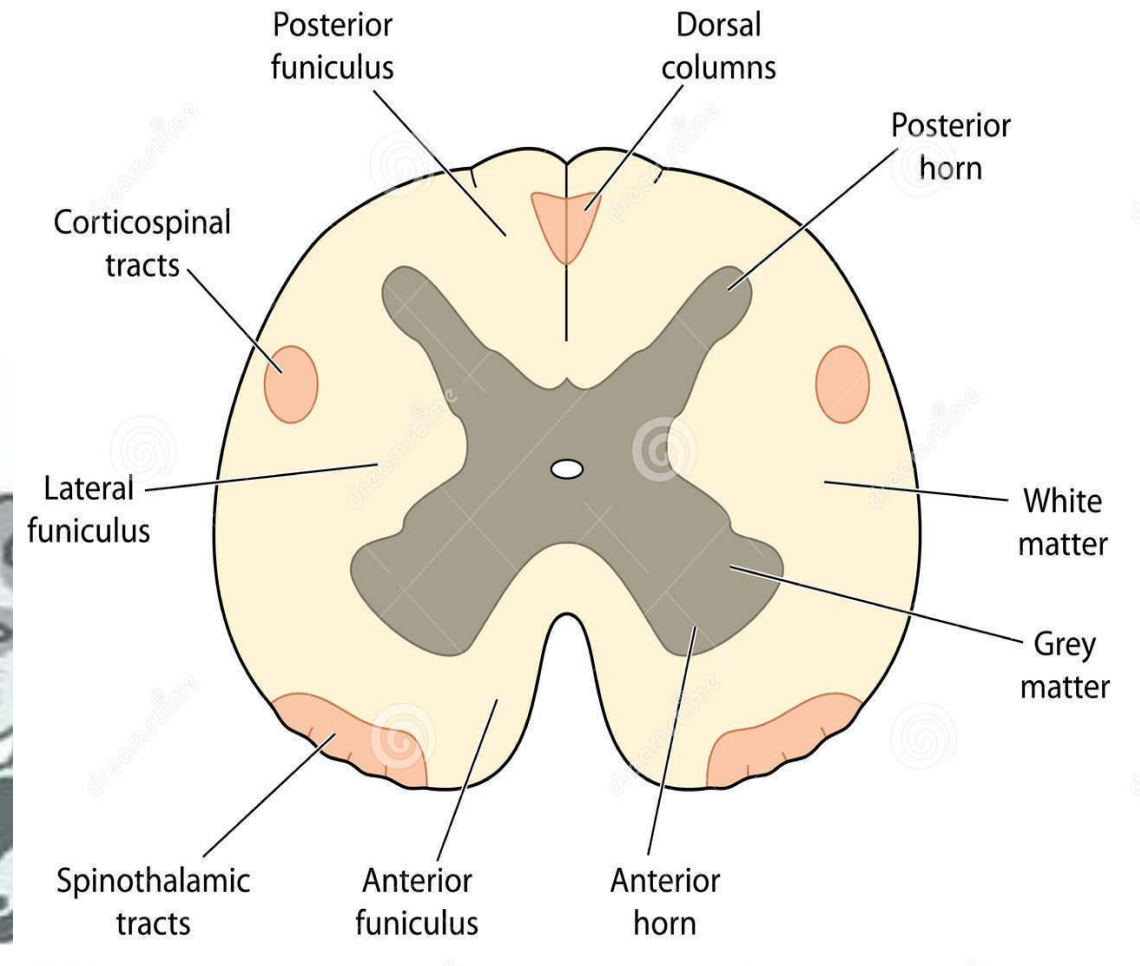


MASSA BRANCA E CINZENTA



MASSA CINZENTA – CORPO CELULAR

MASSA BRANCA - AXÔNIO



ATO REFLEXO

ARCO REFLEXO

