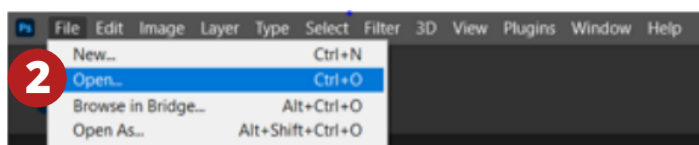


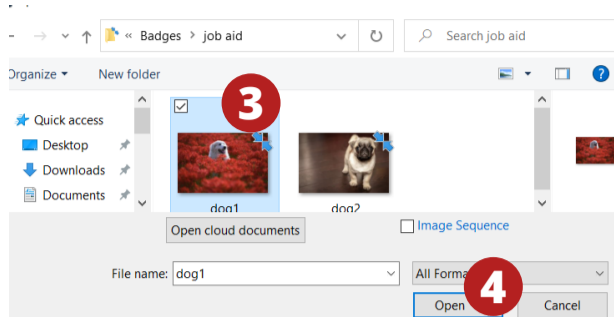
# HOW TO CROP AN IMAGE TO A CIRCLE SHAPE WITH ADOBE PHOTOSHOP

**1** Open Photoshop

**2** Click File → Open

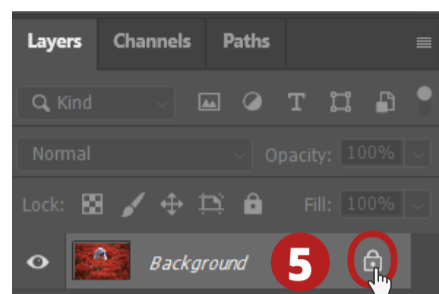


**3** Select an image  
I am using an image from pixabay

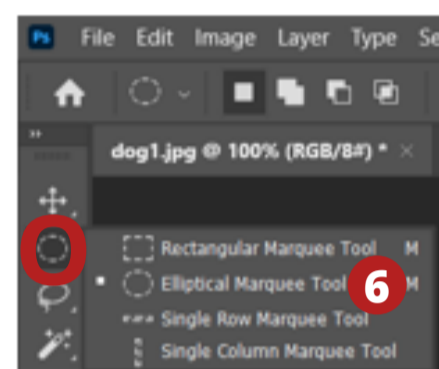


**4** Click Open to open the image

**5** Unlock the background layer  
Click the lock icon to unlock  
The background layer is now editable

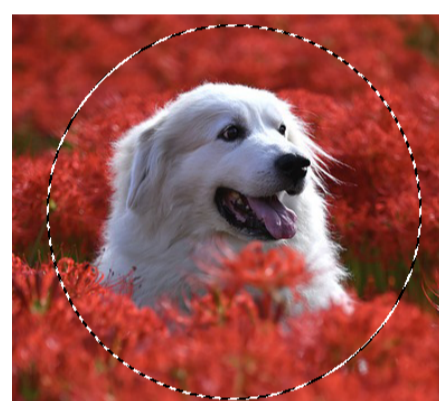


**6** Select the Elliptical Marquee tool from the toolbar  
- If hidden under the Rectangular Marquee, click down on triangle to reveal

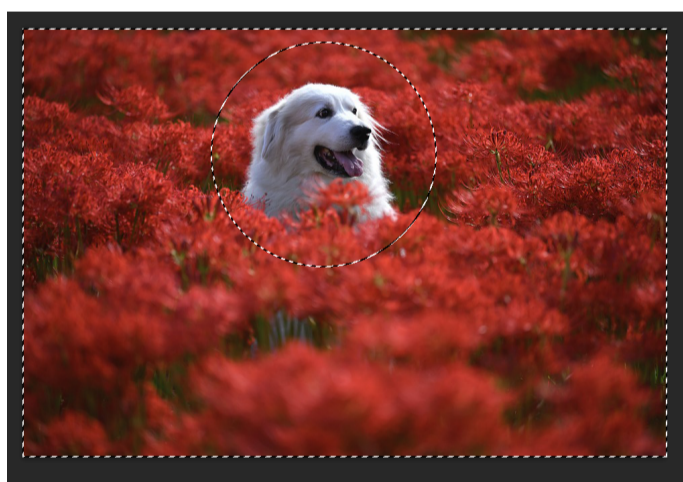
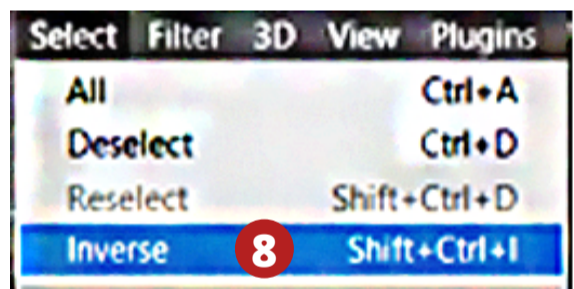


Click on the image and drag out an elliptical outline

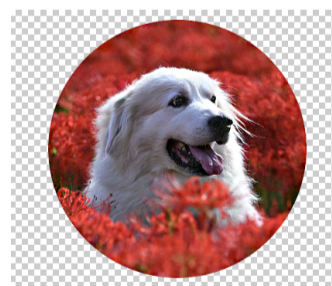
**7** - Hold down the Shift key to change the elliptical into a circle while dragging  
- Move the outlined circle to the desired position with the arrow keys if needed



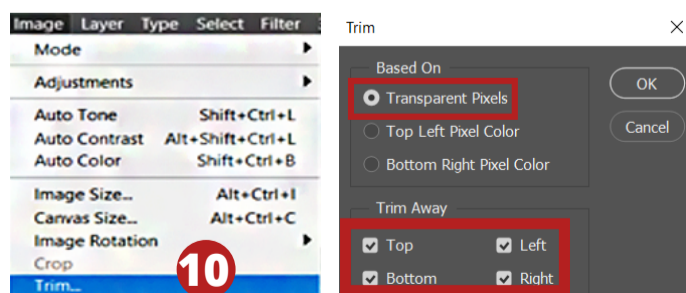
**8** Invert the selection to select everything outside the circle  
- Click Select menu → Inverse



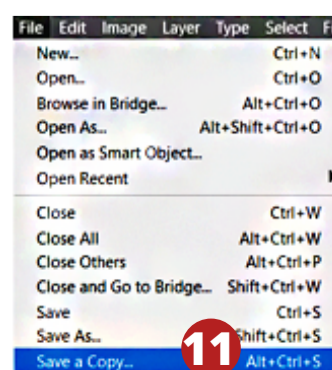
**9** Press Delete or Backspace to delete everything outside the image selection  
- Hold down the ctrl key + D to deselect  
- Or go to Select → Deselect



**10** Remove the transparent exterior  
- Go to image → Trim  
- Select Transparent Pixels  
- Select Top, Left, Bottom, & Right

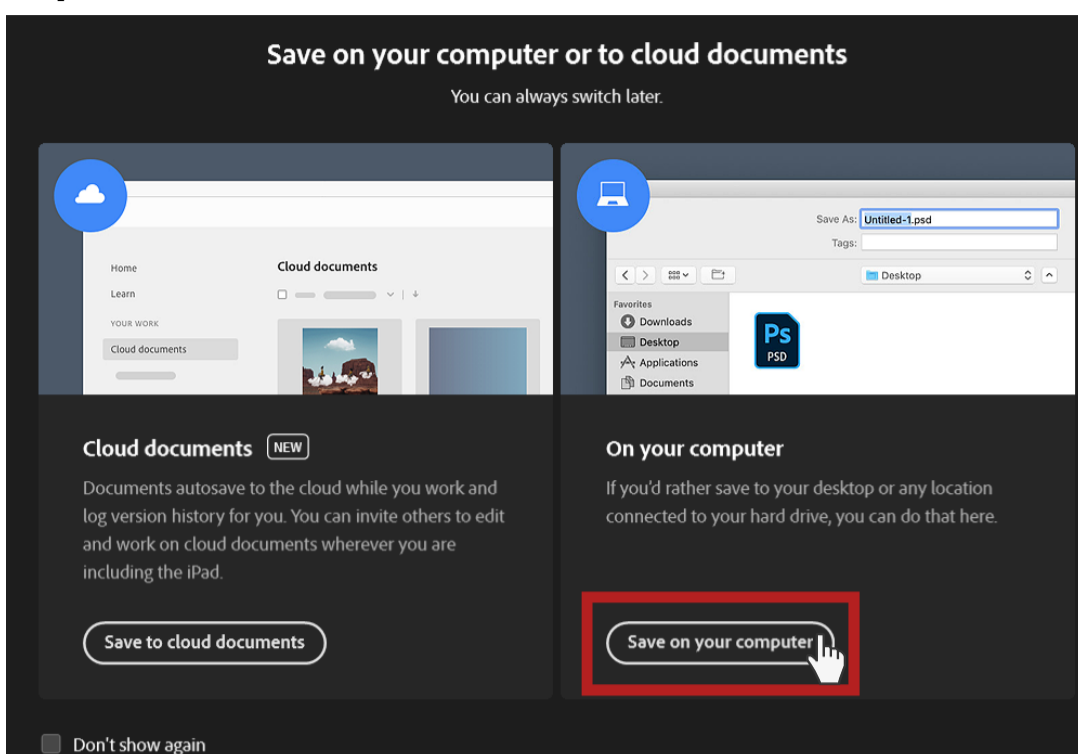


**11** Save the image as a PNG file  
- Click on File → Save a Copy



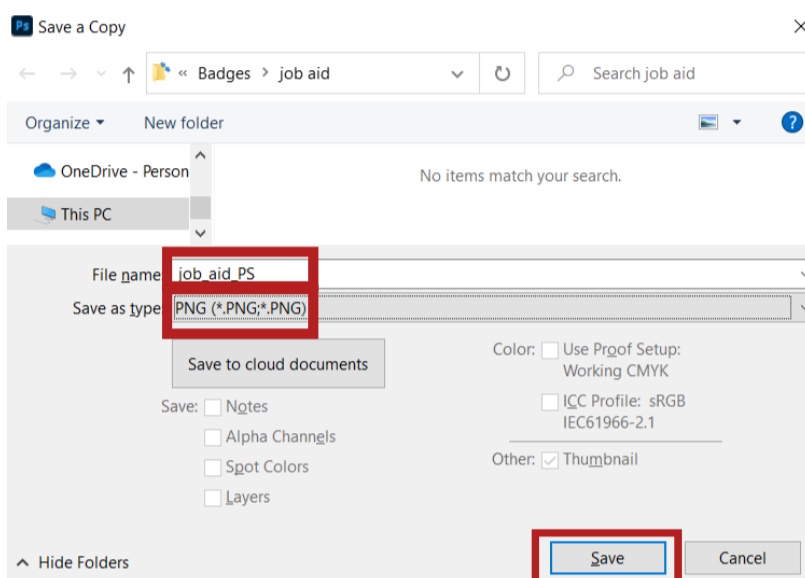
## 11 b

On the "Save on your computer or to the cloud documents" options  
- Click save on your computer



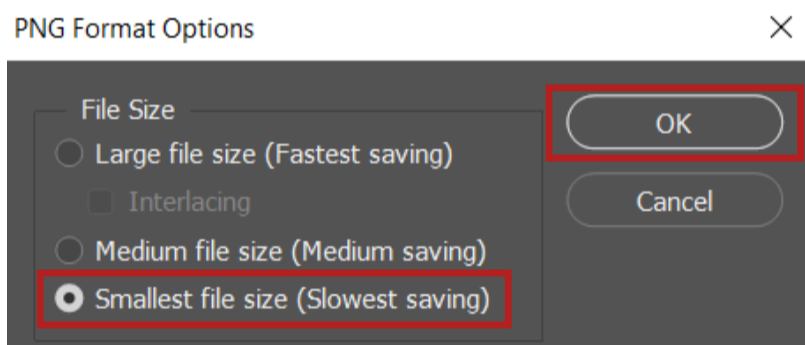
## 11 c

In the "Save a Copy" dialogue box  
- Enter a file name  
- Select PNG as the file type  
- Choose where to save it  
- Click save

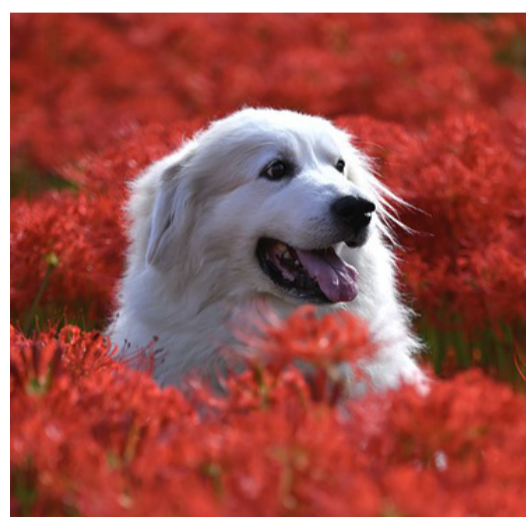


## 11 d

In the "PNG" format options  
- Choose the "Smallest file size"  
- Click OK



Before



After

