

Rating executive summary

Client/Service: ES0030/S002
Reference: ES003000203399396
Valid until: November 27, 2021

Service provider rated

Eulen Seguridad, S.A.

Service rated identification

Consulting and Support Services

Service rated Description

Service that tries to cover all the needs of the clients in the design and implementation of plans, processes and activities that guarantee the physical and logical security of their assets and operations. Services such as definition of security master plans, crisis management plans, business continuity plans, self-protection, emergency and evacuation plans or design and implementation of corporate security management systems.

Scope

Organization staff with their own equipment and who store information in corporate systems.

Rating process

Rating and certification process have four steps:

- Preparation of a memory by the service provider or conducting an audit by an independent third party according to ISAE 3402.
- Documentary pre-assessment based on previous memory (or audit report) and require, if needed, correction or errors and/or clarifications.
- *In situ* assessment based on a sample of controls included in the memory.
- Preparation of final report and issue of the label and certification with the rating level obtained.

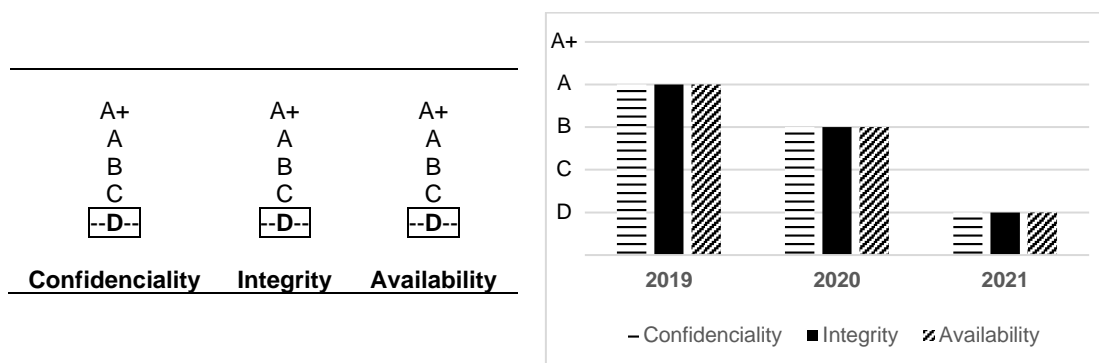
Once the label has been issued, supervision mechanisms come into place:

- Incident channel
- Cybersecurity online monitoring
- Random exhaustive audits

This report corresponds to the third step of the rating process and it shapes the final assessment of service rating, based on the answers that the service provider has included in the memory about applicability and implementation of controls included in rating methodology version 2.3 and evidences provided by the provider or obtained by the agency team during the onsite visit in service provider facilities.

Rating

The rating level obtained by the service and the comparison with previous years according to the qualification level after the aforementioned rating process has been carried out are the following:



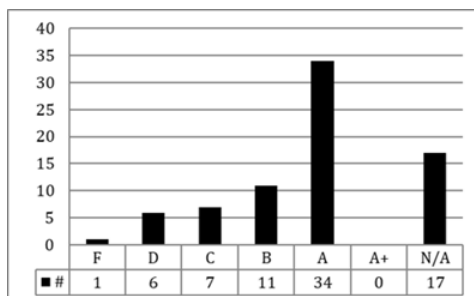
The criteria for assigning the global rating, as established in version 2 of the methodology are:

- 100% of the general measures and for the corresponding dimension of priority '1'.
- At least 85% of the general measures and for the corresponding dimension of priority '2'.
- At least 50% of the general measures and for the corresponding dimension of priority '3'.

Rating executive summary

Client/Service: ES0030/S002
Reference: ES003000203399396
Valid until: November 27, 2021

The evaluation of individual sections considers 100% of the controls (regardless of their priority) and it is showed in the following diagram:



Madrid, April 21, 2021



Patricia López Casado
Rating Evaluation Team – Operations Direction