

Look 



to

Speak

A guide to get set up

g.co/looktospeak

Google

Tip 1/6

Positioning the device with the Setup Helper

The app only works if the front-facing camera can see the user's eyes. There are a few things to consider:

- Place the device in front of the user's face, slightly below eye level, to give the camera a better chance of seeing their eyes clearly. Positioning the device to the user's side could mean that their eye movements are not interpreted correctly.
- Mounting the device securely (rather than holding it in your hand) assures that it stays in the correct position and minimises any accidental movement.

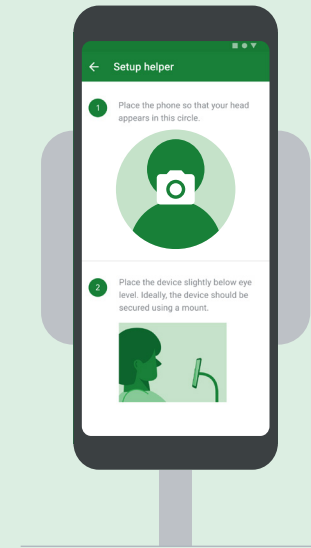


In the menu, you can find the Setup Helper which can help to position the device properly.



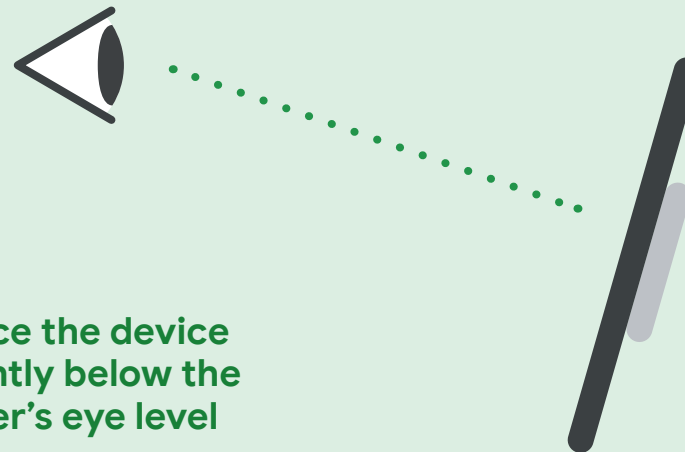
In the menu, you can find the Practice Screen where the user can look in the three directions — up, left, right — to get comfortable with the interaction.

Front view



Mount the device securely

Side view



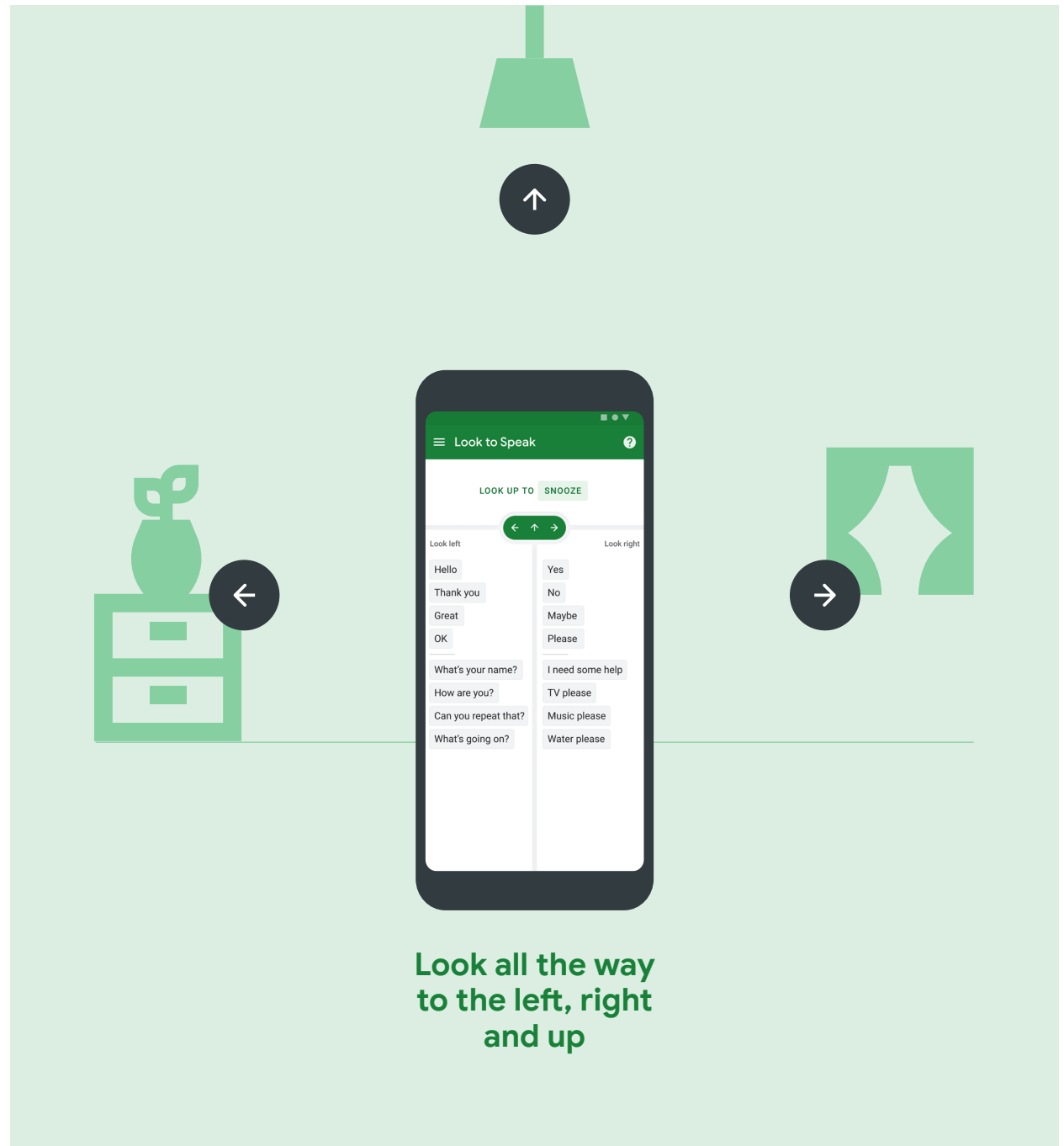
Place the device slightly below the user's eye level

Tip 2/6

Exaggerate eye gestures

Users need to look away from the device to trigger actions. It's not enough to just look at the edges of the screen. Looking off screen will take some practice, especially if they are familiar with other eye gaze systems where actions are performed by looking on screen.

- It's essential to look all the way to the left, right, and up so that the app can register a gaze as deliberate.
- Try picking objects in the room to use as landmarks: 'look to the plant', 'look to the window', 'look to the light'.



Tip 3/6

Holding a gaze

It's important to hold each gaze — left, right, or up — long enough for the app to register it.

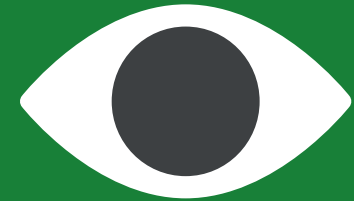
- When 'sound feedback' is enabled, a 'ping' will sound to register the gaze.
- Once users are familiar with this new interaction they can choose to speed it up.
- It may help to demonstrate the interaction to less familiar users.



In the menu, you can find Settings, where you can adjust how long each gesture should be held to trigger an action.

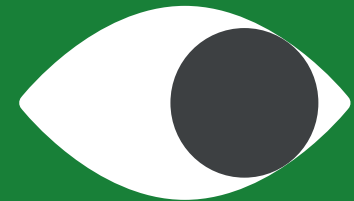
Step 1

Look straight



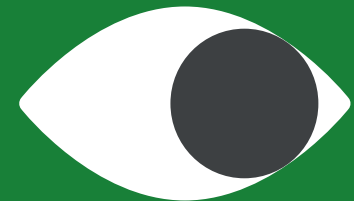
Step 2

Look in desired direction



Step 3

Hold until you hear a 'ping'



Tip 4/6

Customize the gaze settings

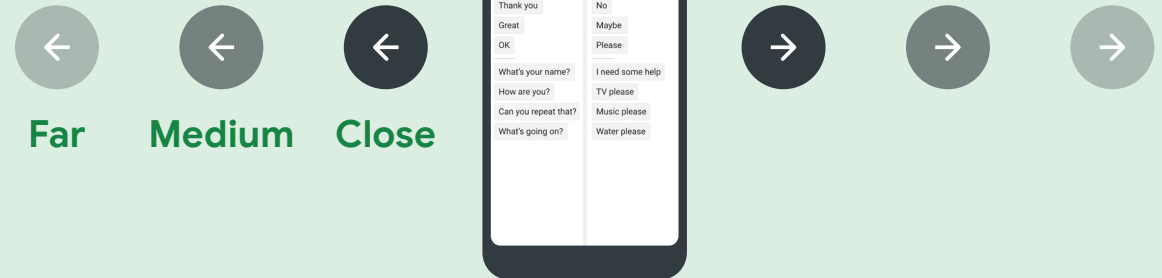
In the settings menu, you can customise each gaze direction to suit the user's preferences.

- **Gaze off-screen distance:** controls how far off screen users need to look to trigger an action.
- **Gaze duration:** controls how long users need to hold a look to trigger an action.
- If a smaller gesture distance and a faster gaze duration are set, there is a higher risk of accidentally triggering unintended actions.

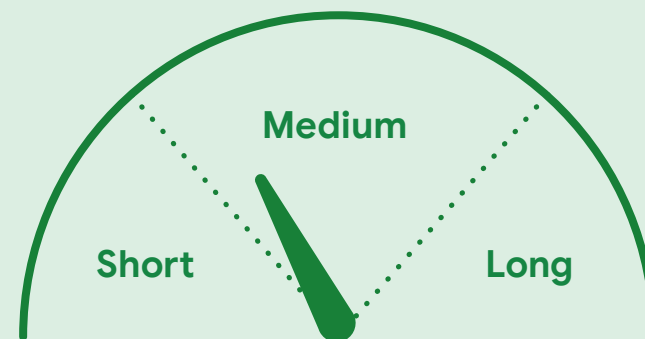


In the menu, you can find Settings, where you can adjust how long each gesture should be held and how far off-screen you have to look to trigger an action.

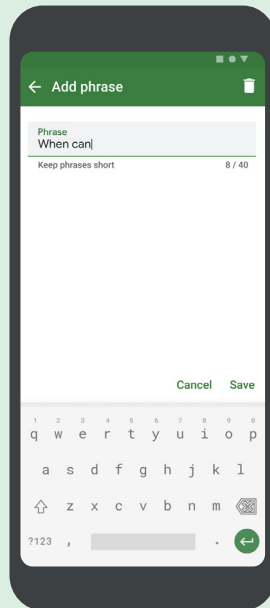
Gaze off-screen distance



Gaze duration



Tip 5/6

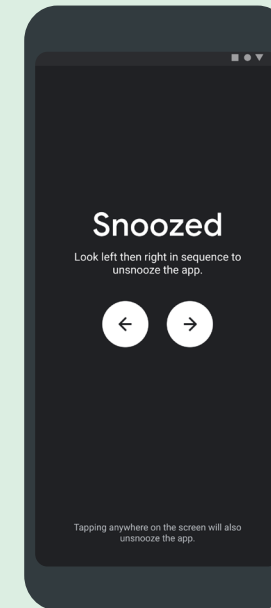


Set a familiar phrase

The app comes preloaded with a selection of generic phrases which can be edited in the phrasebook. When learning how to use the app or introducing it to someone else, it can be helpful to personalise it.

- Customise the phrases to be more relevant to the user.
- Choose a phrase to practice with e.g. 'Hello, my name is _____', so that it's easier to notice when something goes wrong.

Tip 6/6



Snooze & Unsnooze

The user can snooze the app by looking up; a sequence of gazes is required to activate it again (this stops it getting unsnoozed by accident).

- In the settings, customise the number of steps required to unsnooze.
- If the unsnooze sequence is not completed, eventually it will 'time-out'.
- Unsnooze the app for a user by tapping the screen.