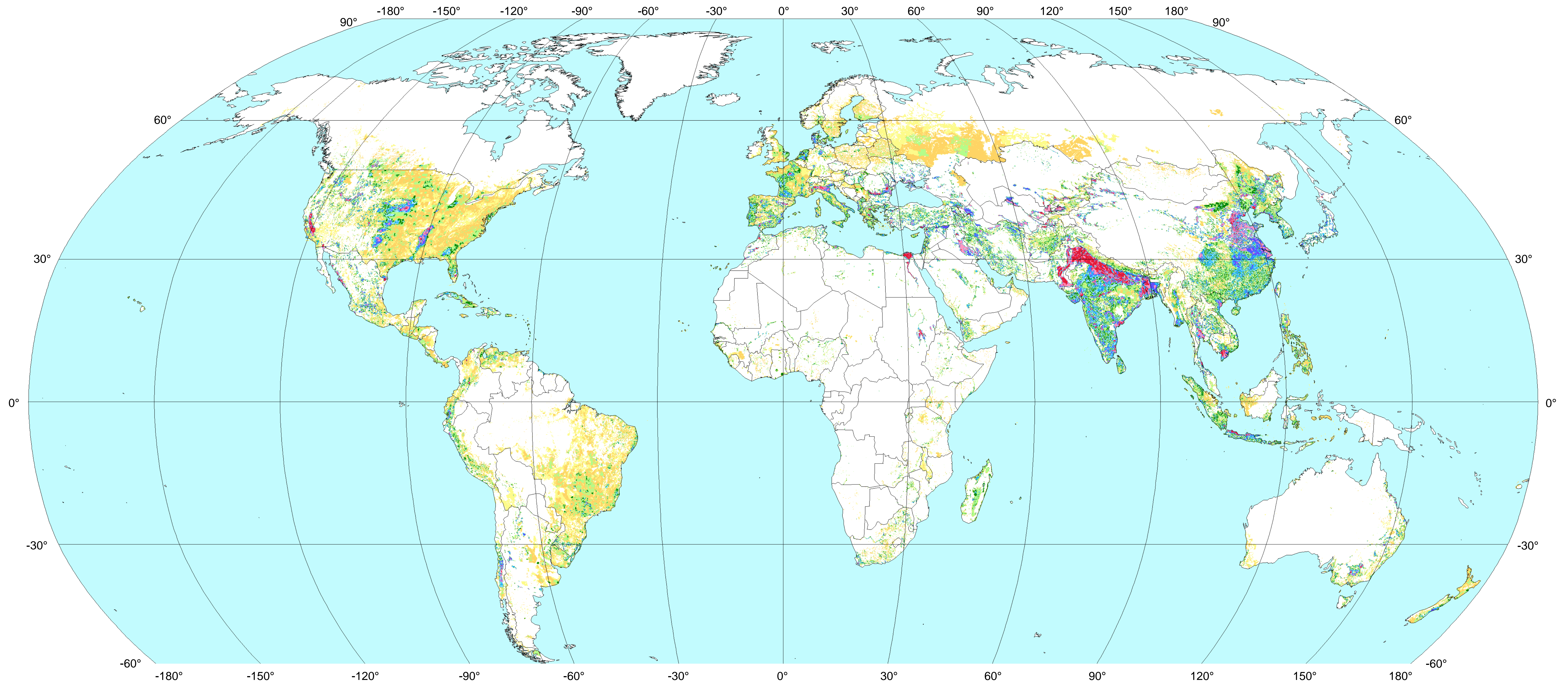
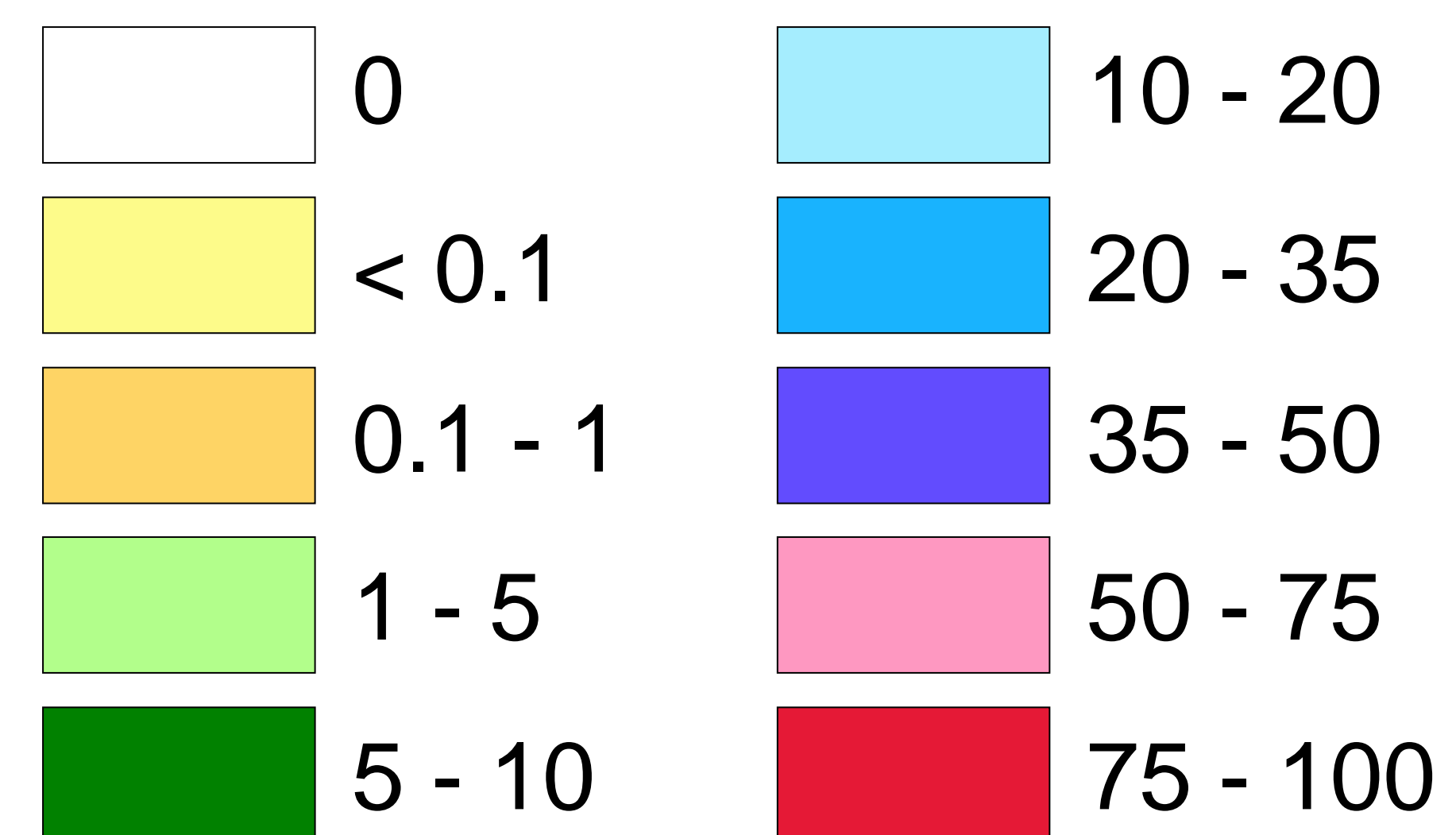


The digital global map of irrigation areas

October 2013



Area equipped for irrigation in percentage of land area



The map shows area equipped for irrigation in percentage of cell area.
For the majority of countries the base year of statistics is in the period
2000 - 2008.

Projection: Robinson
Resolution: 5 arc-minutes

<http://www.fao.org/nr/water/aquastat/irrigationmap/index.stm>

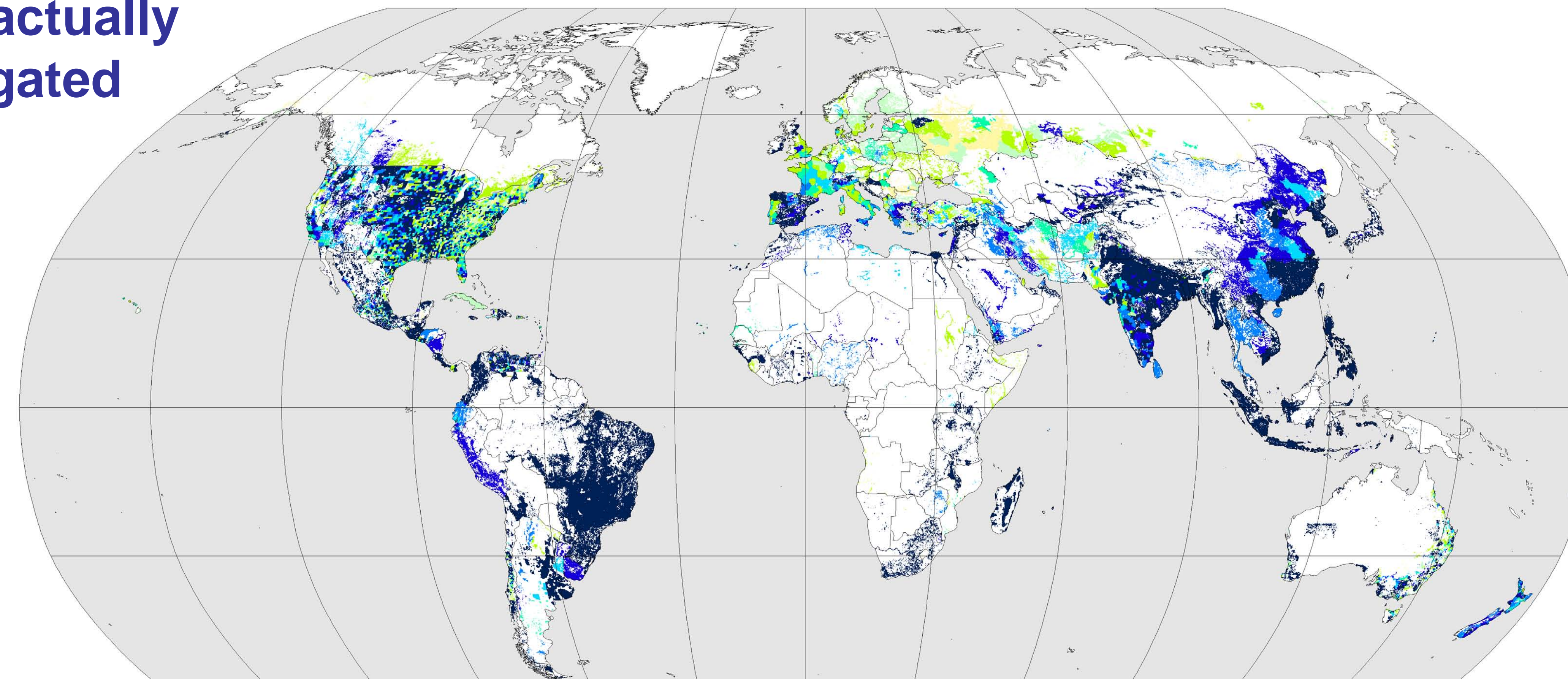
Stefan Siebert, Verena Henrich (Institute of Crop Science and Resource Conservation, University of Bonn, Germany) and
Karen Frenken, Jacob Burke (Land and Water Division, Food and Agriculture Organization of the United Nations, Rome, Italy)



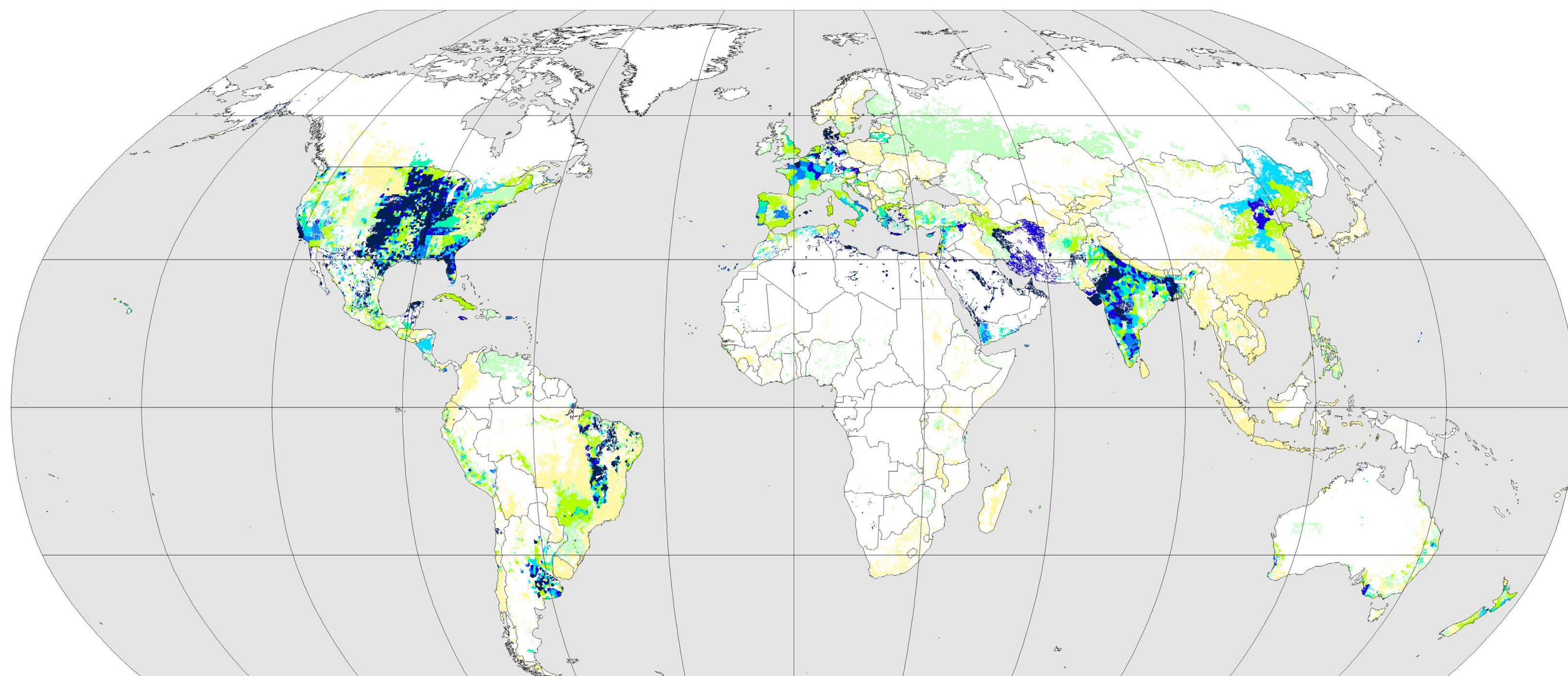
The digital global map of irrigation areas

October 2013

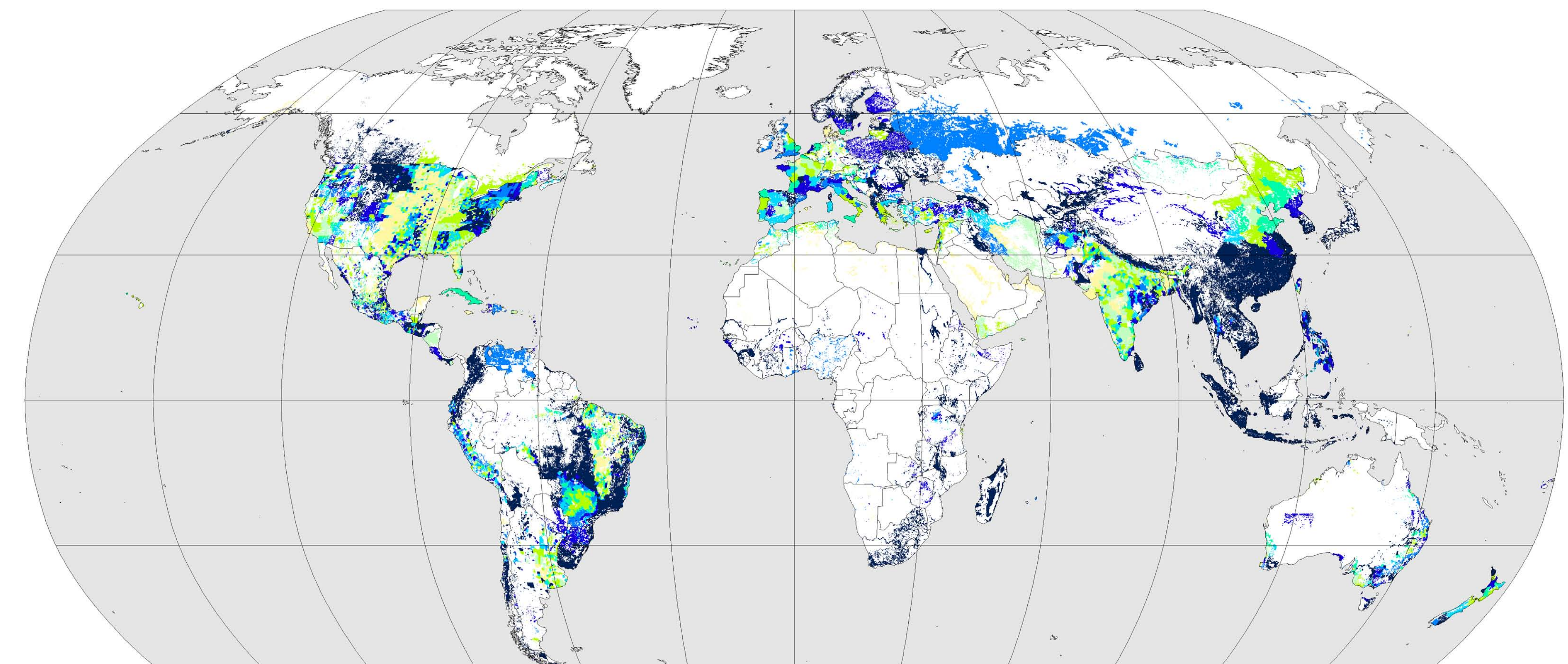
Area actually irrigated



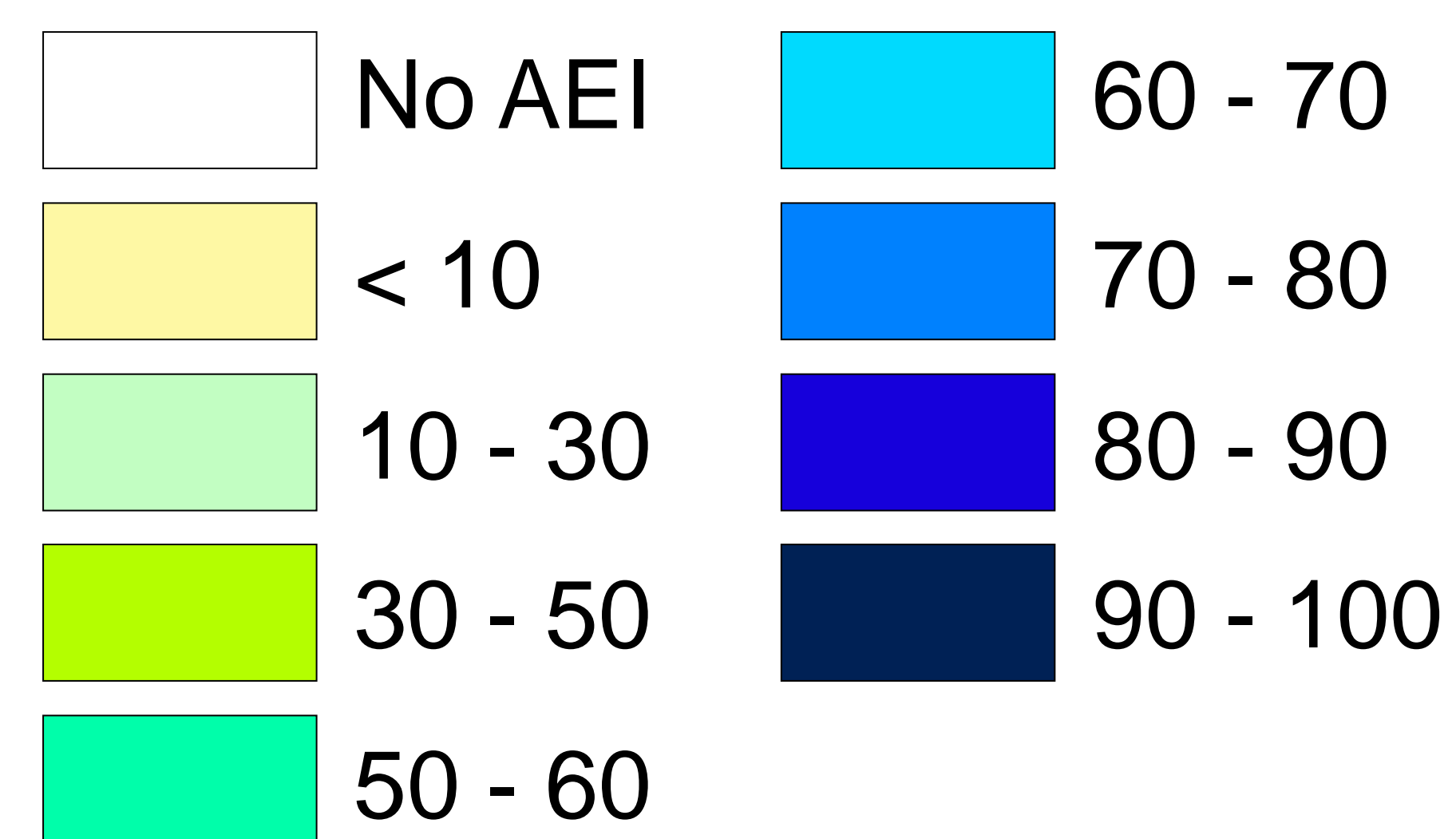
Area irrigated with groundwater



Area irrigated with surface water



Percentage of area equipped for irrigation (AEI)



The maps show the percentage of area equipped for irrigation that is actually irrigated, irrigated with groundwater or irrigated with surface water. For the majority of countries the base year of statistics is in the period 2000 - 2008.

<http://www.fao.org/nr/water/aquastat/irrigationmap/index.stm>

Projection: Robinson
Resolution: 5 arc-minutes

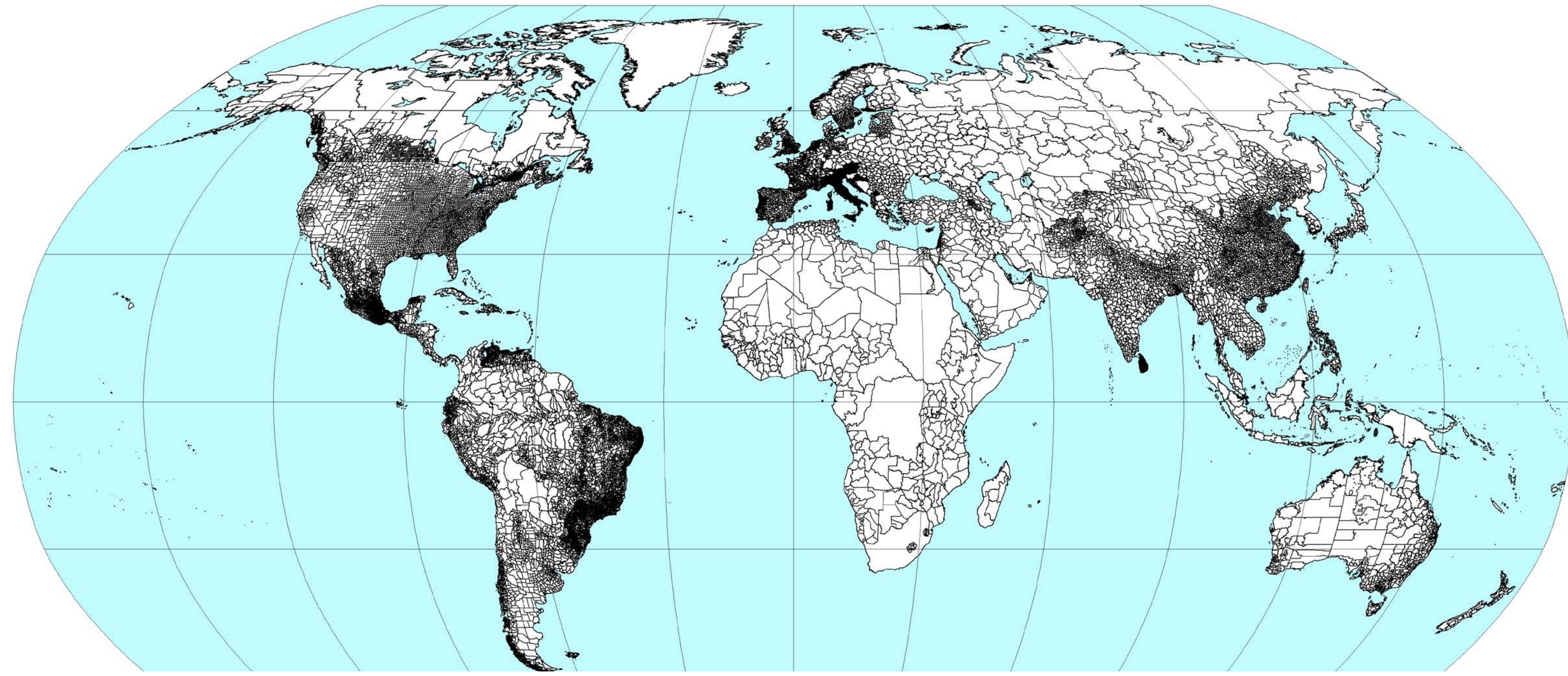
Stefan Siebert, Verena Henrich (Institute of Crop Science and Resource Conservation, University of Bonn, Germany) and Karen Frenken, Jacob Burke (Land and Water Division, Food and Agriculture Organization of the United Nations, Rome, Italy)



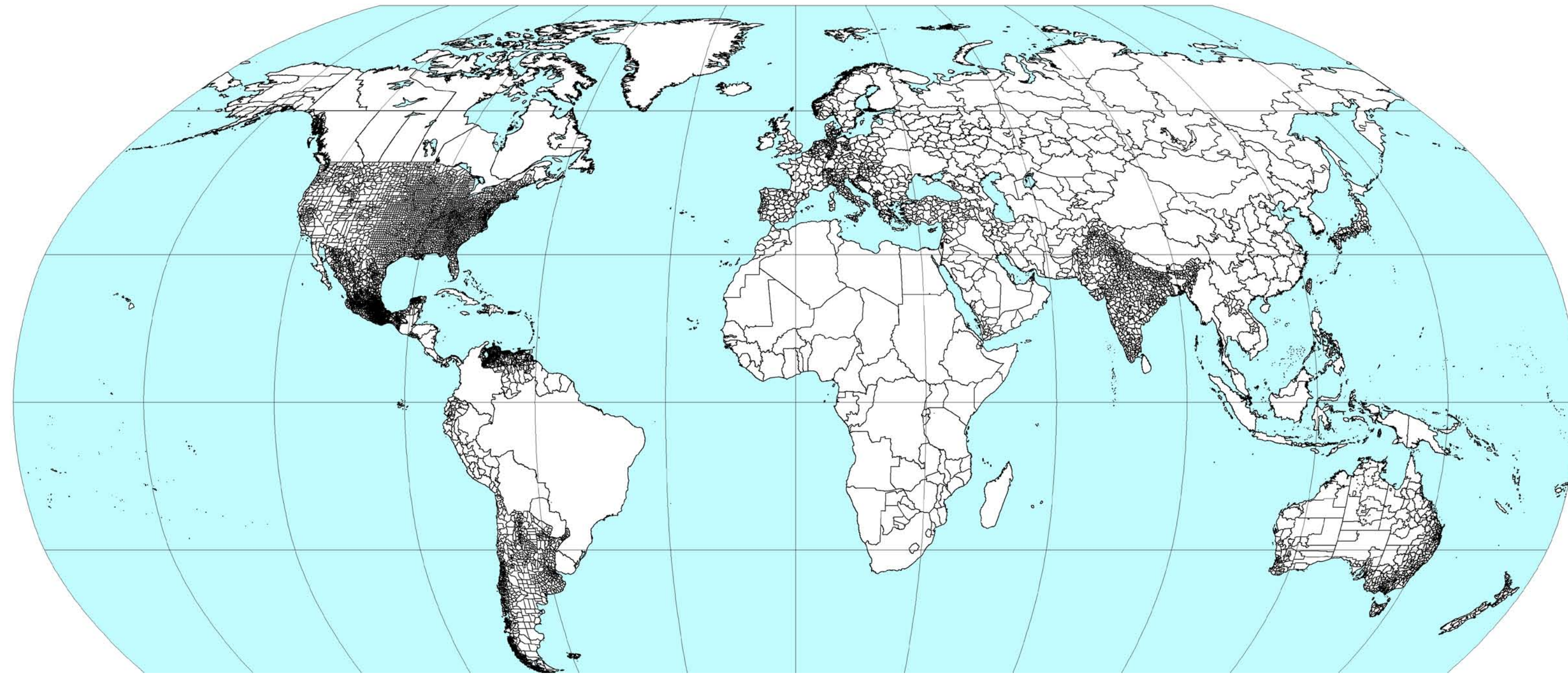
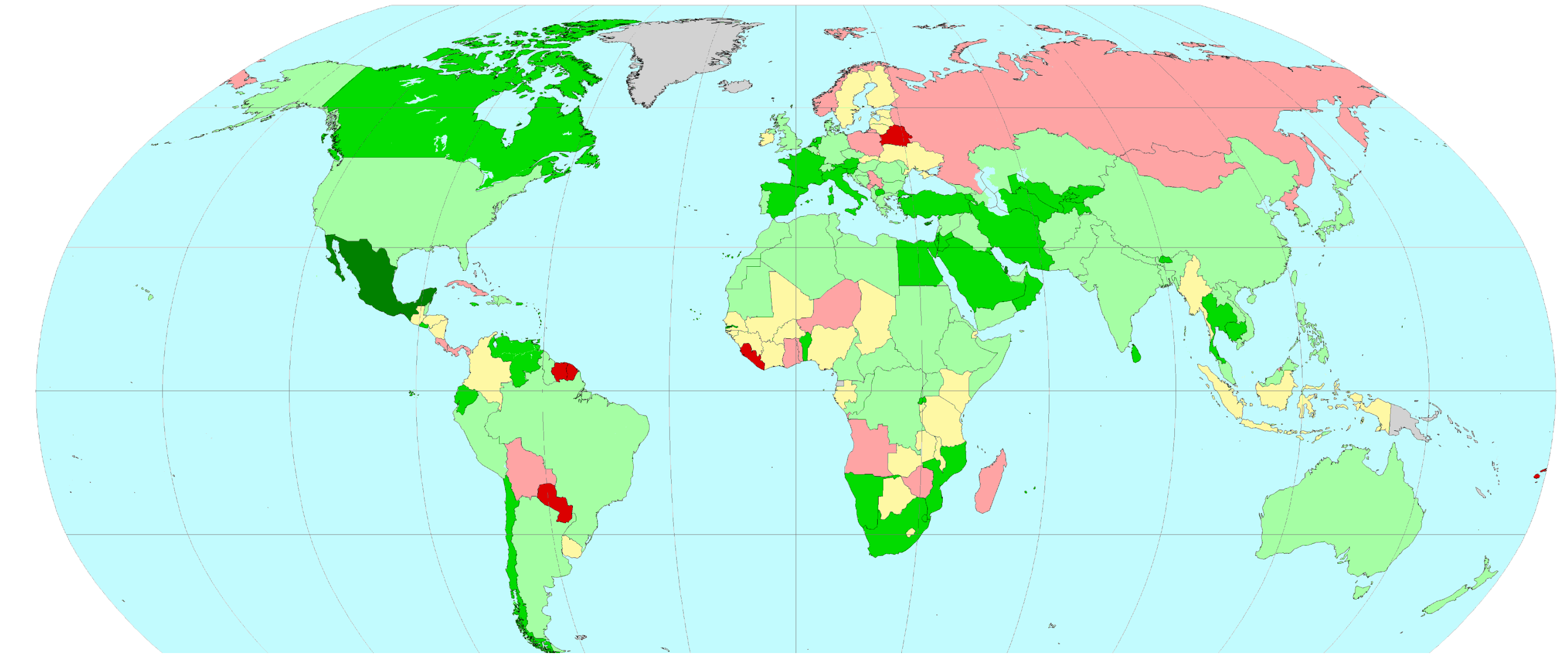
universität **bonn**

The digital global map of irrigation areas

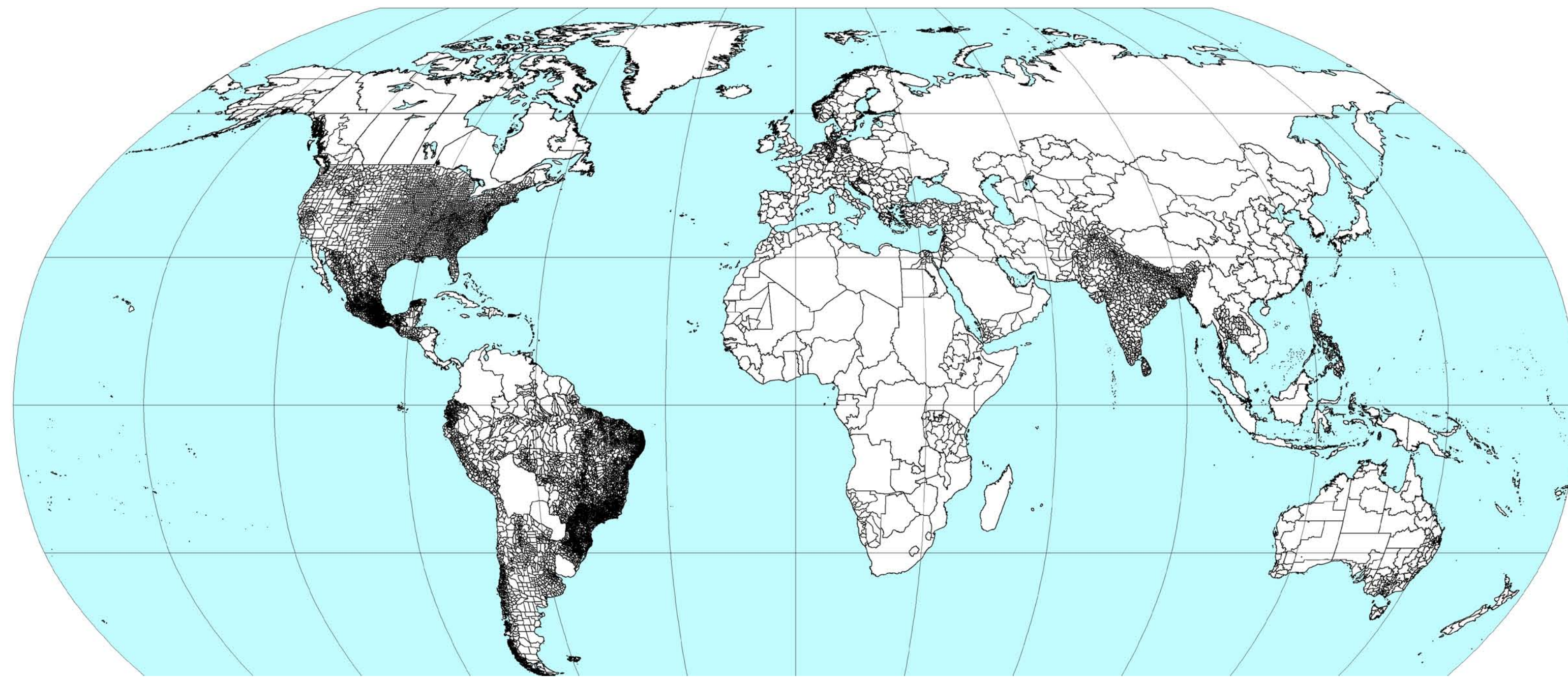
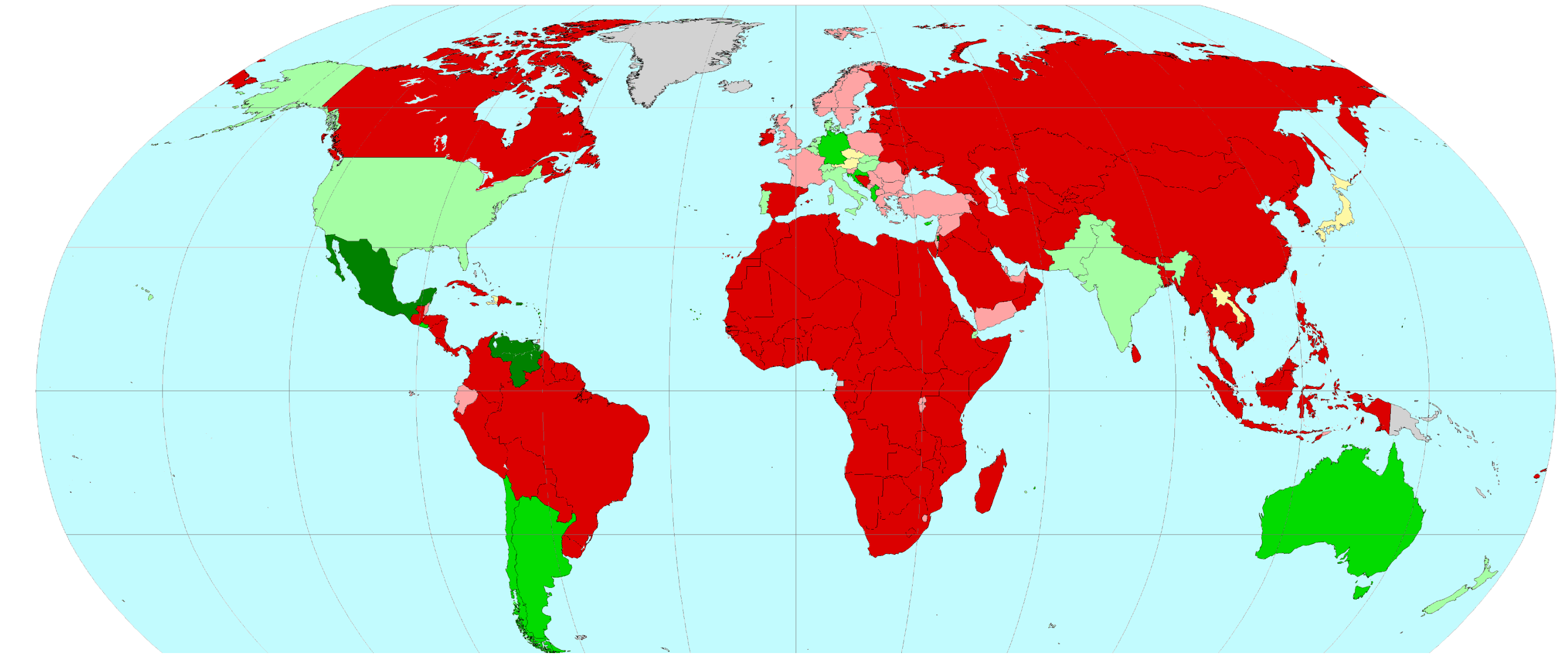
October 2013



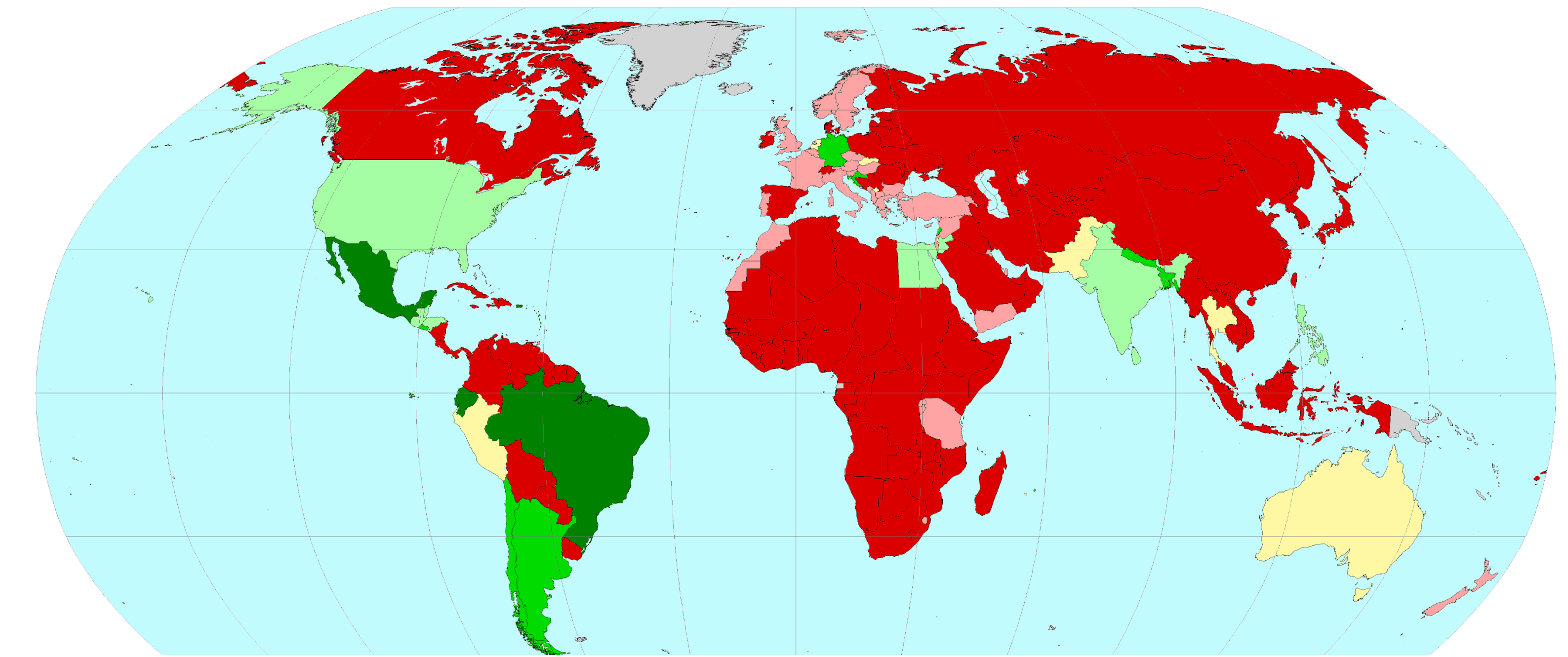
Area equipped for irrigation



Area actually irrigated



Source of irrigation water



Map quality

Grey	No AEI	Yellow	Fair
Dark green	Excellent	Pink	Poor
Bright green	Very good	Red	Very poor
Light green	Good		

The maps show the subnational units for which irrigation statistics have been available (left) and the map quality marks assigned to each country (right) for area equipped for irrigation, area actually irrigated and the water source of irrigation. For the majority of countries the base year of statistics is in the period 2000 - 2008.

Projection: Robinson
Resolution: 5 arc-minutes

<http://www.fao.org/nr/water/aquastat/irrigationmap/index.stm>

Stefan Siebert, Verena Henrich (Institute of Crop Science and Resource Conservation, University of Bonn, Germany) and Karen Frenken, Jacob Burke (Land and Water Division, Food and Agriculture Organization of the United Nations, Rome, Italy)



universität**bonn**