

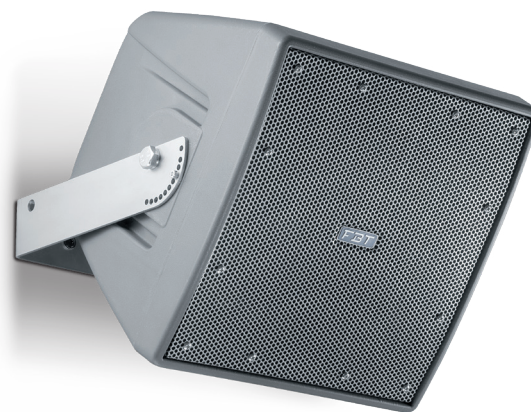
## All Weather Speaker

### MAIN APPLICATIONS

- Theme and Amusement parks
- Outdoor Entertainment centers
- Multipurpose indoor / outdoor venues
- Background music
- Athletic fields
- Swimming pools
- Convention centers
- Cruise ship
- Stadiums / Arenas

### MAIN FEATURES

- Multipurpose 8" coaxial, 450W-8Ohm / 124dB SPL
- 8" coaxial woofer with 2" coil and 1" HF driver with 1.4" coil on conical 90° horn
- 100V line transformer with selectable 100W-50W power tapping
- Sturdy molded polyethylene curved enclosure
- Steel U bracket and other included hardware accessories
- 4 wires cable to select the desired power tapping
- Water-stop grille with 3 layers of protection
- IP55 weather resistant
- Standard grey finish RAL 7011



Weather resistant

### DESCRIPTION

The FBT SHADOW 108CT is a weatherproof two way loudspeaker system designed to provide high quality voice and music reproduction in applications requiring extreme weather resistance. It is designed to withstand long-term exposure to tough, environmental conditions. The low frequency transducer is a 8" woofer with a 2" voice coil. The FBT SHADOW 108CT features a line transformer for 100V applications with selectable 100W-50W power tapping. The cabinet is a single piece rotational moulded in polyethylene, fully UV protected. The cabinet is equipped with a die cast aluminium wall bracket with ball-socket for multi angle adjustment capability. The FBT SHADOW 108CT meets the requirements of IP55 code (International Protection Rating).

### TECHNICAL SPECIFICATIONS

#### GENERAL

Configuration	way	2
Low frequency woofer	inch	8 - 2 coil
High frequency driver	inch	1 - 1.4 coil

#### ACOUSTIC SPEC.

Frequency response	(@-6dB)	80Hz - 20kHz
Crossover frequency	kHz	1.8
Sensitivity (@1W,1m)	dB	95
MAX SPL (cont/peak)	dB	120 / 124
Dispersion	H x V	90° conical
Recommended HP filter	Hz - dB oct.	60 - 24

#### INPUTS & OUTPUTS

Connectors		4 wire cable
------------	--	--------------

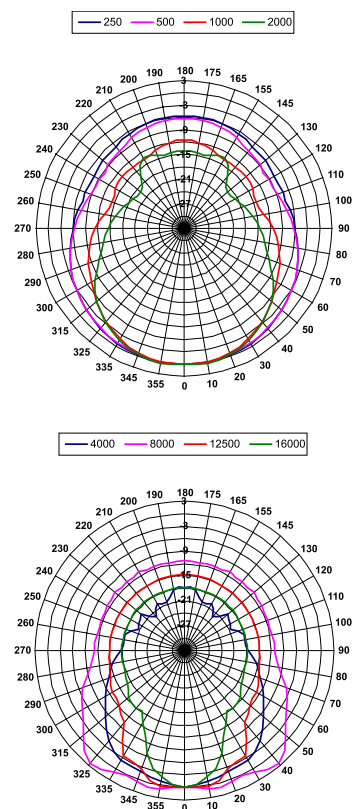
#### AMPLIFIER

Transformer	V / W	100 / 100 - 50
Recommended amplifier	W RMS	450
Long term power	W	225
Short term power (IEC 268-5)	W	900
Nominal impedance	Ohm	8

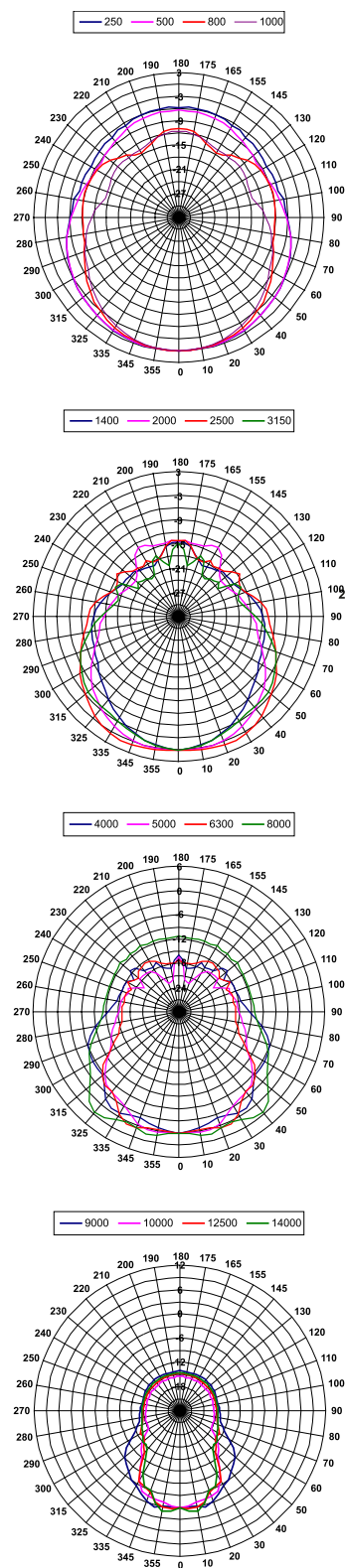
#### MECHANICAL SPEC.

Material		Polyethylene rotomolded
Net dimensions (WxHxD)	mm inch	285 x 285 x 250 11.22 x 11.22 x 9.84
Transport dimensions (WxHxD)	mm inch	392 x 392 x 347 15.43 x 15.43 x 13.66
Net weight	kg lb	10 22.04
Transport weight	kg lb	12.1 26.67

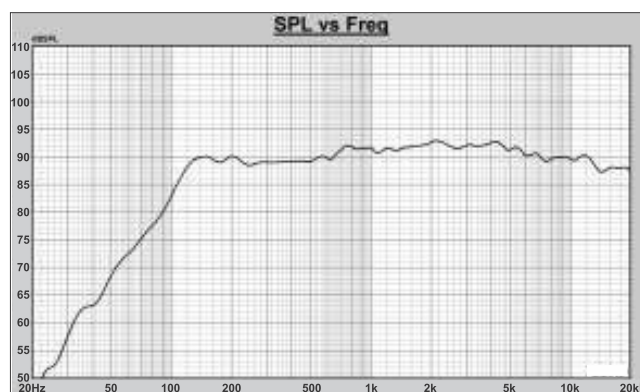
## HORIZONTAL POLAR DIAGRAM



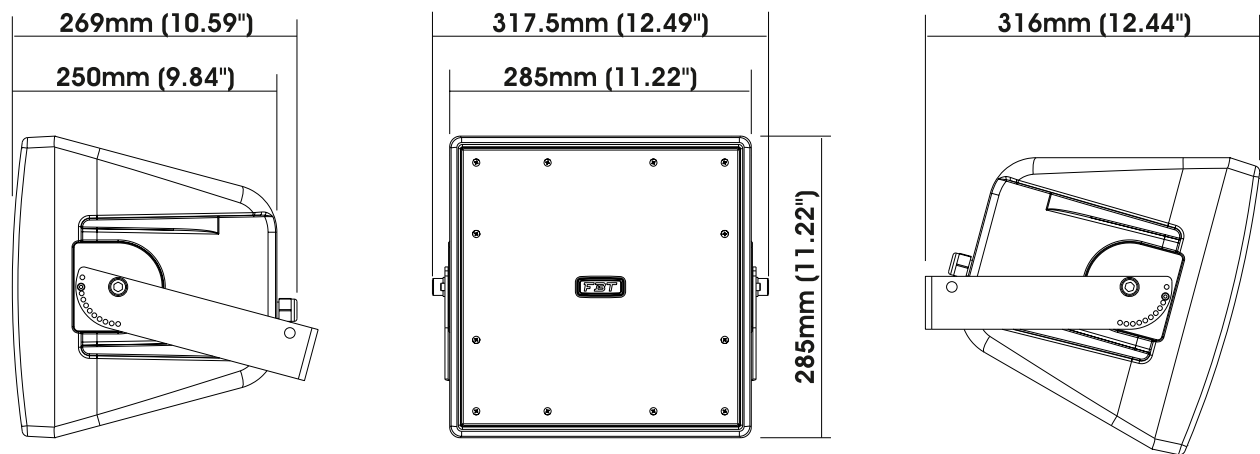
## VERTICAL POLAR DIAGRAM



## FREQUENCY RESPONSE DIAGRAM



**DIMENSIONAL DRAWING**



**INCLUDED ACCESSORY**

